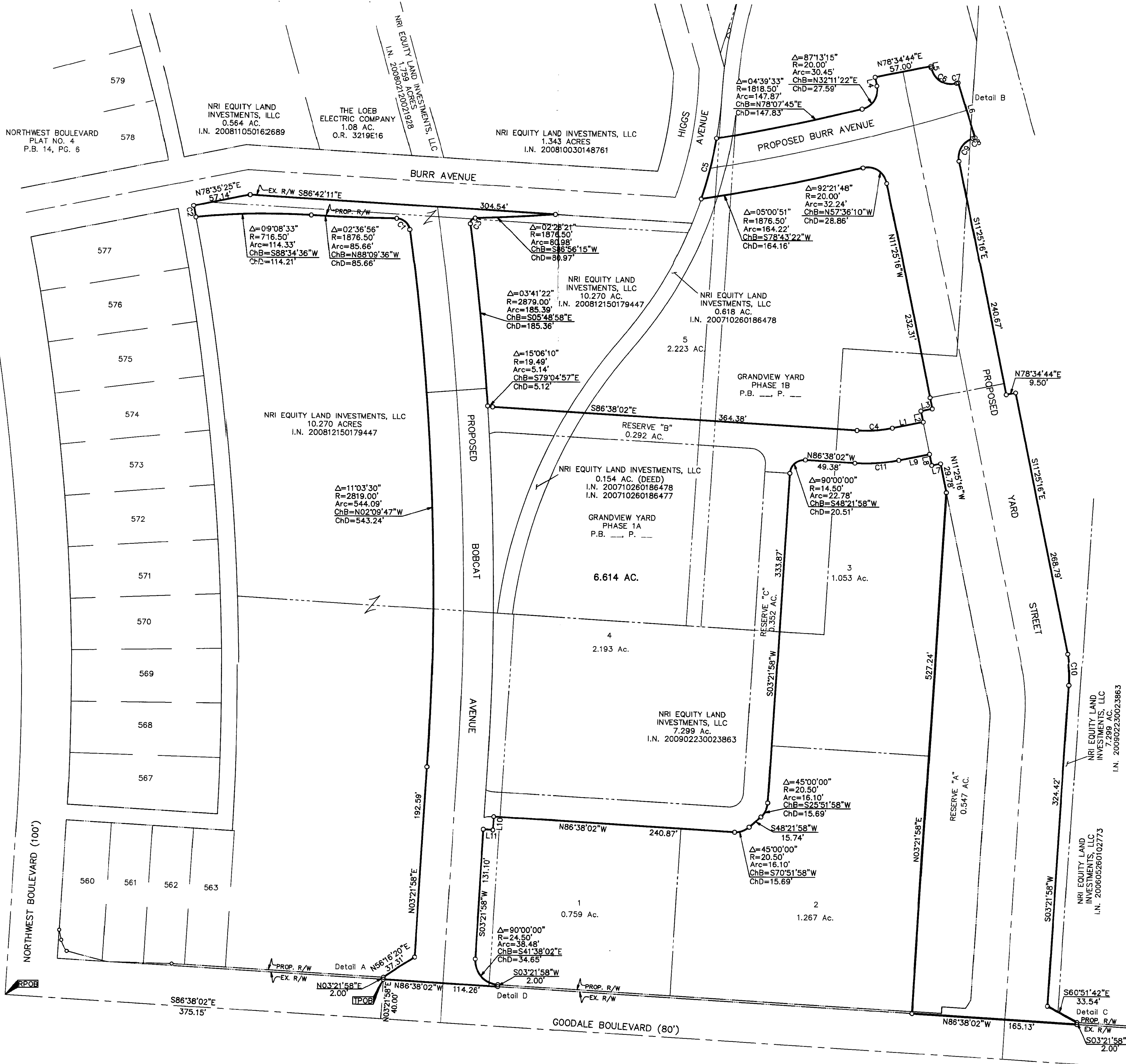
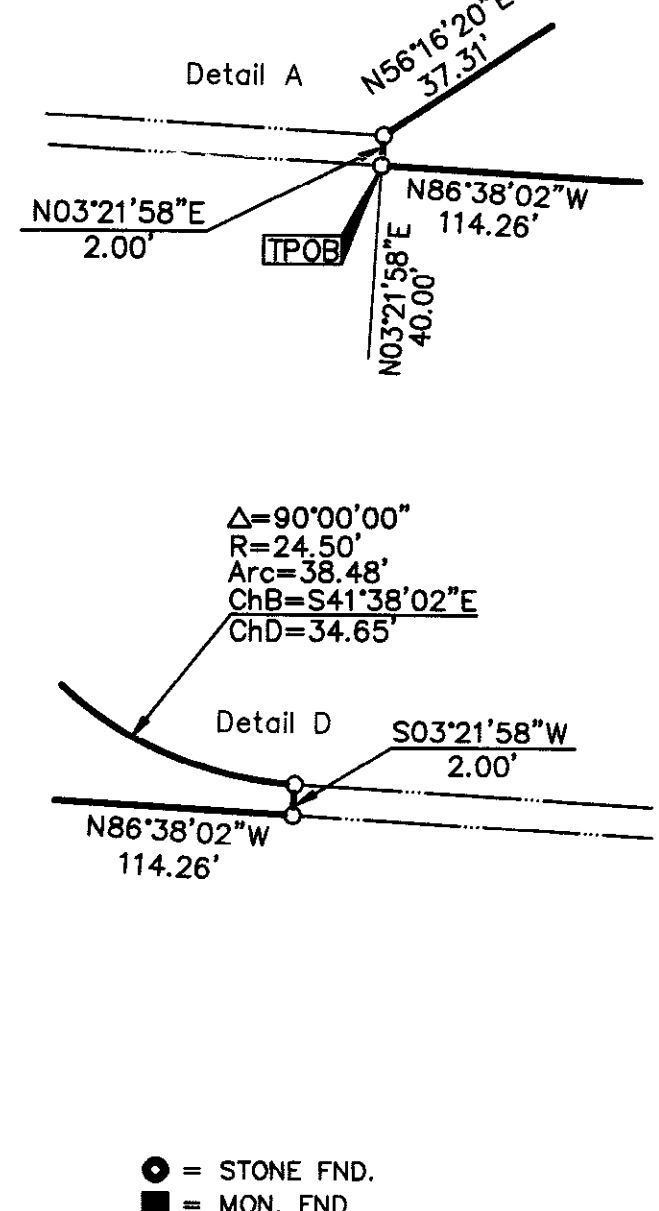


SURVEY OF ACREAGE PARCELS
SECTION 7, TOWNSHIP 5, RANGE 22
REFUGEE LANDS
CITY OF GRANDVIEW HEIGHTS, COUNTY OF FRANKLIN, STATE OF OHIO

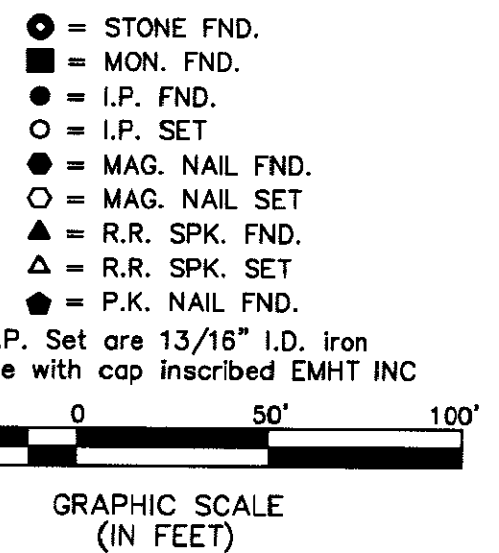


LINE	BEARING	DISTANCE
L1	N78°26'38"E	31.20'
L2	N11°25'16"W	11.50'
L3	N78°26'38"E	11.50'
L4	N11°25'16"W	9.05'
L5	S11°25'16"E	1.71'
L6	S17°02'10"E	58.00'
L7	S78°26'38"W	9.00'
L8	N11°25'16"W	11.50'
L9	S78°26'38"W	31.13'
L10	S03°21'58"W	13.50'
L11	N86°38'02"W	9.50'

CURVE	DELTA	RADIUS	ARC	CH BRG	CH
C1	81°46'31"	13.00'	18.55'	N48°34'48"W	17.02'
C2	00°15'31"	2590.71'	11.70'	N10°43'39"W	11.70'
C3	95°50'05"	5.00'	8.36'	S40°15'23"W	7.42'
C4	14°55'19"	136.50'	35.55'	N85°54'18"E	35.45'
C5	08°20'54"	433.47'	63.16'	N14°02'48"E	63.10'
C6	95°52'43"	20.00'	33.47'	S59°21'37"E	29.70'
C7	00°03'05"	1818.50'	1.63'	N72°40'28"E	1.63'
C8	00°04'24"	1876.50'	2.40'	S72°41'43"W	2.40'
C9	84°09'10"	20.00'	29.37'	S30°39'19"W	26.80'
C10	14°47'14"	123.00'	31.74'	S04°01'39"E	31.66'
C11	14°55'19"	169.50'	44.14'	S85°54'18"W	44.02'



By: [Signature] Professional Surveyor No. 8250



BASIS OF BEARINGS:
The Bearings shown hereon are based on the Ohio State Plane Coordinate System as per NAD83 (1986 Adjustment). Control for bearings was from coordinates of monuments 5-83 and 4-83, having a bearing of North 00° 22' 10" West, for the west limited access right-of-way of Olentangy River Road, established by the Franklin County Engineering Department, using Global Positioning System procedures and equipment.

	Date: October 30, 2009
	Scale: 1" = 50'
	Job No: 2009-1438
	Sheet: 1 of 1
REVISIONS MARK DATE DESCRIPTION	