

SURVEY OF ACREAGE PARCEL

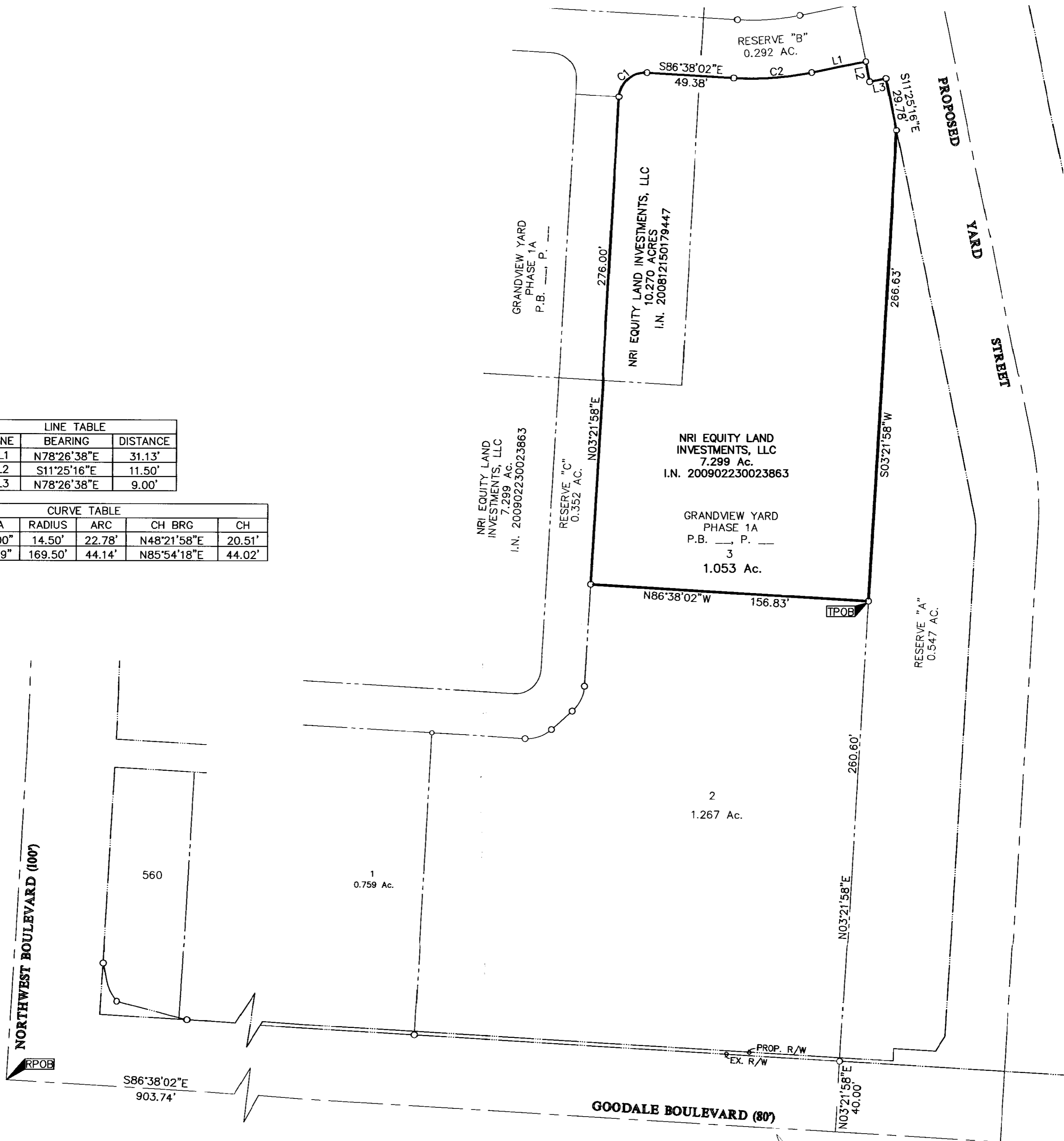
SECTION 7, TOWNSHIP 5, RANGE 22

REFUGEE LANDS

CITY OF GRANDVIEW HEIGHTS, COUNTY OF FRANKLIN, STATE OF OHIO

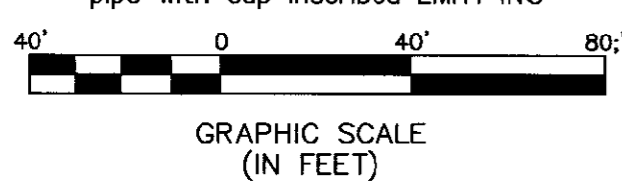
LINE TABLE		
LINE	BEARING	DISTANCE
L1	N78°26'38"E	31.13'
L2	S11°25'16"E	11.50'
L3	N78°26'38"E	9.00'

CURVE TABLE					
CURVE	DELTA	RADIUS	ARC	CH BRG	CH
C1	90°00'00"	14.50'	22.78'	N48°21'58"E	20.51'
C2	14°55'19"	169.50'	44.14'	N85°54'18"E	44.02'



\\CMHDATA01\PROJECT01\20091438\20091438SV\DWG\91438BV4.DWG - LAST SAVED BY TBAXTER [11/5/2009 10:06:46 AM] - PLOTTED BY TBAXTER [11/5/2009 10:08:34 AM]

- = STONE FND.
 - = MON. FND.
 - = I.P. FND.
 - = I.P. SET
 - = MAG. NAIL FND.
 - = MAG. NAIL SET
 - ▲ = R.R. SPK. FND.
 - △ = R.R. SPK. SET
 - = P.K. NAIL FND.
- I.P. Set are 13/16" I.D. iron pipe with cap inscribed EMHT INC



BASIS OF BEARINGS:
The Bearings shown hereon are based on the Ohio State Plane Coordinate System as per South Zone NAD83 (1986 Adjustment). Control for bearings was from coordinates of monuments 5-83 and 4-83, having a bearing of North 00° 22' 10" West, for the west limited access right-of-way of Olentangy River Road, established by the Franklin County Engineering Department, using Global Positioning System procedures and equipment.



By: *[Signature]*
Professional Surveyor No. 8250

RECEIVED

Franklin County Engineer
Dean C. Ringler, P.E., P.S.

<p>EMHT Evans, Mechwart, Hambleton & Tilton, Inc. Engineers • Surveyors • Planners • Scientists 5500 New Albany Road, Columbus, OH 43054 Phone: 614.775.4500 Fax: 614.775.4800</p>	Date: November 5, 2009	
	Scale: 1" = 40'	
	Job No: 2009-1438	
	Sheet: 1 of 1	
REVISIONS		
MARK	DATE	DESCRIPTION