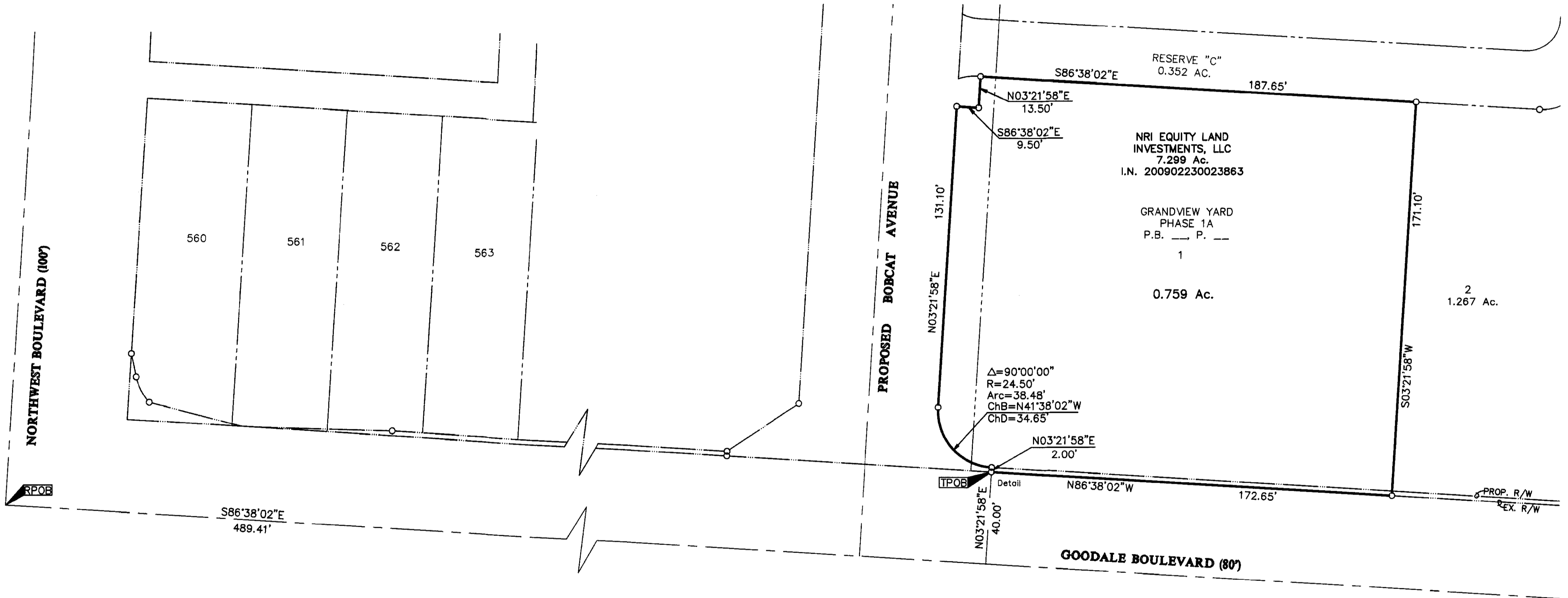
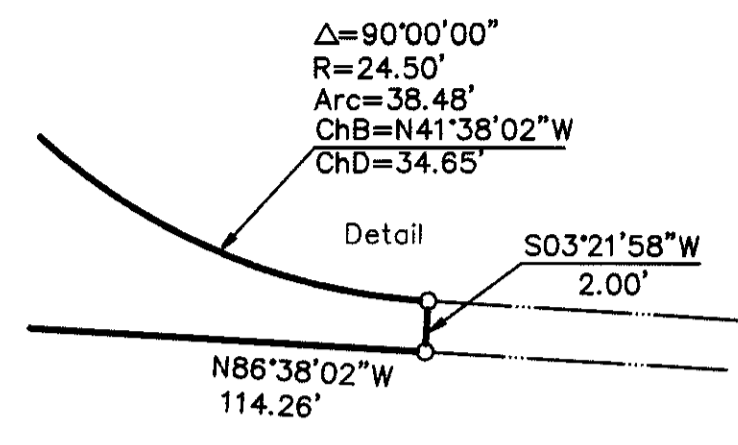
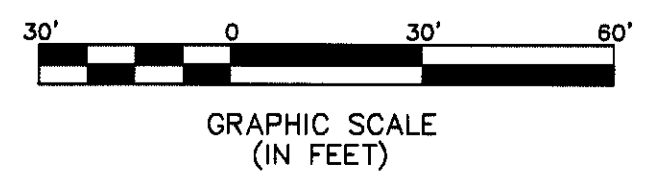


SURVEY OF ACREAGE PARCEL SECTION 7, TOWNSHIP 5, RANGE 22 REFUGEE LANDS CITY OF GRANDVIEW HEIGHTS, COUNTY OF FRANKLIN, STATE OF OHIO



\\C:\MIDATA01\PROJECT01\20091438\20091438\DWG\91438BV2.DWG<18X24 LANDSCAPE> - NO XREFS - LAST SAVED BY TBAXTER [11/10/2009 7:49:54 AM] - PLOTTED BY TBAXTER [11/10/2009 7:49:55 AM]

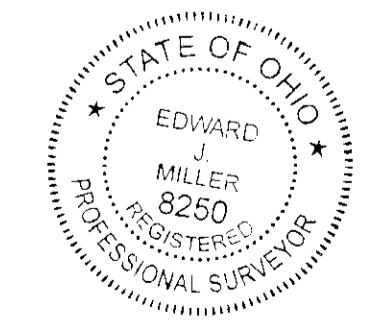
- = STONE FND.
 - = MON. FND.
 - = I.P. FND.
 - = I.P. SET
 - = MAG. NAIL FND.
 - = MAG. NAIL SET
 - ▲ = R.R. SPK. FND.
 - △ = R.R. SPK. SET
 - = P.K. NAIL FND.
- I.P. Set are 13/16" I.D. iron pipe with cap inscribed EMHT INC



BASIS OF BEARINGS:
 The Bearings shown hereon are based on the Ohio State Plane Coordinate System as per South Zone NAD83 (1986 Adjustment). Control for bearings was from coordinates of monuments 5-83 and 4-83, having a bearing of North 00° 22' 10" West, for the west limited access right-of-way of Olentangy River Road, established by the Franklin County Engineering Department, using Global Positioning System procedures and equipment.

RECEIVED

Franklin County Engineer
 Dean C. Ringler, PE, PS



By: _____
 Professional Surveyor No. 8250

EMHT		Date: November 10, 2009
Evans, Mechwart, Hambleton & Tilton, Inc. Engineers • Surveyors • Planners • Scientists 5500 New Albany Road, Columbus, OH 43054 Phone: 614.775.4500 Fax: 614.775.4800		Scale: 1" = 30'
M C M X X V I		Job No: 2009-1438
REVISIONS		Sheet: 1 of 1
MARK	DATE	DESCRIPTION