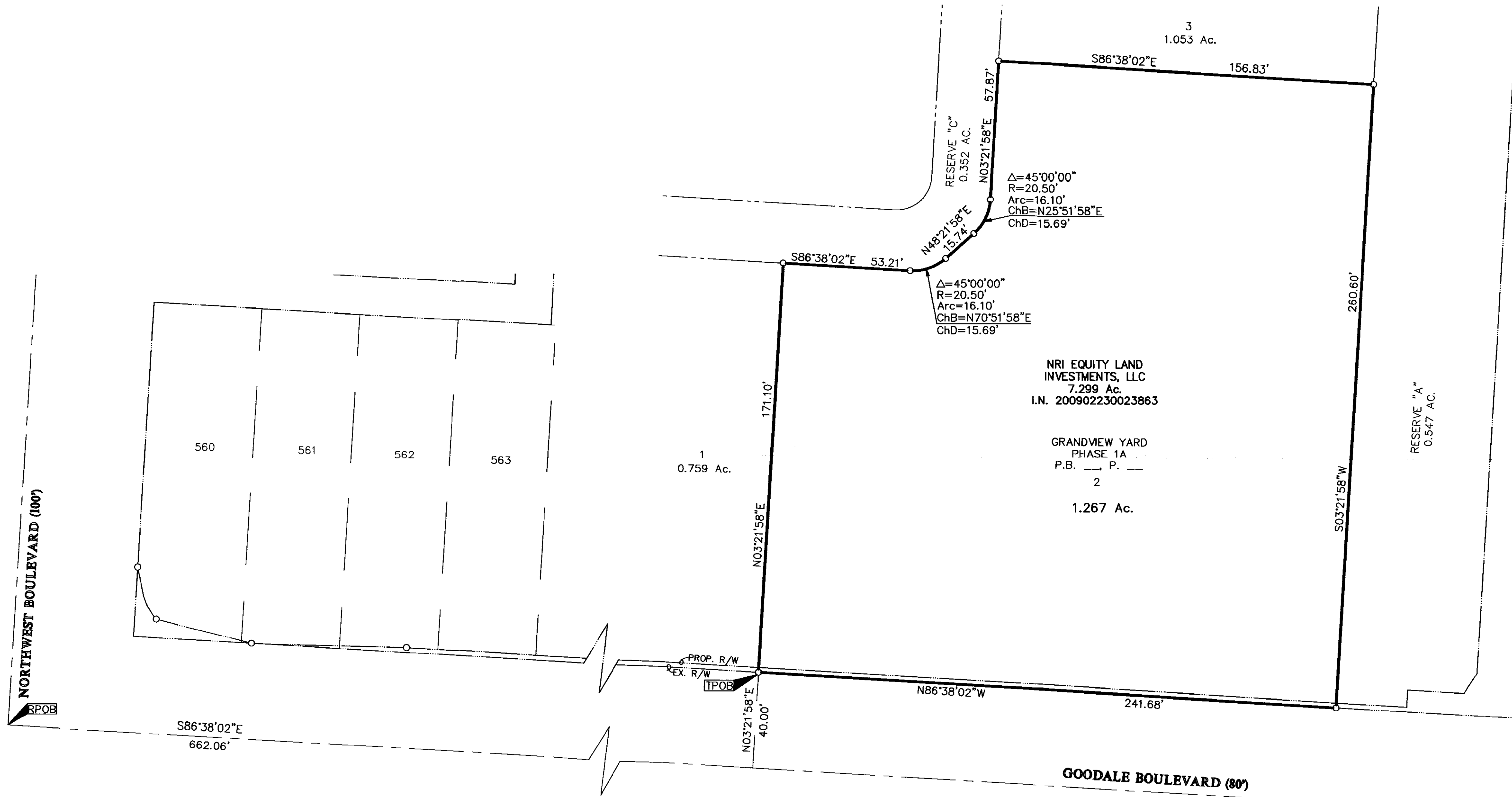


SURVEY OF ACREAGE PARCEL SECTION 7, TOWNSHIP 5, RANGE 22 REFUGEE LANDS CITY OF GRANDVIEW HEIGHTS, COUNTY OF FRANKLIN, STATE OF OHIO



RECEIVED

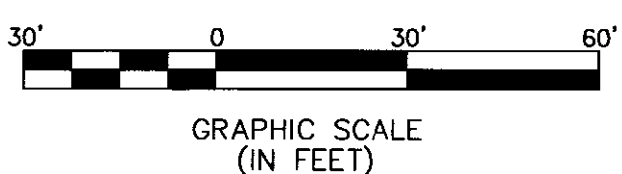
Franklin County Engineer
Dean C. Ringle, P.E., P.S.



By: *[Signature]*
 Professional Surveyor No. 8250

BASIS OF BEARINGS:
 The Bearings shown hereon are based on the Ohio State Plane Coordinate System as per South Zone NAD83 (1986 Adjustment). Control for bearings was from coordinates of monuments 5-83 and 4-83, having a bearing of North 00° 22' 10" West, for the west limited access right-of-way of Olentangy River Road, established by the Franklin County Engineering Department, using Global Positioning System procedures and equipment.

- = STONE FND.
 - = MON. FND.
 - = I.P. FND.
 - = I.P. SET
 - = MAG. NAIL FND.
 - = MAG. NAIL SET
 - ▲ = R.R. SPK. FND.
 - △ = R.R. SPK. SET
 - ◆ = P.K. NAIL FND.
- I.P. Set are 13/16" I.D. iron pipe with cap inscribed EMHT INC



EMHT Evans, Mechwart, Hambleton & Tilton, Inc. Engineers • Surveyors • Planners • Scientists 5500 New Albany Road, Columbus, OH 43054 Phone: 614.775.4500 Fax: 614.775.4800		Date: November 5, 2009
		Scale: 1" = 30'
		Job No: 2009-1438
		Sheet: 1 of 1
REVISIONS		
MARK	DATE	DESCRIPTION

\\CMHDATA01\PROJECT01\20091438\20091438SV\DWG\91438BV3.DWG<18X24 LANDSCAPE> - NO XREFS - LAST SAVED BY TBAXTER [11/5/2009 8:29:16 AM] - PLOTTED BY TBAXTER [11/5/2009 8:31:51 AM]