



Evans, Mechwart, Hambleton & Tillon, Inc.
 Engineers • Surveyors • Planners • Scientists
 5500 New Albany Road, Columbus, OH 43054
 Phone: 614.775.4500 Toll Free: 888.775.3648
 emht.com

SURVEY OF ACREAGE PARCELS

HALF SECTION 52 OF SECTION 29, TOWNSHIP 12, RANGE 21
 HALF SECTION 53 OF SECTION 30, TOWNSHIP 12, RANGE 21
 REFUGEE LANDS

CITY OF COLUMBUS, COUNTY OF FRANKLIN, STATE OF OHIO

Date: November 20, 2009

Scale: 1" = 100'

Job No: 2009-1044

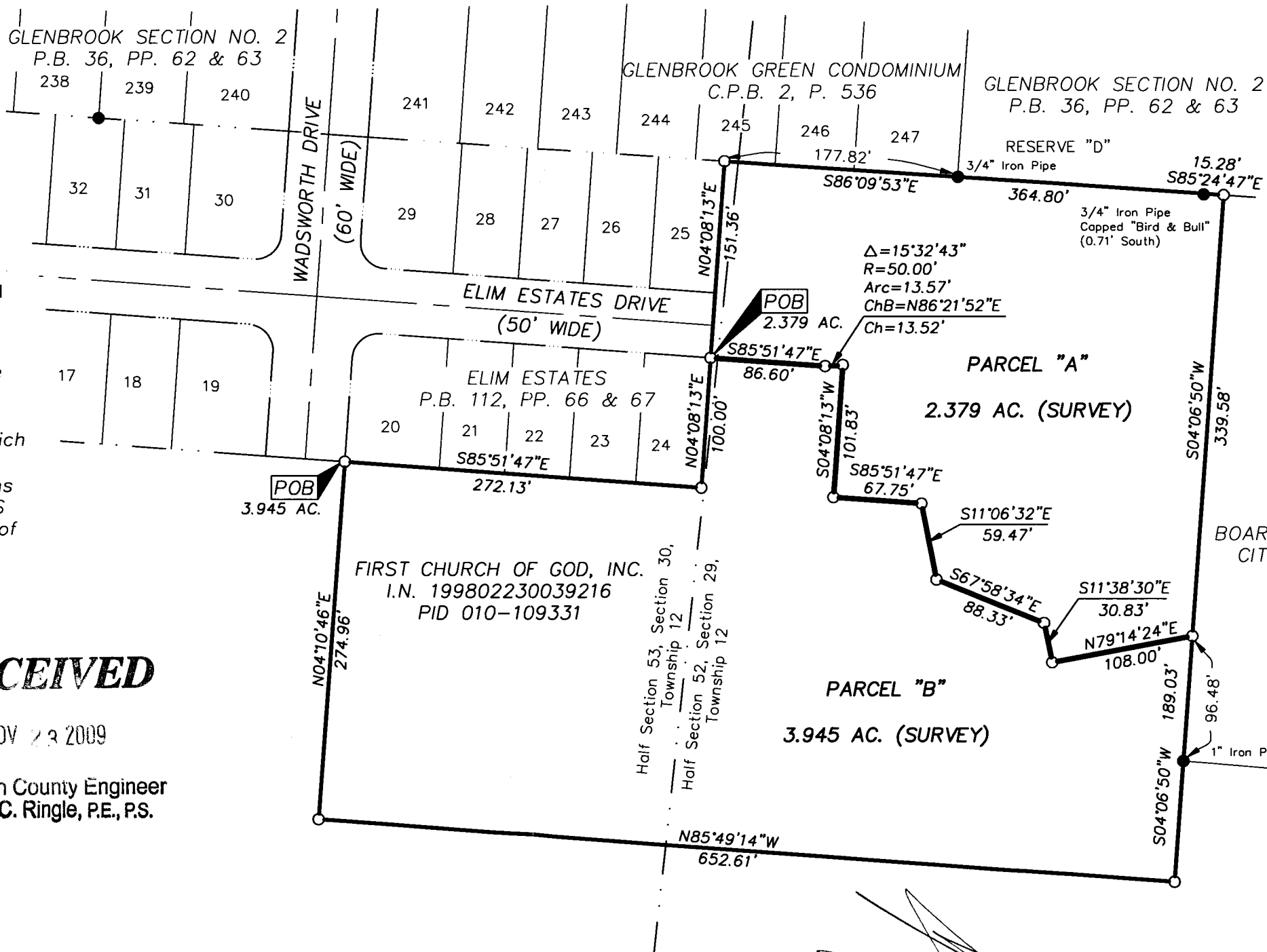
21936

SURVEY NOTE:

This survey was prepared using documents of record, prior plats of survey, and observed evidence located by an actual field survey.

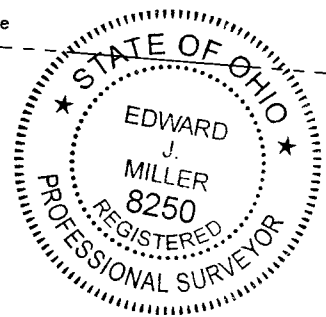
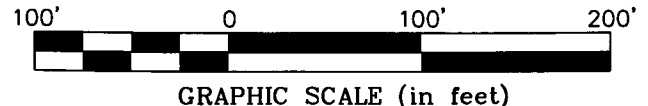
BASIS OF BEARINGS:

The bearings shown hereon are based on the Ohio State Plane Coordinate System, South Zone, NAD83 (1986 Adjustment). Said bearings originated from a field traverse which was tied (referenced) to said coordinate system by GPS observations and observations of selected Franklin County Monuments FCGS 9918 and FCGS 2251. In which a portion of the centerline of Wadsworth Drive has a bearing of S 04° 10' 46" W.



- = STONE FND.
 - = MON. FND.
 - = I.P. FND.
 - = I.P. SET
 - = MAG. NAIL FND.
 - = MAG. NAIL SET
 - ▲ = R.R. SPK. FND.
 - △ = R.R. SPK. SET
 - ◆ = P.K. NAIL FND.
- I.P. Set are 13/16" I.D. iron pipe with cap inscribed EMHT INC

RECEIVED
 NOV 23 2009
 Franklin County Engineer
 Dean C. Ringle, P.E., P.S.



By
 Professional Surveyor No. 8250
 Edward J. Miller

11/20/09
 Date