

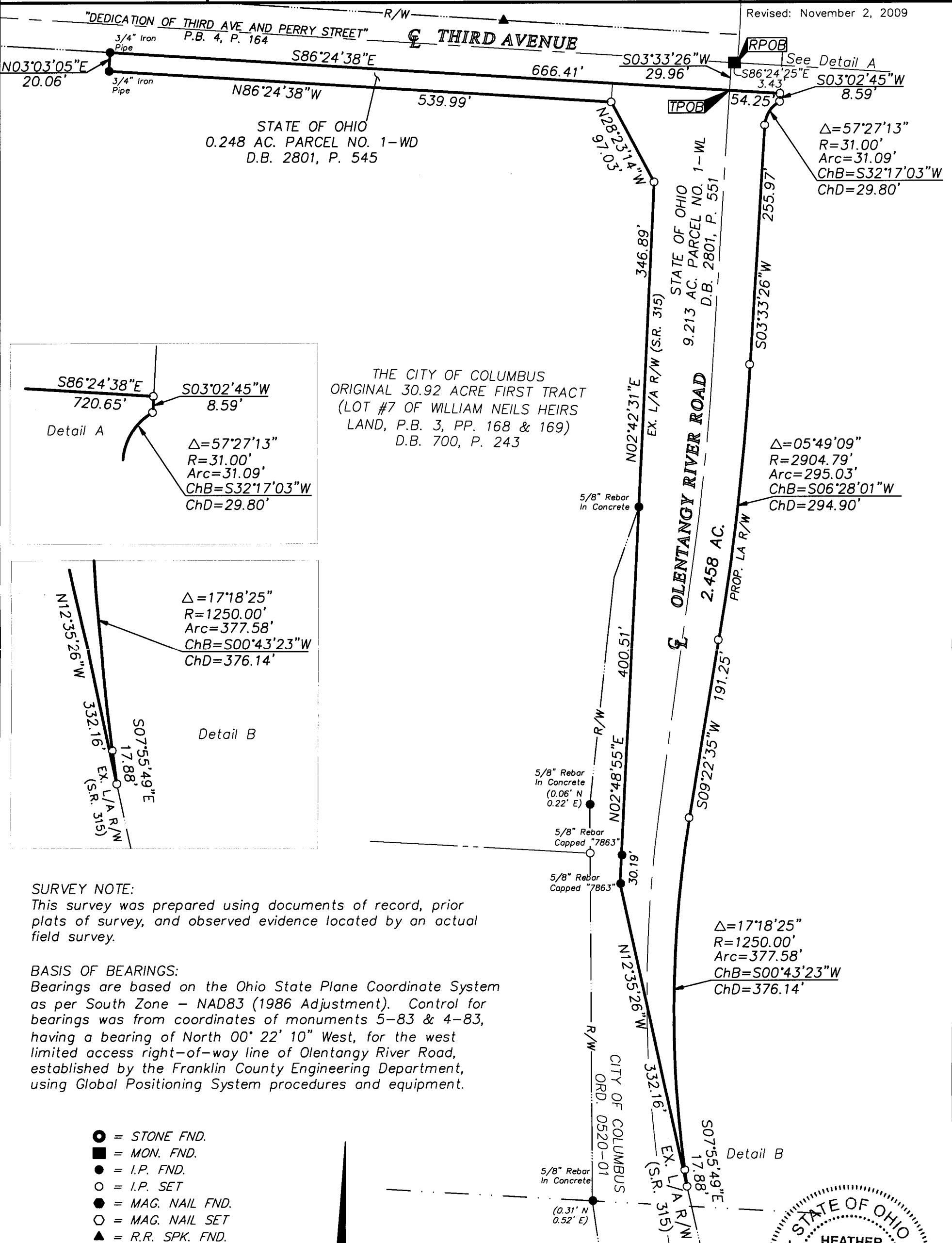
21934

F-8-B, E

**EMH&T**  
 Evans, Mechwart, Hambleton & Tilton, Inc.  
 Engineers • Surveyors • Planners • Scientists  
 5500 New Albany Road, Columbus, OH 43054  
 Phone: 614.775.4500 Fax: 614.775.4800

**SURVEY OF ACREAGE TRACT  
 SECTION 6, TOWNSHIP 5, RANGE 22  
 REFUGEE LANDS  
 CITY OF COLUMBUS, COUNTY OF FRANKLIN, STATE OF OHIO**

Date: June 5, 2009  
 Scale: 1" = 100'  
 Job No: 2008-1148  
 Revised: November 2, 2009



**SURVEY NOTE:**

This survey was prepared using documents of record, prior plats of survey, and observed evidence located by an actual field survey.

**BASIS OF BEARINGS:**

Bearings are based on the Ohio State Plane Coordinate System as per South Zone - NAD83 (1986 Adjustment). Control for bearings was from coordinates of monuments 5-83 & 4-83, having a bearing of North 00° 22' 10" West, for the west limited access right-of-way line of Olentangy River Road, established by the Franklin County Engineering Department, using Global Positioning System procedures and equipment.

- = STONE FND.
- = MON. FND.
- = I.P. FND.
- = I.P. SET
- = MAG. NAIL FND.
- = MAG. NAIL SET
- ▲ = R.R. SPK. FND.
- △ = R.R. SPK. SET
- ◆ = P.K. NAIL FND.

I.P. Set are 13/16" I.D. iron pipe with cap inscribed EMHT INC



GRAPHIC SCALE (IN FEET)

**RECEIVED**

NOV 03 2009

Franklin County Engineer  
Dean C. Ringle, P.E., P.S.



By *Heather L. King* 11/2/09  
 Professional Surveyor No. 8307

\\CMHDATA01\PROJECT01\20081148\20081148SVL.DWG\81148BV3.DWG<11X17 PORTRAIT CANNON> - NO XREFS - LAST SAVED BY HKING [11/2/2009 9:26:54 AM] - PLOTTED BY HKING [11/2/2009 9:26:54 AM]