

# EMH&T

Evans, Mechwart, Hambleton & Tilton, Inc.  
Engineers • Surveyors • Planners • Scientists  
5500 New Albany Road, Columbus, OH 43054  
Phone: 614.775.4500 Fax: 614.775.4800

21932

## LIMITED ACCESS RIGHT-OF-WAY EASEMENT SECTIONS 6 & 7, TOWNSHIP 5, RANGE 22 REFUGEE LANDS CITY OF COLUMBUS, COUNTY OF FRANKLIN, STATE OF OHIO

### RECEIVED

F-8-E

Date: June 5, 2009

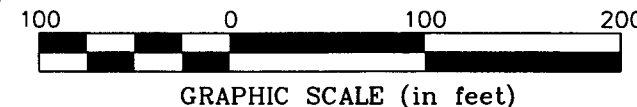
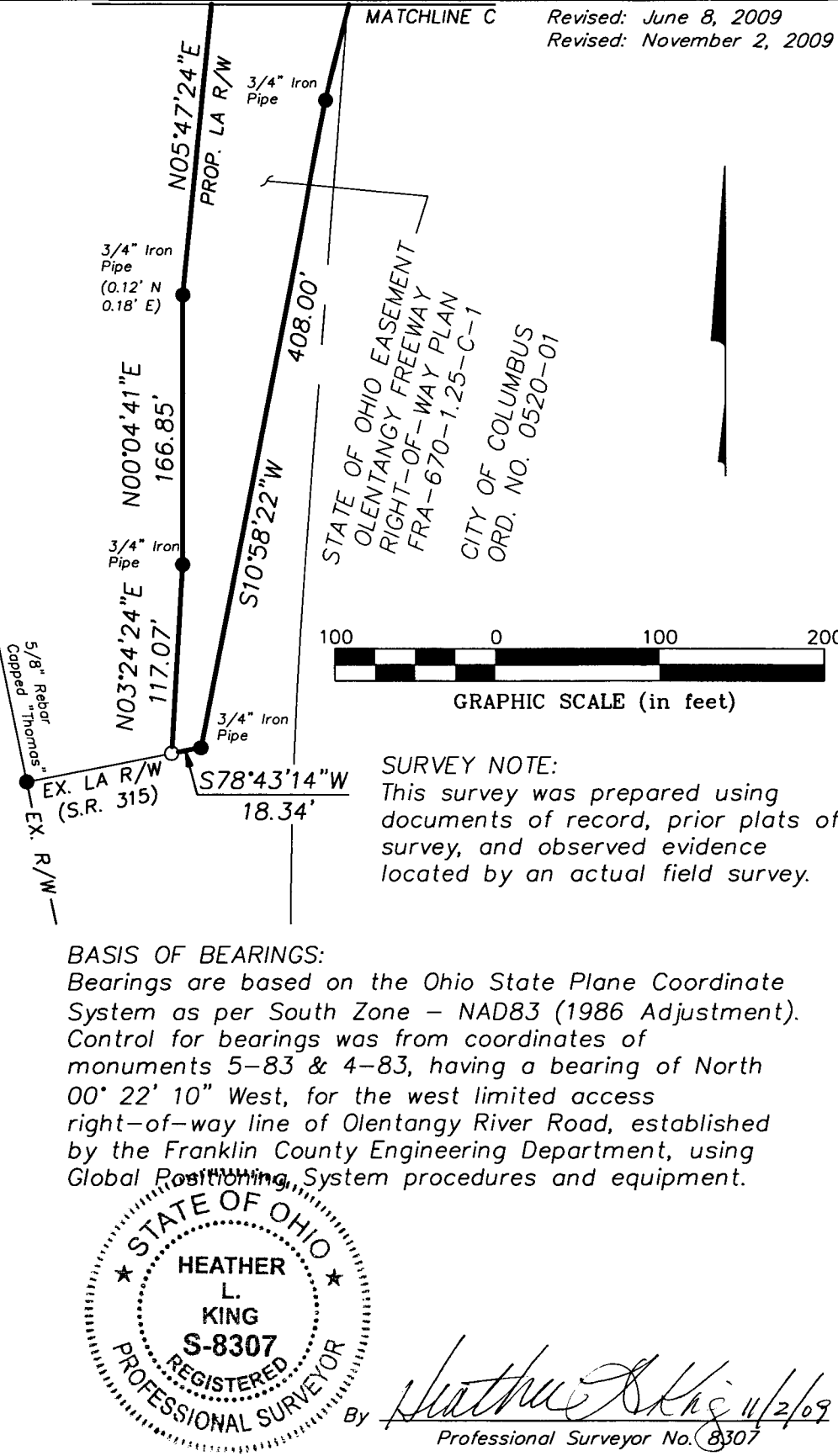
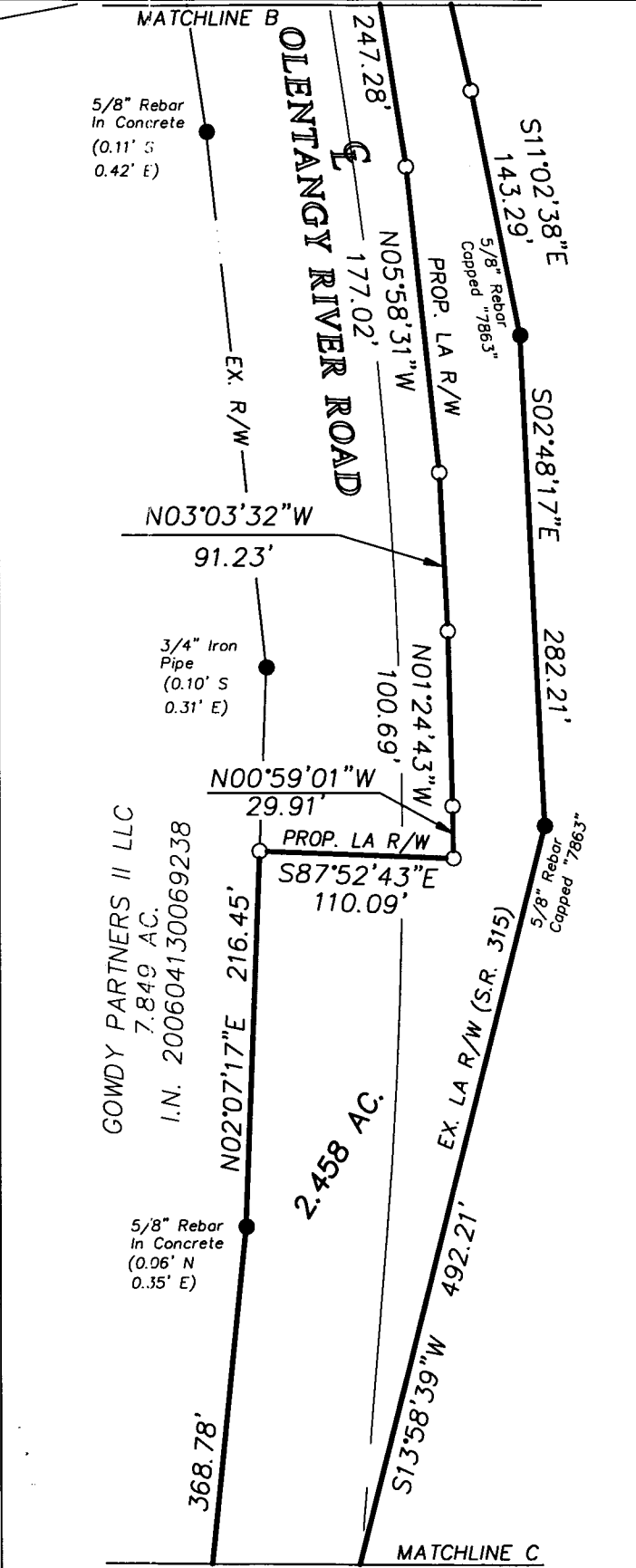
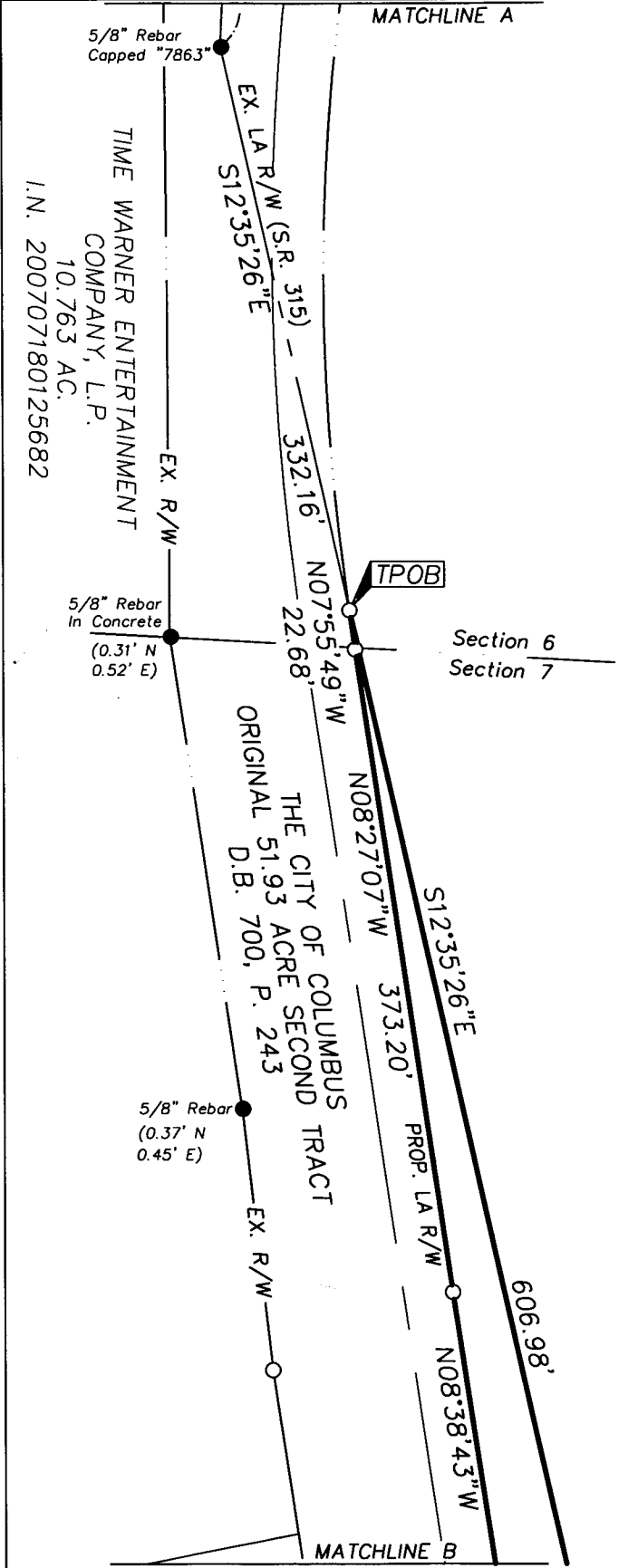
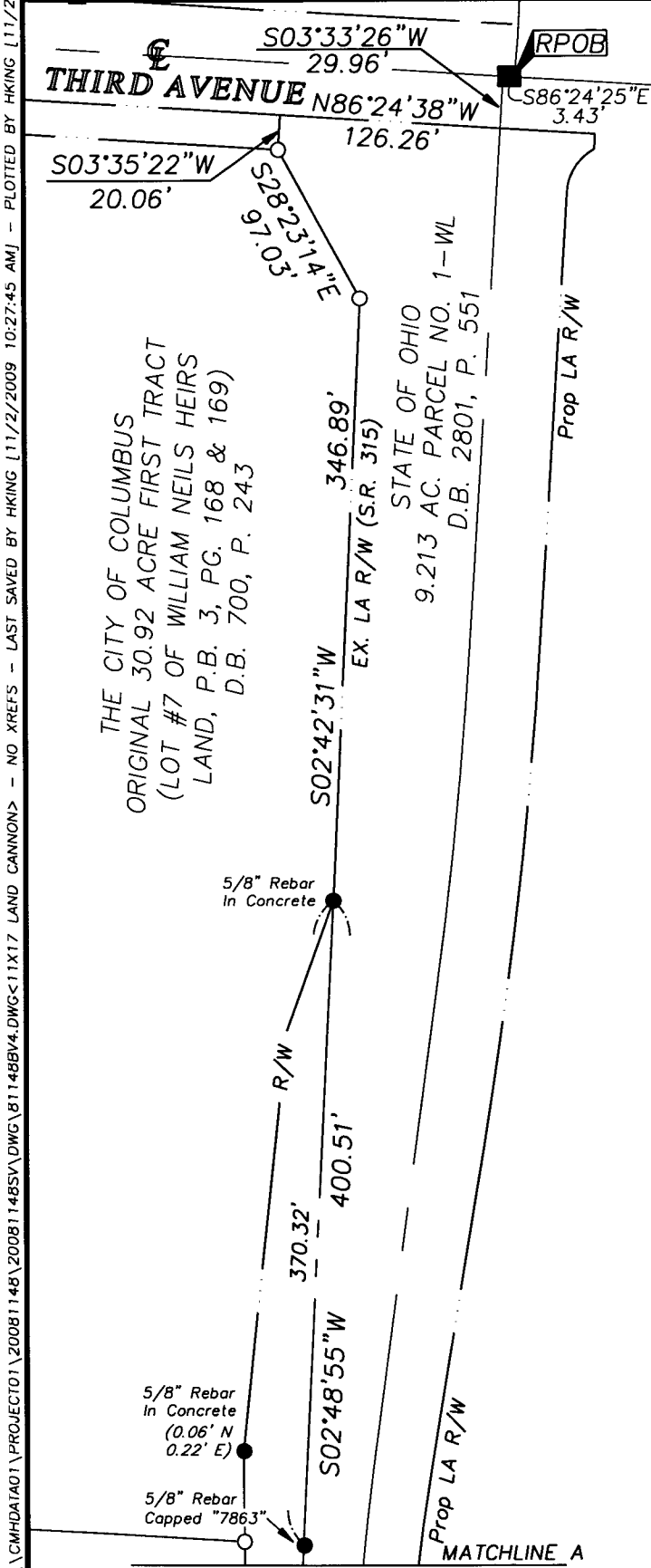
NOV 03 2009

Scale: 1" = 100'

Franklin County Engineer  
Dean C. Ringle, P.E., P.S.

Job No: 2008-1148

Revised: June 8, 2009  
Revised: November 2, 2009



**SURVEY NOTE:**  
This survey was prepared using documents of record, prior plats of survey, and observed evidence located by an actual field survey.

**BASIS OF BEARINGS:**  
Bearings are based on the Ohio State Plane Coordinate System as per South Zone - NAD83 (1986 Adjustment). Control for bearings was from coordinates of monuments 5-83 & 4-83, having a bearing of North 00° 22' 10" West, for the west limited access right-of-way line of Olentangy River Road, established by the Franklin County Engineering Department, using Global Positioning System procedures and equipment.



By *Heather L. King* 11/2/09  
Professional Surveyor No. 8307

\\CMHDATA01\PROJECT01\20081148\20081148SV\DWG\81148BV4.DWG<11X17 LAND CANNON> - NO XREFS - LAST SAVED BY H KING [11/2/2009 10:27:45 AM] - PLOTTED BY H KING [11/2/2009 10:27:45 AM]