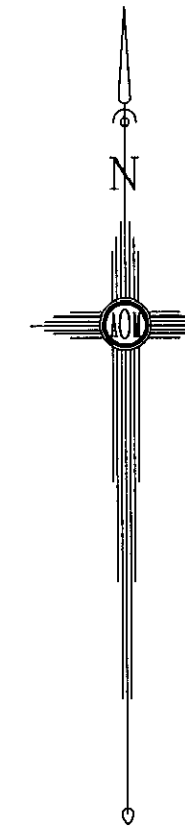
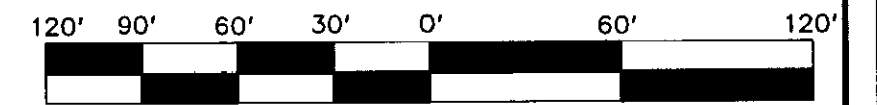


Survey of 0.281 Acres, being part of Lot 11, Third Quarter, Township 2, Range 19,
United States Military Lands, Franklin County, City of Dublin, Ohio.

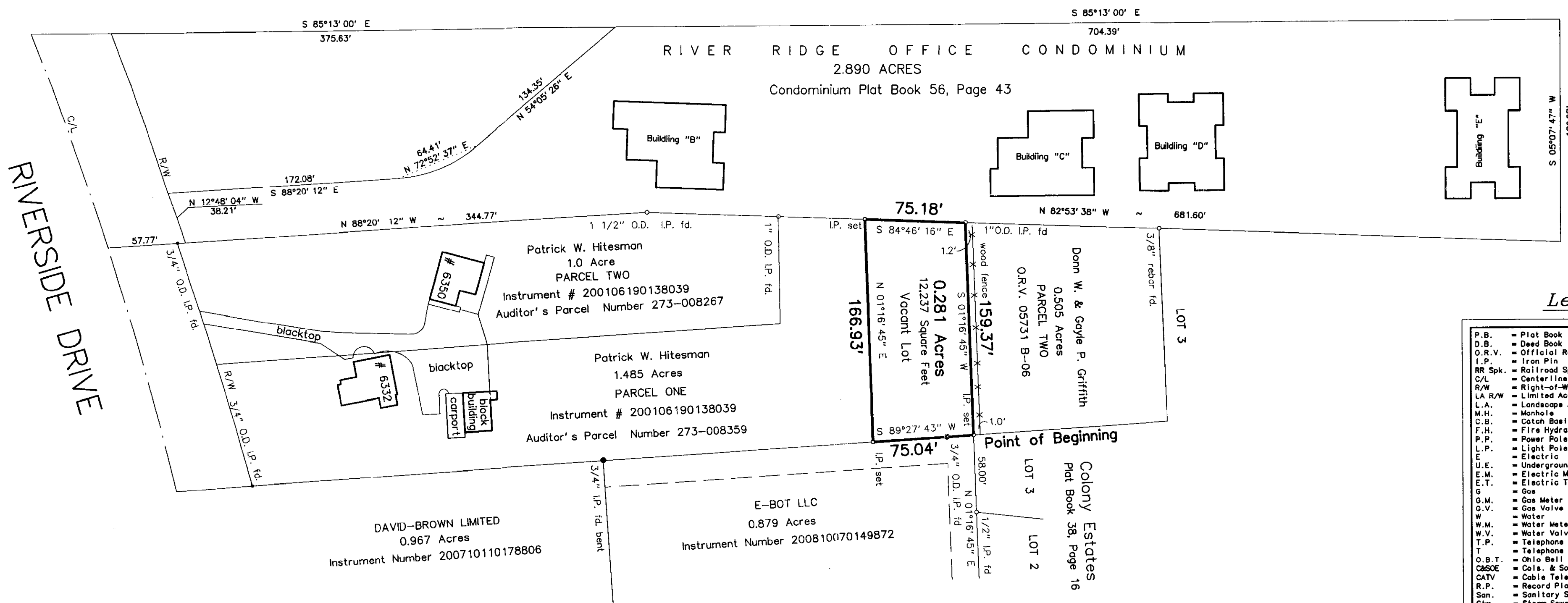
for
Pat Hitesman
and / or
Bill Trembley



REVISIONS:			
No.	Date	Description	By
2	12 October 2009	Parcel Number	reh
1	20 July 2009	lot size change to 75.00 feet	reh



Scale 1" = 60'
15 June 2009



Legend

P.B.	= Plat Book
D.B.	= Deed Book
O.R.V.	= Official Records Volume
I.P.	= Iron Pin
RR Spk.	= Railroad Spike
C/L	= Centerline
R/W	= Right-of-Way
LA R/W	= Limited Access Right-of-Way
L.A.	= Landscape Area
M.H.	= Manhole
C.B.	= Catch Basin
F.H.	= Fire Hydrant
P.P.	= Power Pole
L.P.	= Light Pole
E	= Electric
U.E.	= Underground Electric
E.M.	= Electric Meter
E.T.	= Electric Transformer
G	= Gas
G.M.	= Gas Meter
G.V.	= Gas Valve
W	= Water
W.M.	= Water Meter
W.V.	= Water Valve
T.P.	= Telephone Pedestal
T	= Telephone
O.B.T.	= Ohio Bell Telephone
C&S	= Cole. & Southern Ohio Electric
CATV	= Cable Television
R.P.	= Record Pin
San.	= Sanitary Sewer
Stm.	= Storm Sewer
Comb.	= Combination Sewer
B.T.	= Blocktop
w.w.	= window well
c.w.	= concrete walk
c.s.	= concrete stoop/steps
c.o.	= cleanout
P.I.V.	= Post Indicator Valve

We hereby certify the foregoing Boundary Survey was prepared from actual field measurements in accordance with Chapter 4733-37 Ohio Administrative Code. Iron pins set are 30" X 1" O.D. with an orange plastic plug inscribed "P.S. 6579", unless otherwise noted. Basis of bearings is the west line of Colony Estates held as North 01°16' 45" East as per Plat Book 38, Page 16.

RECEIVED

Franklin County Engineer
Dean C. Ringle, P.E., P.S.

Myers Surveying
COMPANY

2740 East Main Street (614) 235 - 8677
Bexley, Ohio 43209-2577 myers@netset.com

BY: Albert J. Myers 10/12/09
Albert J. Myers, Professional Surveyor No. 6579

3-03-24-2009	X -	T -
--------------	-----	-----

303242009PARCELA2.S90