

21908

E-7-F

RECEIVED

OCT 14 2009

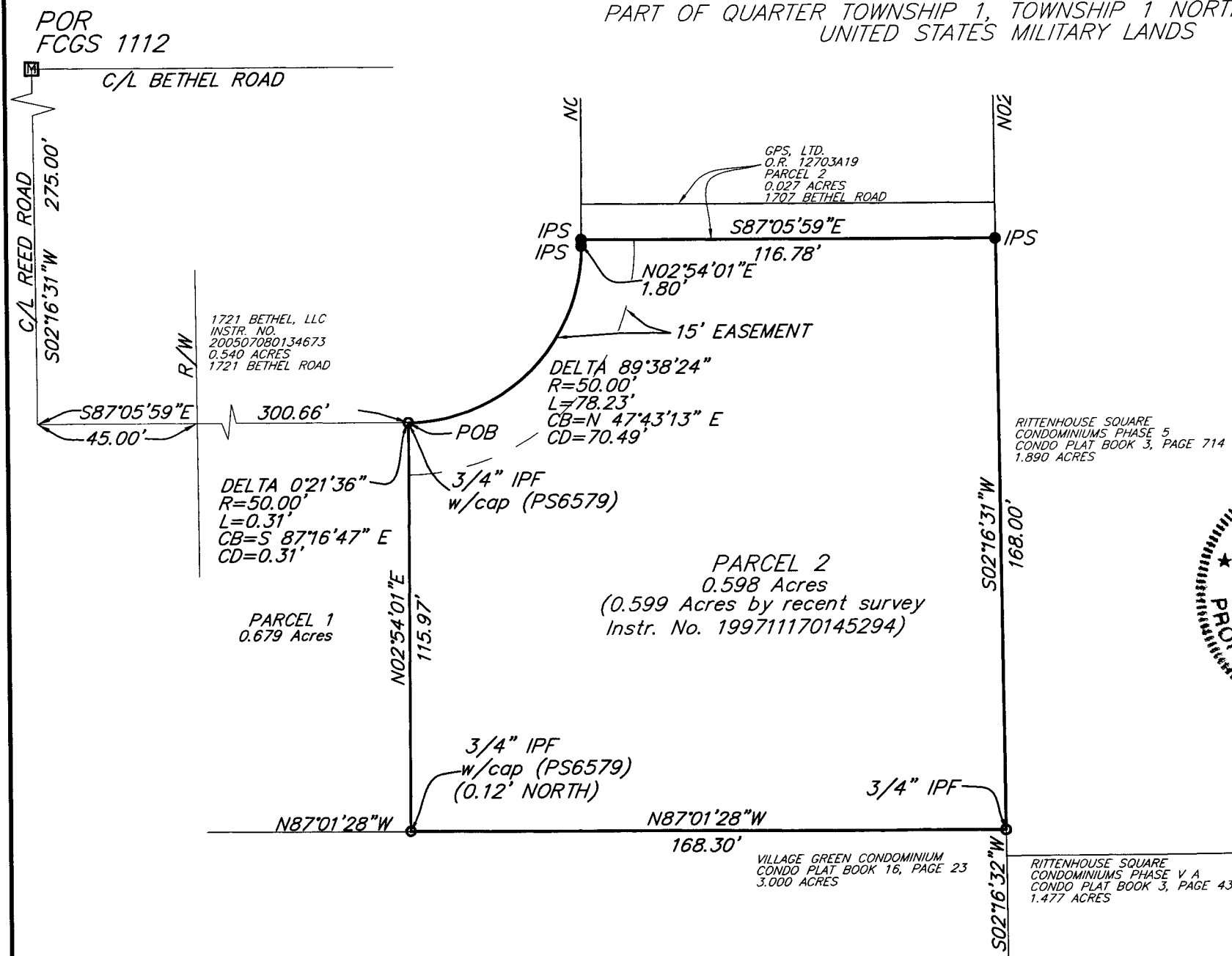
Franklin County Engineer
Dean C. Ringle, P.E., P.S.

EXHIBIT of a
0.598 ACRE PARCEL
SITUATED IN THE STATE OF OHIO, COUNTY OF FRANKLIN, CITY OF COLUMBUS
PART OF QUARTER TOWNSHIP 1, TOWNSHIP 1 NORTH, RANGE 19 WEST
UNITED STATES MILITARY LANDS

BASIS OF BEARING
For the purpose of this exhibit a bearing of North 87°01'28" West was held along the southerly property line of the original Mizpah Fund I LTD parcel of record in Instrument Number 199711170145294.

All Iron Pins to be set are 5/8" rebar with a yellow cap stamped PS8114.

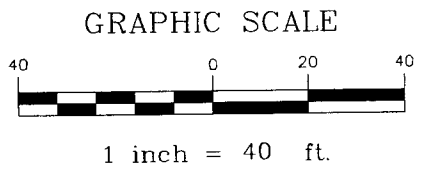
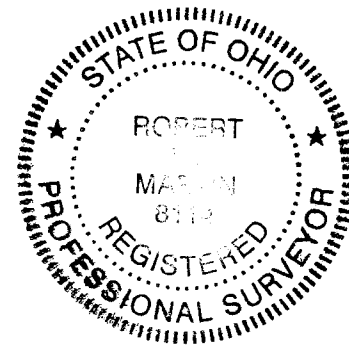
This exhibit is based on an actual field survey performed in September, 2009.



RITTENHOUSE SQUARE
CONDOMINIUMS PHASE 5
CONDO PLAT BOOK 3, PAGE 714
1.890 ACRES

VILLAGE GREEN CONDOMINIUM
CONDO PLAT BOOK 16, PAGE 23
3.000 ACRES

RITTENHOUSE SQUARE
CONDOMINIUMS PHASE V A
CONDO PLAT BOOK 3, PAGE 43
1.477 ACRES



Robert W. Martin 10-13-09
Robert W. Martin 10/13/09
Professional Surveyor No. 8114

PREPARED BY: **TAT WATCON**
CONSULTING ENGINEERS & SURVEYORS
83 Shull Avenue
Gahanna, Ohio 43230
Ph. (614) 414-7979

DRAWN BY	WPS
CHECKED BY	RWM
SCALE	1" = 40'
DATE	10/13/09