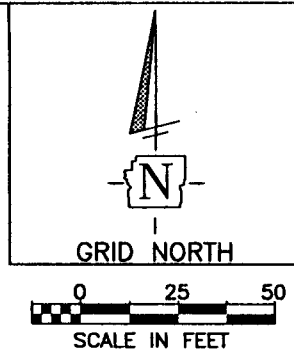


# EXHIBIT OF A 30' DRAINAGE EASEMENT

SITUATE IN THE STATE OF OHIO, COUNTY OF FRANKLIN, TOWNSHIP OF JEFFERSON,  
BEING A PART OF LOT NO. 33, QUARTER TOWNSHIP 1, TOWNSHIP 1,  
RANGE 16, U.S. MILITARY DISTRICT



STEVE STEPHENSON AND  
MARY STEPHENSON  
RESERVE "A"  
INSTRUMENT NO. 200310230339663

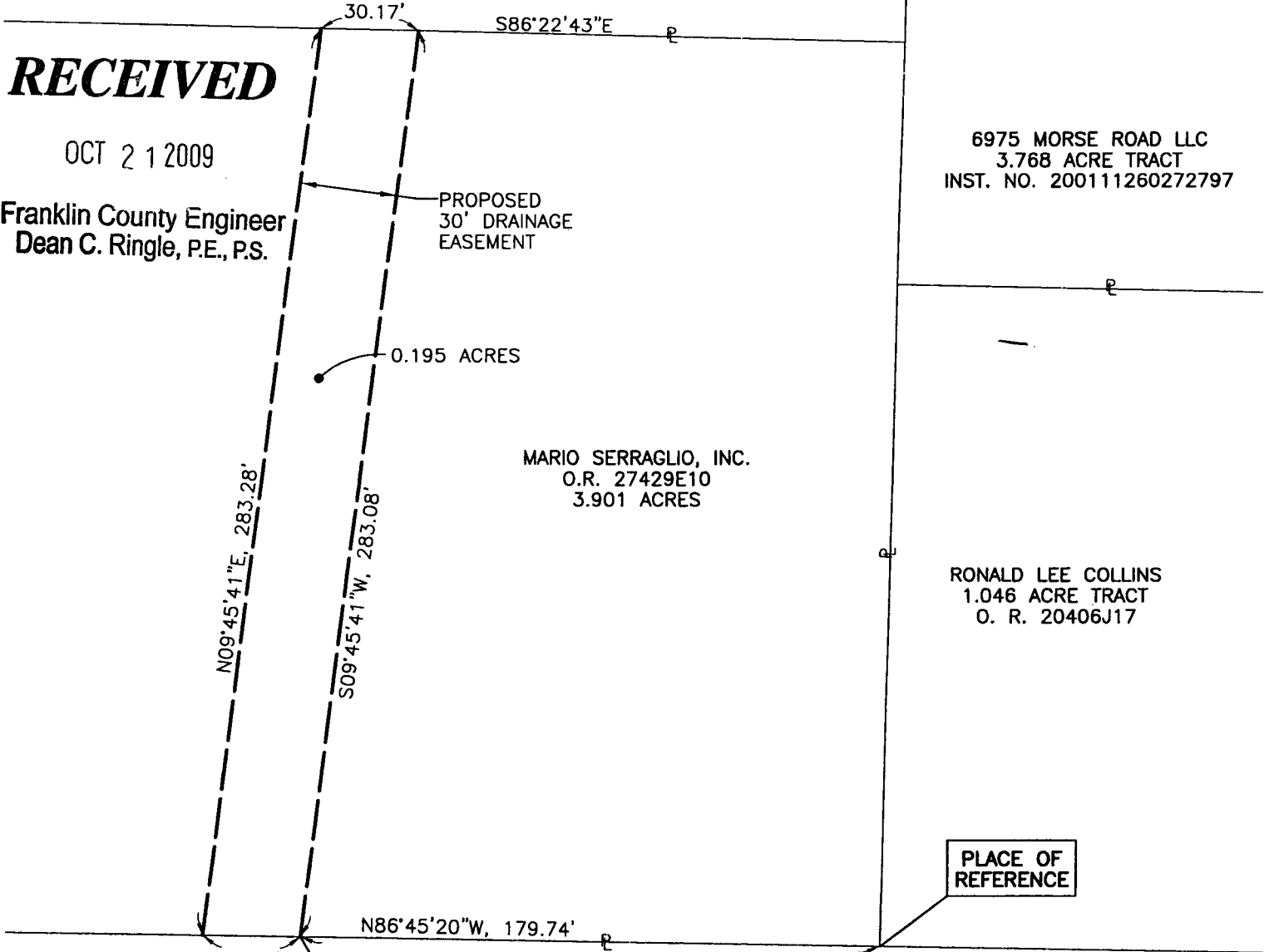
KERN ESTATES  
P.B. 54, PG. 28  
RESERVE "A"

**RECEIVED**

OCT 21 2009

Franklin County Engineer  
Dean C. Ringle, P.E., P.S.

6975 MORSE ROAD LLC  
3.768 ACRE TRACT  
INST. NO. 200111260272797



MARIO SERRAGLIO, INC.  
O.R. 27429E10  
3.901 ACRES

RONALD LEE COLLINS  
1.046 ACRE TRACT  
O. R. 20406J17

PLACE OF BEGINNING

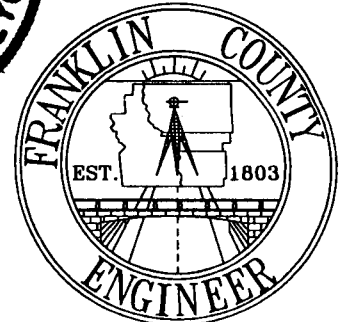
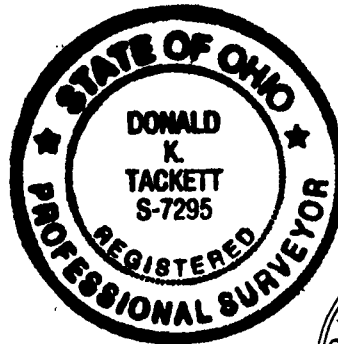
PLACE OF REFERENCE

CECIL F. ALBERY, TRUSTEE OF THE  
CECIL F. ALBERY TRUST AGREEMENT  
1.990 ACRE TRACT  
INSTRUMENT NO. 200707200127450

## BASIS OF BEARINGS:

BEARINGS ARE BASED ON THE OHIO STATE PLANE COORDINATE SYSTEM, SOUTH ZONE AND NORTH AMERICAN DATUM OF 1983 (1986), AS ESTABLISHED FROM A GPS SURVEY PERFORMED BY THE FRANKLIN COUNTY ENGINEER'S SURVEY DEPARTMENT IN 1998 & 2005. OCCUPYING MONUMENTS "FCGS 5341" AND "FCGS 1114".

THIS PLAT WAS PREPARED FROM AN ACTUAL FIELD SURVEY PERFORMED BY THE FRANKLIN COUNTY ENGINEER'S OFFICE IN MAY 2009, ALONG WITH PUBLIC RECORDS ON FILE IN THE FRANKLIN COUNTY RECORDER'S OFFICE AND FRANKLIN COUNTY ENGINEER'S OFFICE.



*Donald K. Tackett*  
DONALD K. TACKETT  
OHIO REGISTERED SURVEYOR NO. 7295

8/10/09  
DATE

| DATE: 08/10/09 |             | DRAWING: XXXX-XX<br>DRAWN BY: DOW |  |
|----------------|-------------|-----------------------------------|--|
| REVISIONS      |             |                                   |  |
| DATE           | DESCRIPTION | BY                                |  |
|                |             |                                   |  |
|                |             |                                   |  |
|                |             |                                   |  |
|                |             |                                   |  |