

#21895



Evans, Mechwart, Hambleton & Tilton, Inc.  
 Engineers • Surveyors • Planners • Scientists  
 5500 New Albany Road, Columbus, OH 43054  
 Phone: 614.775.4500 Toll Free: 888.775.3648  
 emht.com

# SURVEY OF ACREAGE TRACT

SECTION 15, TOWNSHIP 2, RANGE 16

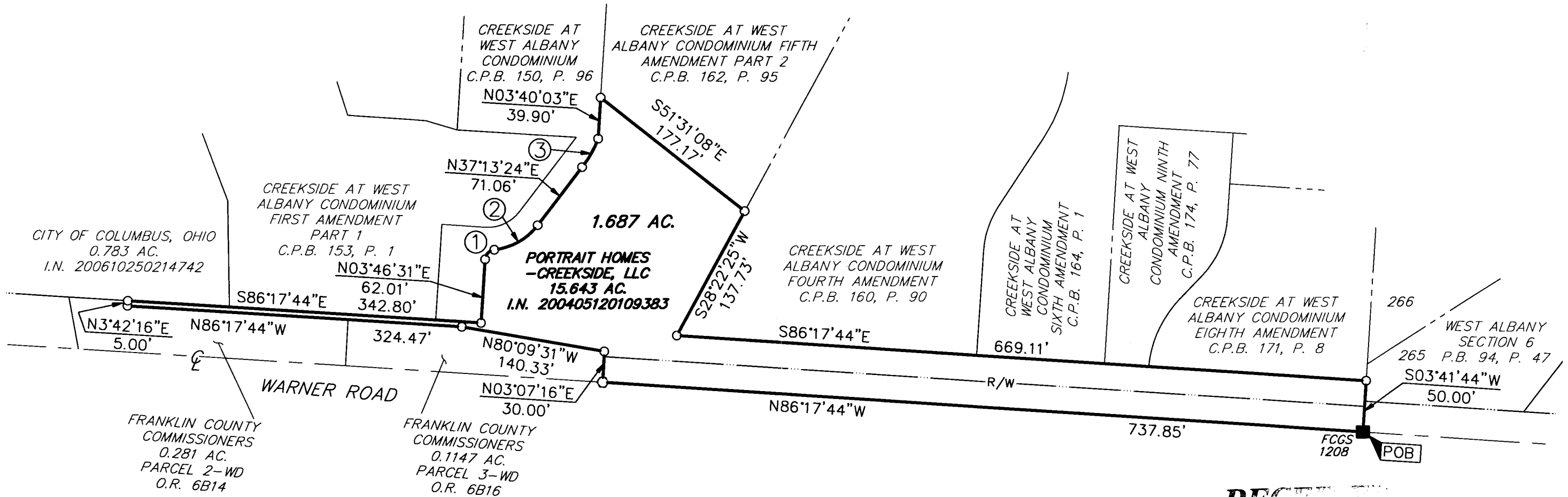
UNITED STATES MILITARY LANDS

CITY OF COLUMBUS, COUNTY OF FRANKLIN, STATE OF OHIO

Date: October 22, 2009

Scale: 1" = 100'

Job No: 2009-1353



- ①  $\Delta=80^{\circ}27'12''$   
 $R=10.00'$   
 $ChBrg=N43^{\circ}55'42''E$   
 $Ch=12.92'$   
 $Arc=14.04'$
- ②  $\Delta=46^{\circ}56'33''$   
 $R=61.00'$   
 $ChBrg=N60^{\circ}41'01''E$   
 $Ch=48.59'$   
 $Arc=49.98'$
- ③  $\Delta=19^{\circ}43'00''$   
 $R=93.08'$   
 $ChBrg=N29^{\circ}24'51''E$   
 $Ch=31.87'$   
 $Arc=32.03'$

**RECEIVED**

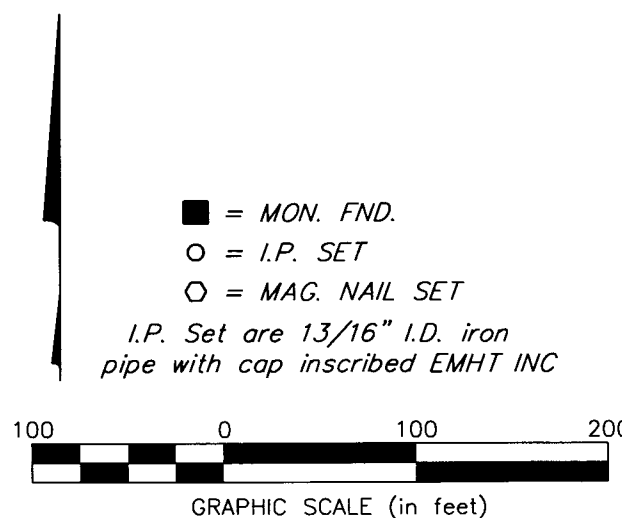
OCT 23 2009

Franklin County Engineer  
 Dean C. Ringle, P.E., P.S.



By [Signature] Date 10/22/09  
 Professional Surveyor No. 8250

**BASIS OF BEARINGS:** Bearings are based on the Ohio State Plane Coordinate System as per NAD 83 (1986 adjustment). Control for bearings was from coordinates of monuments 8824 and 8825, having a bearing of North  $86^{\circ}29'28''$  West, established by the Franklin County Engineering Department, using Global Positioning System procedures and equipment.



J:\2009\1353\20091353SV\DWG\91353BV.DWG plotted by BAXTER, THERESA on 10/22/2009 2:49:55 PM last saved by TBAXTER on 10/22/2009 2:29:28 PM Xrefs: