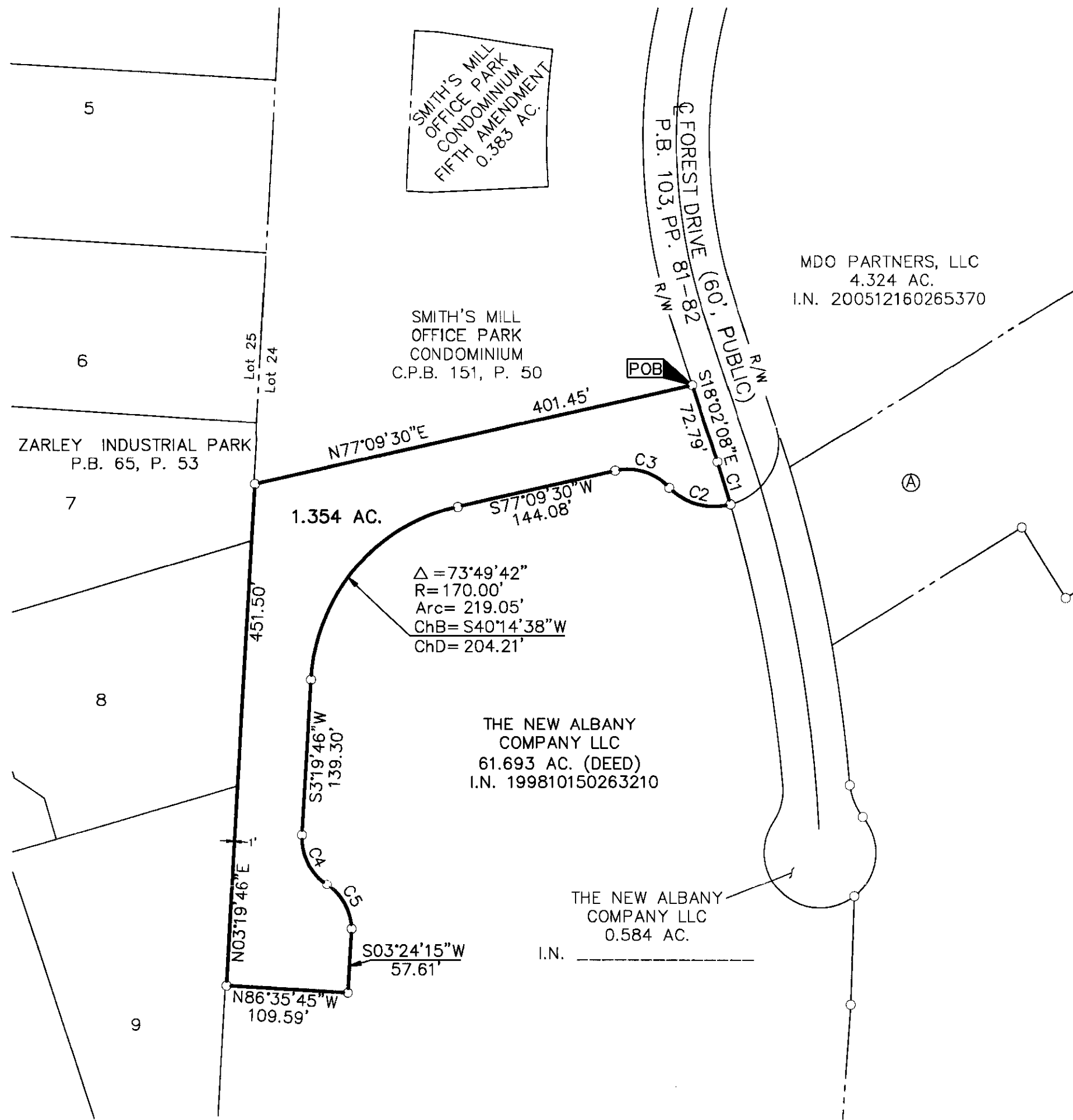


SURVEY OF ACREAGE PARCEL

LOT 24, QUARTER TOWNSHIP 4, TOWNSHIP 2, RANGE 16

UNITED STATES MILITARY LANDS

VILLAGE OF NEW ALBANY, COUNTY OF FRANKLIN, STATE OF OHIO



Ⓐ 4.087 AC.

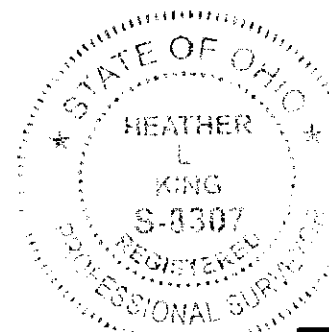
Instrument Number 200710250185822
 7277 NA GROUP I, LLC (ORIGINAL: 86.131%;
 REMAINDER: 7.515%)
 7277 NA PRIVATE INVESTOR II, LLC (7.246%)
 7277 NA PRIVATE INVESTOR XI, LLC (6.623%)

Instrument Number 200712200217239
 7277 NA PRIVATE INVESTOR III, LLC (1.862%)
 7277 NA PRIVATE INVESTOR IV, LLC (1.475%)
 7277 NA PRIVATE INVESTOR V, LLC (1.475%)
 7277 NA PRIVATE INVESTOR VI, LLC (2.864%)
 7277 NA PRIVATE INVESTOR VII, LLC (1.944%)
 7277 NA PRIVATE INVESTOR VIII, LLC (1.944%)
 7277 NA PRIVATE INVESTOR IX, LLC (4.449%)
 7277 NA PRIVATE INVESTOR X, LLC (5.013%)
 7277 NA PRIVATE INVESTOR XII, LLC (2.864%)
 7277 NA PRIVATE INVESTOR XIV, LLC (5.058%)
 7277 NA PRIVATE INVESTOR XV, LLC (10.025%)
 7277 NA PRIVATE INVESTOR XVI, LLC (4.354%)
 7277 NA PRIVATE INVESTOR XVII, LLC (2.341%)
 7277 NA PRIVATE INVESTOR XVIII, LLC (0.716%)
 7277 NA PRIVATE INVESTOR XIX, LLC (1.790%)
 7277 NA PRIVATE INVESTOR XX, LLC (1.790%)
 7277 NA PRIVATE INVESTOR XXI, LLC (2.193%)
 7277 NA PRIVATE INVESTOR XXIII, LLC (3.074%)
 7277 NA PRIVATE INVESTOR XXV, LLC (2.619%)
 7277 NA PRIVATE INVESTOR XXVI, LLC (7.161%)
 7277 NA PRIVATE INVESTOR XXVII, LLC (2.864%)
 7277 NA PRIVATE INVESTOR XXXI, LLC (0.358%)

Instrument Number 200801080003633
 7277 NA PRIVATE INVESTOR XXII, LLC (2.864%)
 7277 NA PRIVATE INVESTOR XXIV, LLC (2.864%)
 7277 NA PRIVATE INVESTOR XXVIII, LLC (0.358%)
 7277 NA PRIVATE INVESTOR XXX, LLC (10.025%)

CURVE TABLE					
CURVE	DELTA	RADIUS	ARC	CH BRG	CH
C1	01°47'50"	1270.00'	39.84'	S17°08'13"E	39.84'
C2	59°17'36"	57.60'	59.61'	N75°09'00"W	56.98'
C3	60°57'18"	50.00'	53.20'	N72°21'44"W	50.72'
C4	60°00'00"	50.00'	52.36'	S26°35'45"E	50.00'
C5	54°34'51"	50.00'	47.63'	S29°18'21"E	45.85'

- = STONE FND.
 - = MON. FND.
 - = I.P. FND.
 - = I.P. SET
 - = MAG. NAIL FND.
 - = MAG. NAIL SET
 - ▲ = R.R. SPK. FND.
 - ▲ = R.R. SPK. SET
 - △ = R.R. SPK. SET
 - ◆ = P.K. NAIL FND.
- I.P. Set are 13/16" I.D. iron pipe with cap inscribed EMHT INC



By *Heather L. King* 10/1/09
 Professional Surveyor No. 8307 Date

This survey is based on an actual field survey performed by EMH&T, Inc., in February 20, 2004.

BASIS OF BEARINGS: The bearings shown are based on the same meridian as the bearings shown on the plat entitled "Smith's Mill Road Dedication and Easements", of record in Plat Book 95, Pages 91-94, Recorder's Office, Franklin County, Ohio. On said plat of record a portion of centerline of Smith's Mill Road has a bearing of South 86°23'10" East.

<p>Evans, Mechwart, Hambleton & Tilton, Inc. Engineers • Surveyors • Planners • Scientists 5500 New Albany Road, Columbus, OH 43054 Phone: 614.775.4500 Toll Free: 888.775.3648 emht.com</p>	Date: September 22, 2009	
	Scale: 1" = 100'	
	Job No: 2009-1104	
	Sheet: 1 of 1	
REVISIONS		
MARK	DATE	DESCRIPTION