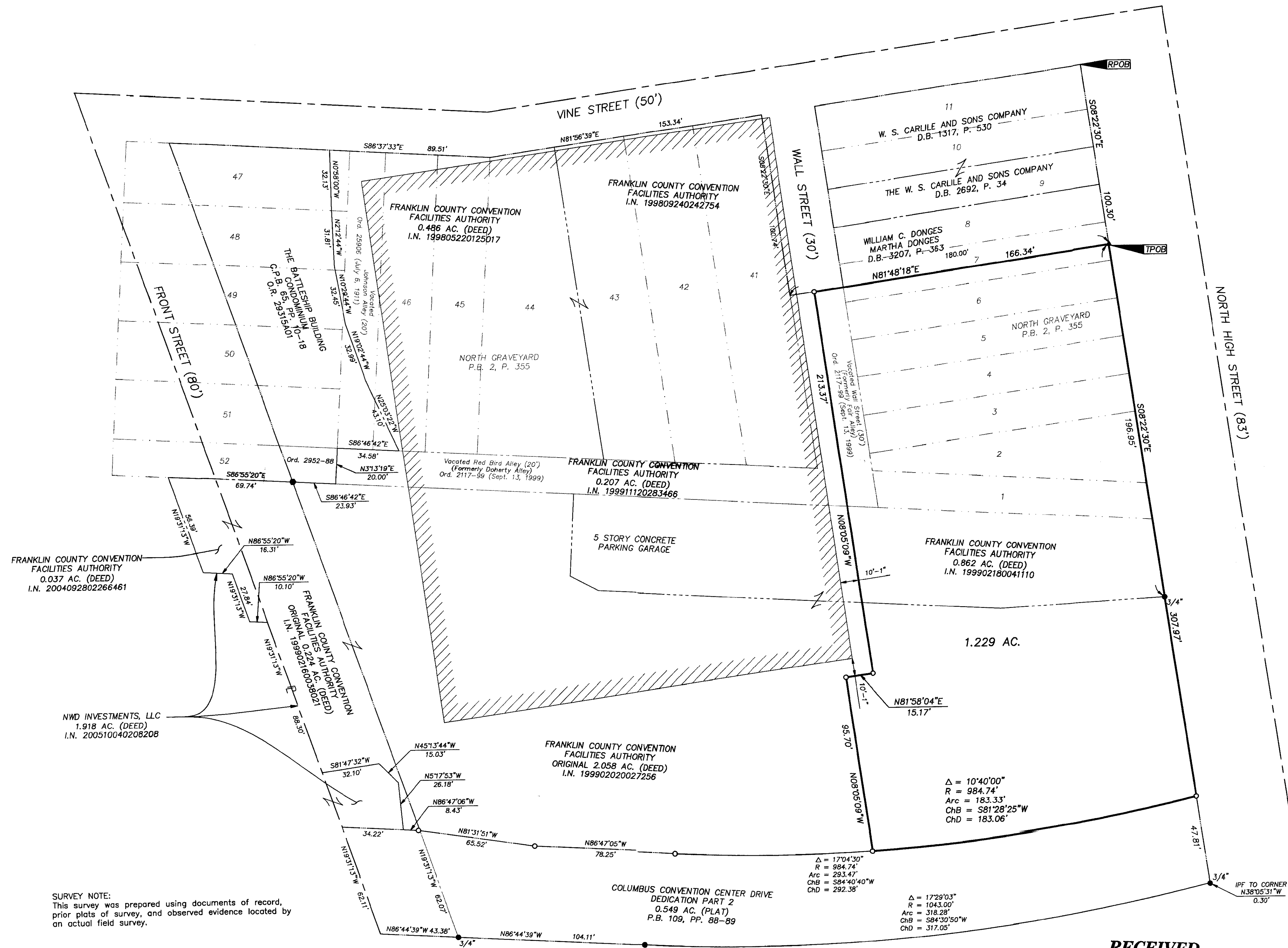


BOUNDARY SURVEY

HALF SECTION 10, SECTION 8, TOWNSHIP 5, RANGE 22

REFUGEE LANDS

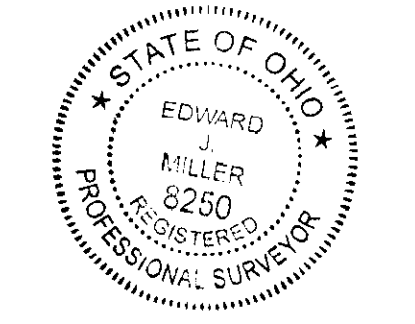
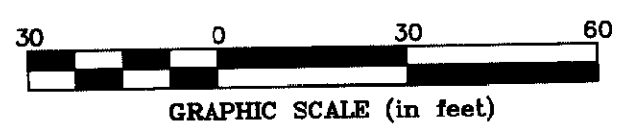
CITY OF COLUMBUS, COUNTY OF FRANKLIN, STATE OF OHIO



SURVEY NOTE:
This survey was prepared using documents of record, prior plats of survey, and observed evidence located by an actual field survey.

BASIS OF BEARINGS:
The bearings shown hereon are based on the Ohio State Plane Coordinate System, South Zone, NAD83 (1995). Said bearings originated from a field traverse which was referenced to said coordinate system by GPS observations and observations of monuments 4-83 and 13-83 as published by the Franklin County Engineer's Department. The portion of the centerline of Vine Street, having a bearing of South 86° 37' 33" East and monumented as shown hereon, is designated the "basis of bearing" for this survey.

- = STONE FND.
 - = MON. FND.
 - = I.P. FND.
 - = I.P. SET
 - = MAG. NAIL FND.
 - = MAG. NAIL SET
 - △ = R.R. SPK. FND.
 - △ = R.R. SPK. SET
 - = P.K. NAIL FND.
 - = P.K. NAIL SET
- I.P. Set are 13/16" I.D. iron pipe with cap inscribed EMHT INC



By *Edward J. Miller* 9/22/09
 Edward J. Miller
 Professional Surveyor No. 8250
 Date

RECEIVED
 EP 23 2009
 Franklin County Engineer
 Dean C. Ringle, P.E., P.S.

EMHT		Date: September 22, 2009
Evans, Mechwart, Hambleton & Titon, Inc. Engineers - Surveyors - Planners - Scientists 5500 New Albany Road, Columbus, OH 43254 Phone: 614.775.4550 Fax: 614.775.4600		Scale: 1" = 30'
M C M X X V I		Job No: 2009-1014
REVISIONS		Sheet: 1 of 1
MARK	DATE	DESCRIPTION

J:\2009\1014\20091014\20091014\20091014.dwg printed by: GSEDER, STEVEN on 9/22/2009 4:30:04 PM last saved by: SBOEGER on 9/22/2009 3:10:45 PM