

G-3-D



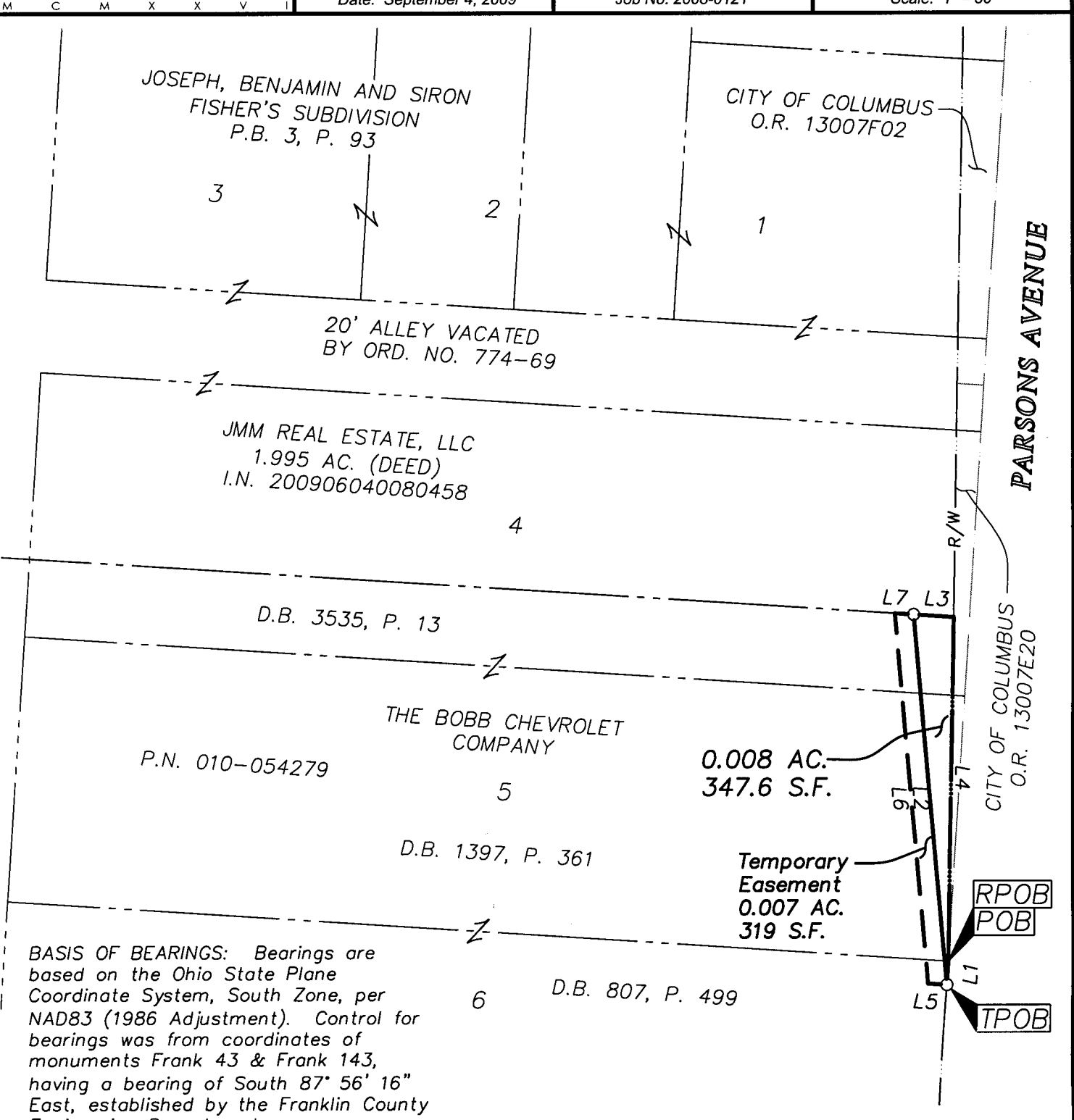
Evans, Mechwart, Hambleton & Tilton, Inc.  
Engineers • Surveyors • Planners • Scientists  
5500 New Albany Road, Columbus, OH 43054  
Phone: 614.775.4500 Fax: 614.775.4800

# SURVEY OF ACREAGE TRACT SECTION 15, TOWNSHIP 5, RANGE 22 REFUGEE LANDS CITY OF COLUMBUS, COUNTY OF FRANKLIN, STATE OF OHIO

Date: September 4, 2009

Job No. 2008-0121

Scale: 1" = 30'



**BASIS OF BEARINGS:** Bearings are based on the Ohio State Plane Coordinate System, South Zone, per NAD83 (1986 Adjustment). Control for bearings was from coordinates of monuments Frank 43 & Frank 143, having a bearing of South 87° 56' 16" East, established by the Franklin County Engineering Department.

**SURVEY NOTE:** This survey was prepared using documents of record, prior plats of survey, and observed evidence located by an actual field survey.

Occupation is as shown hereon.

- = STONE FND.
- = MON. FND.
- = I.P. FND.
- = I.P. SET
- = MAG. NAIL FND.
- = MAG. NAIL SET
- ▲ = R.R. SPK. FND.
- △ = R.R. SPK. SET
- ◆ = P.K. NAIL FND.

I.P. Set are 13/16" I.D. iron pipes with cap inscribed EMHT INC



LINE	BEARING	DISTANCE
L1	S03°37'59"W	5.02'
L2	N05°01'42"W	79.74'
L3	S86°17'22"E	8.60'
L4	S00°59'30"W	73.87'
L5	N86°22'01"W	4.05'
L6	N05°01'42"W	79.74'
L7	S86°17'22"E	4.05'

# RECEIVED

SEP 10 2009

Franklin County Engineer  
Dean C. Ringle, P.E., P.S.



GRAPHIC SCALE (in feet)

By \_\_\_\_\_  
Professional Surveyor No. 8250

\\CMHDATA01\PROJECT01\20080121\20080121SV.DWG\80121RA12.DWG<LEGAL PORTRAIT> - 1 XREF: 80121XRW - LAST SAVED BY SCEIGER [9/4/2009 11:15:01 AM] - PLOTTED BY SCEIGER [9/4/2009 2:48:53 PM]