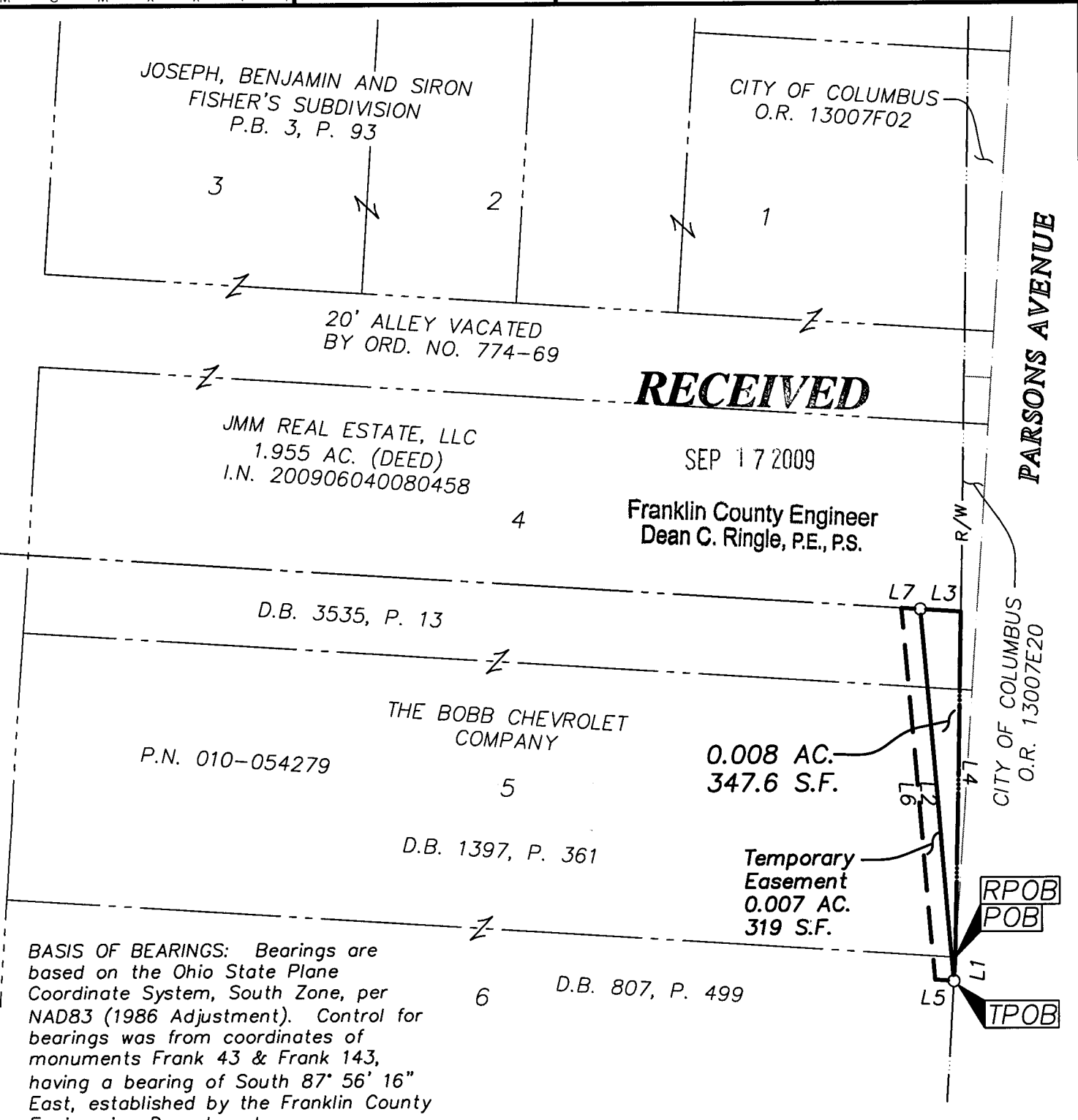


63D

EMH&T
 Evans, Mechwart, Hambleton & Tilton, Inc.
 Engineers • Surveyors • Planners • Scientists
 5500 New Albany Road, Columbus, OH 43054
 Phone: 614.775.4500 Fax: 614.775.4800

SURVEY OF ACREAGE TRACT
SECTION 15, TOWNSHIP 5, RANGE 22
REFUGEE LANDS
CITY OF COLUMBUS, COUNTY OF FRANKLIN, STATE OF OHIO

Date: September 4, 2009 Job No. 2008-0121 Scale: 1" = 30'



BASIS OF BEARINGS: Bearings are based on the Ohio State Plane Coordinate System, South Zone, per NAD83 (1986 Adjustment). Control for bearings was from coordinates of monuments Frank 43 & Frank 143, having a bearing of South 87° 56' 16" East, established by the Franklin County Engineering Department.

SURVEY NOTE: This survey was prepared using documents of record, prior plats of survey, and observed evidence located by an actual field survey.

Occupation is as shown hereon.

- = STONE FND.
- = MON. FND.
- = I.P. FND.
- = I.P. SET
- = MAG. NAIL FND.
- = MAG. NAIL SET
- ▲ = R.R. SPK. FND.
- △ = R.R. SPK. SET
- = P.K. NAIL FND.

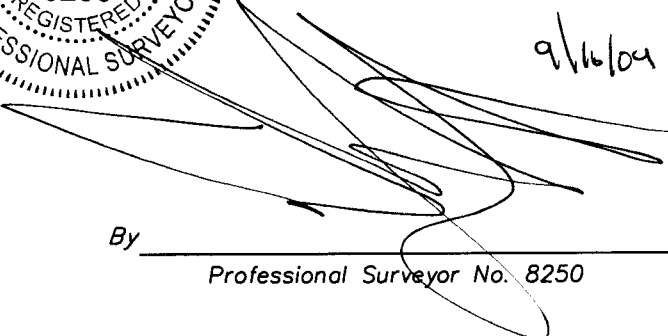
I.P. Set are 13/16" I.D. iron pipes with cap inscribed EMHT INC



GRAPHIC SCALE (in feet)

LINE TABLE		
LINE	BEARING	DISTANCE
L1	S03°37'59"W	5.02'
L2	N05°01'42"W	79.74'
L3	S86°17'22"E	8.60'
L4	S00°59'30"W	73.87'
L5	N86°22'01"W	4.05'
L6	N05°01'42"W	79.74'
L7	S86°17'22"E	4.05'



By  9/16/09
 Professional Surveyor No. 8250

\\CMHDATA01\PROJECT01\20080121\20080121\5A\DWG\80121RA12.DWG<LEGAL PORTRAIT> - 1 XREF: 80121XRW - LAST SAVED BY SCEIGER [9/16/2009 3:28:49 PM] - PLOTTED BY SCEIGER [9/16/2009 3:28:49 PM]