

21823

F-8-E

EMH&T
 Evans, Mechwart, Hambleton & Tilton, Inc.
 Engineers • Surveyors • Planners • Scientists
 5500 New Albany Road, Columbus, OH 43054
 Phone: 614.775.4500 Fax: 614.775.4800

**SURVEY OF ACREAGE TRACT
 SECTIONS 6 & 7, TOWNSHIP 5, RANGE 22
 REFUGEE LANDS
 CITY OF COLUMBUS, COUNTY OF FRANKLIN, STATE OF OHIO**

RECEIVED

AUG 14 2009

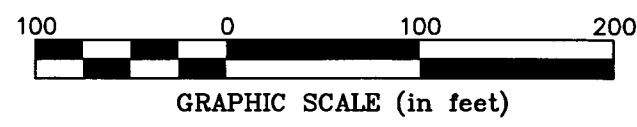
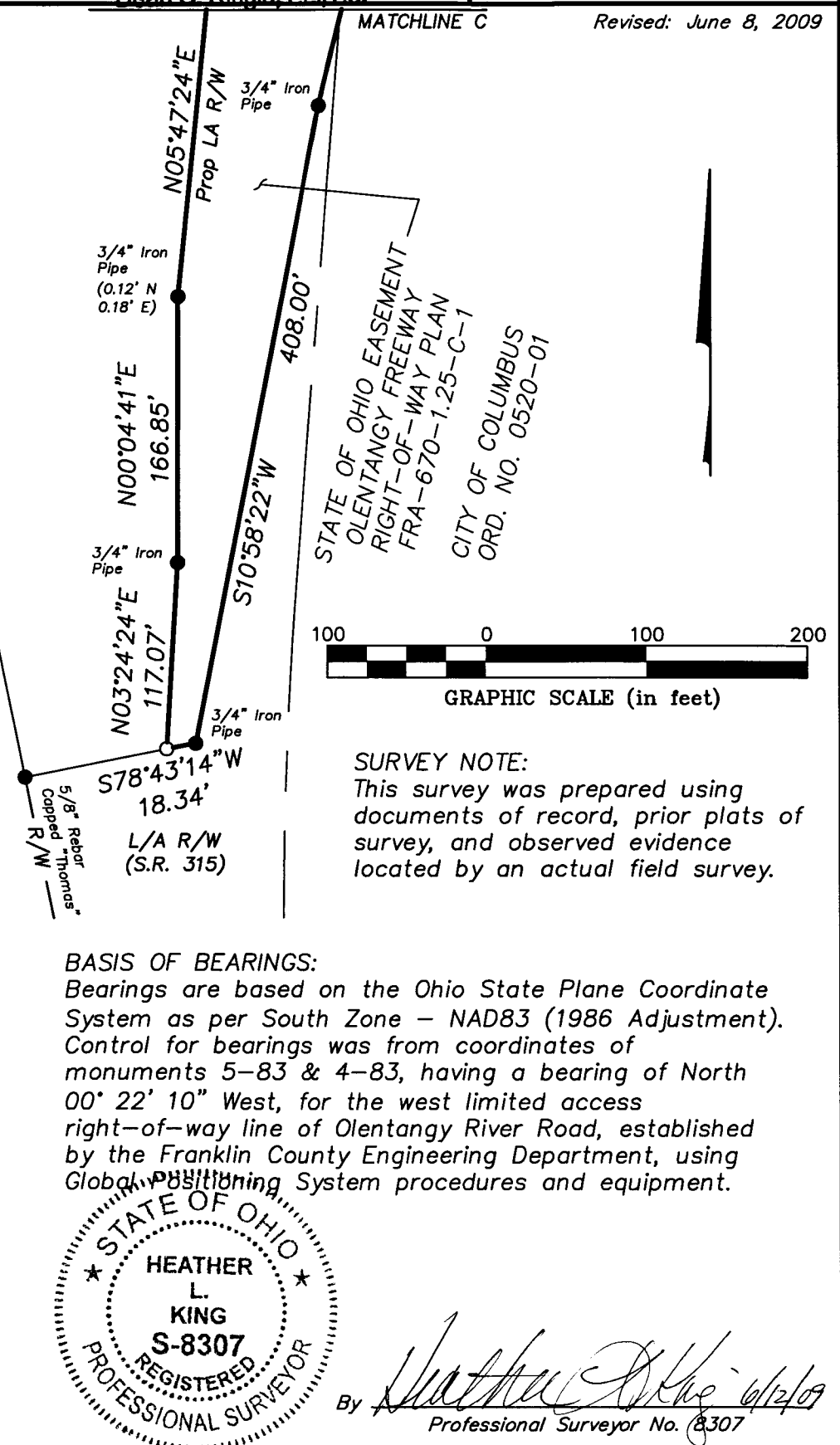
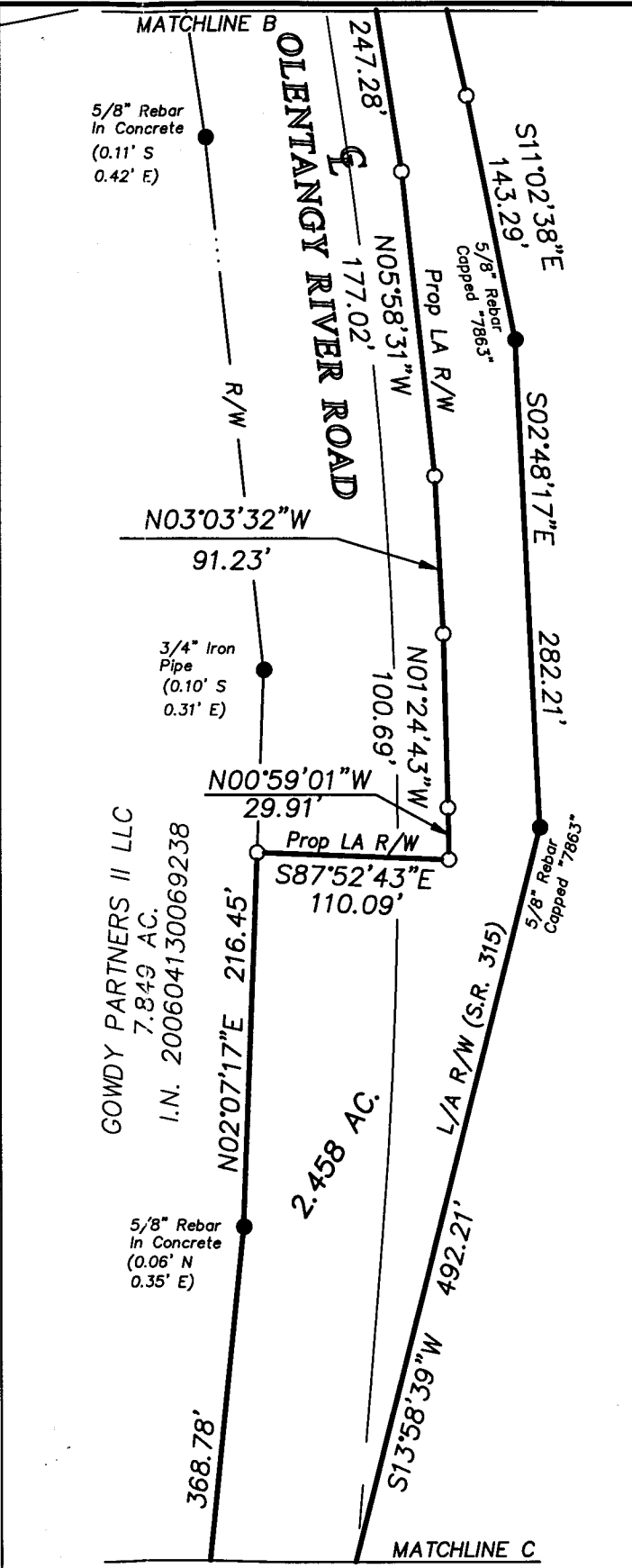
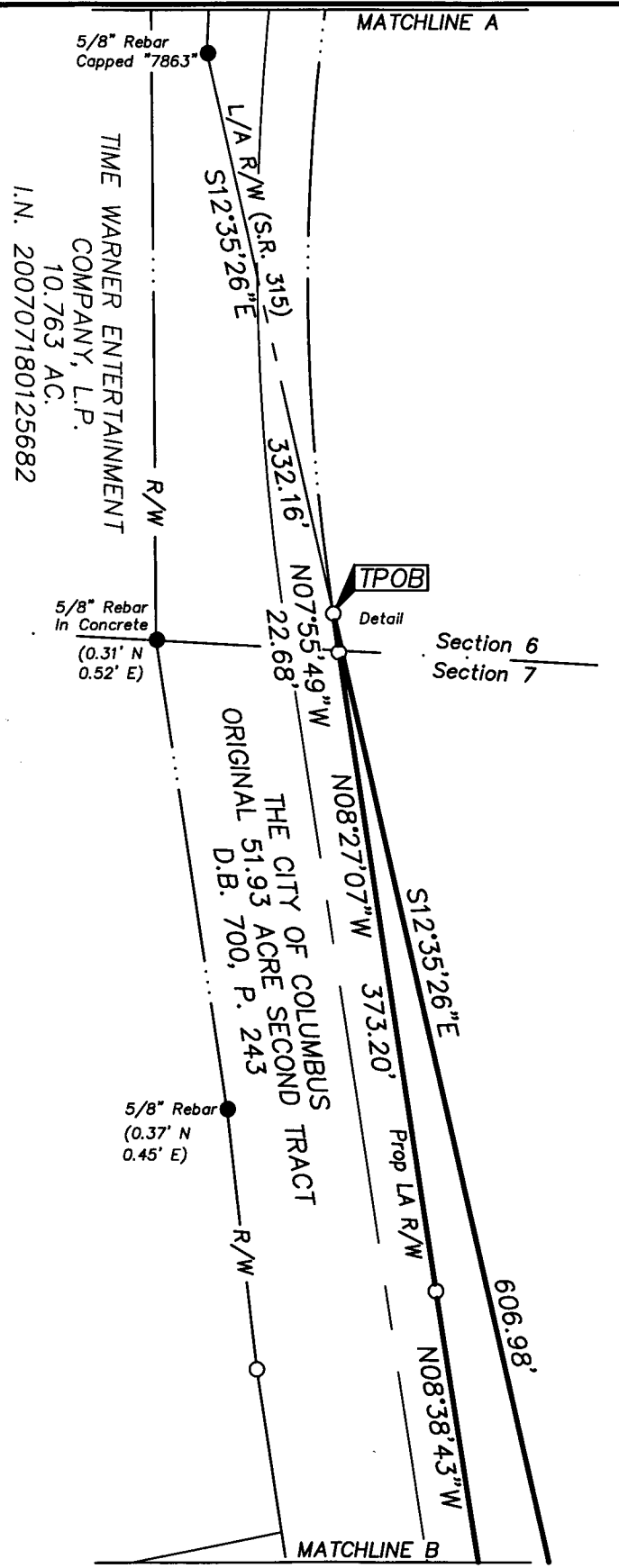
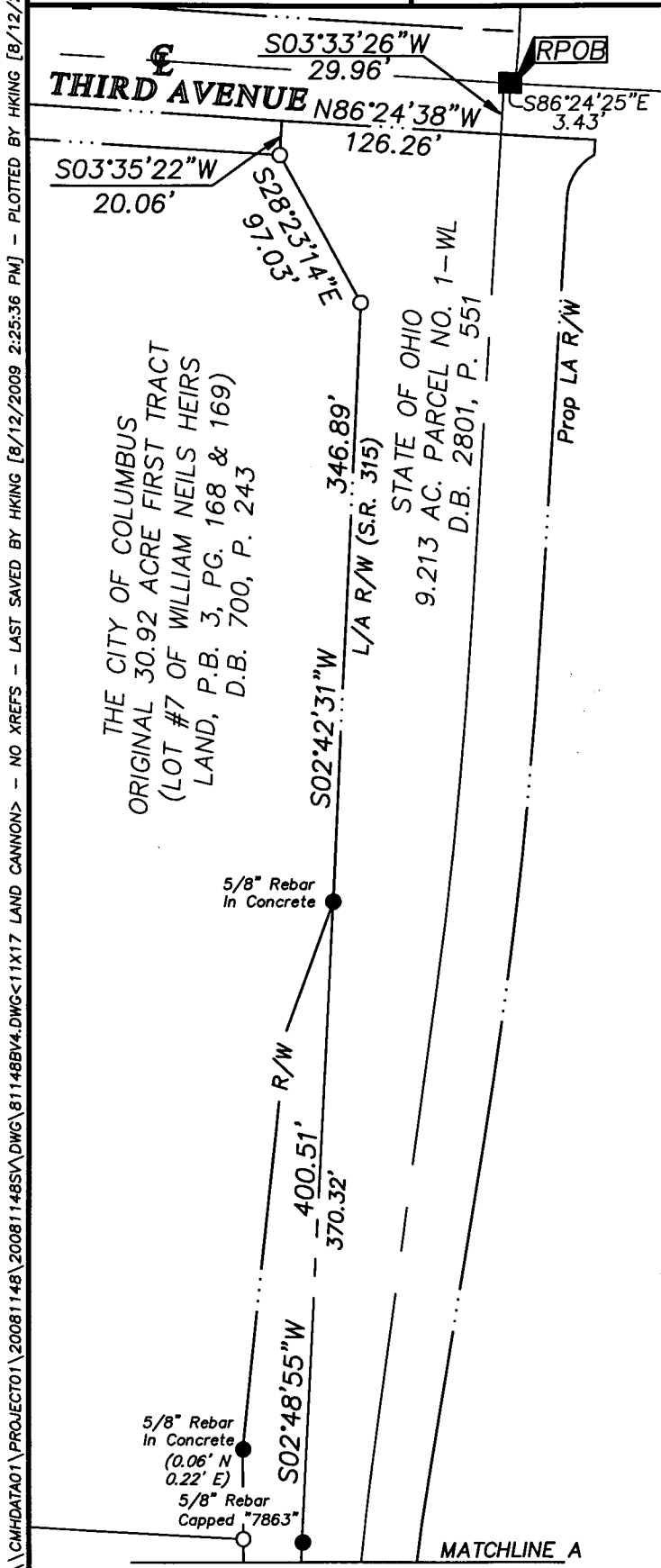
Franklin County Engineer
Dean C. Ringle, P.E., P.S.

Date: June 5, 2009

Scale: 1" = 100'

Job No: 2008-1148

Revised: June 8, 2009



SURVEY NOTE:
 This survey was prepared using documents of record, prior plats of survey, and observed evidence located by an actual field survey.

BASIS OF BEARINGS:
 Bearings are based on the Ohio State Plane Coordinate System as per South Zone - NAD83 (1986 Adjustment). Control for bearings was from coordinates of monuments 5-83 & 4-83, having a bearing of North 00° 22' 10" West, for the west limited access right-of-way line of Olentangy River Road, established by the Franklin County Engineering Department, using Global Positioning System procedures and equipment.



By *Heather L. King* 6/12/09
 Professional Surveyor No. 8307

\\CMHDATA01\PROJECT01\20081148\20081148S\DWG\81148B\4.DWG<11X17 LAND CANNON> - NO XREFS - LAST SAVED BY HIKING [8/12/2009 2:25:36 PM] - PLOTTED BY HIKING [8/12/2009 2:25:36 PM]