

21821

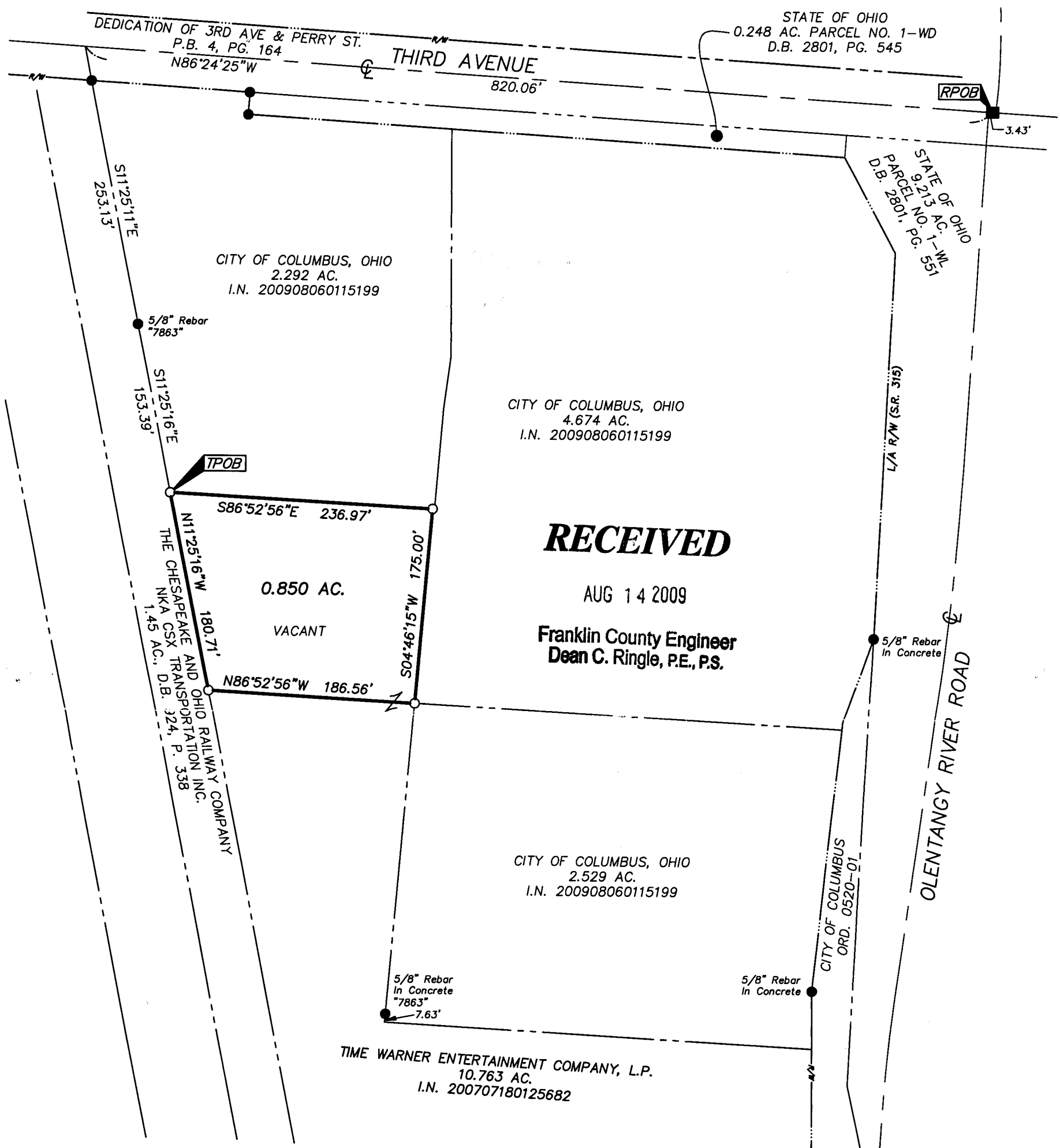
F 8-13

EMH&T
 Evans, Mechwart, Hambleton & Tilton, Inc.
 Engineers • Surveyors • Planners • Scientists
 5500 New Albany Road, Columbus, OH 43054
 Phone: 614.775.4500 Fax: 614.775.4800

SURVEY OF ACREAGE TRACT
SECTION 6, TOWNSHIP 5, RANGE 22
REFUGEE LANDS
CITY OF COLUMBUS, COUNTY OF FRANKLIN, STATE OF OHIO

| | |
|---------|------------------|
| Date: | January 16, 2009 |
| Scale: | 1" = 100' |
| Job No: | 2008-1148 |

Revised: August 13, 2009

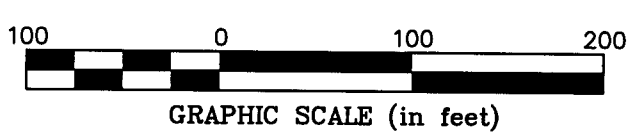


BASIS OF BEARINGS:
 Bearings are based on the Ohio State Plane Coordinate System as per South Zone - NAD83 (1986 Adjustment). Control for bearings was from coordinates of monuments 5-83 & 4-83, having a bearing of North 00° 22' 10" West, for the west limited access right-of-way line of Olentangy River Road, established by the Franklin County Engineering Department, using Global Positioning System procedures and equipment.

SURVEY NOTE:
 This survey was prepared using documents of record, prior plats of survey, and observed evidence located by an actual field survey.

FEMA NOTE:
 According to the Federal Emergency Management Agency's Flood Insurance Rate map (dated June 17, 2008), the subject parcels shown hereon lie within Zone "X" (areas of 0.2% annual chance flood; areas of 1% annual chance flood with average depths of less than 1 foot or with drainage areas less than 1 square mile; and areas protected by levees from 1% annual chance flood), Community Panel No. 39049C0307K.

- = MON. FND.
 - = 3/4" I.P. FND.
 - (UNLESS NOTED)
 - = I.P. SET
- I.P. Set are 13/16" I.D. iron pipe with cap inscribed EMHT INC



Heather L. King 8/13/09
 Professional Surveyor No. 8250

\\CMHDATA01\PROJECT01\20081148\20081148SV\DWG\B1148BV.DWG<11X17 PORTRAIT CANNON> - NO XREFS - LAST SAVED BY HKING [8/13/2009 1:27:40 PM] - PLOTTED BY HKING [8/13/2009 2:29:40 PM]