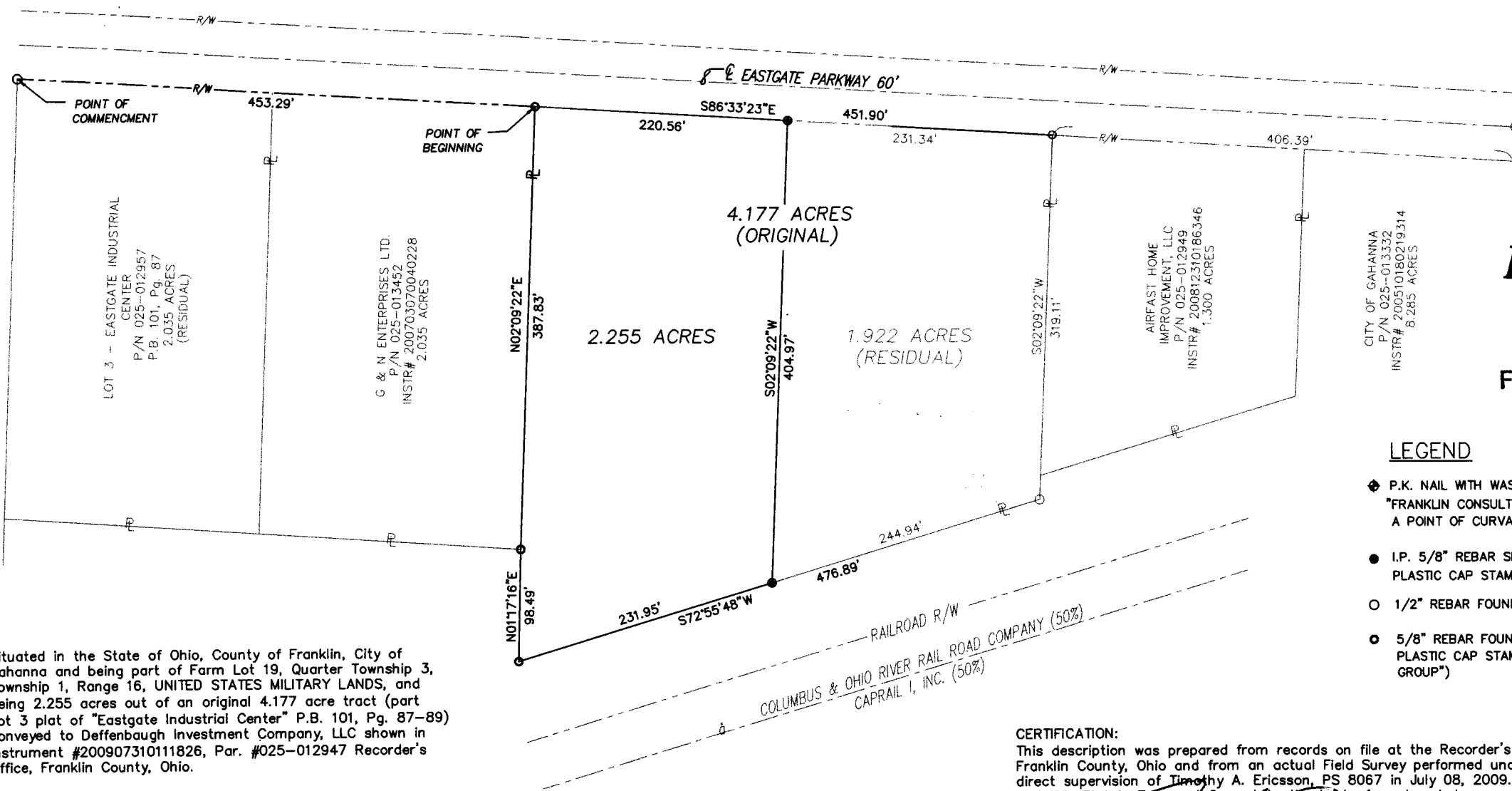


21816

J-8-C

EXHIBIT "A"

STANDARD LOT SPLIT
 BEING 2.255 ACRES OUT OF AN
 ORIGINAL 4.177 ACRE TRACT CONVEYED TO
 DEFFENBAUGH INVESTMENTS COMPANY, LLC
 INSTRUMENT No. 200907310111826
 PARCEL No. 025-012947



RECEIVED

AUG 14 2009

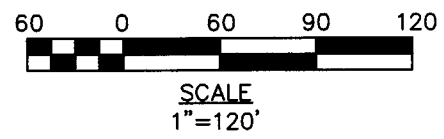
Franklin County Engineer
Dean C. Ringle, P.E., P.S.

LEGEND

- ◆ P.K. NAIL WITH WASHER STAMPED "FRANKLIN CONSULTANTS" AT THE A POINT OF CURVATURE.
- I.P. 5/8" REBAR SET (YELLOW PLASTIC CAP STAMPED 8067)
- 1/2" REBAR FOUND (NO CAP)
- ⊙ 5/8" REBAR FOUND (YELLOW PLASTIC CAP STAMPED "BRH GROUP")

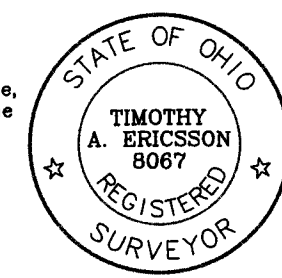
Situated in the State of Ohio, County of Franklin, City of Gahanna and being part of Farm Lot 19, Quarter Township 3, Township 1, Range 16, UNITED STATES MILITARY LANDS, and being 2.255 acres out of an original 4.177 acre tract (part Lot 3 plat of "Eastgate Industrial Center" P.B. 101, Pg. 87-89) conveyed to Deffenbaugh Investment Company, LLC shown in Instrument #200907310111826, Par. #025-012947 Recorder's Office, Franklin County, Ohio.

BASIS OF BEARING:
 Bearings are based on the south right-of-way Line of Eastgate Parkway being S86°33'23"E as delineated on the Plat of "EASTGATE INDUSTRIAL CENTER" shown in P.B. 101, Pg. 87-89, on file at the Recorder's Office, Franklin County, Ohio.



CERTIFICATION:
 This description was prepared from records on file at the Recorder's Office, Franklin County, Ohio and from an actual Field Survey performed under the direct supervision of Timothy A. Ericsson, PS 8067 in July 08, 2009, and this Plat is True and Correct to the best of my knowledge.

Timothy A. Ericsson
 Timothy A. Ericsson
 Registered Surveyor No. 8067
 08/14/09



(ORIGINAL) NOT VALID WITHOUT RAISED SEA