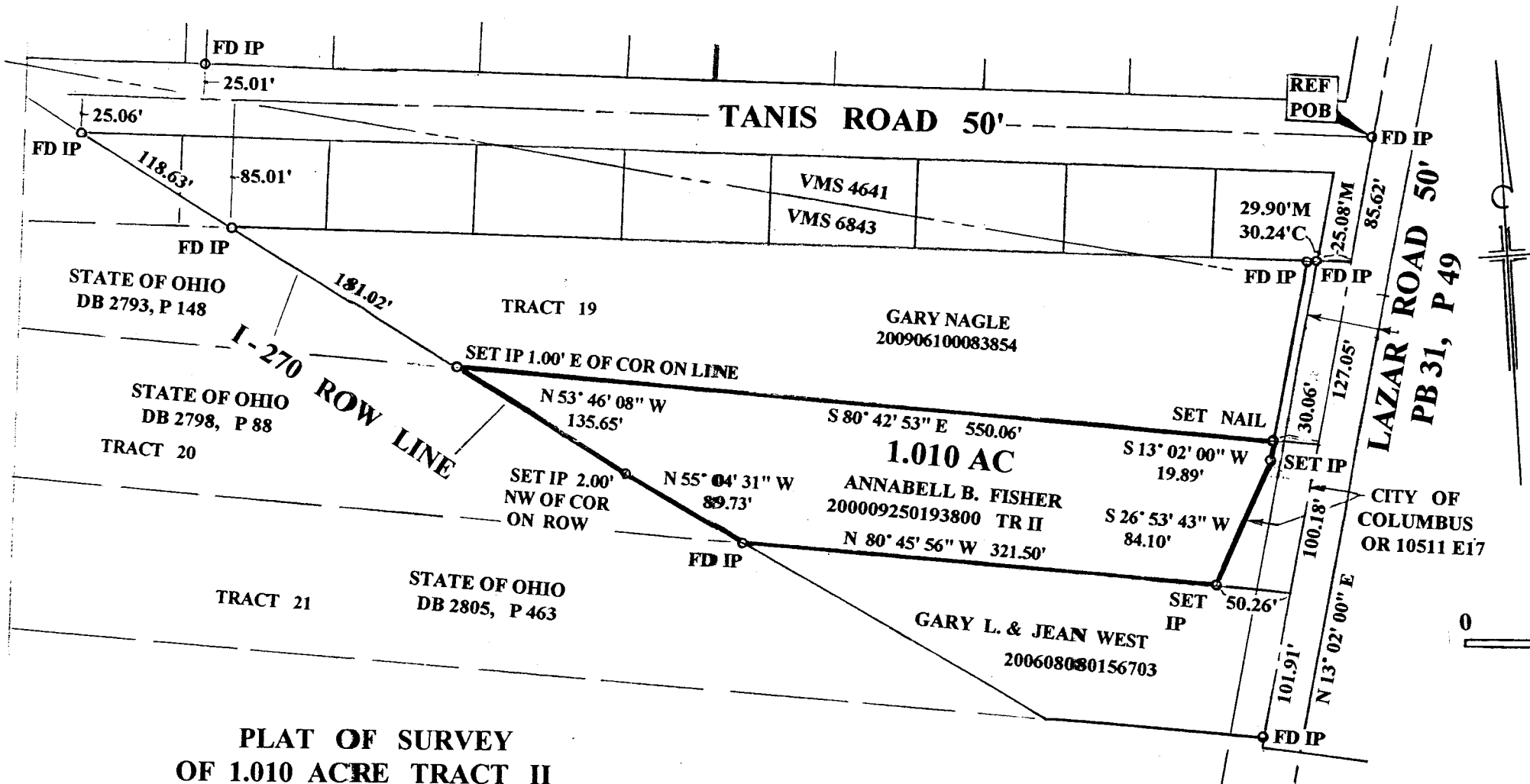


21815

G-8-A



RECEIVED

AUG 05 2009

Franklin County Engineer
Dean C. Ringle, P.E., P.S.

PLAT OF SURVEY
 OF 1.010 ACRE TRACT II
 CITY OF COLUMBUS, FRANKLIN COUNTY, OHIO
 VMS 6843
 OF RECORD IN INST. NO. 200009250193800
 FOR
 JOHN K. EVERETT, ATTY.
 JULY 2009 424-09

THE THOMAS ENGINEERING & SURVEYING CO.

Robert G. Watts
 ROBERT G. WATTS, RPLS #4138



BEARINGS ARE BASED ON THE BEARING OF N 13° 02' 00" E FOR THE CENTERLINE OF LAZAR ROAD AS SHOWN ON THE PLAT OF DEDICATION OF LAZAR ROAD OF RECORD IN PLAT BOOK 31, PAGE 49, RECORDERS OFFICE, FRANKLIN COUNTY, OHIO
 ALL SET IRON PINS ARE 5/8"X30" REBARS WITH YELLOW PLASTIC CAPS EMBOSSED "THOMAS ENGR & SURVEYING"