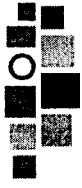


PROJ. NO: CO20060121

FILE NO: 16

DRAWN BY: MTL

CHKD BY: JMA



AMERICAN STRUCTUREPOINT INC.

2550 CORPORATE EXCHANGE DR, STE 300 COLUMBUS, OH 43231 TEL 614.901.2235 FAX 614.901.2236 www.structurepoint.com

EXHIBIT "B" PARCEL 27-WDV

0.389 ACRES RIGHT OF WAY

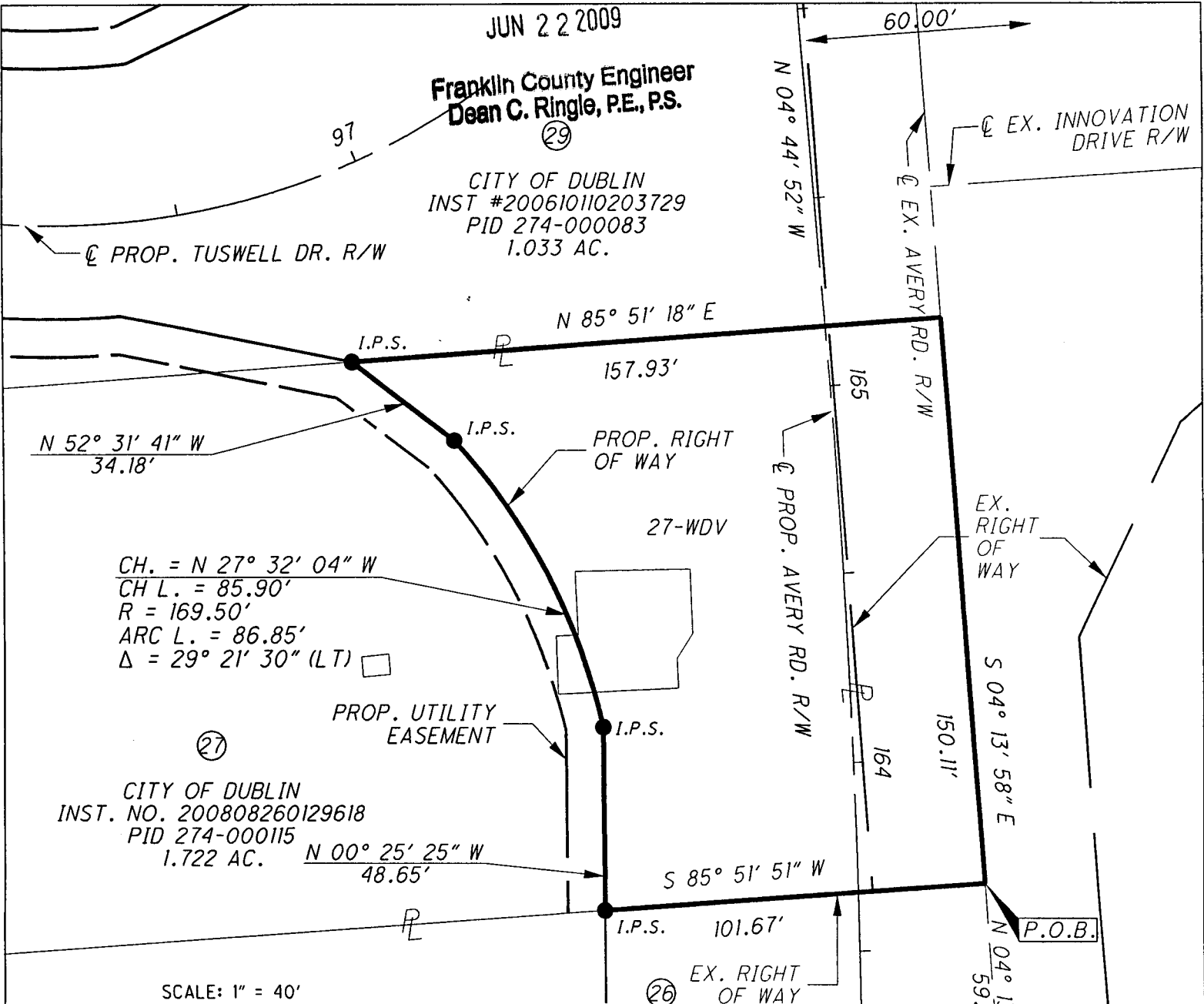
DUBLIN, OHIO

RECEIVED

JUN 22 2009

Franklin County Engineer Dean C. Ringle, P.E., P.S.

CITY OF DUBLIN INST #200610110203729 PID 274-000083 1.033 AC.



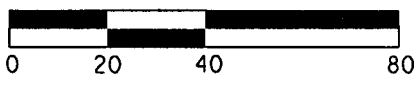
CH. = N 27° 32' 04" W  
CH L. = 85.90'  
R = 169.50'  
ARC L. = 86.85'  
Δ = 29° 21' 30" (LT)

CITY OF DUBLIN INST. NO. 200808260129618 PID 274-000115 1.722 AC.

FRAIJ PROPERTY, LLC INST # 200607200142585 PID 274-000048 0.550 AC.

FCGS NO. 7749

SCALE: 1" = 40'

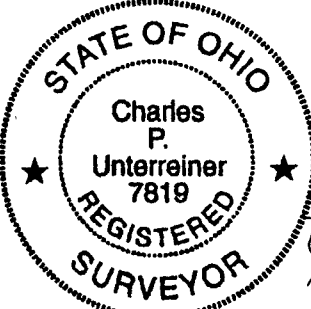


- = IRON PIN SET
  - = IRON PIN FOUND
  - ⊙ = IRON PIPE FOUND
  - Ⓜ = MONUMENT BOX FOUND
  - ⊗ = RAILROAD SPIKE FOUND
- I.P. SET ARE 3/4" I.D.  
IRON PIN 30" LONG WITH CAP INSCRIBED AMERICAN STRUCTUREPOINT, INC.

BASIS OF BEARING:

BEARINGS ARE BASED ON THE OHIO STATE PLANE COORDINATE SYSTEM, SOUTH ZONE, NAD 83 (86 ADJUSTMENT)

I HEREBY CERTIFY THAT: THIS DRAWING REPRESENTS THE RESULTS OF AN ACTUAL FIELD SURVEY OF THE PREMISES PERFORMED BY G.J. BERDING SURVEYING, INC. IN MAY 2006. THIS DRAWING IS CORRECT TO THE BEST OF MY KNOWLEDGE AND BELIEF.



*Charles P. Unterreiner*

CHARLES P. UNTERREINER, P.S. NO. 7819 AMERICAN STRUCTUREPOINT, INC.

1-9-2008 DATE

SITUATED IN THE STATE OF OHIO, COUNTY OF FRANKLIN, CITY OF DUBLIN AND BEING IN VIRGINIA MILITARY SURVEY NUMBER 3004