

VMS 6115

ROSEMARY C. McDONALD
9/7/77
1.5 ACRES
DB 3607, PG. 632

RECEIVED

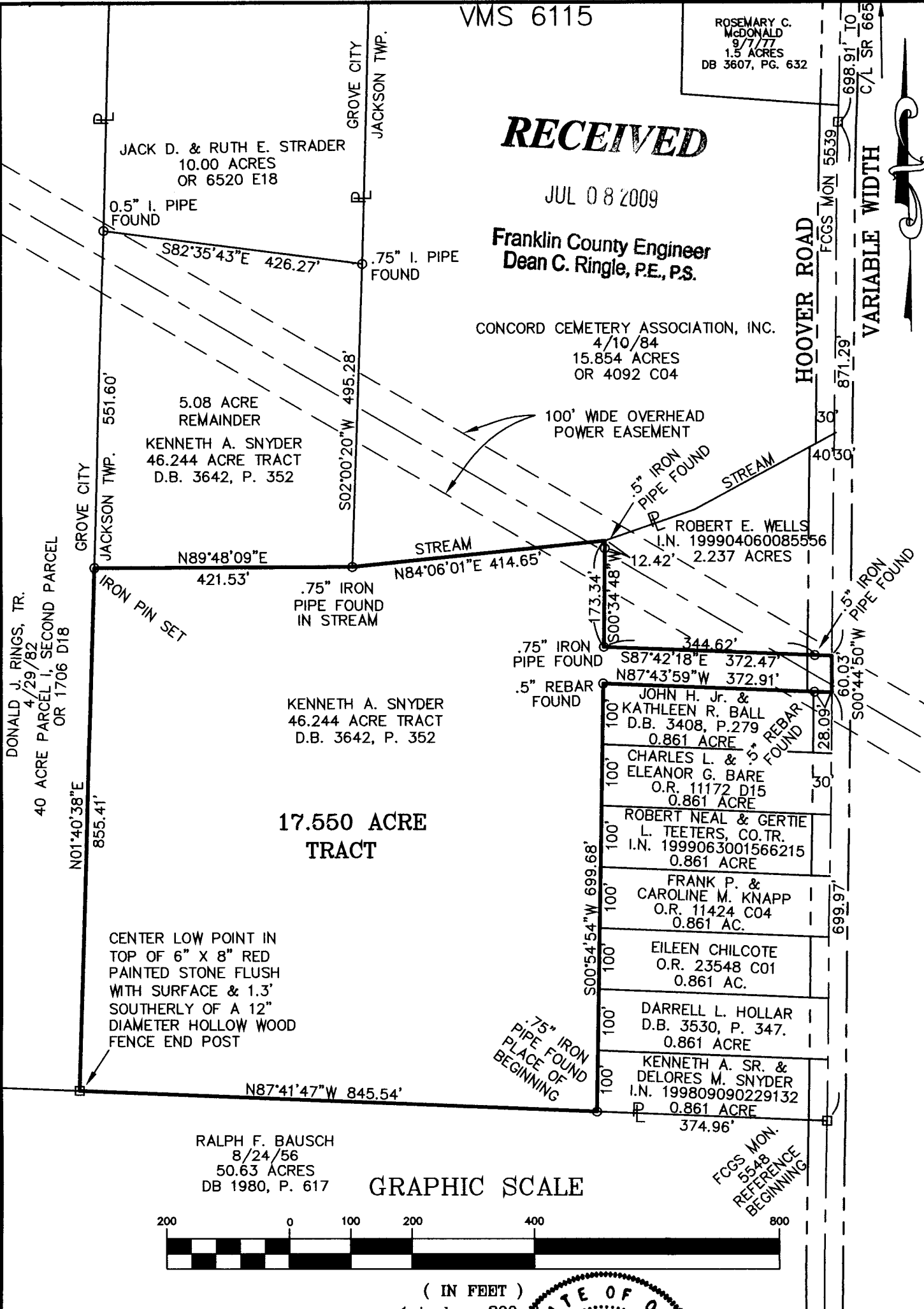
JUL 08 2009

Franklin County Engineer
Dean C. Ringle, P.E., P.S.

CONCORD CEMETERY ASSOCIATION, INC.
4/10/84
15.854 ACRES
OR 4092 C04

HOOVER ROAD
FCGS MON 5539

VARIABLE WIDTH
698.91' TO
C/L SR 665



17.550 ACRE TRACT

CENTER LOW POINT IN TOP OF 6" X 8" RED PAINTED STONE FLUSH WITH SURFACE & 1.3' SOUTHERLY OF A 12" DIAMETER HOLLOW WOOD FENCE END POST

GRAPHIC SCALE

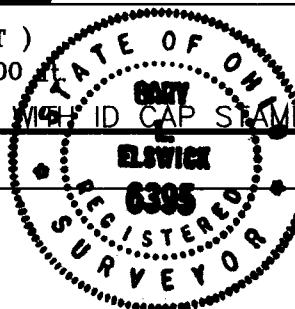


(IN FEET)
1 inch = 200'

IRON PINS SET ARE 5/8" X 30" REINFORCING ROD WITH ID CAP STAMPED "ELSWICK RS 6395"

SURVEY FOR: **KENNETH SNYDER**

PROJECT: **SURVEY OF
17.55 ACRE TRACT
Located In VMS 6115**



LOCATION: **VMS 6115, JACKSON TWP.**
COUNTY: **FRANKLIN**
STATE: **OHIO**
REVISIONS:

DATE: **7-10-00**

THIS PLAT REPRESENTS THE RESULTS OF A FIELD SURVEY MADE IN JULY, 2000. ALL MONUMENTS SHOWN EXIST AND MEASUREMENTS ARE CORRECT TO THE BEST OF MY KNOWLEDGE. BEARINGS ARE BASED ON THE WESTERLY LINE OF THE CONCORD CEMETERY 15.854 ACRE TRACT BEING S 2° 00' 20" WEST.

DRAWING NO. **OH-9-00**

SCALE: **1"=200'**

GARY L. ELSWICK REGISTERED SURVEYOR #6395

Sheet 1 of 1

SNYDER1755.DWG