

Note: Iron pins set are 30" X 1" O.D. with yellow plastic caps inscribed 6065.

City of Grove City
15.468 ACRE

4.039 ACRES

GATEWAY CAPITAL HOLDINGS LLC.
INST. NO. 199811090287669
PART OF ORIGINAL 36.892 AC.

GATEWAY AGA LLC,
5.144 Acre
INST. NO. 200801280013148

SANTA FE BAYFRONT VENTURE
16.79 ACRE
INSTRUMENT NO. 199908200213043

PARA SOUTHPARK, INC.
P.B. 71 PG. 31

N 06° 13' 26" E 323.58'

N 83° 46' 34" W 226.95

N 48° 38' 58" W 48.57'

GREENLAWN REALTY
1.316 ACRE
INST. NO. 200901060001478

RECEIVED

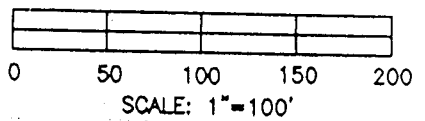
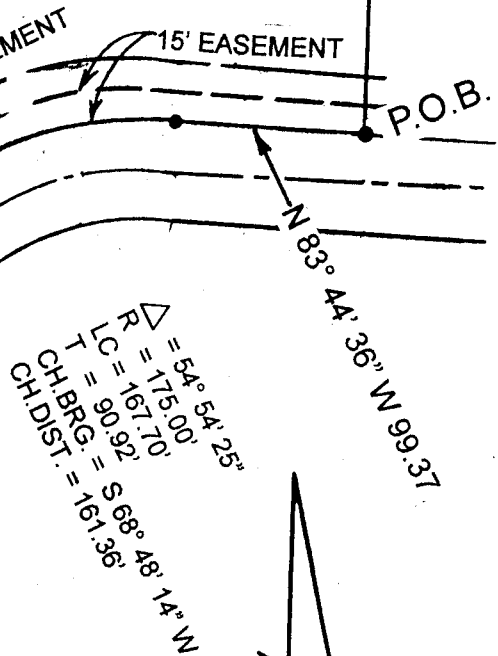
JUN 17 2009

Franklin County Engineer
Dean C. Ringle, P.E., P.S.

● IRON PIN (SET)

NOTE: IRON PINS (SET) ARE IN EXCELLENT CONDITION.

GATEWAY CIRCLE (50')
(P.B. 90, PG. 34 & 35.)



THE BASIS OF BEARINGS ARE THOSE BEARINGS EMPLOYED IN THE PLAT OF DEDICATION OF GATEWAY CIRCLE, P.B. 90 PGS. 34 & 45, BEING N 06 13' 26" E.

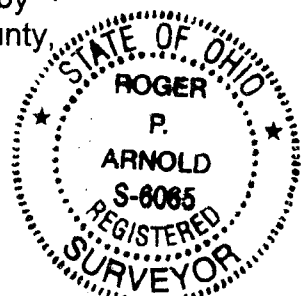
GATEWAY TO THE CITY

4.039 ACRE BOUNDARY SURVEY

EXHIBIT "A"

Situated in the State of Ohio, County of Franklin, and City of Grove City, being a 4.039 acre tract of land out of that original 36.892 acre tract of land conveyed to Gateway Capital Holdings, Limited Liability Company in the State of Ohio by Official Instrument No. 199811090287669, Records Office, Franklin County, Ohio.

ARNOLD SURVEY COMPANY
3911 BROADWAY STREET, GROVE CITY, OHIO 43123
TELEPHONE (614) 875-7684 FAX: (614) 875-9017



PREPARED BY

Roger P. Arnold
REGISTERED SURVEYOR NO. 6065

DATE 6/16/2009