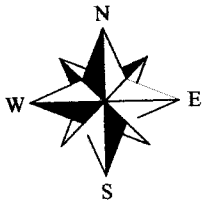


LIVINGSTON AVE.

PLAT OF SURVEY

3 PARCELS COMBINED, BEING OUT OF 1/2 SEC.'S 33 & 34, TWP. 5, RANGE 22, REFUGEE LANDS, CITY OF COLUMBUS, FRANKLIN COUNTY, OHIO



Old Centerline of Alum Creek Drive Vacated by Ord. #'s 1766-94, 2970-86 & 296-78

Bearings are based on S 05°00'00" E, as given for the centerline of old Alum Creek Drive as described in O.R. 28095, Pg. 109, of record in the Franklin County Recorder's Office, Franklin County, Ohio.



SCALE 1" = 60'

ALUM CREEK DRIVE (R/W VARIES)

0.150 ACRES

0.178 ACRES

1.666 ACRES (TOTAL, BY SURVEY)

LOMAX REALTY LLC
1.338 AC., TRACT "I"
O.R. 28095, PG. 109

1.338 ACRES
RECEIVED

JUL 02 2009

Franklin County Engineer
Dean C Ringler, P.E., P.S.

REFERENCES

Auditors Tax Map
Deeds/Plats as noted on Survey
Monuments as shown on Survey
Road Plans
Surveys of Record

① LOMAX REALTY LLC
0.152 AC., TRACT "II"
O.R. 28095, PG. 109
AUDITORS PARCEL #010-4206

② LOMAX REALTY LLC
0.150 AC., TRACT "III"
O.R. 28095, PG. 109
AUDITORS PARCEL #010-112133

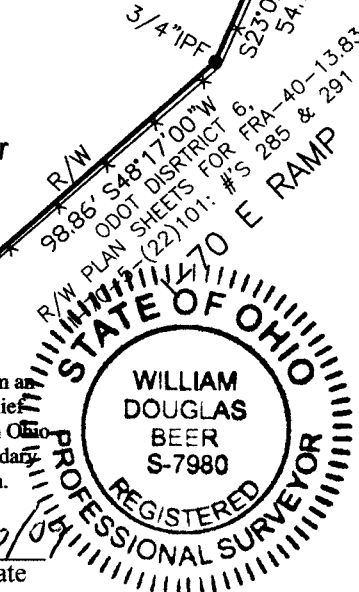
LEGEND:

- ⊙ = 5/8" - REBAR SET (w/ "S-7980" CAP)
- ◇ = MAG NAIL SET
- ◆ = MAG NAIL FOUND
- = IRON PIN FOUND (As Noted)
- ▲ = RAILROAD SPIKE FOUND

BENCHMARK LAND SURVEYING
13375 NATIONAL ROAD SW UNIT D
REYNOLDSBURG, OH. 43068
(740) 919-4059 ~ Office
(740) 919-4106 ~ Fax
www.benchmarkcompanies.org

I hereby certify that this boundary survey was prepared from an actual field survey and to the best of our knowledge and belief is correct and that this plat was prepared in accordance with Ohio Administrative Code Chapter 4733-37 "Standards for Boundary Surveys". All monumentation is found or to be set as shown.

William D. Beer
Registered Professional Surveyor No. 7980



LIMITED ACCESS
RIGHT-OF-WAY

1-70 E RAMP
LIMITED ACCESS

3/4" IPF
R/W PLAN ODOT DISTRICT 6
SHEETS (22) 101: #S 285 & 291
FOR FRA-40-13-83

AUDITORS PARCEL
#010-016649

ANCHOR GOVERNMENT PROPERTIES I, LLC
3.465 AC.

I.N. 200701030001737

S85°05'00"E 220.73'

AUDITORS PARCEL
#010-100714

N85°05'00"W 17.81'

N30°58'35"W 68.07'

N30°27'00"W 68.95'

125.63' N77°56'00"W

98.86' S48°17'00"W

54.71'

S23°20'20"E 54.71'

3/4" IPF

148.29'

S06°08'26"E 148.29'

3/4" IPF

182.58'

N04°41'35"W 182.58'

R/W (8115')

N04°40'11"W 476.67'

P.O.C.

902.89'

M.00.00.50S

T.P.O.B.

S05°00'00"W 37.61'

S85°04'18"E 88.54'

R/W (8115')

N04°41'35"W (10143')

N04°41'35"W (10143')

N57°57'61"

57.80'

3/4" IPF

182.58'

N04°40'11"W 476.67'

P.O.C.

902.89'

M.00.00.50S

T.P.O.B.

S05°00'00"W 37.61'

S85°04'18"E 88.54'

R/W (8115')

N04°41'35"W (10143')

N04°41'35"W (10143')

N57°57'61"

57.80'

3/4" IPF

148.29'

S06°08'26"E 148.29'

3/4" IPF

182.58'

N04°40'11"W 476.67'

P.O.C.

902.89'

M.00.00.50S

T.P.O.B.

S05°00'00"W 37.61'

S85°04'18"E 88.54'

R/W (8115')

N04°41'35"W (10143')

N04°41'35"W (10143')

N57°57'61"

57.80'

3/4" IPF

148.29'

S06°08'26"E 148.29'

3/4" IPF

182.58'

N04°40'11"W 476.67'

P.O.C.

902.89'

M.00.00.50S

T.P.O.B.

S05°00'00"W 37.61'

S85°04'18"E 88.54'

R/W (8115')

N04°41'35"W (10143')

N04°41'35"W (10143')

N57°57'61"

57.80'

3/4" IPF

148.29'

S06°08'26"E 148.29'

3/4" IPF

182.58'

N04°40'11"W 476.67'

P.O.C.

902.89'

M.00.00.50S

T.P.O.B.

S05°00'00"W 37.61'

S85°04'18"E 88.54'

R/W (8115')

N04°41'35"W (10143')

N04°41'35"W (10143')

N57°57'61"

57.80'

3/4" IPF

148.29'

S06°08'26"E 148.29'

3/4" IPF

182.58'

N04°40'11"W 476.67'

P.O.C.

902.89'

M.00.00.50S

T.P.O.B.

S05°00'00"W 37.61'

S85°04'18"E 88.54'

R/W (8115')

N04°41'35"W (10143')

N04°41'35"W (10143')

N57°57'61"

57.80'

3/4" IPF

148.29'

S06°08'26"E 148.29'

3/4" IPF

182.58'

N04°40'11"W 476.67'

P.O.C.

902.89'

M.00.00.50S

T.P.O.B.

S05°00'00"W 37.61'

S85°04'18"E 88.54'

R/W (8115')

N04°41'35"W (10143')

N04°41'35"W (10143')

N57°57'61"

57.80'

3/4" IPF

148.29'

S06°08'26"E 148.29'

3/4" IPF

182.58'

N04°40'11"W 476.67'

P.O.C.

902.89'

M.00.00.50S

T.P.O.B.

S05°00'00"W 37.61'

S85°04'18"E 88.54'

R/W (8115')

N04°41'35"W (10143')

N04°41'35"W (10143')

N57°57'61"

57.80'

3/4" IPF

148.29'

S06°08'26"E 148.29'

3/4" IPF

182.58'

N04°40'11"W 476.67'

P.O.C.

902.89'

M.00.00.50S

T.P.O.B.

S05°00'00"W 37.61'

S85°04'18"E 88.54'

R/W (8115')

N04°41'35"W (10143')

N04°41'35"W (10143')

N57°57'61"

57.80'

3/4" IPF

148.29'

S06°08'26"E 148.29'

3/4" IPF

182.58'

N04°40'11"W 476.67'

P.O.C.

902.89'

M.00.00.50S

T.P.O.B.

S05°00'00"W 37.61'

S85°04'18"E 88.54'

R/W (8115')

N04°41'35"W (10143')

N04°41'35"W (10143')

N57°57'61"

57.80'

3/4" IPF

148.29'

S06°08'26"E 148.29'

3/4" IPF

182.58'

N04°40'11"W 476.67'

P.O.C.

902.89'

M.00.00.50S

T.P.O.B.

S05°00'00"W 37.61'

S85°04'18"E 88.54'

R/W (8115')

N04°41'35"W (10143')

N04°41'35"W (10143')

N57°57'61"

57.80'

3/4" IPF

148.29'

S06°08'26"E 148.29'

3/4" IPF

182.58'

N04°40'11"W 476.67'

P.O.C.

902.89'

M.00.00.50S

T.P.O.B.

S05°00'00"W 37.61'

S85°04'18"E 88.54'

R/W (8115')

N04°41'35"W (10143')

N04°41'35"W (10143')

N57°57'61"

57.80'

3/4" IPF

148.29'

S06°08'26"E 148.29'

3/4" IPF

182.58'

N04°40'11"W 476.67'

P.O.C.

902.89'

M.00.00.50S

T.P.O.B.

S05°00'00"W 37.61'

S85°04'18"E 88.54'

R/W (8115')

N04°41'35"W (10143')

N04°41'35"W (10143')

N57°57'61"

57.80'

3/4" IPF

148.29'

S06°08'26"E 148.29'

3/4" IPF

182.58'

N04°40'11"W 476.67'

P.O.C.

902.89'

M.00.00.50S