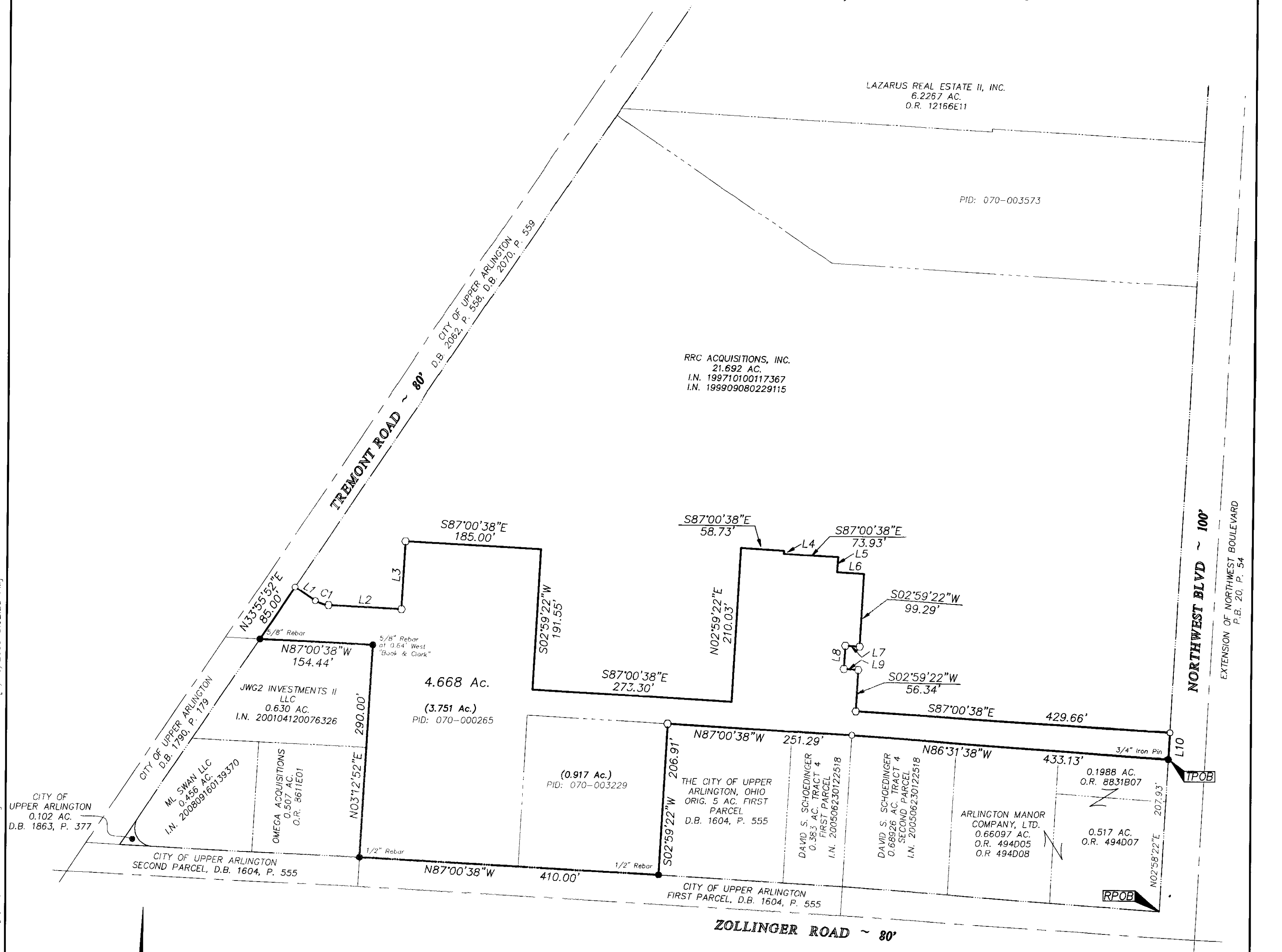


# SURVEY OF ACREAGE PARCEL

## QUARTER TOWNSHIP 4, TOWNSHIP 1, RANGE 19

### UNITED STATES MILITARY LANDS

#### CITY OF UPPER ARLINGTON, COUNTY OF FRANKLIN, STATE OF OHIO

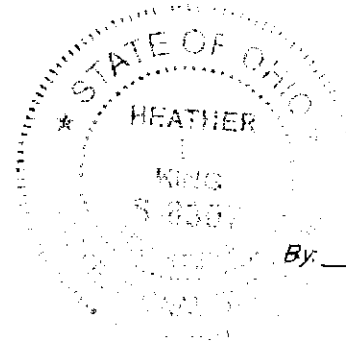


LINE	BEARING	DISTANCE
L1	S56°04'08"E	33.43'
L2	S87°00'38"E	100.04'
L3	N02°59'22"E	92.90'
L4	S02°59'22"W	4.30'
L5	S02°59'22"W	20.42'
L6	S87°00'38"E	36.68'
L7	N87°00'38"W	19.67'
L8	S02°59'22"W	32.00'
L9	S87°00'38"E	19.67'
L10	S02°58'22"W	36.51'

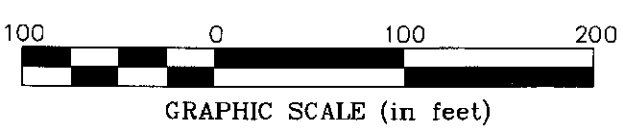
CURVE	DELTA	RADIUS	ARC	CH BRG	CH
C1	30°56'30"	35.00'	18.90'	S71°32'23"E	18.67'

**RECEIVED**

JUN 22 2009  
Franklin County Engineer  
Dean C. Ringle, P.E., P.S.



By: *Heather S. Ringle* 6/19/09  
Professional Surveyor No. 8307



- = STONE FND.
  - = MON. FND.
  - = I.P. FND.
  - = I.P. SET
  - = MAG. NAIL FND.
  - = MAG. NAIL SET
  - ▲ = R.R. SPK. FND.
  - △ = R.R. SPK. SET
  - ◆ = P.K. NAIL FND.
- I.P. Set are 13/16" I.D. iron pipe with cap inscribed EMHT INC

**BASIS OF BEARINGS:**  
The Bearings shown hereon are based on the Ohio State Plane Coordinate System South Zone as per NAD83 (1986 Adjustment). Control for bearings was from coordinates of monuments FCGS 6666 and 6667, having a bearing of South 00° 00' 00" East, established by the Franklin County Engineering Department, using Global Positioning System procedures and equipment.

<b>EMHT</b> Evans, Mechwart, Hambleton & Tilton, Inc. Engineers • Surveyors • Planners • Scientists 5500 New Albany Road, Columbus, OH 43254 Phone: 614.775.4500 Fax: 614.775.4800	Date: June 9, 2009	
	Scale: 1" = 100'	
	Job No: 2008-1620	
	Sheet: 1 of 1	
<b>REVISIONS</b>		
MARK	DATE	DESCRIPTION
HLK	6/17/09	Revisions per county comments

