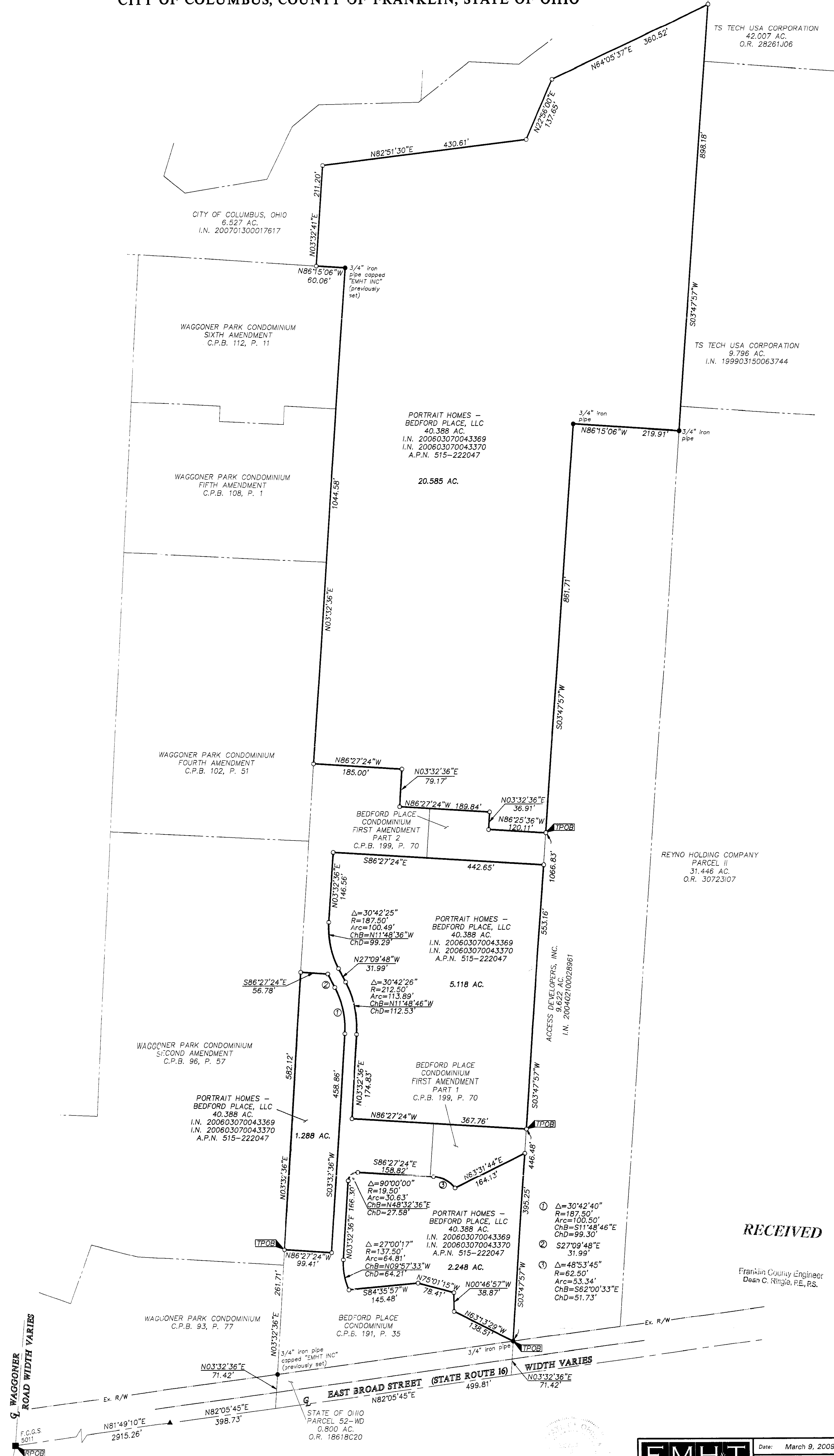
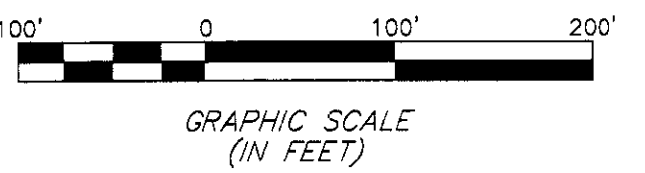


**SURVEY OF ACREAGE PARCELS**  
**QUARTER TOWNSHIP 4, TOWNSHIP 1, RANGE 16**  
**UNITED STATES MILITARY LANDS**  
**CITY OF COLUMBUS, COUNTY OF FRANKLIN, STATE OF OHIO**



\\CAMHDATA1\SURVEY\PROJECT\20090325\DWG\90325REV\DWG\24436.PORTRAIT> - NO XREFS - LAST SAVED BY: BAXTER [5/9/2009 10:33:36 AM] - PLOTTED BY: BAXTER [5/9/2009 10:33:11 AM]

- = STONE FND.
  - = MON. FND.
  - = I.P. FND.
  - = I.P. SET
  - = MAG. NAIL FND.
  - = MAG. NAIL SET
  - ▲ = R.R. SPK. FND.
  - △ = R.R. SPK. SET
  - = P.K. NAIL FND.
  - = P.K. NAIL SET
- I.P. Set are 13/16" I.D. iron pipe with cap inscribed EMHT INC



**BASIS OF BEARINGS:** Bearings are based on North 82° 05' 45" East for a portion of the centerline of East Broad Street (State Route 16). Control for bearings was derived from the Ohio State Plane Coordinate System, NAD83 (1986 adjustment) coordinates of monuments Frank 4B & Frank 14B, as established by the Franklin County Engineering Department using Global Positioning System procedures and equipment.

By: \_\_\_\_\_  
Professional Surveyor No. 8250



|  |      |                     |
|--|------|---------------------|
| <b>EMHT</b><br>Evans, Mechwart, Hambleton & Tilton, Inc.<br>Engineers • Surveyors • Planners • Scientists<br>5830 New Albany Road, Columbus, OH 43234<br>Phone: 614.775.4800 Fax: 614.775.4800 |      | Date: March 9, 2009 |
|  |      | Scale: 1" = 100'    |
| Job No: 2009-0325  |      | Sheet: 1 of 1       |
| <b>REVISIONS</b>   |      |                     |
| MARK   | DATE | DESCRIPTION         |
|  |      |                     |
|  |      |                     |

**RECEIVED**

Franklin County Engineer  
Dean C. Ringle, PE, FS.