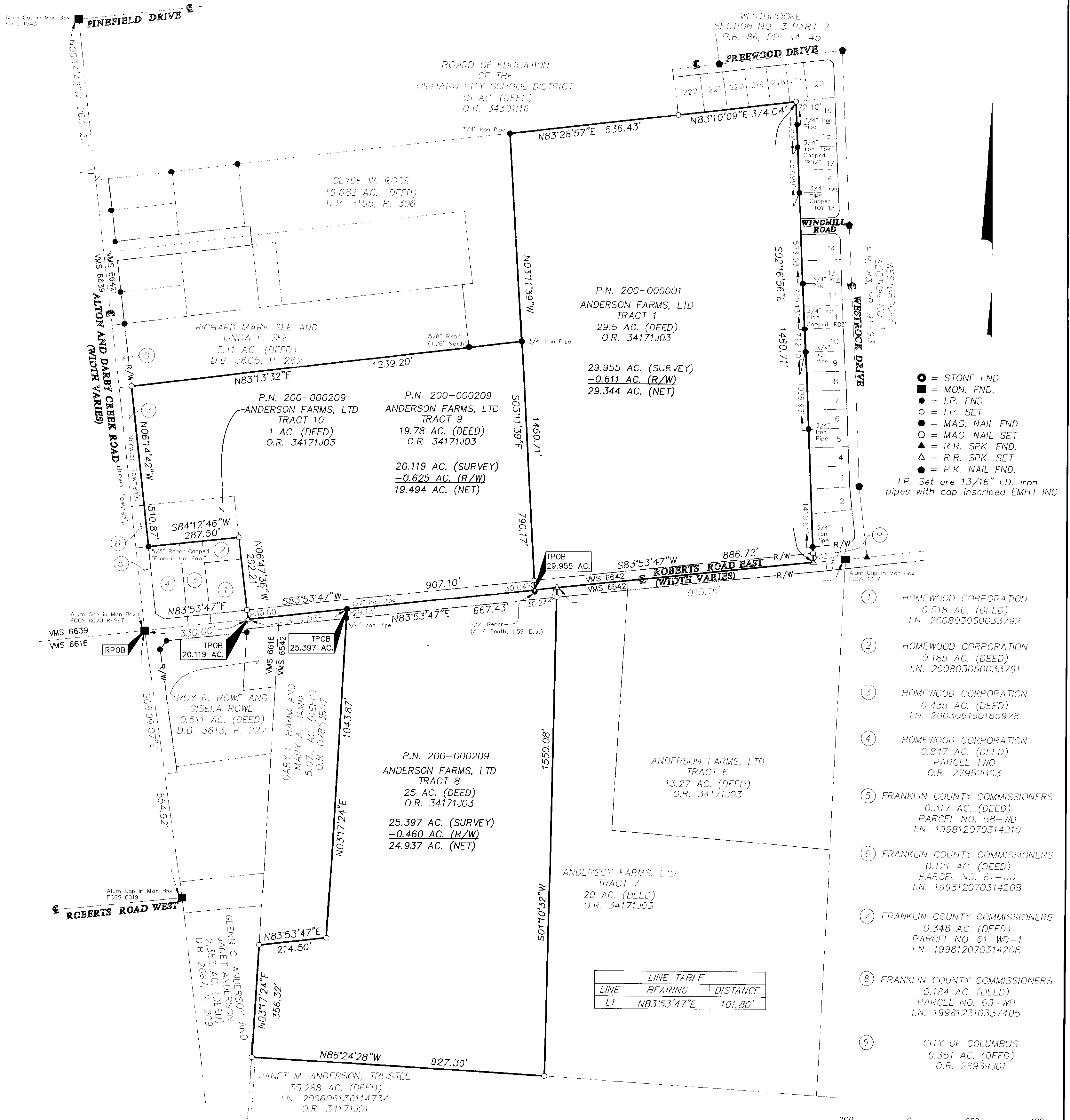


SURVEY OF ACREAGE PARCEL

VIRGINIA MILITARY SURVEYS 6542 AND 6642

TOWNSHIP OF NORWICH, COUNTY OF FRANKLIN, STATE OF OHIO



- = STONE FND.
 - = MON. FND.
 - = I.P. FND.
 - = I.P. SET
 - = MAG. NAIL FND.
 - = MAG. NAIL SET
 - ▲ = R.R. SPK. FND.
 - △ = R.R. SPK. SET
 - ◆ = P.K. NAIL FND.
- I.P. Set are 13/16" I.D. iron pipes with cap inscribed EMHT INC

- 1 HOMEWOOD CORPORATION
0.518 AC. (DEED)
I.N. 200803050033792
- 2 HOMEWOOD CORPORATION
0.185 AC. (DEED)
I.N. 200803050033791
- 3 HOMEWOOD CORPORATION
0.435 AC. (DEED)
I.N. 200306190185928
- 4 HOMEWOOD CORPORATION
0.847 AC. (DEED)
PARCEL TWO
O.R. 27952B03
- 5 FRANKLIN COUNTY COMMISSIONERS
0.317 AC. (DEED)
PARCEL NO. 58-WD
I.N. 199812070314210
- 6 FRANKLIN COUNTY COMMISSIONERS
0.121 AC. (DEED)
PARCEL NO. 61-WD
I.N. 199812070314208
- 7 FRANKLIN COUNTY COMMISSIONERS
0.348 AC. (DEED)
PARCEL NO. 61-WD-1
I.N. 199812070314208
- 8 FRANKLIN COUNTY COMMISSIONERS
0.184 AC. (DEED)
PARCEL NO. 63-WD
I.N. 199812310337405
- 9 CITY OF COLUMBUS
0.351 AC. (DEED)
O.R. 26939J01

LINE TABLE		
LINE	BEARING	DISTANCE
L1	N83°53'47"E	101.80'

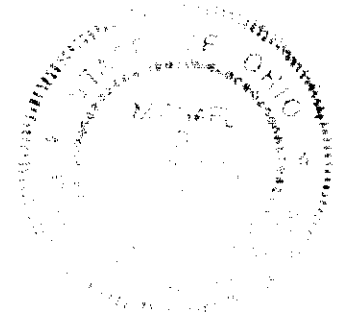


SURVEY NOTE:
This survey was prepared using documents of record, prior plats of survey, and observed evidence located by an actual field survey.

Occupation in general fits survey.

Reference: Centerline Survey Plat Alton & Darby Creek RD and Roberts Rd. East, Franklin County Engineers, 10/7/2004, 11/7/2007. Other references as shown.

BASIS OF BEARINGS:
The Bearings shown hereon are based on the Ohio State Plane Coordinate System South Zone as per NAD83 (1986 Adjustment). Control for bearings was from coordinates of monuments FCGS 1543 and FCGS 0020 RESET, having a bearing of North 06° 14' 42" West, established by the Franklin County Engineering Department, using Global Positioning System procedures and equipment.



By *Michael O. Wanchick* 7/6/09
Michael O. Wanchick
Professional Surveyor No. 7854

<p>Evans, Mechwart, Hambleton & Tillon, Inc. Engineers • Surveyors • Planners • Scientists 5500 New Albany Road, Columbus, OH 43254 Phone: 614-775-4200 Fax: 614-775-4800</p>	Date: June 27, 2008	
	Scale: 1" = 200'	
	Job No: 2008-1041	
	Sheet: 1 of 1	
REVISIONS		
MARK	DATE	DESCRIPTION
JRM	4/1/09	Combined 19.249 and 0.869 acre tracts