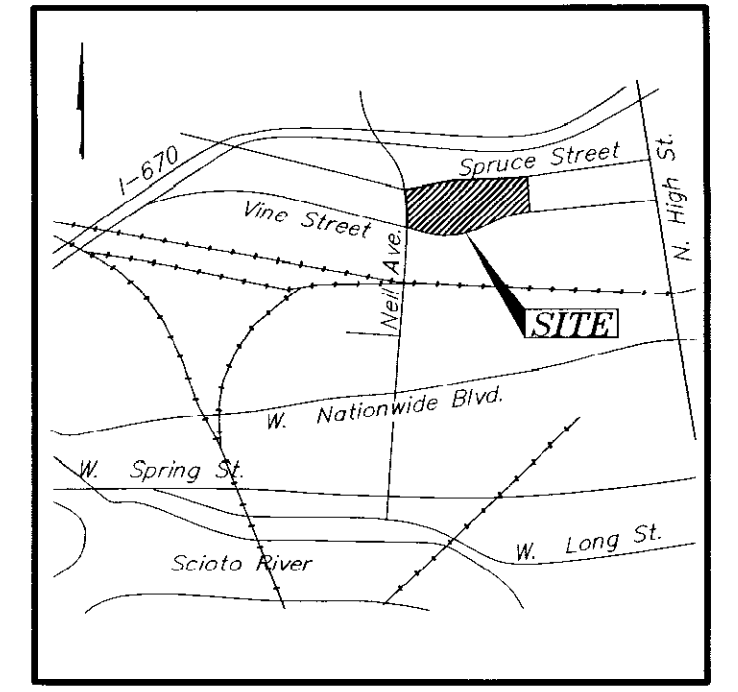


SURVEY OF ACREAGE TRACT

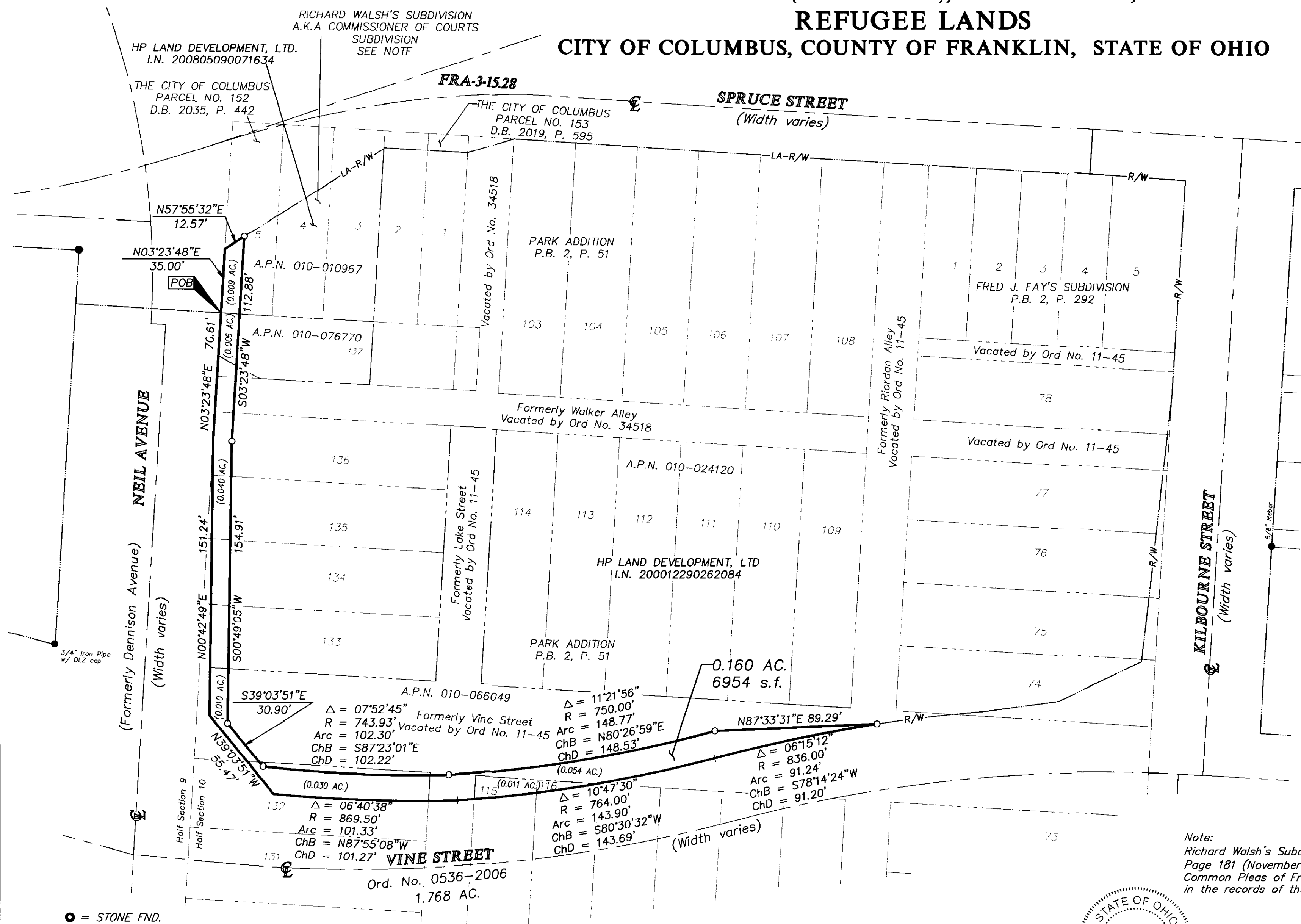
HALF SECTION 10 (SECTION 8), TOWNSHIP 5, RANGE 22

REFUGEE LANDS

CITY OF COLUMBUS, COUNTY OF FRANKLIN, STATE OF OHIO



LOCATION MAP
NOT TO SCALE



RECEIVED

Franklin County Engineer
Dean C. Ringle, P.E., P.S.

Note:
Richard Walsh's Subdivision was created in Complete Record 62, Page 181 (November 16, 1877) of the records of the Court of Common Pleas of Franklin County and is not a recorded Plat in the records of the Recorders Office, Franklin County, Ohio.



4/27/09

By: Professional Surveyor No. 8250

- = STONE FND.
 - = MON. FND.
 - = I.P. FND.
 - = I.P. TO BE SET AFTER CONSTRUCTION
 - = MAG. NAIL FND.
 - = MAG. NAIL SET
 - ▲ = R.R. SPK. FND.
 - △ = R.R. SPK. SET
 - = P.K. NAIL FND.
- I.P. Set are 13/16" I.D. iron pipe with cap inscribed EMHT INC

SURVEY NOTE:
This survey was prepared using documents of record, prior plats of survey, and observed evidence located by an actual field survey.

BASIS OF BEARINGS: The bearings shown hereon are based on the same meridian as the bearings shown on the subdivision plat entitled "Huntington Park" of record in Plat Book 112, Pages 24 and 25, Recorder's Office, Franklin County Ohio. On said plat of record, the centerline of Huntington Park Lane has a bearing of North 03°05'07" East.



EMHT		Date: April 21, 2009
Evans, Mechwart, Hambleton & Tilton, Inc. Engineers • Surveyors • Planners • Scientists 3500 New Albany Road, Columbus, OH 43054 Phone: 614.775.4300 Fax: 614.775.4800		Scale: 1" = 40'
Job No: 2007-1248		Sheet: 1 of 1
REVISIONS		
MARK	DATE	DESCRIPTION

\\CMHDATA01\PROJECT01\20071248\20071248SV.DWG 7/12/2009 9:15:53 AM - NO XREFS - LAST SAVED BY SGEIGER [4/27/2009 9:16:37 AM] - PLOTTED BY SGEIGER [4/27/2009 9:16:37 AM]