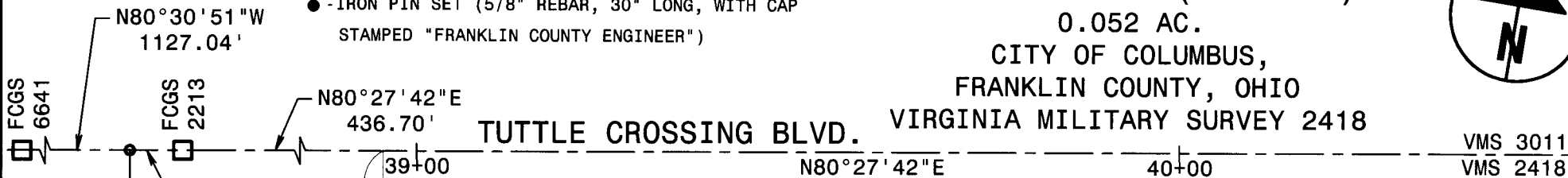
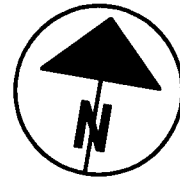


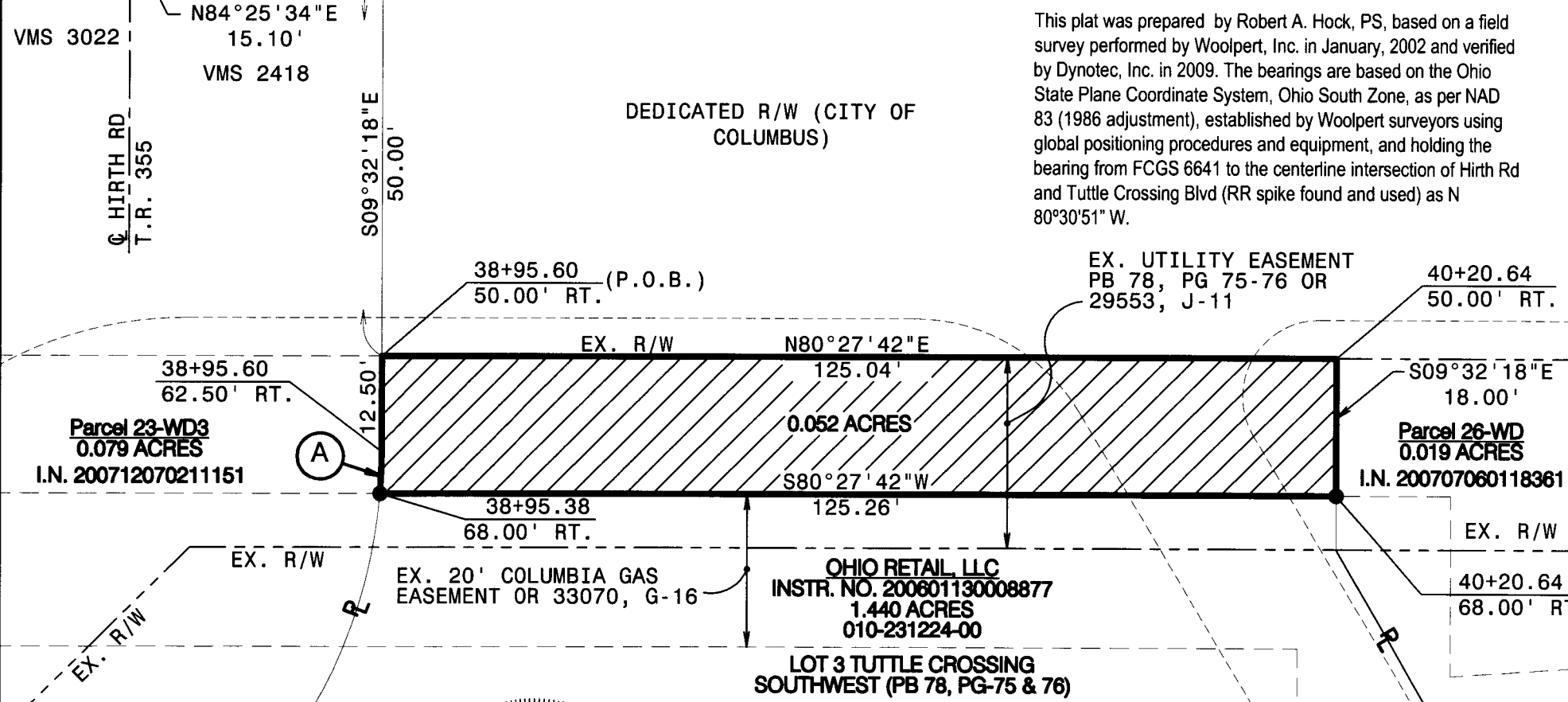
LEGEND

- - MONUMENT FOUND
- - IRON PIN SET (5/8" REBAR, 30" LONG, WITH CAP STAMPED "FRANKLIN COUNTY ENGINEER")

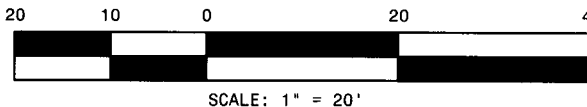
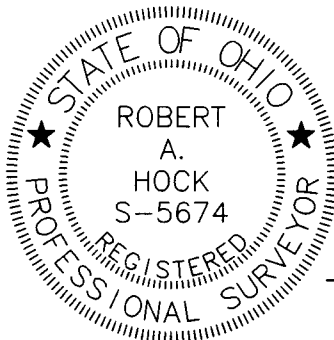
EXHIBIT B
PARCEL 25-WD (Revised)
 0.052 AC.
 CITY OF COLUMBUS,
 FRANKLIN COUNTY, OHIO
 VIRGINIA MILITARY SURVEY 2418




This plat was prepared by Robert A. Hock, PS, based on a field survey performed by Woolpert, Inc. in January, 2002 and verified by Dynotec, Inc. in 2009. The bearings are based on the Ohio State Plane Coordinate System, Ohio South Zone, as per NAD 83 (1986 adjustment), established by Woolpert surveyors using global positioning procedures and equipment, and holding the bearing from FCGS 6641 to the centerline intersection of Hirth Rd and Tuttle Crossing Blvd (RR spike found and used) as N 80°30'51" W.



Ⓐ
 R = 67.50'
 Δ = 04°40'27"
 CH = 5.51'
 CH BRG. = N 07°12'05" W
 L = 5.51'



[Signature] 4/27/09
 ROBERT A. HOCK, P.S. DATE
 PROFESSIONAL SURVEYOR NO. 5674

PARCEL 25-WD	
REVISED TUTTLE CROSSING RW PARCEL	
DATE: 04/27/09	 <small>DYNOTEC, INC. 3311 E. Dublin-Granville Rd., Suite 200 Columbus, Ohio 43231 (614) 880-7200 Fax: (614) 880-7324</small>
DRAWN: BLM CHECKED: JSB	