



Evans, Mechwart, Hambleton & Tilton, Inc.
 Engineers • Surveyors • Planners • Scientists
 5500 New Albany Road, Columbus, OH 43054
 Phone: 614.775.4500 Fax: 614.775.4800

M C M X X V I

SURVEY OF ACREAGE TRACT
SURVEY NUMBER 8231
VIRGINIA MILITARY DISTRICT
CITY OF GROVE CITY, COUNTY OF FRANKLIN, STATE OF OHIO

M-1-C

Date: March 16, 2009

Scale: 1" = 40'

Job No: 2008-1388

RECEIVED

MAR 17 2009

Franklin County Engineer
 Dean C. Ringle, P.E., P.S.

- ① $\Delta = 43^{\circ}47'05''$
 $R = 58.35'$
 $Arc = 44.59'$
 $ChB = N54^{\circ}52'47''E$
 $ChD = 43.51'$
- ② $S04^{\circ}03'46''W$
 $7.60'$
- ③ $\Delta = 90^{\circ}27'46''$
 $R = 20.00'$
 $Arc = 31.58'$
 $ChB = S49^{\circ}17'39''W$
 $ChD = 28.40'$
- ④ $N85^{\circ}28'28''W$
 $13.57'$

KELLER FARM EAST
 SECTION ONE
 P.B. 69, P. 68
 58
 040-006915
 MICHAEL H. BOGGS
 DIANA S. BOGGS
 O.R. 14908C09

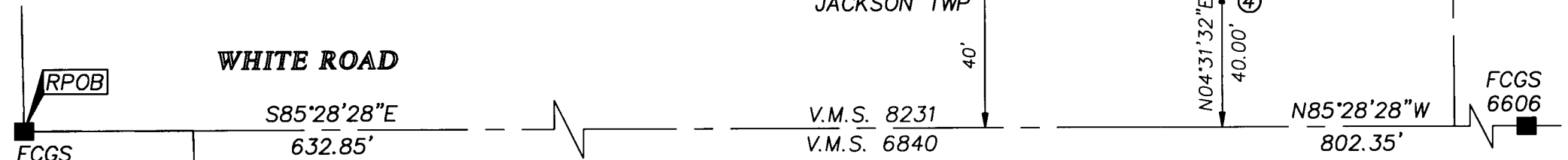
0.006 AC.

TPOB

MCDOWELL ROAD

CITY OF GROVE CITY
 JACKSON TWP

WHITE ROAD



- = STONE FND.
- = MON. FND.
- = I.P. FND.
- = I.P. SET
- = MAG. NAIL FND.
- = MAG. NAIL SET
- ▲ = R.R. SPK. FND.
- △ = R.R. SPK. SET
- = P.K. NAIL FND.


I.P. Set are 13/16" I.D. iron pipes with cap inscribed EMHT INC



GRAPHIC SCALE (in feet)

BASIS OF BEARINGS:
 The bearings shown hereon are based on the Ohio State Plane Coordinate System, South Zone per NAD83 (1986 Adjustment). Control for bearings was from coordinates of monuments FCGS 6633 and FCGS 0025. The portion of the centerline of White Road between monuments FCGS 6605 and FCGS 6606, having a bearing of South 85° 28' 28" East and monumented as shown hereon, is designated the "basis of bearing" for this survey.



By 
 Professional Surveyor No. 8250

3/16/09

\\CH\DATA\1\SURVEY\PROJECT\2008\388\DWG\81388bv2.DWG-LEGAL LANDS - NO XREFS - LAST SAVED BY SCEIGER [3/16/2009 11:04:16 AM] - PLOTTED BY SCEIGER [3/16/2009 11:20:06 AM]