

K-5-F

STATE OF OHIO,
COUNTY OF FRANKLIN,
CITY OF COLUMBUS,
SECTION 1, TOWNSHIP
11, RANGE 21,
CONGRESS LANDS

BEARING REFERENCE

BEARINGS SHOWN HEREON ARE BASED ON SOUTH 05°24'29" WEST FOR THE WESTERLY RIGHT-OF-WAY LINE OF GENDER ROAD AS REFERENCE IN OFFICIAL RECORD VOLUME 15953, PAGE F10.

LEGEND

- ⊙ IRON PIN FOUND (CAPPED AS NOTED)
- ⊙ IRON PIN SET
1" O.D. PIPE 30" LONG
"M-E COMPANIES/S-6872"
- DRILL HOLE SET
- ⊙ MAG NAIL SET
- RAILROAD SPIKE FOUND

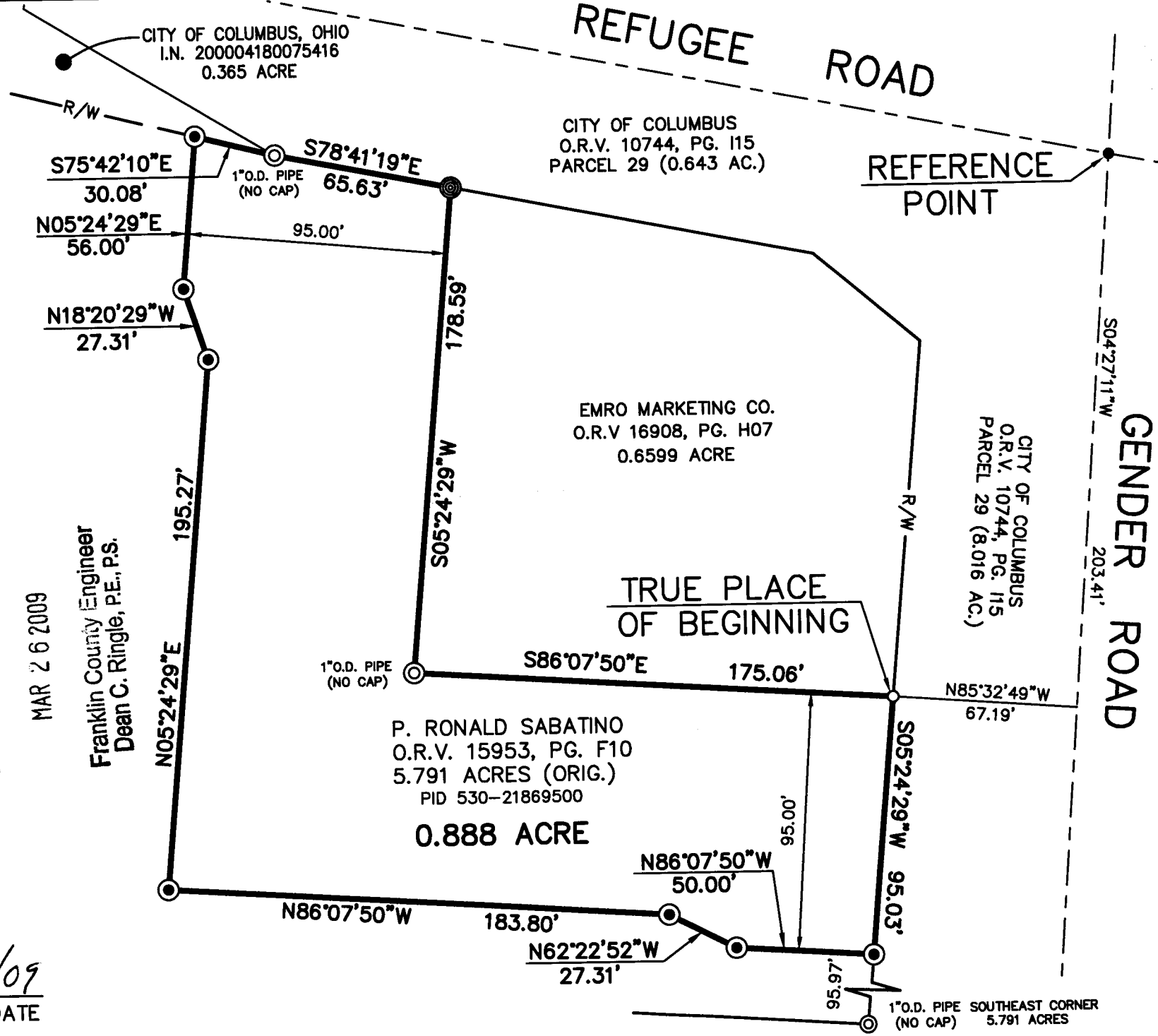


RECEIVED

MAR 26 2009

Franklin County Engineer
Dean C. Ringle, P.E., P.S.

BY *David L. Chiesa* 3/25/09
DAVID L. CHIESA P.S. #7740 DATE



M-E COMPANIES

633 Brookside Boulevard
Westerlyville, OH 43081
Contact: Dave Chiesa
614-818-4900 ext. 225
Fax: 614-818-4902
www.mecompanies.com

PROPERTY SPLIT
EXHIBIT
GENDER ROAD & REFUGEE ROAD
COLUMBUS, OHIO

GRAPHIC SCALE
0 50 100
(IN FEET)
1 inch = 50 ft.

J:\07\07-355\dwg\0735559-UT.dwg by dchiesa on 03/25/2009 01:28:18 pm for M-E Companies, Inc.