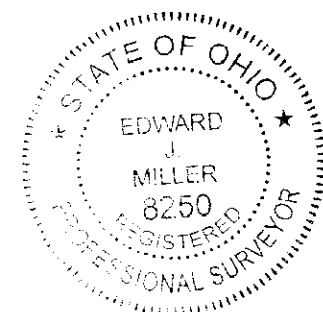
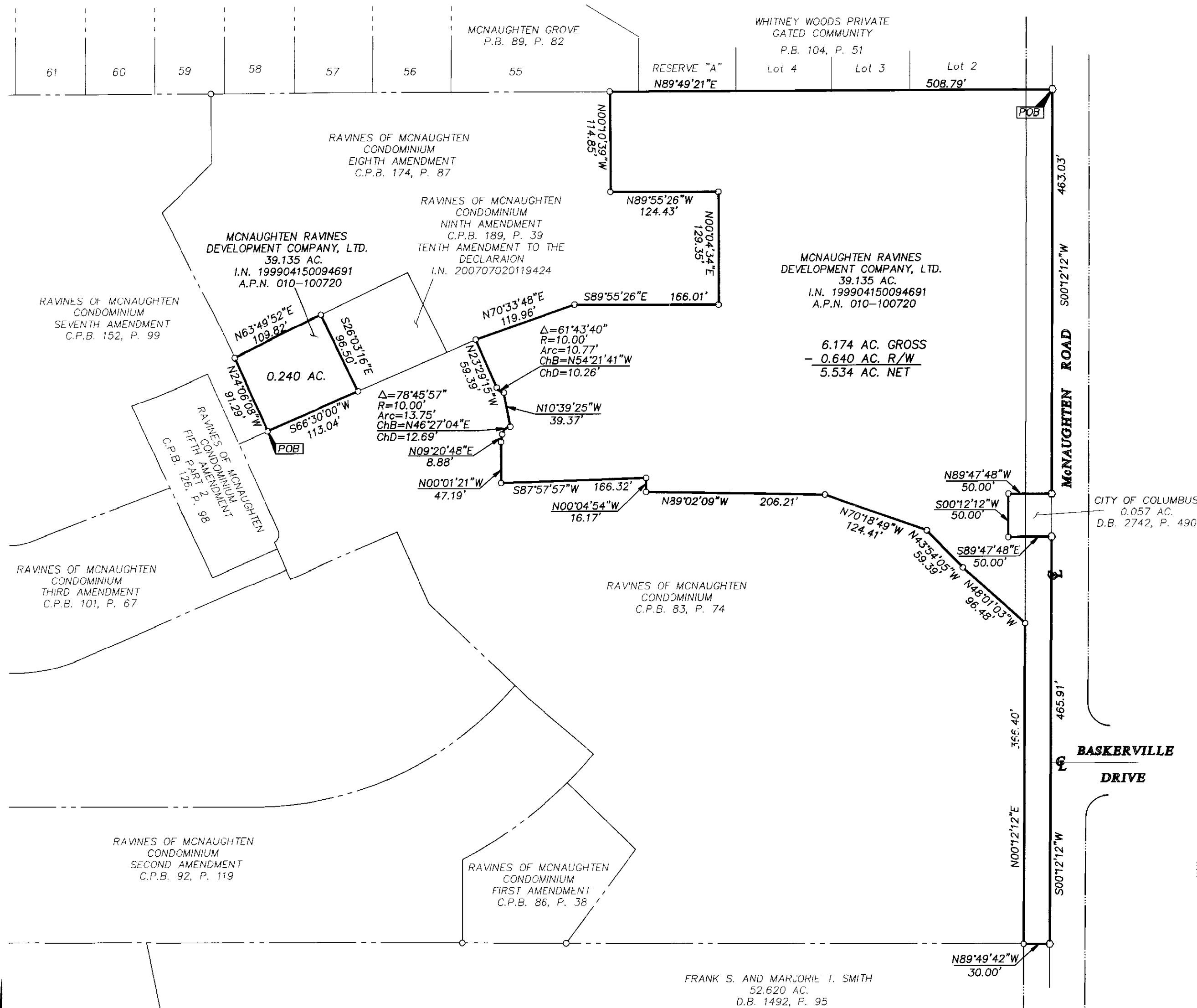
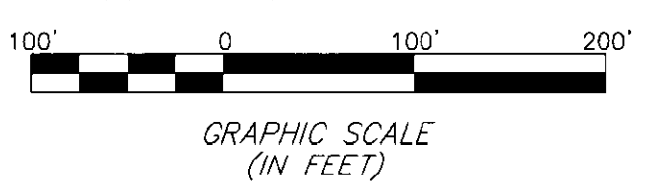


# SURVEY OF ACREAGE TRACT HALF SECTION 15, SECTION 11, TOWNSHIP 12, RANGE 21 REFUGEE LANDS CITY OF COLUMBUS, COUNTY OF FRANKLIN, STATE OF OHIO



- = STONE FND.
  - = MON. FND.
  - = I.P. FND.
  - = I.P. SET
  - = MAG. NAIL FND.
  - = MAG. NAIL SET
  - ▲ = R.R. SPK. FND.
  - △ = R.R. SPK. SET
  - ◆ = P.K. NAIL FND.
- I.P. Set are 13/16" I.D. iron pipe with cap inscribed EMHT INC



This survey is based on an actual field survey performed by EMH&T, Inc., in July 1997.

**BASIS OF BEARINGS:** The bearing shown hereon are based on the same meridian shown on the recorded plat entitled "Smythe Farms" as shown of record in Plat Book 48, Page 53, Recorder's Office, Franklin County, Ohio. In which the centerline of McNaughten Road has a bearing of North 00°12'12" East.

FRANK S. AND MARJORIE T. SMITH  
52.620 AC.  
D.B. 1492, P. 95

By Professional Surveyor No. 8250

<b>EMHT</b> Evans, Mechwart, Hombleson & Tilton, Inc. Engineers • Surveyors • Planners • Scientists 5500 New Albany Road, Columbus, OH 43254 Phone: 614.775.4500 Fax: 614.775.4800		Date: February 6, 2009
		Scale: 1" = 100'
		Job No: 2009-0112
		Sheet: 1 of 1
REVISIONS		
MARK	DATE	DESCRIPTION

\\OHDATA01\SURVEY\PROJECT\20090112\DWG\90112BV.DWG<18X24 LANDSCAPE> - NO XREFS - LAST SAVED BY TBAXTER [2/6/2009 8:46:58 AM] - PLOTTED BY TBAXTER [2/6/2009 9:03:11 AM]