



Evans, Mechwart, Hambleton & Tilton, Inc.
 Engineers • Surveyors • Planners • Scientists
 5500 New Albany Road, Columbus, OH 43054
 Phone: 614.775.4500 Fax: 614.775.4800

M C M X X V

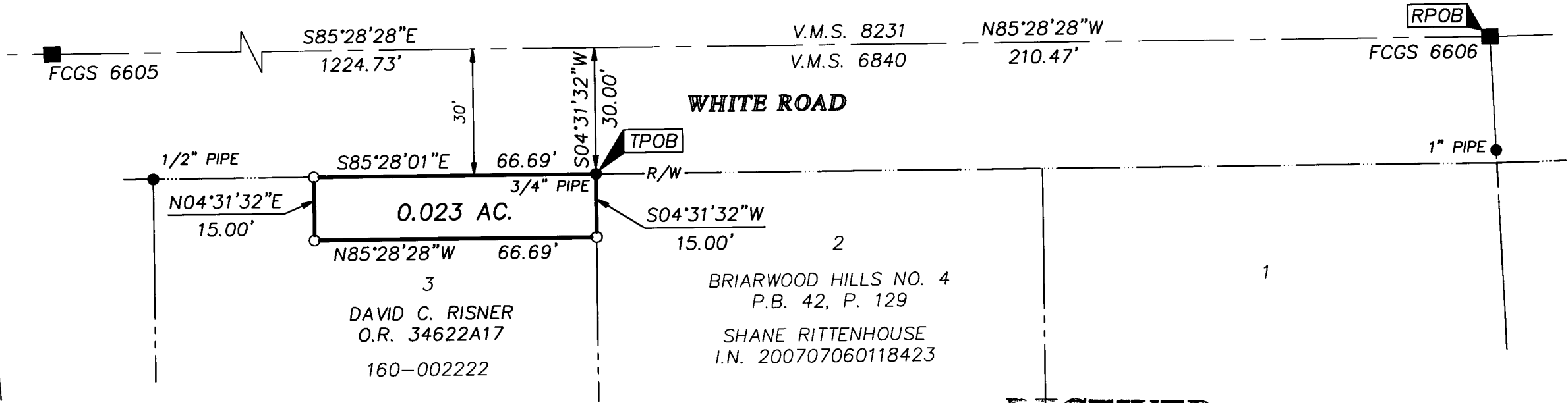
SURVEY OF ACREAGE TRACT SURVEY NUMBER 6840

VIRGINIA MILITARY DISTRICT TOWNSHIP OF JACKSON, COUNTY OF FRANKLIN, STATE OF OHIO

Date: February 19, 2009

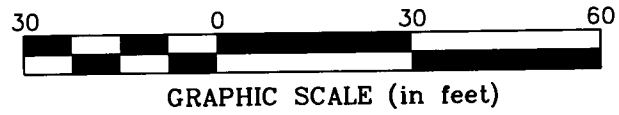
Scale: 1" = 30'

Job No: 2008-1388



- = STONE FND.
- = MON. FND.
- = I.P. FND.
- = I.P. SET
- = MAG. NAIL FND.
- = MAG. NAIL SET
- ▲ = R.R. SPK. FND.
- △ = R.R. SPK. SET
- ◆ = P.K. NAIL FND.

I.P. Set are 13/16" I.D. iron pipes with cap inscribed EMHT INC



BASIS OF BEARINGS:
 The Bearings shown hereon are based on the Ohio State Plane Coordinate System, South Zone per NAD83 (1986 Adjustment). Control for bearings was from coordinates of monuments FCGS 6633 and FCGS 0025. The portion of the centerline of White Road between monuments FCGS 6605 and FCGS 6606, having a bearing of South $85^{\circ} 28' 28''$ East and monumented as shown hereon, is designated the "basis of bearing" for this survey.

BRIARWOOD HILLS NO. 4
 P.B. 42, P. 129
 SHANE RITTENHOUSE
 I.N. 200707060118423

3
 DAVID C. RISNER
 O.R. 34622A17
 160-002222

RECEIVED

FEB 24 2009

Franklin Survey Engineer
 Dean C. King, P.E., P.S.



By 2/24/09
 Professional Surveyor No. 8250