



Evans, Mechwart, Hambleton & Tilton, Inc.
 Engineers • Surveyors • Planners • Scientists
 5500 New Albany Road, Columbus, OH 43054
 Phone: 614.775.4500 Fax: 614.775.4800

M C M X X V I

SURVEY OF ACREAGE TRACT
SURVEY NUMBER 8231
VIRGINIA MILITARY DISTRICT
CITY OF GROVE CITY, COUNTY OF FRANKLIN, STATE OF OHIO

Date: February 19, 2009
 Scale: 1" = 40'
 Job No: 2008-1388

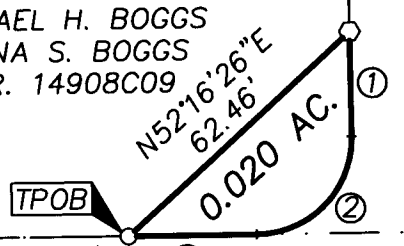
- ① S04°03'46"W
21.84'
- ② Δ=90°27'46"
R=20.00'
Arc=31.58'
ChB=S49°17'39"W
ChD=28.40'
- ③ N85°28'28"W
26.41'

RECEIVED

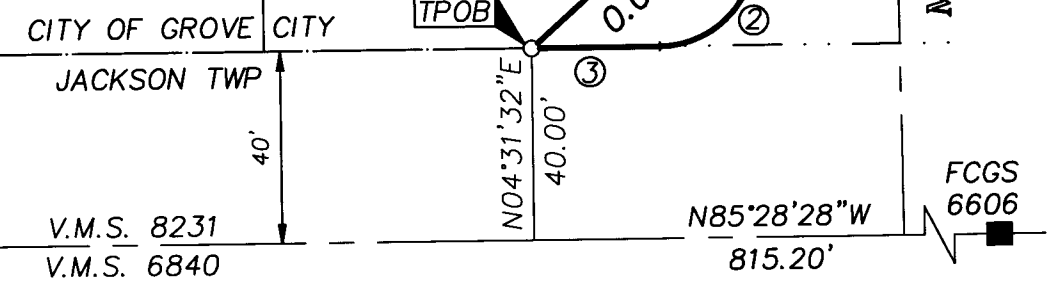
FEB 24 2009

Franklin County Engineer
 Dean C. Ringle, P.E., P.S.

KELLER FARM EAST
 SECTION ONE
 P.B. 69, P. 68
 58
 040-006915
 MICHAEL H. BOGGS
 DIANA S. BOGGS
 O.R. 14908C09

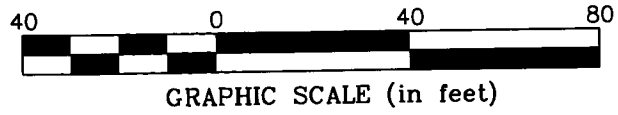


MCDOWELL ROAD

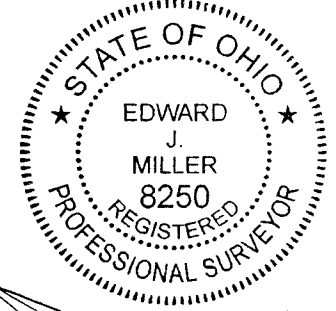



- = STONE FND.
- = MON. FND.
- = I.P. FND.
- = I.P. SET
- = MAG. NAIL FND.
- = MAG. NAIL SET
- ▲ = R.R. SPK. FND.
- △ = R.R. SPK. SET
- = P.K. NAIL FND.

I.P. Set are 13/16" I.D. iron pipes with cap inscribed EMHT INC



BASIS OF BEARINGS:
 The bearings shown hereon are based on the Ohio State Plane Coordinate System, South Zone per NAD83 (1986 Adjustment). Control for bearings was from coordinates of monuments FCGS 6633 and FCGS 0025. The portion of the centerline of White Road between monuments FCGS 6605 and FCGS 6606, having a bearing of South 85° 28' 28" East and monumented as shown hereon, is designated the "basis of bearing" for this survey.



By 
 Professional Surveyor No. 8250

\\CMHDATA01\PROJECTS\20081388\DWG\81388BV2.DWG<LEGAL LAND> - NO XREFS - LAST SAVED BY SCEIGER [2/20/2009 12:44:36 PM] - PLOTTED BY SCEIGER [2/24/2009 9:44:49 AM]