

# PLAT OF SURVEY

SITUATED IN THE STATE OF OHIO, COUNTY OF FRANKLIN, CITY OF GAHANNA, BEING LOCATED IN QUARTER TOWNSHIP 2, TOWNSHIP 1, RANGE 16, UNITED STATES MILITARY LANDS AND BEING PART OF A 0.918 ACRE TRACT OF LAND IN THE NAME OF WAGY REAL ESTATE COMPANY, AS DESCRIBED IN INSTRUMENT NUMBER 200101090006023, RECORDER'S OFFICE, FRANKLIN COUNTY, OHIO.

STONEY MEMORIAL, LTD.  
P.I.D.: 025-011725  
0.094 & 1.134 ACRES

INSTR.#: 199811050284370  
01.134 ACRE PARCEL

INSTR.#: 200007210144443  
0.094 ACRE PARCEL

CITY OF GAHANNA  
0.191 ACRE  
INSTR.#: 199712220172716

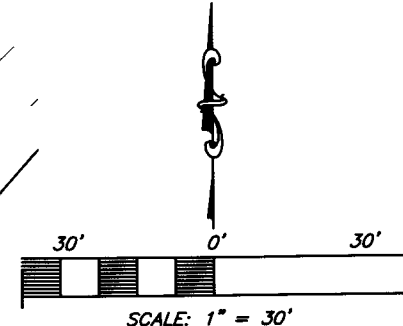
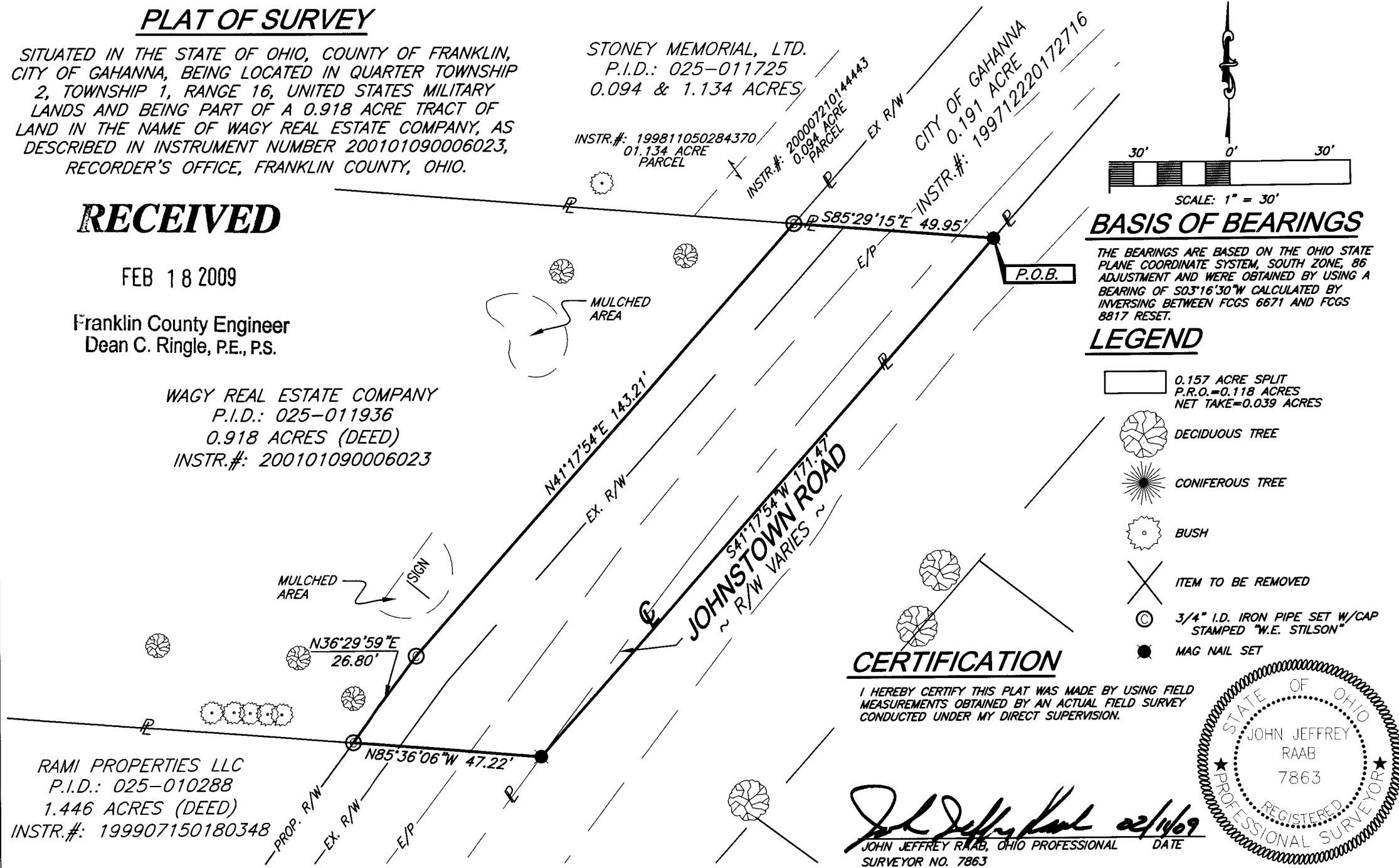
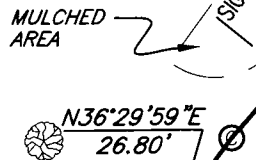
## RECEIVED

FEB 18 2009

Franklin County Engineer  
Dean C. Ringle, P.E., P.S.

WAGY REAL ESTATE COMPANY  
P.I.D.: 025-011936  
0.918 ACRES (DEED)  
INSTR.#: 200101090006023

RAMI PROPERTIES LLC  
P.I.D.: 025-010288  
1.446 ACRES (DEED)  
INSTR.#: 199907150180348



### BASIS OF BEARINGS

THE BEARINGS ARE BASED ON THE OHIO STATE PLANE COORDINATE SYSTEM, SOUTH ZONE, 86 ADJUSTMENT AND WERE OBTAINED BY USING A BEARING OF S03°16'30\"/>

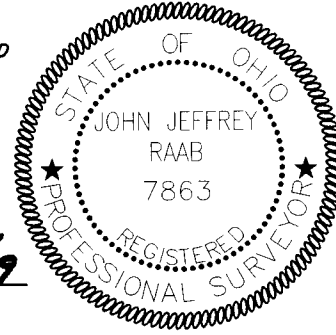
### LEGEND

- 0.157 ACRE SPLIT  
P.R.O.=0.118 ACRES  
NET TAKE=0.039 ACRES
- DECIDUOUS TREE
- CONIFEROUS TREE
- BUSH
- ITEM TO BE REMOVED
- 3/4\"/>

### CERTIFICATION

I HEREBY CERTIFY THIS PLAT WAS MADE BY USING FIELD MEASUREMENTS OBTAINED BY AN ACTUAL FIELD SURVEY CONDUCTED UNDER MY DIRECT SUPERVISION.

*John Jeffrey Raab* 02/14/09  
JOHN JEFFREY RAAB, OHIO PROFESSIONAL SURVEYOR NO. 7863 DATE



W.E. STILSON  
CONSULTING GROUP



Pride in the Details. Passion in our People.

PROJECT: U.S. 62 ROADWAY IMPROVEMENTS

CLIENT: CITY OF GAHANNA

JOB #: 08505.00  
DRAWN BY: J.PAYNE  
DATE: JANUARY 21, 2009  
APPROVED BY: JJR