

SITUATED IN THE STATE OF OHIO, COUNTY OF FRANKLIN, CITY OF COLUMBUS. BEING PART OF THE EXISTING STREET RIGHT-OF-WAY OF EIGHTEENTH STREET AS SHOWN ON THE PLAT OF BRUCK PLACE ADDITION, PLAT BOOK 13, PAGE 3, AND PART OF THE EXISTING STREET RIGHT-OF-WAY OF EIGHTEENTH STREET (FORMERLY KNOWN AS GRETNNA STREET) AS SHOWN ON THE PLAT OF MILLER'S DESHLER AVE. ADDITION TO THE CITY OF COLUMBUS, PLAT BOOK 10, PAGE 226.

**SANDS
DECKER
CPS**

ENGINEERS • SURVEYORS

397 WEST FRONT ST
LOGAN, OH 43138
740-385-2140
FAX: 740-385-0491

1495 OLD HENDERSON RD
COLUMBUS, OH 43220
614-459-6992
FAX: 614-459-6987
TOLL FREE: 866-277-0600

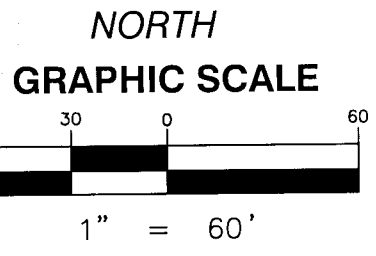
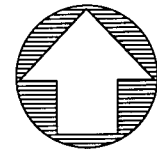
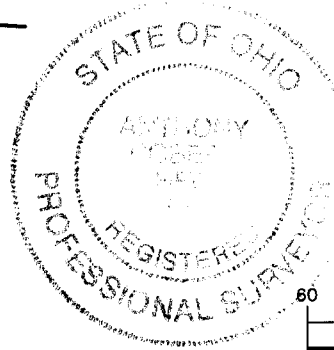
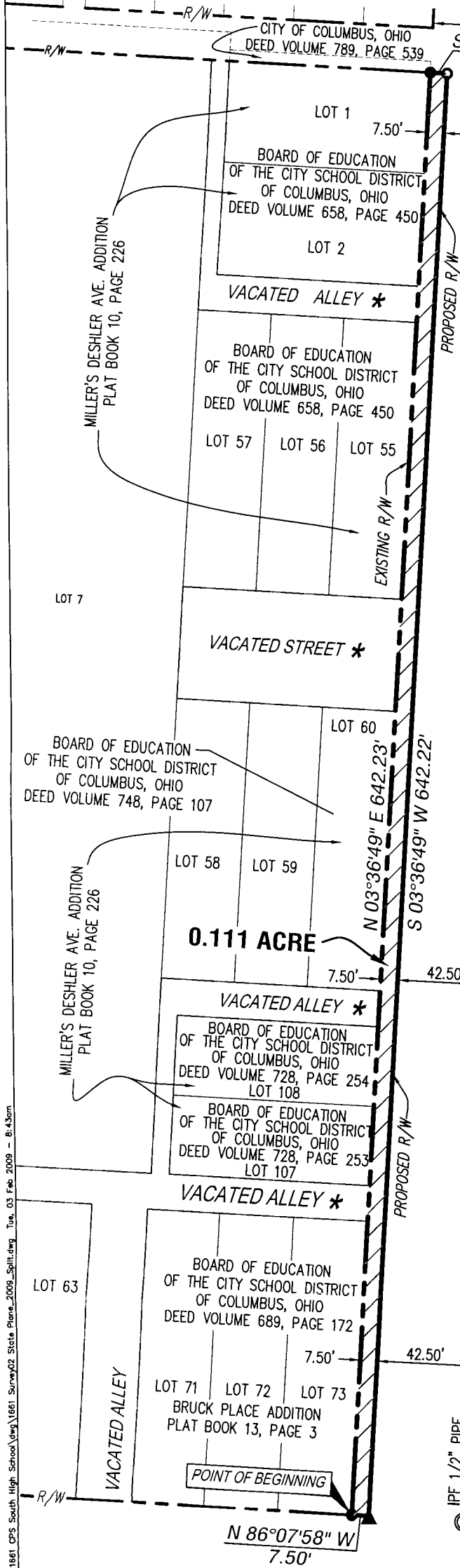
507 MAIN STREET, SUITE 203
ZANESVILLE, OH 43701
740-450-1640
FAX: 740-450-1641

- 3/4" IRON PIPE SET WITH CAP INSCRIBED "SANDS DECKER"
- MAG NAIL SET
- ▲ 1/2" REBAR SET
- * ORDINANCE NO. 35198, DATED MAY 19, 1924

RECEIVED

FEB 10 2009

Franklin County Engineer
Dean C. Ringle, P.E., P.S.



**0.111 ACRE SURVEY
7.5' WIDE STRIP OF
EIGHTEENTH STREET RIGHT-OF-WAY
FOR
THE COLUMBUS PUBLIC SCHOOLS**

BEARINGS ARE BASED ON THE WESTERLY RIGHT-OF-LINE LINE OF EIGHTEENTH STREET AS NORTH 03° 36' 49" EAST, AS DETERMINED FROM GPS OBSERVATION OF FRANKLIN COUNTY GEODETIC MONUMENTS FRANK 43, FRANK 143 AND FRANK 134, OHIO STATE PLANE COORDINATE SYSTEM - OHIO SOUTH ZONE, NAD83 (1986 ADJUSTMENT)

THIS PLAT IS BASED ON AN ACTUAL FIELD SURVEY PERFORMED BY SANDS DECKER, LTD. JANUARY 2007 AND BY SANDS DECKER CPS, LLC IN DECEMBER 2008 AND IS BASED ON RECORDS ON FILE AT THE FRANKLIN COUNTY RECORDER'S OFFICE.

Anthony R. Sheck

ANTHONY R. SHECK PS #6954

2-3-09

DATE

S:\DesignGroup\1661 CPS South High School\1661 Survey\02 State Plane_2009_Split.dwg Tue, 03 Feb 2009 - 8:43am