

G-3-D



Evans, Mechwart, Hambleton & Tilton, Inc.  
Engineers • Surveyors • Planners • Scientists  
5500 New Albany Road, Columbus, OH 43054  
Phone: 614.775.4500 Fax: 614.775.4800

# SURVEY OF ACREAGE TRACT SECTION 15, TOWNSHIP 5, RANGE 22 REFUGEE LANDS CITY OF COLUMBUS, COUNTY OF FRANKLIN, STATE OF OHIO

Date: September 9, 2008

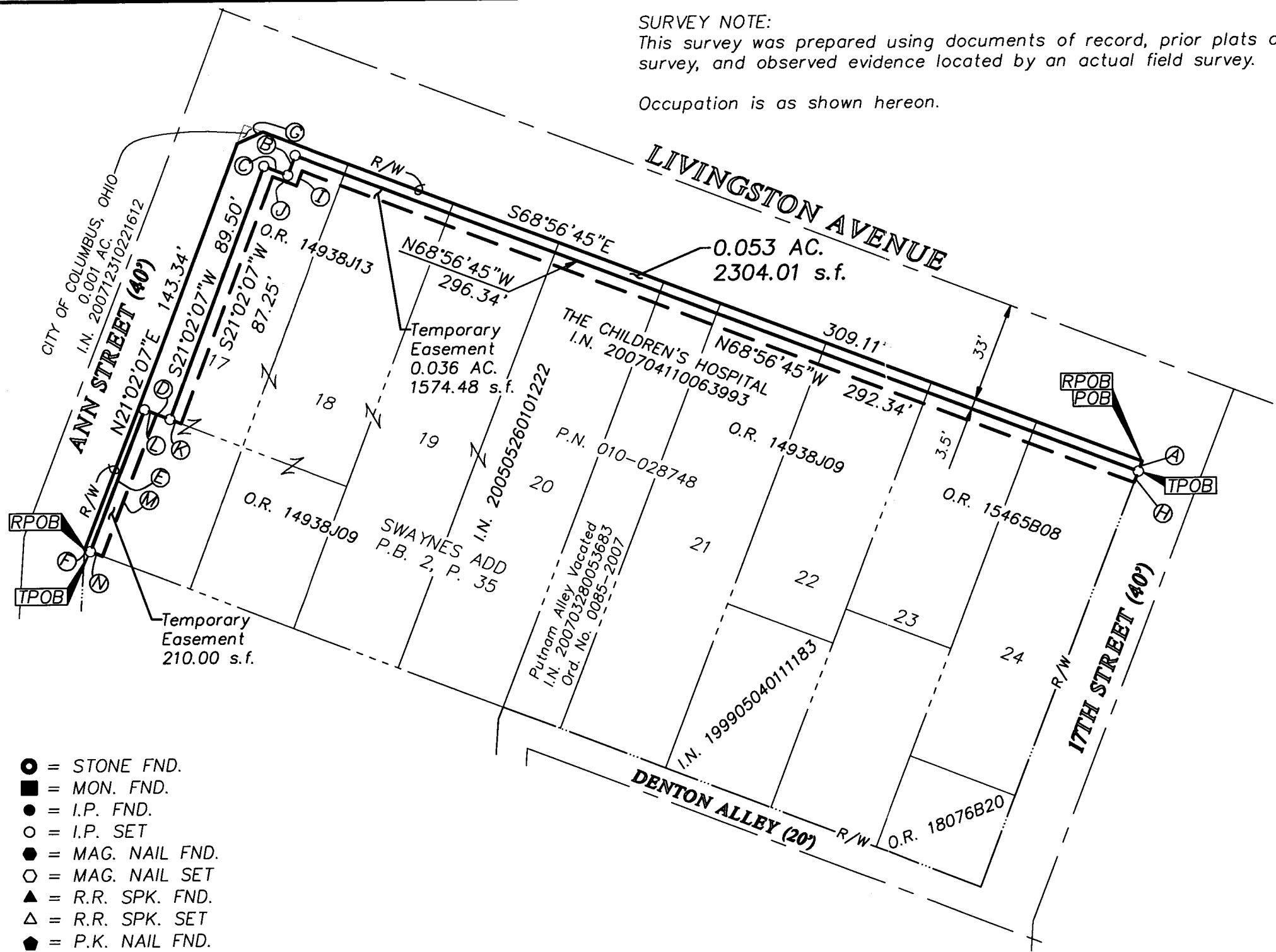
Scale: 1" = 40'

Job No: 2008-0121

### SURVEY NOTE:

This survey was prepared using documents of record, prior plats of survey, and observed evidence located by an actual field survey.

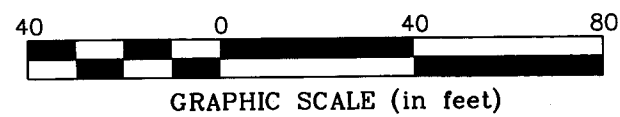
Occupation is as shown hereon.



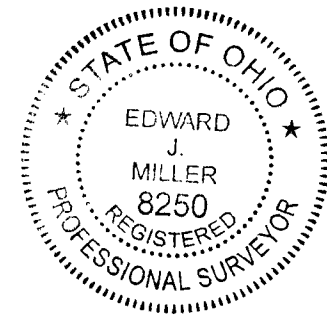
LINE TABLE		
LINE	BEARING	LENGTH
A	S21°02'07"W	3.50
B	S21°02'07"W	7.00
C	N68°56'45"W	8.50
D	N68°56'45"W	9.00
E	S21°02'07"W	50.00
F	N68°56'45"W	2.00
G	N66°19'38"E	9.46
H	S21°02'07"W	4.00
I	S21°02'07"W	5.25
J	N68°56'45"W	8.50
K	N68°56'45"W	4.00
L	N68°56'45"W	4.20
M	S21°02'07"W	50.00
N	N68°56'45"W	4.20

- = STONE FND.
- = MON. FND.
- = I.P. FND.
- = I.P. SET
- = MAG. NAIL FND.
- = MAG. NAIL SET
- ▲ = R.R. SPK. FND.
- △ = R.R. SPK. SET
- ◆ = P.K. NAIL FND.

I.P. Set are 13/16" I.D. iron pipes with cap inscribed EMHT INC



**BASIS OF BEARINGS:** Bearings are based on the Ohio State Plane Coordinate System, South Zone, per NAD83 (1986 Adjustment). Control for bearings was from coordinates of monuments Frank 43 & Frank 143, having a bearing of South 87° 56' 16" East, established by the Franklin County Engineering Department.



## RECEIVED

JAN 29 2009

Franklin County Engineer  
Dean C. Ringle, P.E., P.S.

*[Signature]*  
By \_\_\_\_\_  
Professional Surveyor No. 8250