

G-3-E

**EMH&T**  
 Evans, Mechwart, Hambleton & Tilton, Inc.  
 Engineers • Surveyors • Planners • Scientists  
 5500 New Albany Road, Columbus, OH 43054  
 Phone: 614.775.4500 Fax: 614.775.4800

**SURVEY OF ACREAGE TRACT  
 SECTION 16, TOWNSHIP 5, RANGE 22  
 REFUGEE LANDS  
 CITY OF COLUMBUS, COUNTY OF FRANKLIN, STATE OF OHIO**

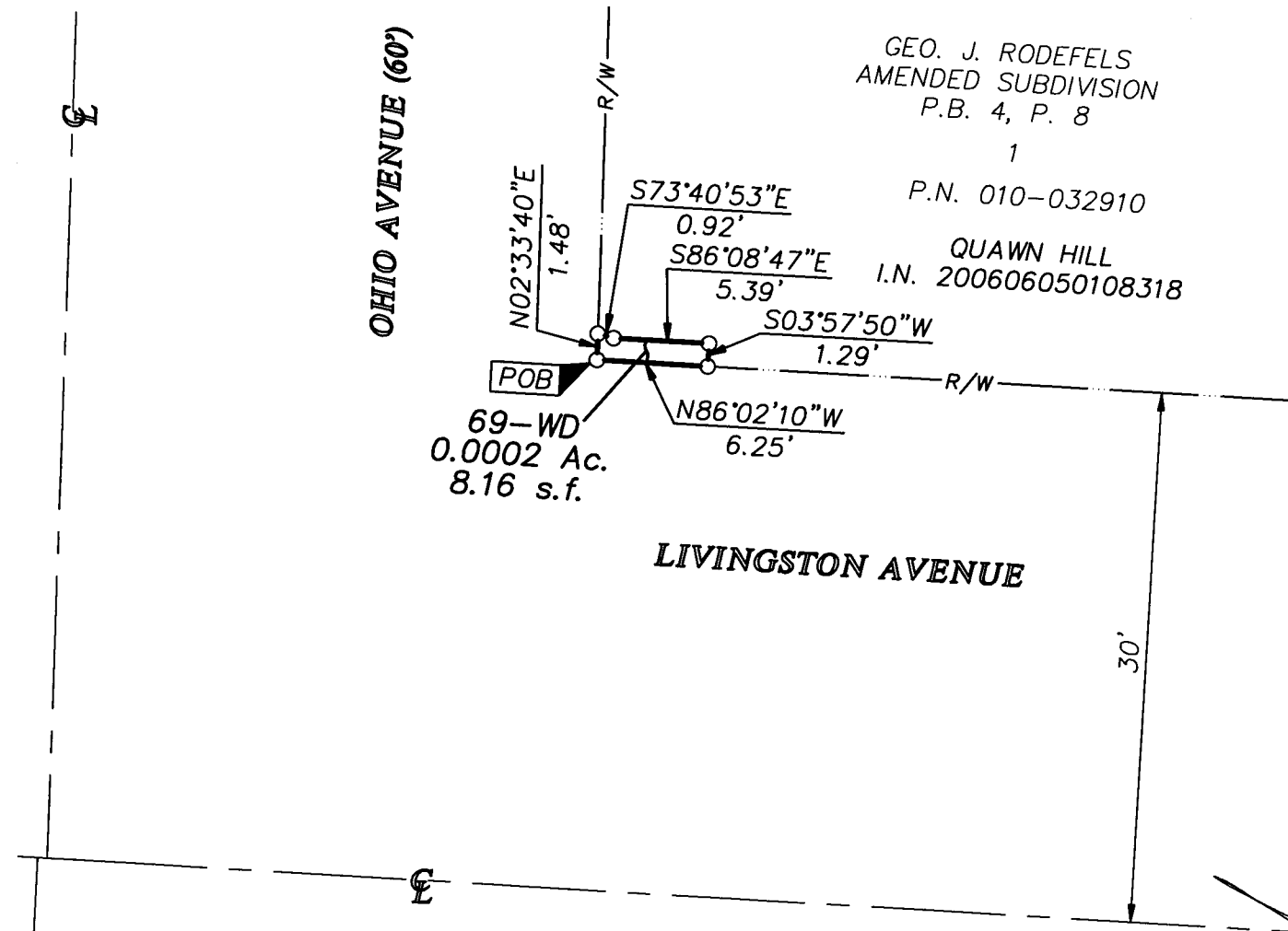
Date: January 26, 2009  
 Scale: 1" = 10'  
 Job No: 2008-0121

**RECEIVED**

JAN 29 2009

Franklin County Engineer  
Dean C. Ringle, P.E., P.S.

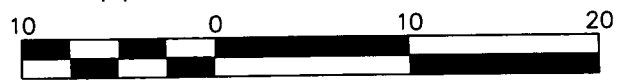
GEO. J. RODEFELS  
 AMENDED SUBDIVISION  
 P.B. 4, P. 8  
 1  
 P.N. 010-032910  
 QUAWN HILL  
 I.N. 200606050108318



**SURVEY NOTE:**  
 - This survey was prepared using documents of record, prior plats of survey, and observed evidence located by an actual field survey.  
 - Occupation is as shown hereon.

- = STONE FND.
- = MON. FND.
- = I.P. FND.
- = I.P. SET
- = MAG. NAIL FND.
- = MAG. NAIL SET
- ▲ = R.R. SPK. FND.
- △ = R.R. SPK. SET
- ◆ = P.K. NAIL FND.

I.P. Set are 13/16" I.D. iron pipes with cap inscribed EMHT INC



GRAPHIC SCALE (in feet)

**BASIS OF BEARINGS:** Bearings are based on the Ohio State Plane Coordinate System, South Zone, per NAD83 (1986 Adjustment). Control for bearings was from coordinates of monuments Frank 43 & Frank 143, having a bearing of South 87° 56' 16" East, established by the Franklin County Engineering Department.

By \_\_\_\_\_  
 Professional Surveyor No. 8250



1/29/09