

G-3-D



Evans, Mechwart, Hambleton & Tilton, Inc.
Engineers • Surveyors • Planners • Scientists
5500 New Albany Road, Columbus, OH 43054
Phone: 614.775.4500 Fax: 614.775.4800

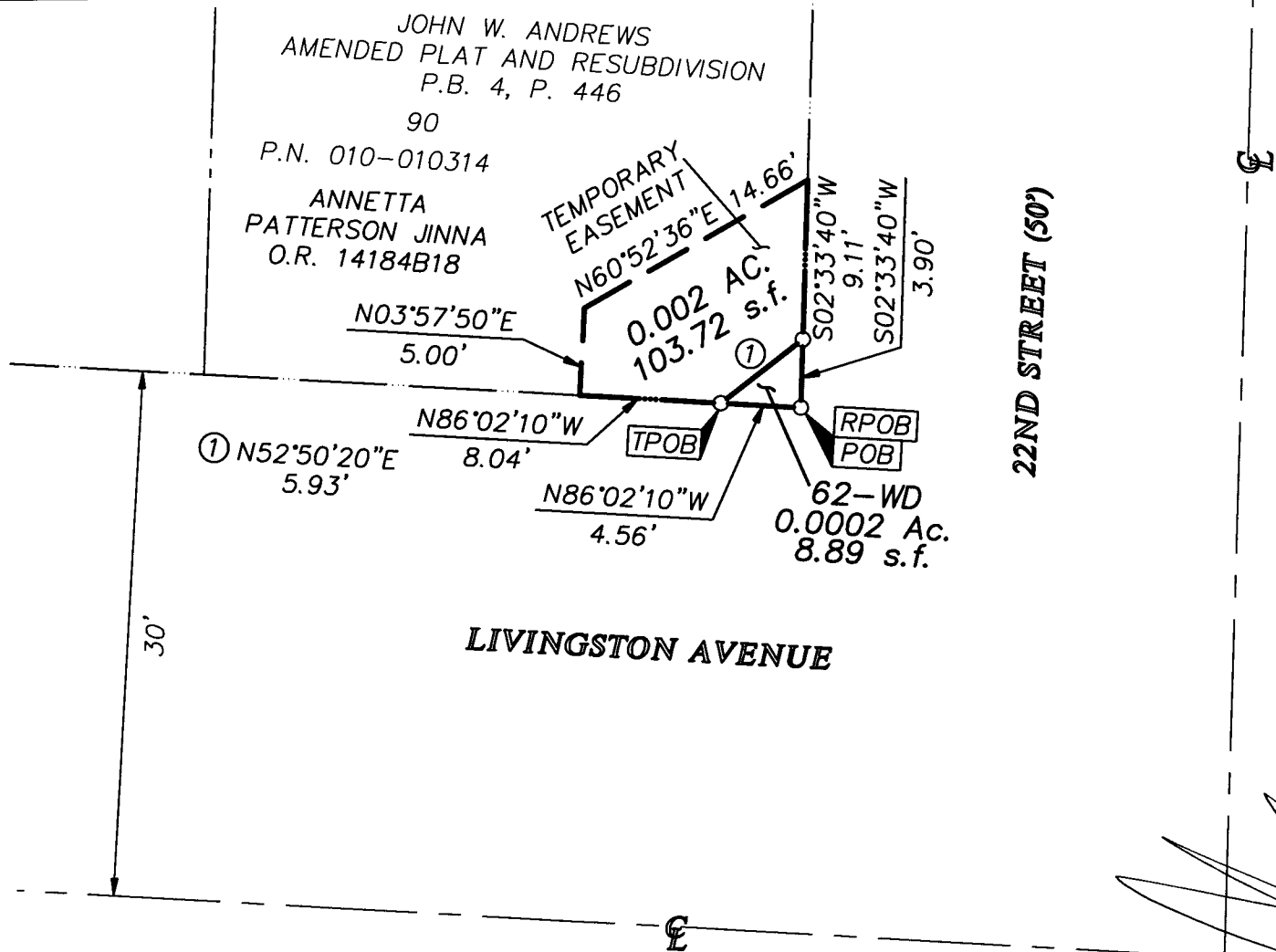
SURVEY OF ACREAGE TRACT SECTION 16, TOWNSHIP 5, RANGE 22 REFUGEE LANDS CITY OF COLUMBUS, COUNTY OF FRANKLIN, STATE OF OHIO

Date: January 26, 2009

Scale: 1" = 10'

Job No: 2008-0121

M C M X X V I



SURVEY NOTE:
 - This survey was prepared using documents of record, prior plats of survey, and observed evidence located by an actual field survey.
 - Occupation is as shown hereon.

RECEIVED
 JAN 29 2009
 Franklin County Engineer
 Dean C. Ringle, P.E., P.S.

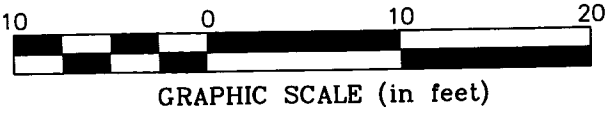


- = STONE FND.
- = MON. FND.
- = I.P. FND.
- = I.P. SET
- = MAG. NAIL FND.
- = MAG. NAIL SET
- ▲ = R.R. SPK. FND.
- △ = R.R. SPK. SET
- ◆ = P.K. NAIL FND.

I.P. Set are 13/16" I.D. iron pipes with cap inscribed EMHT INC

BASIS OF BEARINGS: Bearings are based on the Ohio State Plane Coordinate System, South Zone, per NAD83 (1986 Adjustment). Control for bearings was from coordinates of monuments Frank 43 & Frank 143, having a bearing of South 87° 56' 16" East, established by the Franklin County Engineering Department.

By _____
 Professional Surveyor No. 8250



\\CAMDATA01\SURVEY\PROJECT\20080121\DWG\80121RA31.DWG-LEGAL LANDS - NO XREFS - LAST SAVED BY JIMASTON [1/28/2009 3:31:57 PM] - PLOTTED BY JIMASTON [1/28/2009 3:31:57 PM]