

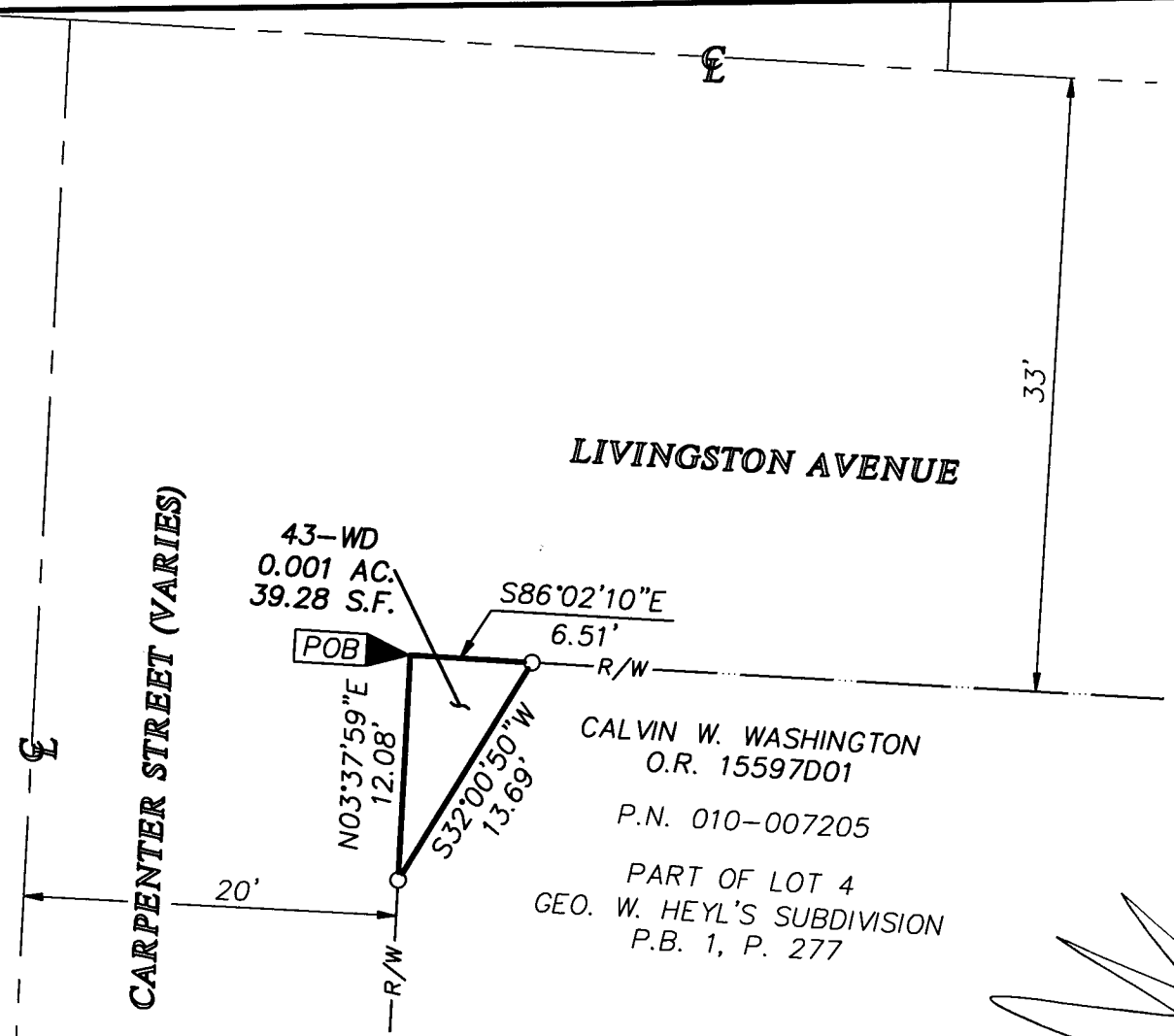
6-3-D

**EMH&T**  
 Evans, Mechwart, Hambleton & Tilton, Inc.  
 Engineers • Surveyors • Planners • Scientists  
 5500 New Albany Road, Columbus, OH 43054  
 Phone: 614.775.4500 Fax: 614.775.4800

**SURVEY OF ACREAGE TRACT  
 SECTION 22, TOWNSHIP 5, RANGE 22  
 REFUGEE LANDS  
 CITY OF COLUMBUS, COUNTY OF FRANKLIN, STATE OF OHIO**

Date: January 26, 2009  
 Scale: 1" = 10'  
 Job No: 2008-0121

**RECEIVED**  
 JAN 29 2009  
 Franklin County Engineer  
 Dean C. Ringle, P.E., P.S.

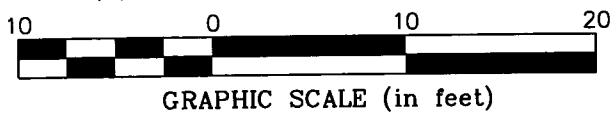


**SURVEY NOTE:**

- This survey was prepared using documents of record, prior plats of survey, and observed evidence located by an actual field survey.
- Occupation is as shown hereon.

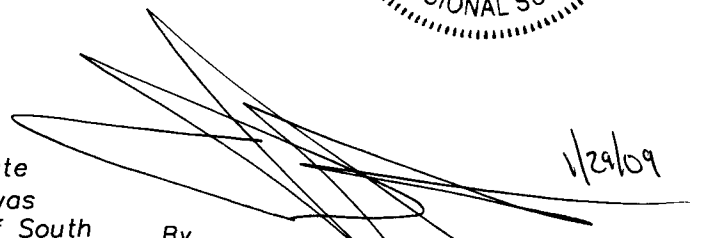
- = STONE FND.
- = MON. FND.
- = I.P. FND.
- = I.P. SET
- = MAG. NAIL FND.
- = MAG. NAIL SET
- ▲ = R.R. SPK. FND.
- △ = R.R. SPK. SET
- ◆ = P.K. NAIL FND.

I.P. Set are 13/16" I.D. iron pipes with cap inscribed EMHT INC



**BASIS OF BEARINGS:** Bearings are based on the Ohio State Plane Coordinate System, South Zone, per NAD83 (1986 Adjustment). Control for bearings was from coordinates of monuments Frank 43 & Frank 143, having a bearing of South 87° 56' 16" East, established by the Franklin County Engineering Department.



By   
 Professional Surveyor No. 8250

\\C:\DATA\01\SURVEY\PROJECT\20080121\DWG\80121RA29.DWG<LEGAL LAND> - NO XREFS - LAST SAVED BY JMASTON [1/28/2009 2:26:57 PM] - PLOTTED BY JMASTON [1/28/2009 2:26:57 PM]