

G-3-D



Evans, Mechwart, Hambleton & Tilton, Inc.
Engineers • Surveyors • Planners • Scientists
5500 New Albany Road, Columbus, OH 43054
Phone: 614.775.4500 Fax: 614.775.4800

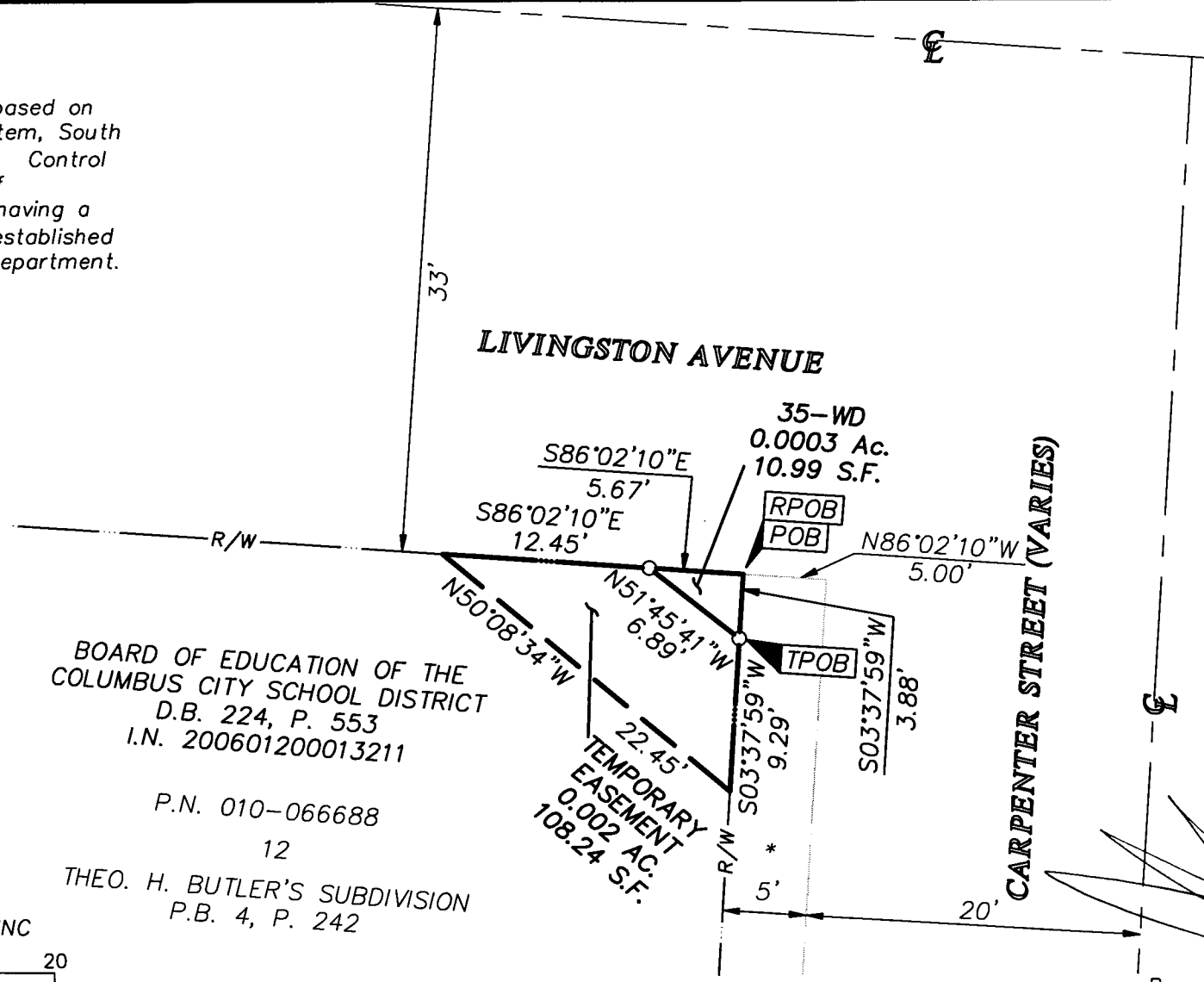
**SURVEY OF ACREAGE TRACT
SECTION 22, TOWNSHIP 5, RANGE 22
REFUGEE LANDS
CITY OF COLUMBUS, COUNTY OF FRANKLIN, STATE OF OHIO**

Date: January 26, 2009
Scale: 1" = 10'
Job No: 2008-0121

M C M X X V I

BASIS OF BEARINGS: Bearings are based on the Ohio State Plane Coordinate System, South Zone, per NAD83 (1986 Adjustment). Control for bearings was from coordinates of monuments Frank 43 & Frank 143, having a bearing of South 87° 56' 16" East, established by the Franklin County Engineering Department.

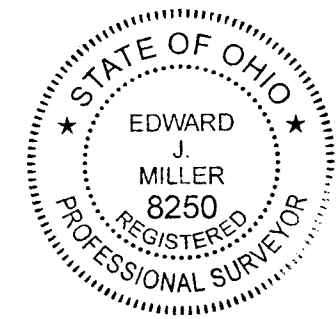
SURVEY NOTE:
- This survey was prepared using documents of record, prior plats of survey, and observed evidence located by an actual field survey.
- Occupation is as shown hereon.



RECEIVED

JAN 29 2009
Franklin County Engineer
Dean C. Ringle, P.E., P.S.

* Dedicated by
Ord. 7710
August 14, 1893



- = STONE FND.
- = MON. FND.
- = I.P. FND.
- = I.P. SET
- = MAG. NAIL FND.
- = MAG. NAIL SET
- ▲ = R.R. SPK. FND.
- △ = R.R. SPK. SET
- ◆ = P.K. NAIL FND.

I.P. Set are 13/16" I.D. iron pipes with cap inscribed EMHT INC



GRAPHIC SCALE (in feet)

BOARD OF EDUCATION OF THE
COLUMBUS CITY SCHOOL DISTRICT
D.B. 224, P. 553
I.N. 200601200013211

P.N. 010-066688
12

THEO. H. BUTLER'S SUBDIVISION
P.B. 4, P. 242

By
Professional Surveyor No. 8250
1/29/09

\\CM\DATA\01\SURVEY PROJECT\20080121\DWG\80121RA28.DWG<LEGAL LAND> - NO XREFS - LAST SAVED BY JIMASTON [1/28/2009 3:19:35 PM] - PLOTTED BY SGEIGER [1/29/2009 1:17:49 PM]