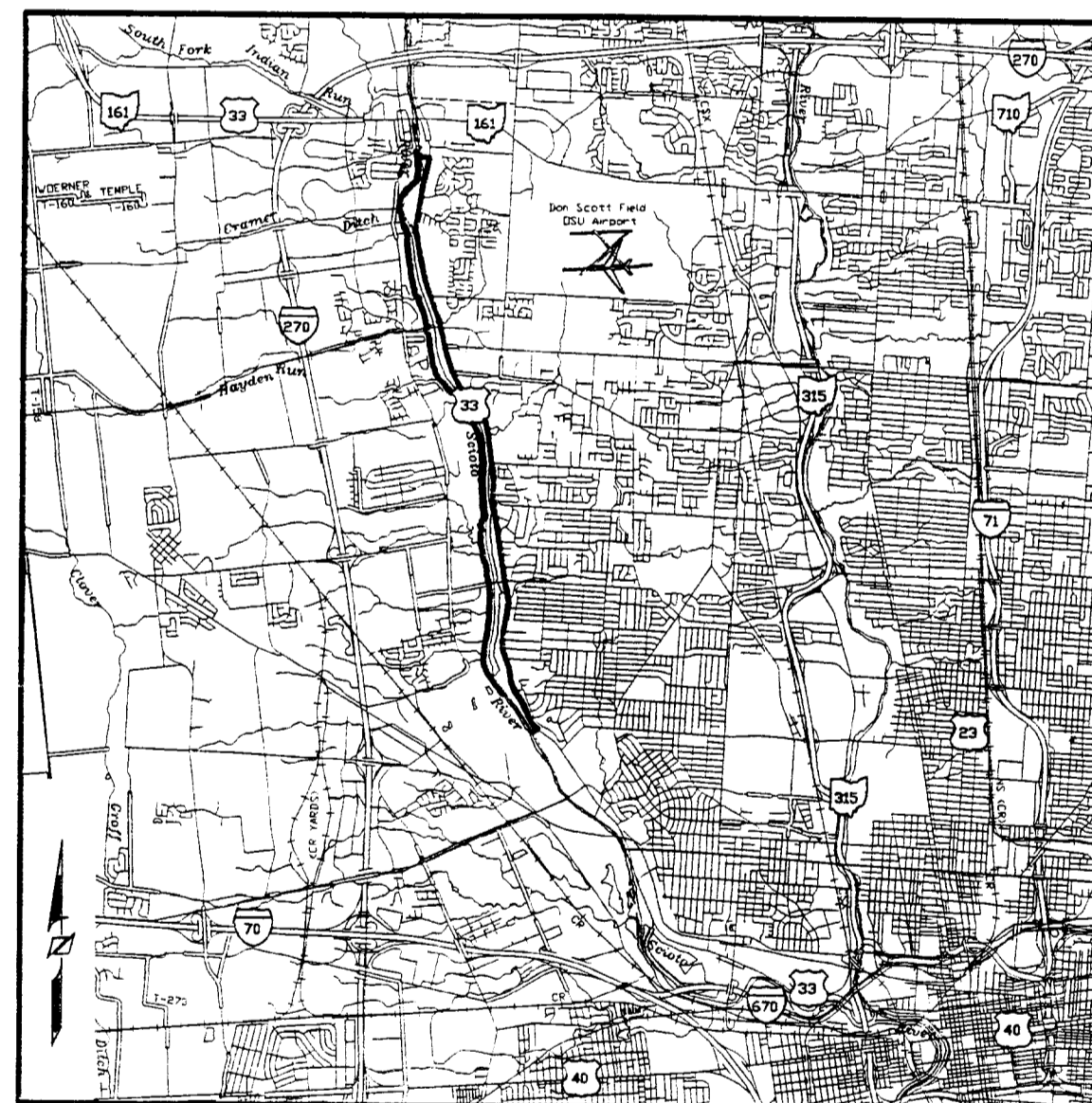


CITY OF COLUMBUS  
 DEPARTMENT OF PUBLIC UTILITIES  
 DIVISION OF WATER

# GRIGGS RESERVOIR BOUNDARY SURVEY

VIRGINIA MILITARY SURVEY No.'s 547, 1406, 4854, 2418, 2419  
 1/4 TOWNSHIPS 4 and 1, TOWNSHIP 1, RANGE 19, UNITED STATES MILITARY LANDS  
 LOTS 1 and 2, 1/4 TOWNSHIP 2, TOWNSHIP 1, RANGE 19, UNITED STATES MILITARY LANDS  
 LOTS 15,14,13,12, 1/4 TOWNSHIP 3, TOWNSHIP 2, RANGE 19, UNITED STATES MILITARY LANDS

MARCH, 1998



VICINITY MAP  
 NOT TO SCALE



## TABLE OF CONTENTS

TITLE SHEET	1
SITE MAP	2
PLAN SHEET	3-17
RECORD INFORMATION (ADJOINERS)	18-20
RECORD INFORMATION (CITY)	21

### LEGEND

■ CMF	CONCRETE MONUMENT FOUND
■ CMS	CONCRETE MONUMENT SET
● IPF	IRON PIN FOUND
● IPS	IRON PIN SET
● RRSS	RAILROAD SPIKE SET
■ FCE #2254	FRANKLIN COUNTY ENGINEER'S MONUMENT BOX FOUND
—	PROPERTY LINE MARKER
—	EXISTING ENCROACHMENT

### NOTES:

1. ALL EDGE OF WATER FOR THE SCIOTO RIVER WAS TAKEN FROM FRANKLIN COUNTY AUDITOR'S GIS MAPPING.
2. THE STATE PLANE COORDINATES FOR THIS PROJECT WERE COMPUTED USING THE SPC OHIO SOUTH ZONE WITH A PROJECT ADJUSTMENT FACTOR OF 1.00002853.

### BASIS OF BEARINGS

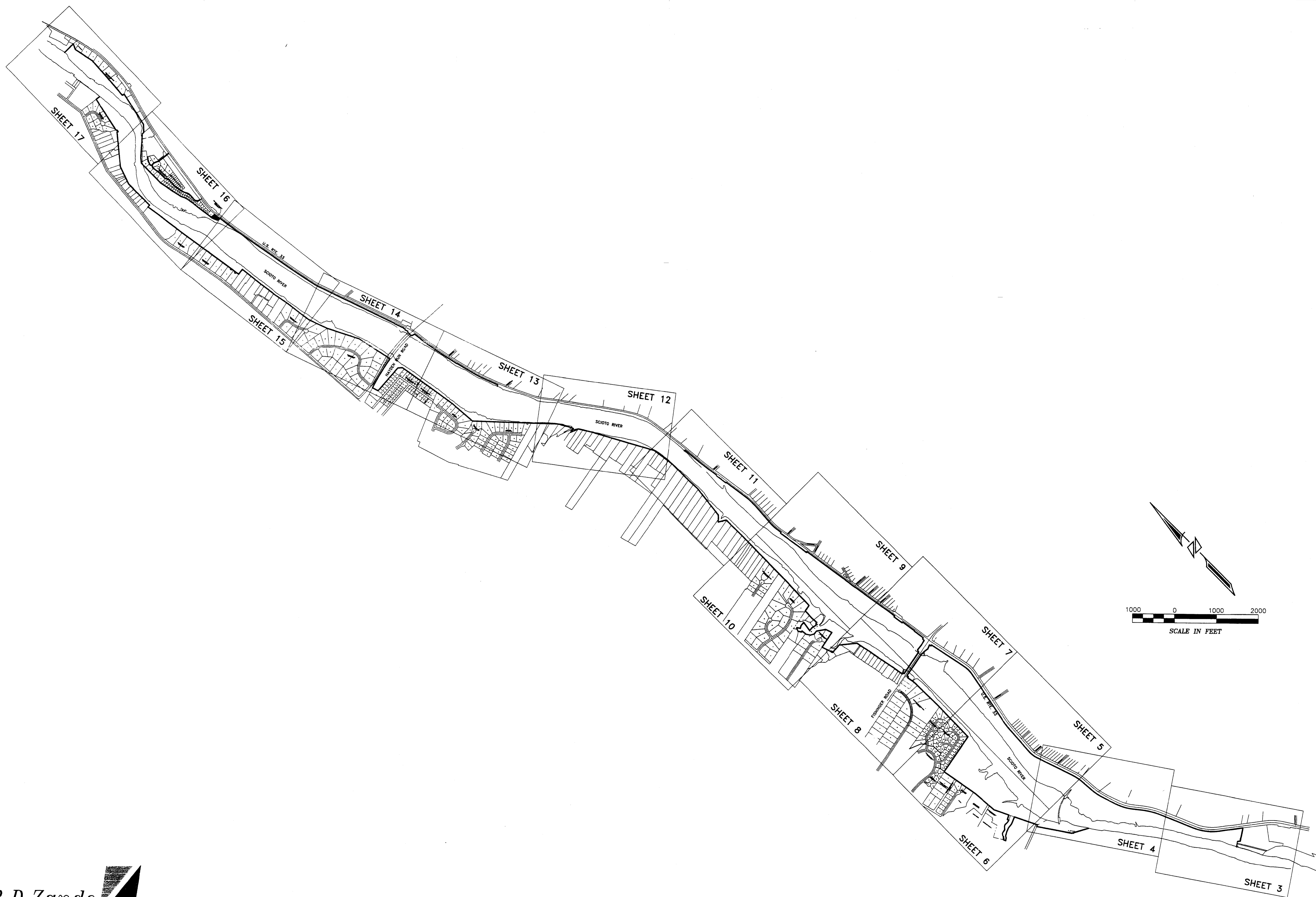
THE BEARING SHOWN HEREON ARE BASED ON THE GRID BEARING OF S 16°00'00" W BETWEEN FRANKLIN COUNTY ENGINEER'S MONUMENTS NAMED FRANK'S AND DAVIDSON AS DETERMINED BY A GPS NETWORK OF FIELD OBSERVATIONS PERFORMED IN OCTOBER, 1997.

R.D.Zande  
 & Associates

Prepared By:  
 R. D. Zande & Associates, Inc.  
 1237 Dublin Road  
 Columbus, Ohio 43215

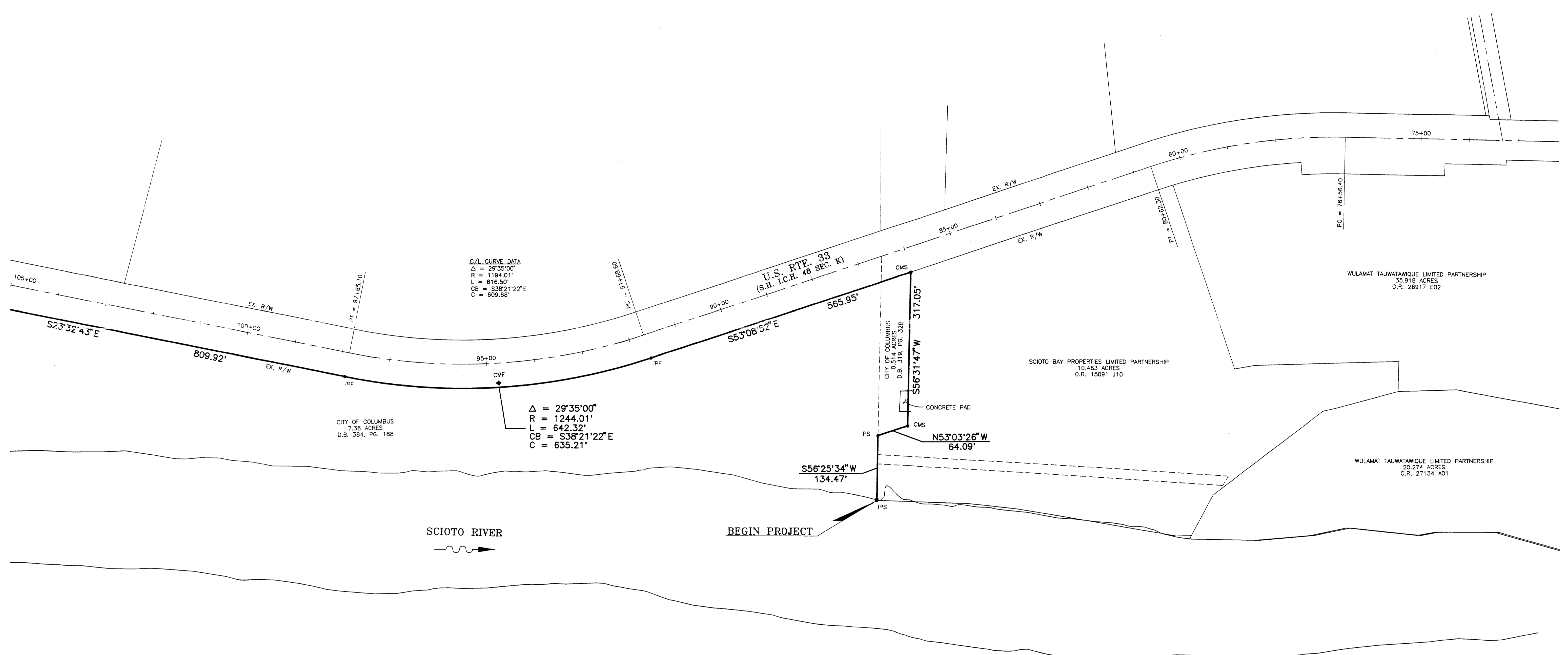


James M. Pearce  
 Registered Surveyor No. 7840  
 Date 3/14/98



R.D.Zande  
& Associates

SEE SHEET 4 OF 21



CITY OF COLUMBUS  
7.38 ACRES  
D.B. 384, PG. 188

C/L CURVE DATA  
Δ = 29°35'00"  
R = 1194.01'  
L = 616.50'  
CB = 536°21'22\"/>

Δ = 29°35'00"  
R = 1244.01'  
L = 642.32'  
CB = S38°21'22\"/>

CITY OF COLUMBUS  
0.514 ACRES  
D.B. 318, PG. 328

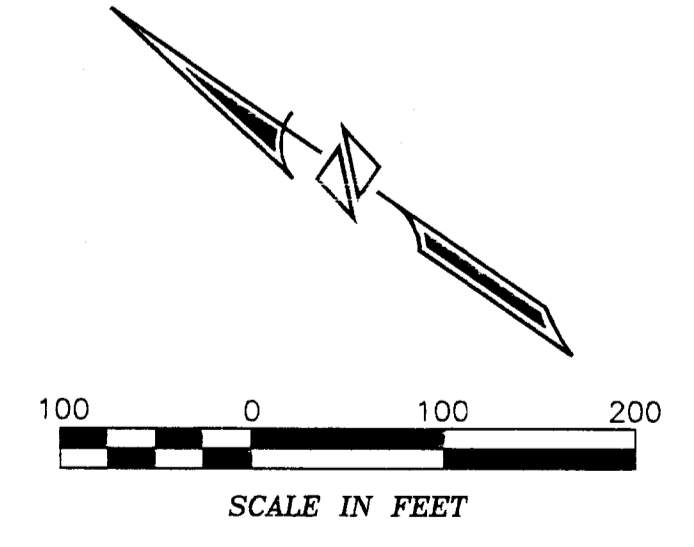
SCIOTO BAY PROPERTIES LIMITED PARTNERSHIP  
10.463 ACRES  
O.R. 15091 J10

WULAMAT TALUWATAWIQUE LIMITED PARTNERSHIP  
35.918 ACRES  
O.R. 28917 E02

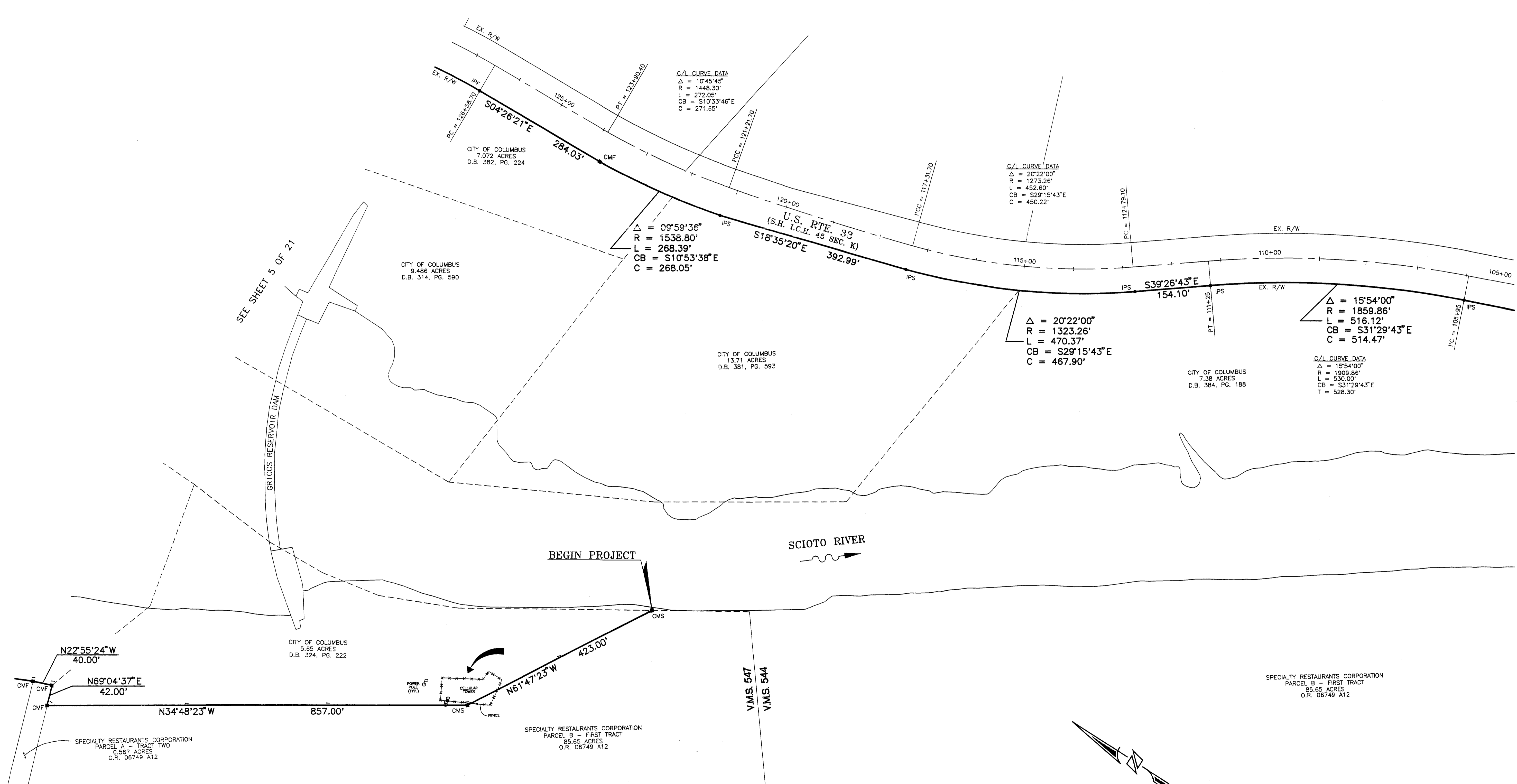
WULAMAT TALUWATAWIQUE LIMITED PARTNERSHIP  
20.274 ACRES  
O.R. 27134 A01

SCIOTO RIVER

BEGIN PROJECT



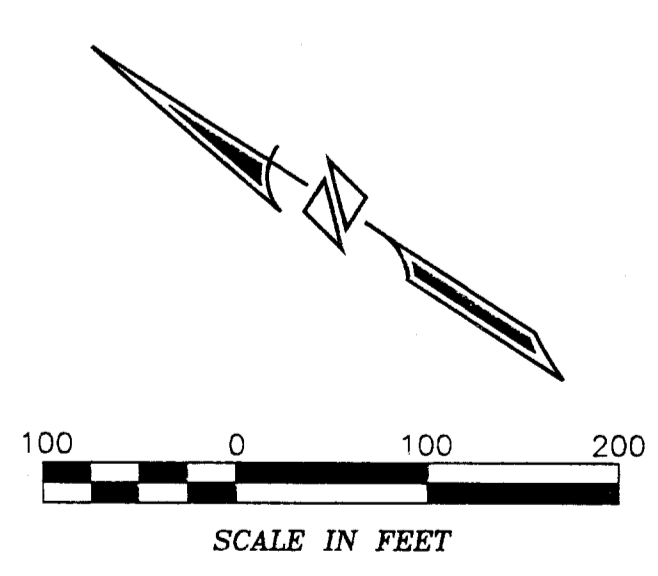
R.D.Zande  
& Associates



SEE SHEET 5 OF 21

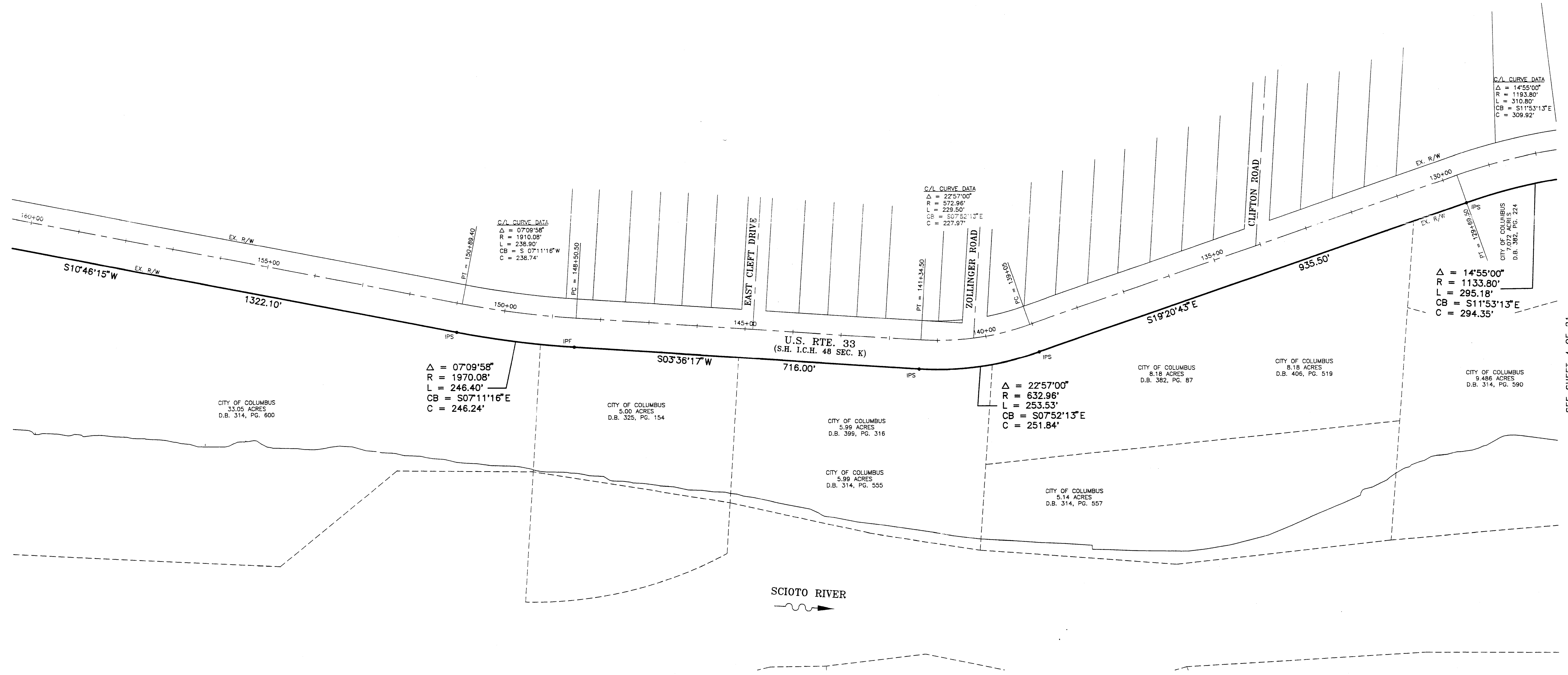
SEE SHEET 3 OF 21

R.D.Zande  
& Associates

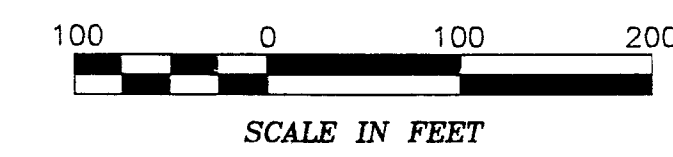


SEE SHEET 7 OF 21

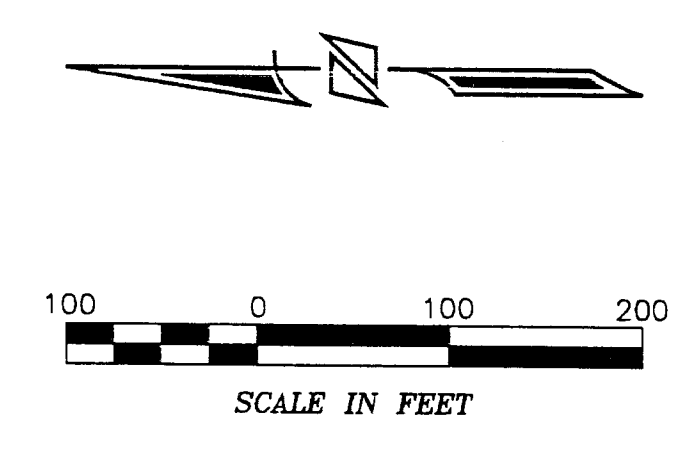
SEE SHEET 4 OF 21



SEE SHEET 6 OF 21



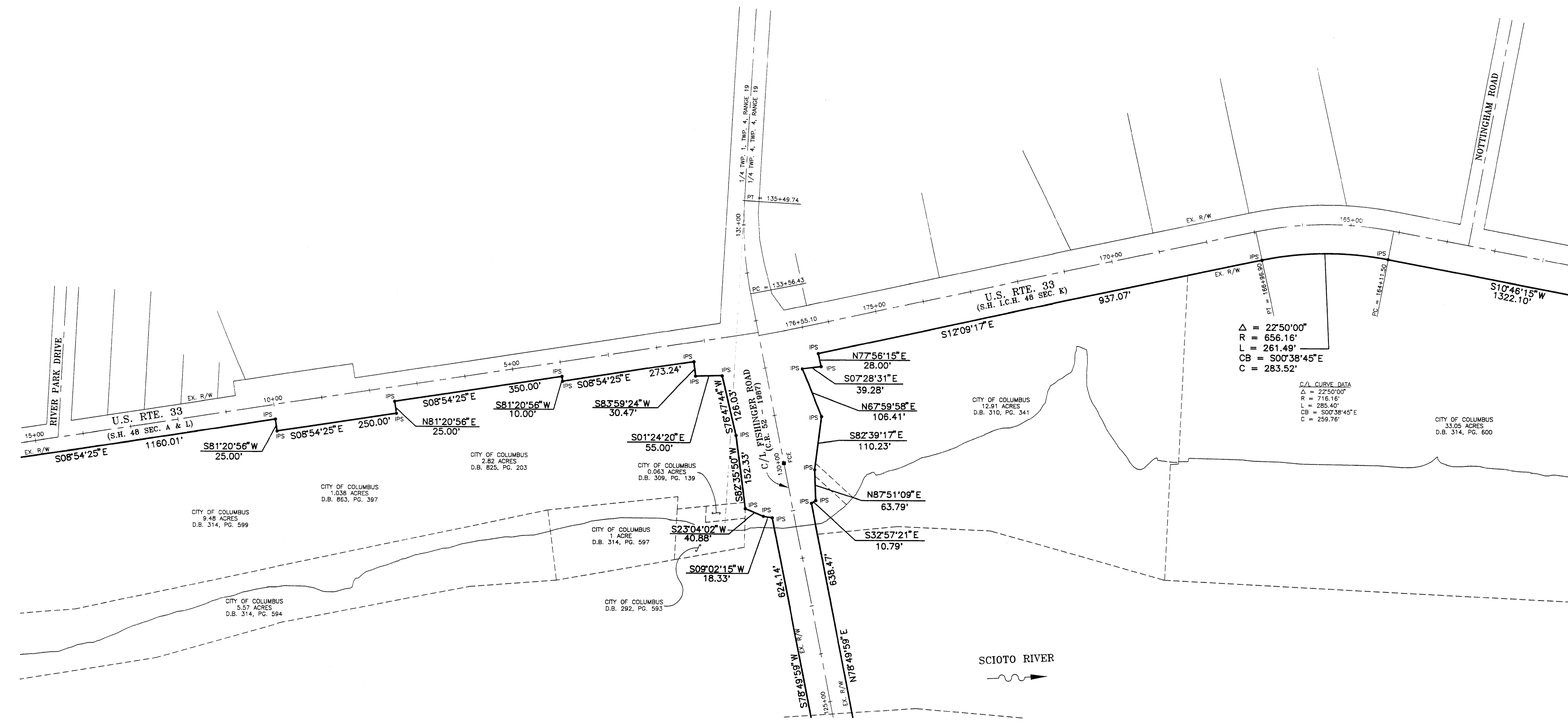
**R.D. Zande**  
 & Associates



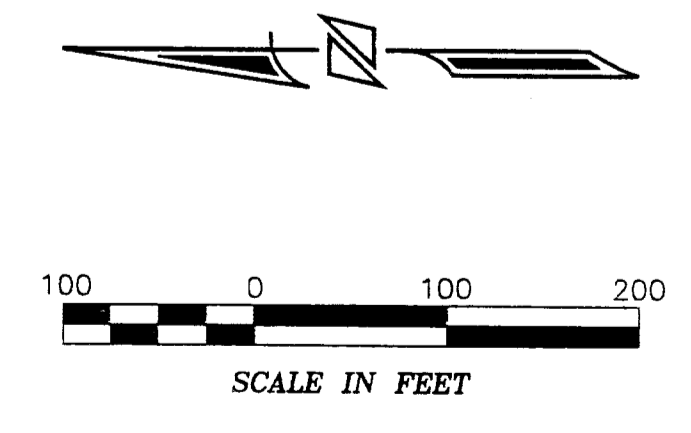
SEE SHEET 9 OF 21

SEE SHEET 5 OF 21

SEE SHEET 8 OF 21



**R.D.Zande**  
 & Associates



SCIOTO RIVER

SEE SHEET 7 OF 21

CITY OF COLUMBUS  
17.57 ACRES  
D.B. 378, PG. 503

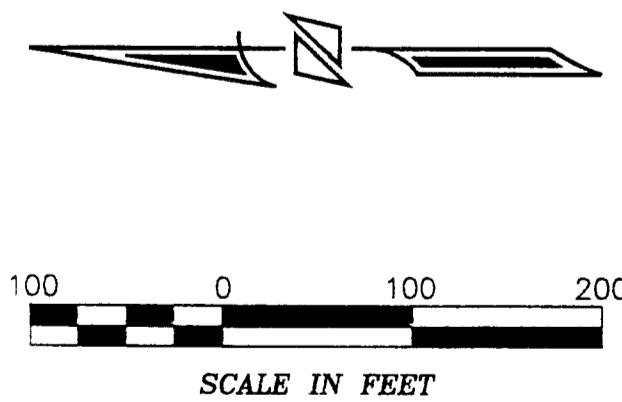
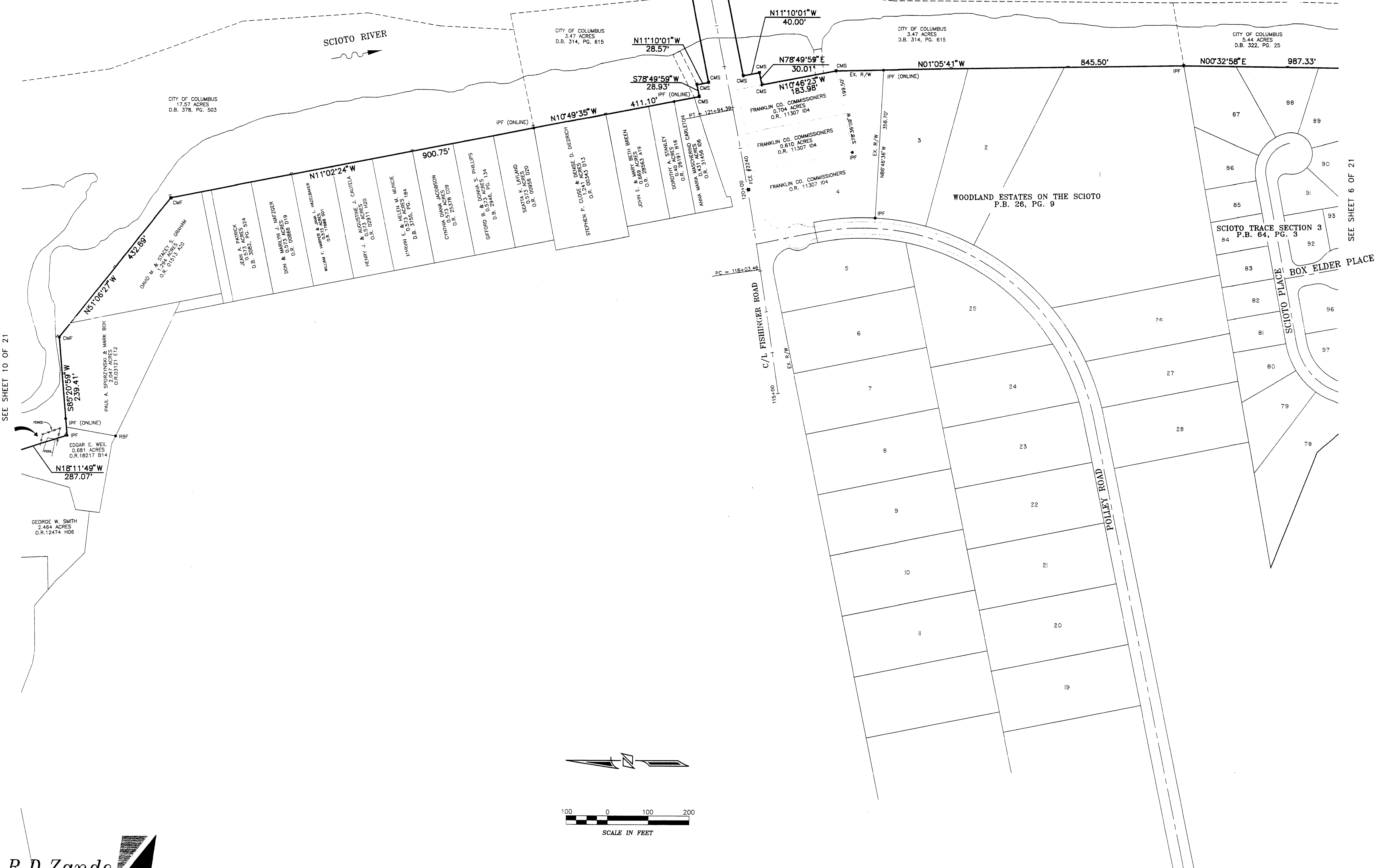
CITY OF COLUMBUS  
3.42 ACRES  
D.B. 314, PG. 615

CITY OF COLUMBUS  
3.47 ACRES  
D.B. 314, PG. 615

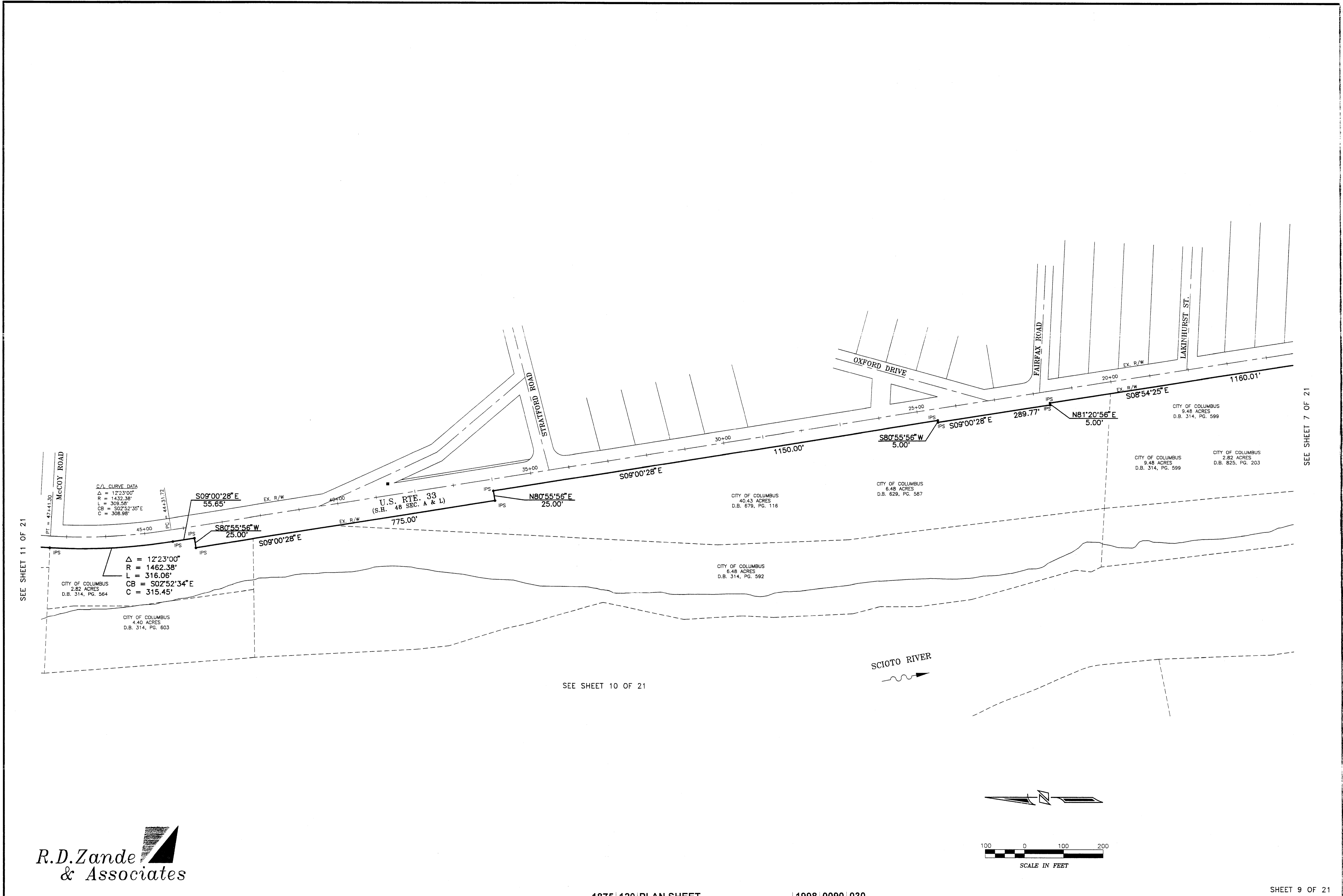
CITY OF COLUMBUS  
5.44 ACRES  
D.B. 322, PG. 25

SEE SHEET 10 OF 21

SEE SHEET 6 OF 21



**R.D.Zande**  
& Associates



R.D.Zande  
 & Associates

SEE SHEET 9 OF 21

SCIOTO RIVER

CITY OF COLUMBUS  
16.96 ACRES  
D.B. 1050, PG. 298

CITY OF COLUMBUS  
4.58 ACRES

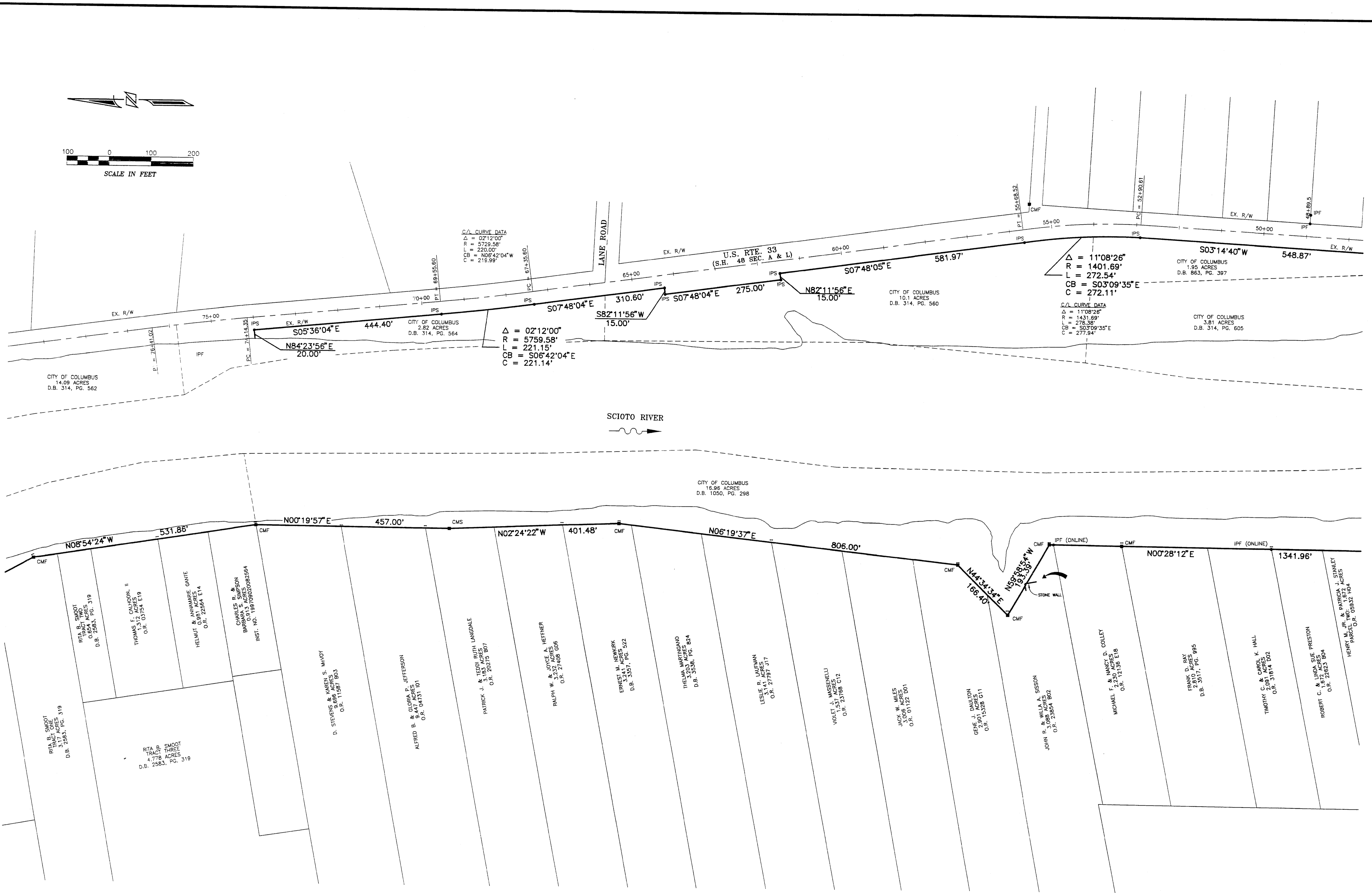
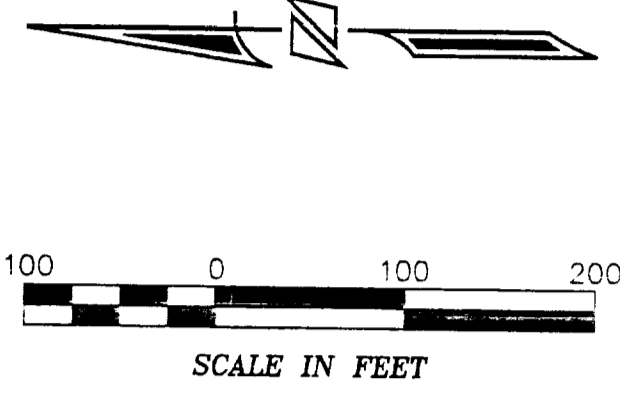
CITY OF COLUMBUS  
11.14 ACRES  
D.B. 314, PG. 609



SEE SHEET 11 OF 21

SEE SHEET 8 OF 21

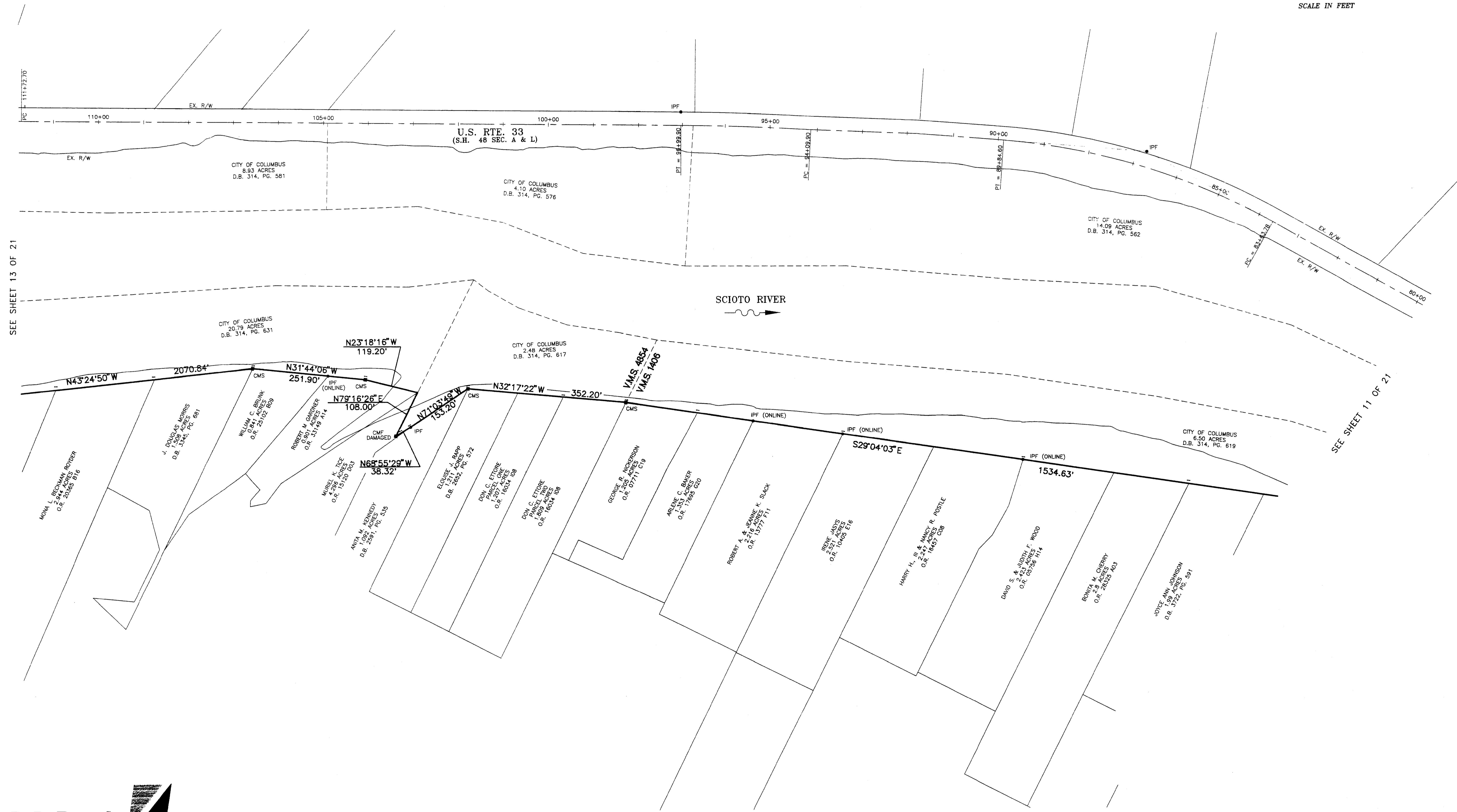
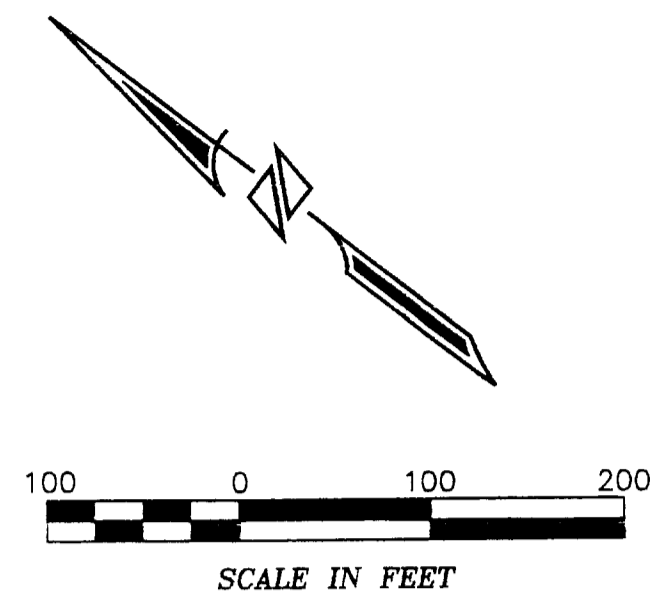
R.D.Zande  
& Associates



SEE SHEET 12 OF 21

SEE SHEETS 9 & 10 OF 21

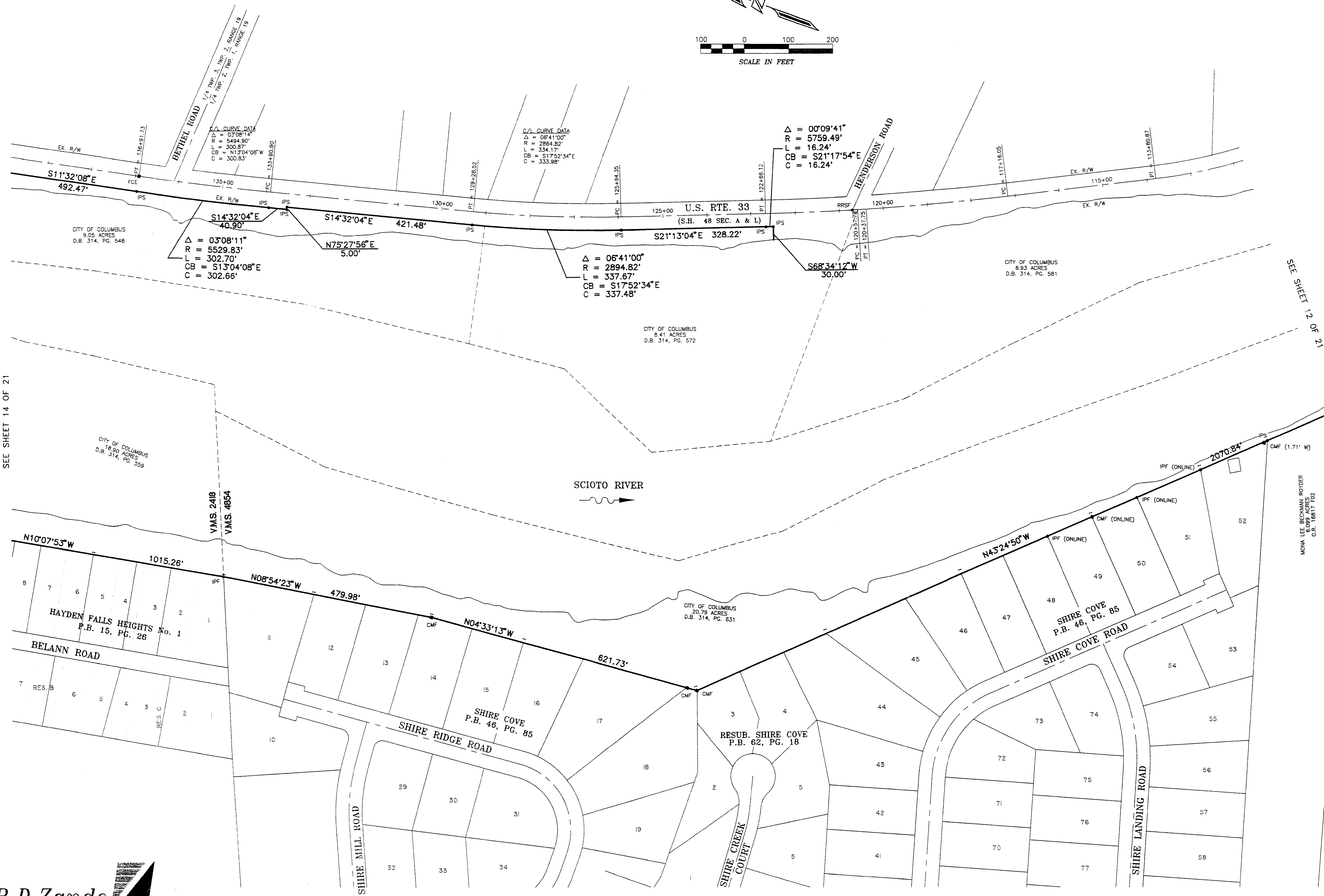
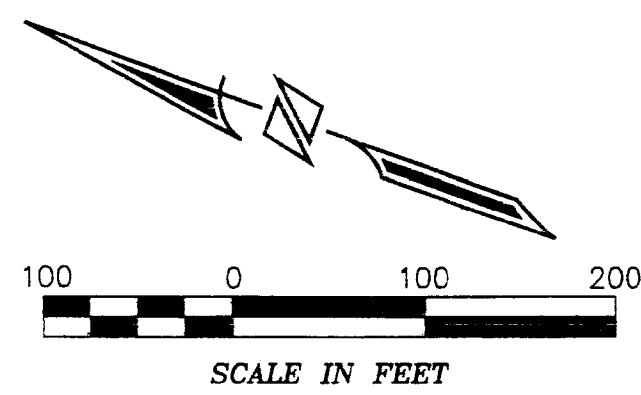




SEE SHEET 13 OF 21

SEE SHEET 11 OF 21

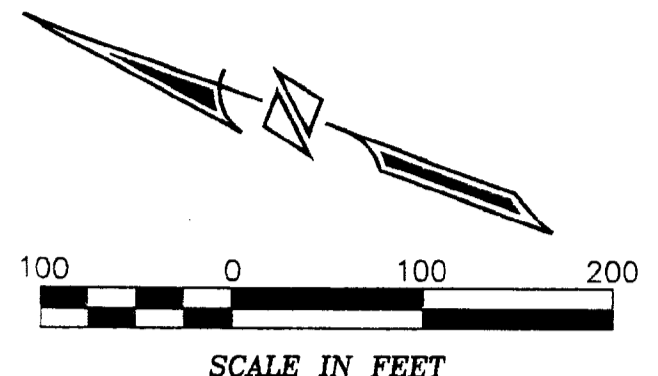
R.D.Zande  
& Associates



SEE SHEET 14 OF 21

SEE SHEET 12 OF 21

**R.D.Zande & Associates**



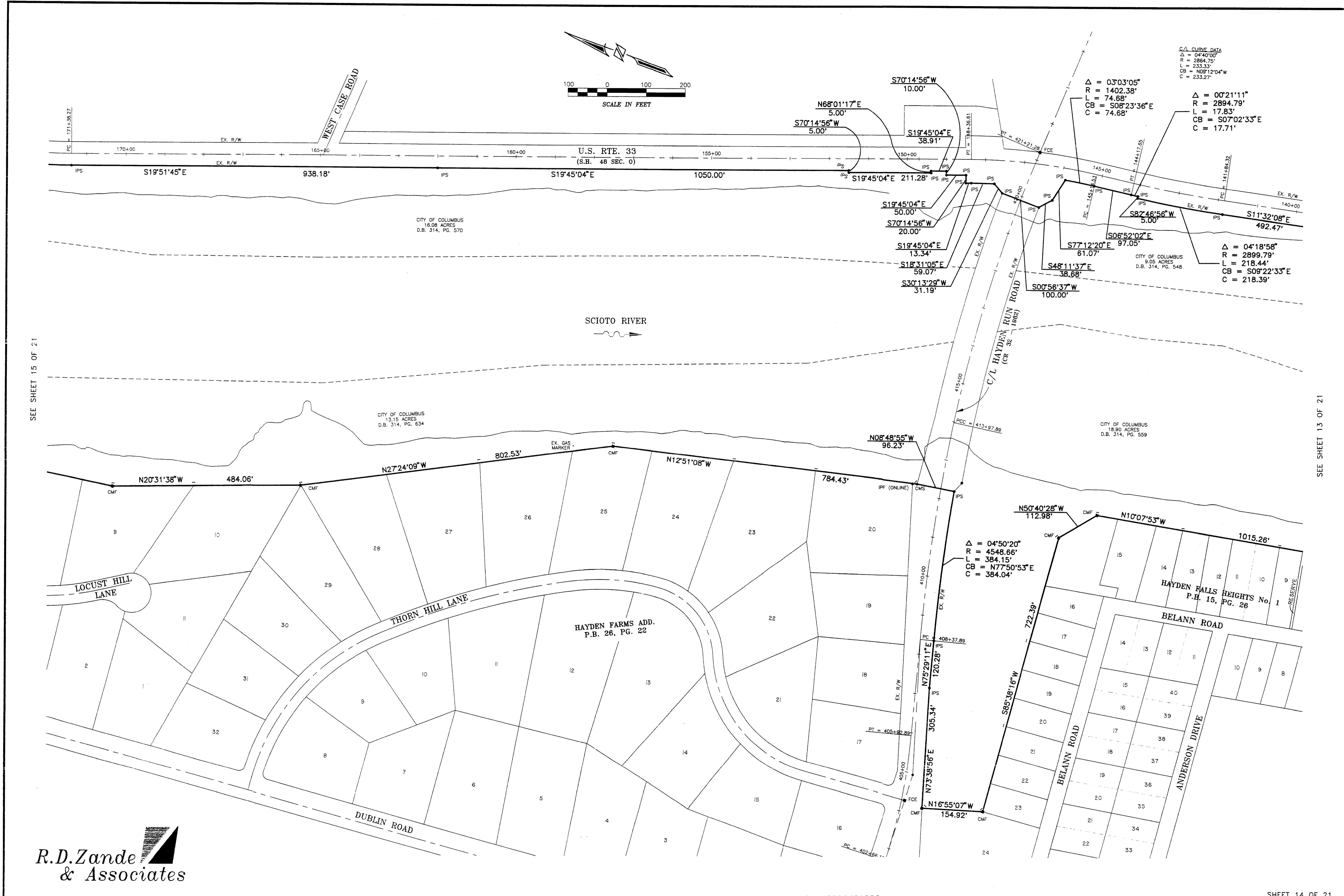
C/L CURVE DATA  
 $\Delta = 04^{\circ}40'00''$   
 $R = 2864.75'$   
 $L = 233.33'$   
 $CB = N09^{\circ}12'04''W$   
 $C = 233.27'$

$\Delta = 03^{\circ}03'05''$   
 $R = 1402.38'$   
 $L = 74.68'$   
 $CB = S08^{\circ}23'36''E$   
 $C = 74.68'$

$\Delta = 00^{\circ}21'11''$   
 $R = 2894.79'$   
 $L = 17.83'$   
 $CB = S07^{\circ}02'33''E$   
 $C = 17.71'$

$\Delta = 04^{\circ}18'58''$   
 $R = 2899.79'$   
 $L = 218.44'$   
 $CB = S09^{\circ}22'33''E$   
 $C = 218.39'$

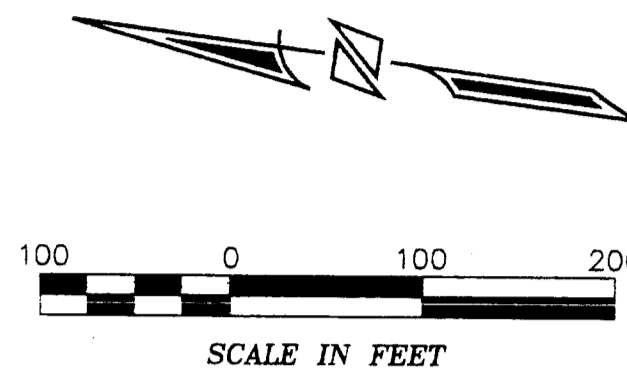
$\Delta = 04^{\circ}50'20''$   
 $R = 4548.66'$   
 $L = 384.15'$   
 $CB = N77^{\circ}50'53''E$   
 $C = 384.04'$



SEE SHEET 15 OF 21

SEE SHEET 13 OF 21

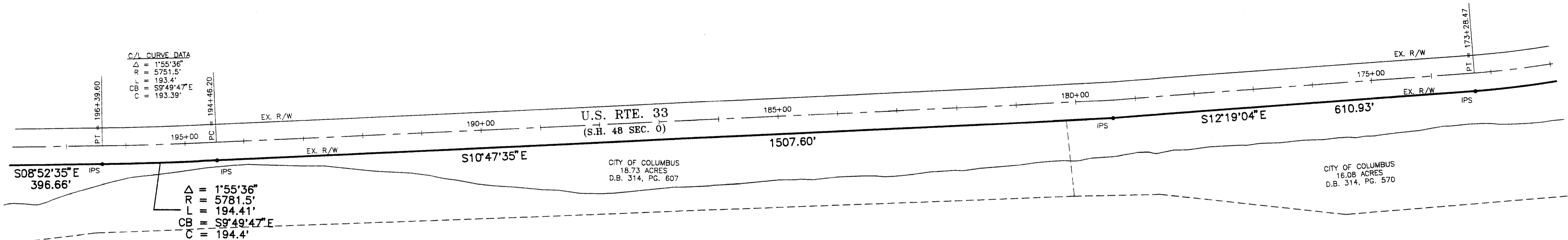
**R.D.Zande & Associates**



**ΔΔ CURVE DATA**

Δ = 155°36"  
 R = 5781.5'  
 CB = 194.4'  
 C = 194.4'

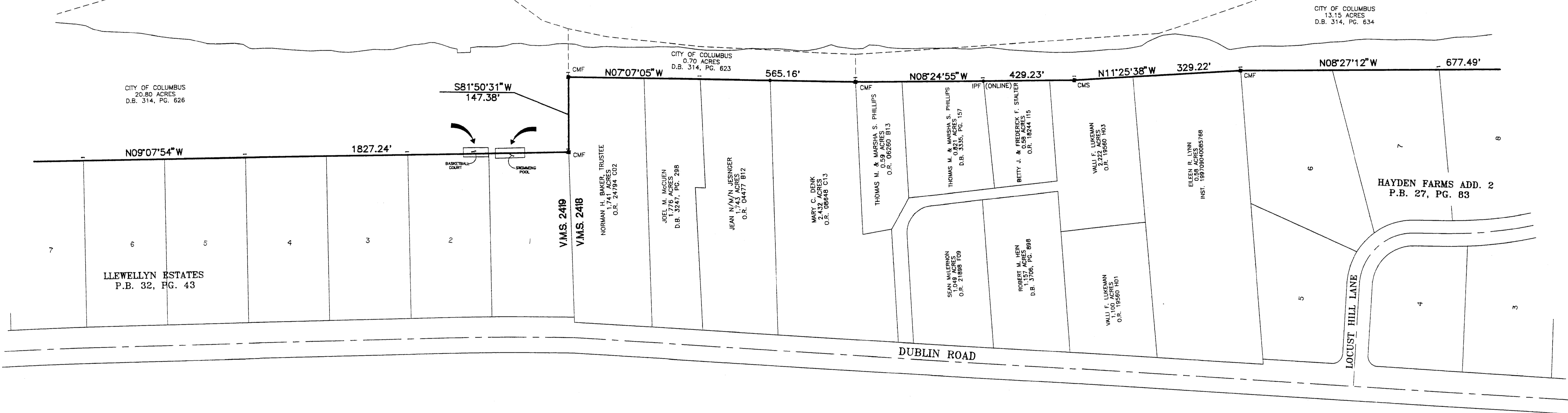
Δ = 155°36"  
 R = 5781.5'  
 L = 194.41'  
 CB = 194.47'E  
 C = 194.4'



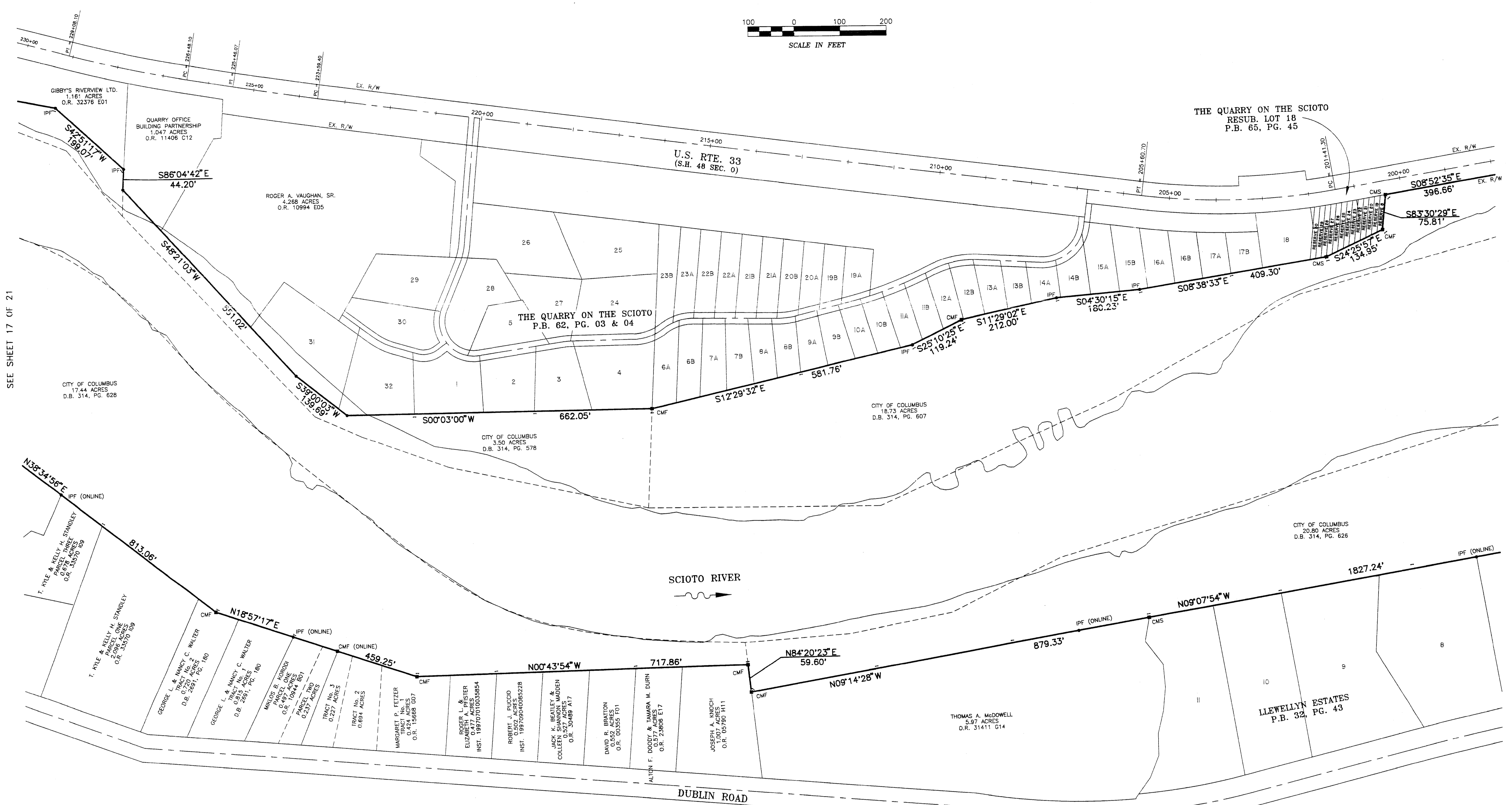
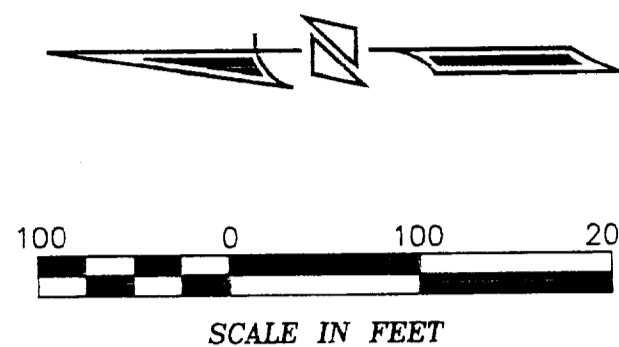
SCIOTO RIVER

SEE SHEET 16 OF 21

SEE SHEET 14 OF 21



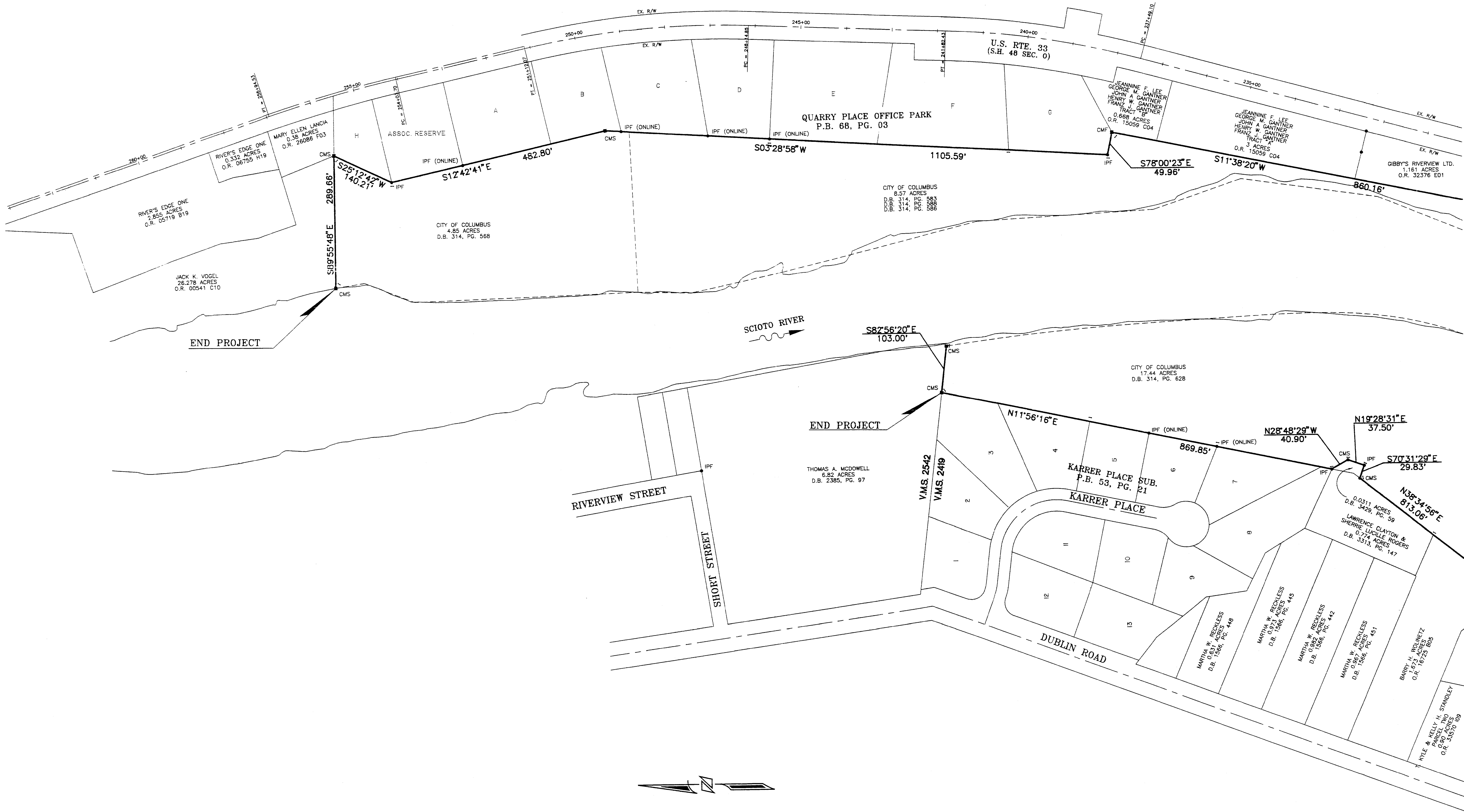
**R.D.Zande**  
 & Associates



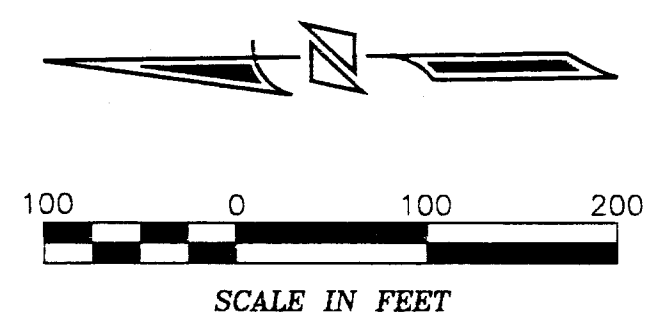
SEE SHEET 17 OF 21

SEE SHEET 15 OF 21

**R.D.Zande**  
& Associates



SEE SHEET 16 OF 21



**R.D.Zande & Associates**

**RECORD INFORMATION  
ALPHABETICAL LISTING OF ADJACENT LANDOWNERS**

LANDOWNER NAME	PARCEL NUMBER	ACREAGE OR LOT No.	DEED REFERENCE	SHEET REFERENCE
Agin, Karin A.	201-000021	Lot 24, Hayden Falls Heights	O.R. 33334 A15	14 of 21
Albanese, Peter A.	201-000009	Lot 9, Hayden Falls Heights	O.R. 23002 A04	14 of 21
Baker, Arlene C.	200-000418	1.353 Ac.	O.R. 17695 G20	12 of 21
Baker, Norman H., Tr. & Marie R. Bosca	273-001722	1.741 Ac.	O.R. 24794 C02	15 of 21
Baldwin, Roy D. & Carol J. Long	590-198744	Lot 15A, The Quarry on the Scioto	O.R. 32992 I14	16 of 21
Baldwin, Roy D. & Carol J. Long	590-198745	Lot 15B, The Quarry on the Scioto	O.R. 32992 I14	16 of 21
Balyeat, James R. & Judith A. Co-Tr.	560-181728	Lot 8, Walden North Condominium	O.R. 25698 G03	6 of 21
Balyeat, James R. & Judith A. Co-Tr.	560-181729	Lot 9, Walden North Condominium	O.R. 25698 G03	6 of 21
Beatley, Jack K. & Colleen S.	270-000325	0.527 Ac.	O.R. 30489 A17	16 of 21
Beilharz, Joyce H.	273-001176	Lot 4, Karrier Place	Inst. 199801220015164	17 of 21
Beilharz, Joyce H.	273-001175	Lot 3, Karrier Place	Inst. 199801220015164	17 of 21
Bell, Larry E. & Gayle A.	590-198736	Lot 11A, The Quarry on the Scioto	O.R. 25376 D12	16 of 21
Bitonte, Joseph L. & Cosma M.	050-006640	1.672 Ac.	D.B. 2500, Pg. 349	10 of 21
Bitonte, Joseph L. & Cosma M.	050-006649	0.836 Ac.	D.B. 2500, Pg. 346	10 of 21
Borror, David S.	273-001752	Lot 20, Hayden Farms Add.	O.R. 25081 B06	14 of 21
Borror, Douglas D. & Olga L.	273-001778	Lot 2, Llewellyn Estates	O.R. 01637 A14	15 of 21
Bowers, James D. & Agnes W.	590-206478	Res. 29, Resub. Lot 18, The Quarry on the Scioto	O.R. 13245 E20	16 of 21
Brannon, Carol B.	050-003082	Lot 15, Shire Cove	O.R. 15308 J18	13 of 21
Bratton, David R.	270-000295	0.552 Ac.	O.R. 00355 F01	16 of 21
Breen, John E. & Mary Beth	200-000236	0.669 Ac.	O.R. 28563 A19	8 of 21
Brehmer, Barbara G.	050-003080	Lot 13, Shire Cove	O.R. 02609 H06	13 of 21
Brelsford, Loren L. & Joan L.	273-001759	Lot 27, Hayden Farms Add.	O.R. 03030 C03	14 of 21
Brewer, Marilyn	590-198722	Lot 2, The Quarry on the Scioto	O.R. 23648 F16	16 of 21
Brunk, William C.	200-000271	0.841 Ac.	O.R. 25102 B09	12 of 21
Buk, John A. & Sherry J.	560-203654	Lot 126, Scioto Trace Section 3	O.R. 22017 J17	6 of 21
Butts, Sherman R.	201-000008	Lot 8, Hayden Falls Heights	D.B. 3261, Pg. 23	13 of 21
Calhoun, Thomas F., II	200-001048	1.312 Ac.	O.R. 03754 E19	11 of 21
Call, Charles J.	200-000061	Lot 12, Chanticleer	D.B. 3666, Pg. 335	10 of 21
Carlton, Anna Maria Mascherino	200-000593	0.431 Ac.	O.R. 31456 I06	8 of 21
Caultela, Henry J. & Augustine J.	200-000507	0.573 Ac.	O.R. 02911 H20	8 of 21
Cherry, Bonita M.	200-000436	2.8 Ac.	O.R. 28325 A03	12 of 21
Clarkin, William O. & Joan E.	050-003116	Lot 49, Shire Cove	O.R. 28274 J14	13 of 21
Clarkson, Peter M. & E. Linda	050-006559	Lot 12, Scioto Run	O.R. 24058 E12	10 of 21
Close, George E. & Patricia E.	560-203653	Lot 125, Scioto Trace Section 3	O.R. 12570 C08	6 of 21
Close, Stephen P. & Denise D. Dierich	200-000071	1.241 Ac.	O.R. 00343 D13	8 of 21
Colley, Michael F. & Nancy D.	050-006652	2.230 Ac.	O.R. 12136 E18	11 of 21
Collins, Elmer C. & Mary A.	273-001177	Lot 5, Karrier Place	O.R. 18233 G19	17 of 21
Conrad, Blaine H., Jr. & Patricia L.	200-001273	Lot 9, Stoney Bridge	D.B. 3233, Pg. 650	10 of 21
Cook, Peg B.	590-198764	Lot 31, The Quarry on the Scioto	O.R. 17282 C18	16 of 21
Coanfare, Robert H., Jr. & Judith K.	560-203656	Lot 128, Scioto Trace Section 3	O.R. 16799 J11	6 of 21
Copeland, John, Jr. & Rhonda L.	590-206466	Lot 18, The Quarry on the Scioto	O.R. 20888 G10	16 of 21
Coughlin, Michael A.	200-002976	0.343 Ac.	O.R. 31261 A04	10 of 21
Cox, James A. & Yvette A.	560-203655	Lot 127, Scioto Trace Section 3	O.R. 15425 F16	6 of 21
Crane, Robert S., III	273-007000	Lot 8 & Lot 9, Llewellyn Estates	O.R. 23328 B16	16 of 21
Crane, Robert S., III	273-007001	Lot 10, Llewellyn Estates	O.R. 23328 B16	16 of 21
Crooks, Robert W. & Christia B.	201-000007	Lot 6 & Lot 7 & E 1/2 Res., Hayden Falls Heights	Inst. 199708190073973	13 of 21
Daulton, Gene J.	200-000536	2.901 Ac.	O.R. 15328 G11	11 of 21
Denk, Mary C.	273-001725	2.432 Ac.	O.R. 08648 C13	15 of 21
Dewolf, Ronald E. & Gloria I.	560-203649	Lot 121, Scioto Trace Section 3	O.R. 10146 D14	6 of 21
Dickson, Michael H. & Alice G.	201-000012	Lot 14, Hayden Falls Heights	D.B. 2993, Pg. 256	14 of 21

LANDOWNER NAME	PARCEL NUMBER	ACREAGE OR LOT No.	DEED REFERENCE	SHEET REFERENCE
Distefano, Kevin J. & Heath M.	273-001761	Lot 29, Hayden Farms Add.	O.R. 16628 D01	14 of 21
Doody, Alton F. & Tamara M. Durn	270-000311	0.577 Ac.	O.R. 23806 E17	16 of 21
Edwards, Jeffrey W. & Lisa A.	273-007002	Lot 11, Llewellyn Estates	O.R. 23328 B14	16 of 21
Elliott, Dorothy K.	590-198740	Lot 13A, The Quarry on the Scioto	O.R. 12735 B05	16 of 21
Ettore, Don C.	200-000358	3.016 Ac.	O.R. 16034 I08	12 of 21
Faust, Donald W. & Kathleen M.	590-206469	Res. 20, Resub. Lot 18, The Quarry on the Scioto	O.R. 13245 E18	16 of 21
Fetzer, Margaret P.	270-000290	1.180 Ac.	O.R. 12668 G07	16 of 21
Fink, Sandra S.	590-198742	Lot 14A, The Quarry on the Scioto	O.R. 28749 C14	16 of 21
Fink, Sandra S.	590-198743	Lot 14B, The Quarry on the Scioto	O.R. 28749 C14	16 of 21
Fittan, Bernard J. & Lori J.	560-203659	Lot 131, Scioto Trace Section 3	O.R. 15572 E19	6 of 21
Floetker, Bernard	560-203650	Lot 122, Scioto Trace Section 3	O.R. 30219 J11	6 of 21
Franklin County Commissioners	200-000784	Lot 4, Woodland Estates on the Scioto	O.R. 11307 I04	8 of 21
Franklin County Commissioners	200-000199	0.704 Ac.	O.R. 11307 I04	8 of 21
Franklin County Commissioners	200-000828	0.610 Ac.	O.R. 11307 I04	8 of 21
Freiheit, Harold R. & Mary L.	201-000060	Lot 5 & part Lot 4, Hayden Falls Heights	D.B. 2745, Pg. 282	13 of 21
Furlong, James H. & Suzanne O.	590-198734	Lot 10A, The Quarry on the Scioto	O.R. 28362 H04	16 of 21
Gajoch, Michelle Trueman	200-002031	1.18045 Ac.	O.R. 14395 E10	10 of 21
Gante, Helmut & Annemarie	200-000830	0.981 Ac.	O.R. 22564 E14	11 of 21
Gantner, George M. Et Al 5	212-000458	Tract B, 0.668 Ac.	O.R. 15059 C04	17 of 21
Gantner, George M. Et Al 5	212-000168	Tract A, 3 Ac.	O.R. 15059 C04	17 of 21
Gantner, Helen I. & Robert W.	273-001756	Lot 24, Hayden Farms Add.	D.B. 1821, Pg. 415	14 of 21
Gardner, Robert M.	200-000489	0.901 Ac.	O.R. 33149 A14	12 of 21
Garrigan, Kerry A. & Matthias B. III	590-206474	Res. 25, Resub. Lot 18, The Quarry on the Scioto	O.R. 27963 B03	16 of 21
Garrison, James P. & Peggy	273-001770	Lot 6, Hayden Farms Add. 2	O.R. 19000 G10	15 of 21
Gebhart, Barbara E.	050-003247	Lot 3, Shire Cove Resub.	O.R. 29374 F11	13 of 21
George, Allan E. & Jane E.	273-001757	Lot 25, Hayden Farms Add.	D.B. 3656, Pg. 742	14 of 21
Gerace, Phyllis A.	273-001779	Lot 3, Llewellyn Estates	O.R. 11227 G13	15 of 21
Gibby's Riverview LTD	010-231812	1.161 Ac.	O.R. 32376 E01	16 of 21
Gorman, Carol J.	590-198739	Lot 12B, The Quarry on the Scioto	O.R. 19631 C18	16 of 21
Graham, David M. & Stacey S.	200-000482	1.294 Ac.	O.R. 01513 A20	8 of 21
Haid, David E.	273-001773	Lot 9, Hayden Farms Add. 2	O.R. 10002 G17	14 of 21
Hall, Timothy C. & Carol K. Hall	050-006653	2.091 Ac.	O.R. 31814 D02	11 of 21
Haney, Marcia L.	560-203658	Lot 130, Scioto Trace Section 3	O.R. 19370 A11	6 of 21
Hanneman, Regina B.	590-198721	Lot 1, The Quarry on the Scioto	O.R. 18541 B14	16 of 21
Harper William F. & Jana L. Hazelbaker	200-000506	0.573 Ac.	O.R. 17886 G01	8 of 21
Hausmann, Albert F. & Barbara A. Churchhill	590-198738	Lot 12A, The Quarry on the Scioto	O.R. 05694 H11	16 of 21
Heartland Bank	590-198730	Lot 8A & 8B, The Quarry on the Scioto	O.R. 33323 D20	16 of 21
Heffner, Ralph W. & Joyce A.	200-000404	3.232 Ac.	O.R. 27408 G06	11 of 21
Henry, Leland W. & Marilyn	215-000980	Lot F, Quarry Place Office Park	O.R. 22614 C07	17 of 21
Horne, Stephen G. & Christine M.	273-001178	Lot 6, Karrier Place	D.B. 30988 J20	17 of 21
Hoyt, Helen A.	050-003119	Lot 52, Shire Cove	O.R. 21420 J03	13 of 21
Hudson, Daniel W. & Ivonne A.	560-203652	Lot 124, Scioto Trace Section 3	Inst. 199712190171648	6 of 21
Iacono, Thomas F. & Mary H.	273-001782	Lot 6, Llewellyn Estates	D.B. 2776, Pg. 113	15 of 21
Iacono, Thomas F. & Mary H.	273-001783	Lot 7, Llewellyn Estates	D.B. 3344, Pg. 601	15 of 21
Iacovetta, Rose E. Tr.	200-002704	0.407 Ac.	O.R. 33954 A01	10 of 21
Ill Star Investments Inc.	590-206467	Res. 5, Resub. Lot 18, The Quarry on the Scioto	O.R. 22561 J03	16 of 21
Jackson, Michael H.	200-001271	Lot 7, Stoney Bridge	O.R. 25020 H05	10 of 21
Jacobson, Cynthia Diana	200-000627	0.573 Ac.	O.R. 25378 C09	8 of 21
Jays, Irene	200-000198	2.521 Ac.	O.R. 10405 E16	12 of 21
Jefferson, Alfred B. & Gloria P.	200-000524	9.447 Ac.	O.R. 04731 I01	11 of 21

**R.D.Zande**  
& Associates

**RECORD INFORMATION  
ALPHABETICAL LISTING OF ADJACENT LANDOWNERS**

LANDOWNER NAME	PARCEL NUMBER	ACREAGE OR LOT No.	DEED REFERENCE	SHEET REFERENCE	LANDOWNER NAME	PARCEL NUMBER	ACREAGE OR LOT No.	DEED REFERENCE	SHEET REFERENCE
Jesinger, Jean	273-001726	1.743 Ac.	O.R. 04477 B12	15 of 21	Miller, John L. & Lanah M.	590-198732	Lot 9A, The Quarry on the Scioto	O.R. 29285 J07	16 of 21
Johnson, Joyce Ann	200-000344	1.99 Ac.	D.B. 3722, Pg. 591	12 of 21	Miller, John L. & Lanah M.	590-198733	Lot 9B, The Quarry on the Scioto	O.R. 29285 J07	16 of 21
Jones, Patricia L.	273-001760	Lot 28, Hayden Farms Add.	O.R. 06634 I16	14 of 21	Monast, James P. & Colleen S.	201-000015	Lot 17, Hayden Falls Heights	O.R. 24377 A18	14 of 21
Jones, William E. & Anne M.	050-006561	Lot 14, Scioto Run	Inst. 199710150119301	10 of 21	Monast, James P. & Colleen S.	201-000016	Lot 18 & Lot 19, Hayden Falls Heights	O.R. 24377 A18	14 of 21
Jones, William H.	050-006639	1.533 Ac.	D.B. 3761, Pg. 117	10 of 21	Morris, J. Douglas	200-000699	1.508 Ac.	D.B. 3345, Pg. 681	12 of 21
Kegler, Twilo L.	201-000006	Lot 3 & part Lot 4, Hayden Falls Heights	O.R. 23399 E20	13 of 21	Mosier, Craig H., II & Judith A.	050-003085	Lot 18, Shire Cove	O.R. 07285 I08	13 of 21
Kell, Richard D. & Mollie M.	560-203617	Lot 88, Scioto Trace Section 3	O.R. 22631 H04	8 of 21	Mueller, Ivan I. & Marianne S.	050-003248	Lot 4, Shire Cove Resub.	O.R. 06241 G13	13 of 21
Kennedy, Anita M.	200-002967	1.092 Ac.	D.B. 2561, Pg. 535	12 of 21	Muncie, Marvin E. & Helen M.	200-000329	0.573 Ac.	D.B. 3755, Pg. 184	8 of 21
Kent, Marsha G.	590-198726	Lot 6A, The Quarry on the Scioto	O.R. 2869 B18	16 of 21	Murphy, Michael A. & Janie M. Fallon-Murphy	590-206473	Res. 24, Resub. Lot 18, The Quarry on the Scioto	O.R. 23155 F18	16 of 21
Kent, Marsha G.	590-198727	Lot 6B, The Quarry on the Scioto	O.R. 2869 B18	16 of 21	Muskoff, John P. & Lynne G.	590-206476	Res. 27, Resub. Lot 18, The Quarry on the Scioto	O.R. 14227 H01	16 of 21
Kent, Robert A.	200-001796	Lot 14, Chanticleer	O.R. 03802 C15	10 of 21	Myers, Robert L. & Dorothy J.	050-003111	Lot 44, Shire Cove	O.R. 16748 H17	13 of 21
Kientz, Carolyn A.	201-000074	Lot 10 & Lot 11, Hayden Falls Heights	O.R. 02953 I07	14 of 21	Nadalin, Albert J. & Norma I.	560-203651	Lot 123, Scioto Trace Section 3	Inst. 199706110020508	6 of 21
Knight, Kevin M. & Laurie G.	590-198737	Lot 11B, The Quarry on the Scioto	O.R. 06015 B05	16 of 21	Nafzger, Don & Marilyn J.	200-000371	0.573 Ac.	O.R. 00866 D19	8 of 21
Knach, Joseph A.	270-000326	1.007 Ac.	O.R. 05790 H11	16 of 21	Nemeth, Joyce A.	050-003118	Lot 51, Shire Cove	O.R. 20884 A15	13 of 21
Koegel, Linda J.	201-000023	Reserve, Hayden Falls Heights	O.R. 06251 C06	14 of 21	Neumann, Karl William III & Elaine C.	200-000077	0.7092 Ac.	O.R. 28348 I17	10 of 21
Koff, Bernice S.	273-001781	Lot 5, Llewellyn Estates	O.R. 18067 G10	15 of 21	Newcomer, James D. & Judith E.	201-000059	Part Lot 15, Hayden Falls Heights	D.B. 3705, Pg. 835	14 of 21
Korda, Peter E. & Edith	273-001780	Lot 4, Llewellyn Estates	O.R. 24704 A14	15 of 21	Newcomer, James D. & Judith E.	201-000014	Lot 16, Hayden Falls Heights	D.B. 3705, Pg. 835	14 of 21
Korodi, Miklos B.	270-000296	0.237 Ac.	O.R. 10944 B01	16 of 21	Newkirk, Ernest M.	200-000540	3.241 Ac.	D.B. 3357, Pg. 522	11 of 21
Korodi, Miklos B.	270-000099	0.497 Ac.	O.R. 10944 B01	16 of 21	Nickerson, George R.	200-003479	1.205 Ac.	O.R. 07711 C19	12 of 21
Kreber, Mary Lou	050-003114	Lot 47, Shire Cove	O.R. 02179 B18	13 of 21	O'Brien, Robert J.	050-003081	Lot 14, Shire Cove	O.R. 09351 F01	13 of 21
Kurgis, Cathy G.	273-001755	Lot 23, Hayden Farms Add.	O.R. 30506 I15	14 of 21	Ohio Association of Chiefs of Police, Inc.	215-000975	Lot A, Quarry Place Office Park	O.R. 14098 B20	17 of 21
Lancia, Fredrick N. & Mary E.	270-001179	Lot 7, Karrier Place	D.B. 3728, Pg. 97	17 of 21	Olsen, Richard S. & Marcia I.	273-001774	Lot 10, Hayden Farms Add. 2	D.B. 3033, Pg. 459	14 of 21
Lancia, Fredrick N. & Mary E.	215-000157	0.38 Ac.	O.R. 26086 F03	17 of 21	Osmond Family LP	200-002992	0.5609 Ac.	O.R. 33864 B11	10 of 21
Lancione, David & Tara	050-003079	Lot 11, Shire Cove	O.R. 13059 C14	13 of 21	Pahre, Jeffrey D. & Patricia A.	590-206470	Res. 21, Resub. Lot 18, The Quarry on the Scioto	O.R. 13294 J03	16 of 21
Langdale, Patrick J. & Teddi Ruth	200-000541	3.183 Ac.	O.R. 20275 B07	11 of 21	Patrick, Jean A.	200-000693	0.573 Ac.	D.B. 3082, Pg. 524	8 of 21
Laufman, Leslie R.	200-000539	3.141 Ac.	O.R. 27797 J17	11 of 21	Penzone, Lynne D.	590-198748	Lot 17A, The Quarry on the Scioto	O.R. 27009 E08	16 of 21
Layland, Seatto K.	200-000610	0.573 Ac.	O.R. 00956 D20	8 of 21	Penzone, Lynne D.	590-198749	Lot 17B, The Quarry on the Scioto	O.R. 27009 E08	16 of 21
Leeseberg, Gerald S. & Jane K. Gray	590-136590	Lot 1 & 2, Hayden Falls Heights	O.R. 11555 I08	13 of 21	Pfeiffer, Paul L. & Delores L.	200-001313	Lot 6, Dolph-Hill Acres	D.B. 3751, Pg. 78	6 of 21
Lomano, Dawana L.	050-003084	Lot 17, Shire Cove	O.R. 10042 F04	13 of 21	Pfister, Roger L. & Elizabeth A.	270-000283	0.477 Ac.	Inst. 199707010035854	16 of 21
Lukeman, Valli F.	273-001720	2.222 Ac.	O.R. 19560 H03	15 of 21	Phillips, Gifford B. & Donna S.	200-000619	0.753 Ac.	D.B. 2946, Pg. 134	8 of 21
Lutz, Calvin W. & Nancy L.	560-203648	Lot 120, Scioto Trace Section 3	O.R. 10864 F18	6 of 21	Phillips, Thomas M. & Marsha S.	273-001718	0.821 Ac.	D.B. 3335, Pg. 157	15 of 21
Lynn, Eileen R.	273-001728	2.838 Ac.	Inst. 199709040085768	15 of 21	Phillips, Thomas M. & Marsha S.	273-001727	0.59 Ac.	O.R. 06260 B13	15 of 21
Lynn, Eileen R.	273-001729	2.838 Ac.	Inst. 199709040085768	15 of 21	Plickbaum, Charlene A.	590-206479	Res. 30, Resub. Lot 18, The Quarry on the Scioto	O.R. 13245 E17	16 of 21
Marble Investments	215-000976	Lot 8, Quarry Place Office Park	O.R. 30014 E02	17 of 21	Postle, Harry H., III & Nancy R.	200-000420	2.247 Ac.	O.R. 18457 C08	12 of 21
Margello, Vincent J., Jr.	050-006638	1.533 Ac.	O.R. 28733 J04	10 of 21	Preston, Robert C. & Linda S.	050-006643	1.672 Ac.	O.R. 22623 B04	11 of 21
Martingano, Thelma	200-000542	3.203 Ac.	D.B. 3538, Pg. 824	11 of 21	Price, David J.	590-198723	Lot 3, The Quarry on the Scioto	O.R. 14632 I02	16 of 21
Massenelli, Violet J.	200-000538	1.537 Ac.	O.R. 23768 C12	11 of 21	Puccio, Robert J.	270-000282	0.502 Ac.	Inst. 199709040085228	16 of 21
Motivi, Robert A.	590-198746	Lot 16A, The Quarry on the Scioto	O.R. 24330 E16	16 of 21	Purdy, Clark & Bettie	590-206475	Res. 26, Resub. Lot 18, The Quarry on the Scioto	O.R. 22619 I17	16 of 21
Motivi, Robert A.	590-198747	Lot 16B, The Quarry on the Scioto	O.R. 24330 E16	16 of 21	Quarry Office Building Partnership	590-137999	1.047 Ac.	O.R. 11406 C12	16 of 21
McCauley, William A. & Julia	201-000013	Part Lot 15, Hayden Falls Heights	D.B. 2658, Pg. 300	14 of 21	Quarry Place E., Inc.	215-000979	Lot D, Quarry Place Office Park	O.R. 11829 A02	17 of 21
McCuen, Joel M.	273-001776	1.776 Ac.	D.B. 3247, Pg. 298	15 of 21	Quarry Place Investments Co.	215-000978	Lot E, Quarry Place Office Park	O.R. 13247 C14	17 of 21
McDowell, Thomas A.	270-000105	5.97 Ac.	O.R. 31411 G14	16 of 21	Quinn, Stephen J. & Nancy C.	560-203660	Lot 132, Scioto Trace Section 3	O.R. 08868 C20	6 of 21
McDowell, Thomas A.	273-000076	6.82 Ac.	D.B. 2385, Pg. 97	17 of 21	Ransom H.R. Inc.	215-000982	Lot H, Quarry Place Office Park	O.R. 11406 C07	17 of 21
McGovern, Norma J., Tr.	590-198729	Lot 7A & Lot 7B, The Quarry on the Scioto	O.R. 31767 I11	16 of 21	Ransom H.R. Inc.	215-000983	Reserve, Quarry Place Office Park	O.R. 11406 C12	17 of 21
McGrath, F. Edward & Charlotte M.	560-203661	Lot 133, Scioto Trace Section 3	O.R. 8175 C02	6 of 21	Ransom H.R. Inc.	215-000977	Lot C, Quarry Place Office Park	O.R. 15247 B02	17 of 21
McIntyre, Melinda J.	590-206472	Res. 23, Resub. Lot 18, The Quarry on the Scioto	O.R. 10277 A05	16 of 21	Ransom H.R. Inc.	215-000981	Lot G, Quarry Place Office Park	O.R. 11406 C07	17 of 21
McVoy, D. Stevens & Karen S.	200-000565-8	9.696 Ac.	O.R. 11587 B03	11 of 21	Rapp, Elouse J.	200-000277	1.211 Ac.	D.B. 2652, Pg. 572	12 of 21
Mechenbier, James A. & Joellen	273-001771	Lot 7, Hayden Farms Add. 2	Inst. 199712220172987	15 of 21	Ray, Frank D.	050-006644	2.810 Ac.	D.B. 3517, Pg. 995	11 of 21
Meftah, Parviz & Erika	200-000783	Lot 3, Woodland Estates on the Scioto	D.B. 3754, Pg. 463	8 of 21	Redman, Edmund C.	200-001795	Lot 13, Chanticleer	No Deed Of Record	10 of 21
Miles, Jack W.	200-000537	3.006 Ac.	O.R. 01122 D01	11 of 21	Rhodus, Walter T. & Margaret L.	201-000017	Lot 20, Hayden Falls Heights	O.R. 05678 G17	14 of 21

**RECORD INFORMATION  
ALPHABETICAL LISTING OF ADJACENT LANDOWNERS**

LANDOWNER NAME	PARCEL NUMBER	ACREAGE OR LOT No.	DEED REFERENCE	SHEET REFERENCE
Rhodus, Walter T. & Margaret L.	201-000018	Lot 21, Hayden Falls Heights	O.R. 05678 G17	14 of 21
Riebel, Frank A.	201-000010	Lot 12, Hayden Falls Heights	D.B. 3473, Pg. 278	14 of 21
Riebel, Frank A.	201-000011	Lot 13, Hayden Falls Heights	D.B. 3473, Pg. 278	14 of 21
Risen, James & Mary J.	560-203647	Lot 119, Scioto Trace Section 3	O.R. 09951 B09	6 of 21
Rode, Emmy M.	560-203618	Lot 89, Scioto Trace Section 3	O.R. 10146 D15	8 of 21
Rogers, Sherrie L. & Lawrence C.	270-000073	0.774 Ac.	D.B. 3313, Pg. 147	17 of 21
Rogers, Sherrie L. & Lawrence C.	270-000695	0.0311 Ac.	D.B. 3429, Pg. 59	17 of 21
Ross, Stanley D. & Joan H.	200-001272	Lot 8, Stoney Bridge	O.R. 11542 H16	10 of 21
Royder, Mona L.	200-000269	2.944 Ac.	O.R. 20365 B16	12 of 21
Royder, Mona L.	200-000505	6.099 Ac.	O.R. 16817 F02	13 of 21
Ruma, David C.	050-003117	Lot 50, Shire Cove	O.R. 30057 G07	13 of 21
Santanello, Steven A. & Brenda J. Sickle-	050-003115	Lot 48, Shire Cove	O.R. 16812 D11	13 of 21
Scantland, Janice M.	050-006560	Lot 13, Scioto Run	O.R. 34941 I07	10 of 21
Scioto Bay Properties Limited Partnership	210-003207	10.463 Ac.	O.R. 15091 J10	3 of 21
Scott, Robert M. & Dolores J.	590-198724	Lot 4, The Quarry on the Scioto	O.R. 24999 A06	16 of 21
Search, David E. & Charlotte A.	590-206468	Res. 19, Resub. Lot 18, The Quarry on the Scioto	O.R. 13245 E19	16 of 21
Sechler, Judith A.	201-000019	Lot 22, Hayden Falls Heights	D.B. 3744, Pg. 593	14 of 21
Sechler, Judith A.	201-000020	Lot 23, Hayden Falls Heights	D.B. 3744, Pg. 593	14 of 21
Shaffer, Dennis G. & Ella	590-198735	Lot 10B, The Quarry on the Scioto	O.R. 22515 J03	16 of 21
Sheehan, Michael J. & Kathryn P.	273-001758	Lot 26, Hayden Farms Add.	O.R. 33864 A19	14 of 21
Sigler, Anthony T.	273-001777	Lot 1, Llewellyn Estates	O.R. 28672 E12	15 of 21
Simpson, Charles R. & Barbara S.	200-000765	0.913 Ac.	Inst. 199709020082564	11 of 21
Sisson, John R. & Willa A.	200-000716	3.088 Ac.	O.R. 23854 B02	11 of 21
Sisson, John R. & Willa A.	200-000535	3.088 Ac.	O.R. 23854 B02	11 of 21
Skunza, Adrian M.	560-203657	Lot 129, Scioto Trace Section 3	O.R. 17176 H15	6 of 21
Slack, Robert A. & Jeanne K.	200-000160	2.216 Ac.	O.R. 13777 F11	12 of 21
Smith, George W.	200-002735	2.464 Ac.	O.R. 12474 H06	10 of 21
Smith, Rendel W. & Sandra J.	200-001792	Lot 10, Chanticleer	O.R. 06314 F02	10 of 21
Smoot, Rita B.	200-000233	3.824 Ac.	D.B. 2583, Pg. 319	11 of 21
Southwick, Robert T. & Betty J.	200-000103	4 AC.	D.B. 3375, Pg. 144	10 of 21
Specialty Restuarants Corp.	560-154664	85.65 Ac.	O.R. 06749 A12	4 of 21
Specialty Restuarants Corp.	560-154667	0.587 Ac.	O.R. 06749 A12	4 of 21
Specialty Restuarants Corp.	560-154667	6.517 Ac.	O.R. 06749 A12	6 of 21
Sporzynski, Paul A. & Mark Bok	200-000425	2.047 Ac.	O.R. 03121 E12	8 of 21
Spurlack, Michael & Brenda S.	200-001270	Lot 6, Stoney Bridge	D.B. 3690, Pg. 333	10 of 21
Stalter, Betty J. & Frederick F.	273-001729	0.58 Ac.	O.R. 18244 I15	15 of 21
Standley, T. Kyle & Kelly H.	273-001933	2.096 Ac.	O.R. 33570 I09	16 of 21
Standley, T. Kyle & Kelly H.	273-006518	0.678 Ac.	O.R. 33570 I09	16 of 21
Stanley, Dorothy A.	200-000501	0.40 Ac.	O.R. 26191 B16	8 of 21
Stanley, Henry M., Jr. & Patricia J.	050-006641	0.836 Ac.	O.R. 05932 F18	10 of 21
Stanley, Henry M., Jr. & Patricia J.	050-006642	1.672 Ac.	O.R. 05932 F18	10 of 21
Steinke, Ann C.	200-002084	0.92428 Ac.	O.R. 32815 I06	10 of 21
Stevens, Robert E. & Susan S.	200-001793	Lot 11, Chanticleer	O.R. 12407 A09	10 of 21
Stonebrooke Phase 2	560-192797	Stonebrooke Condos	P.B. 24, Pg. 4	6 of 21
Stonebrooke Phase 2	560-192836	Stonebrooke Condos	P.B. 24, Pg. 4	6 of 21
Szykowny, Thomas E. & Henry M. O'Neil	200-001712	0.623 Ac.	O.R. 32460 B16	10 of 21
Talbott, C. Robert	050-003112	Lot 45, Shire Cove	O.R. 10694 J13	13 of 21
Talbott, Richard A.	050-003113	Lot 46, Shire Cove	O.R. 09376 D17	13 of 21
Taub, Peter C.	590-198765	Lot 32, The Quarry on the Scioto	O.R. 06027 A01	16 of 21
Tice, Muriel K.	200-000272	4.296 Ac.	O.R. 15120 D03	12 of 21

LANDOWNER NAME	PARCEL NUMBER	ACREAGE OR LOT No.	DEED REFERENCE	SHEET REFERENCE
Travis, Alan C. & Fiona H.	590-206471	Res. 22, Resub. Lot 18, The Quarry on the Scioto	O.R. 13983 E19	16 of 21
Vaughan, Roger A., Sr.	590-187212	4.268 AC.	O.R. 10994 E05	16 of 21
Vekasy, Richard G.	050-003042	Lot 12, Shire Cove	O.R. 06726 E01	13 of 21
Vogel, Jack K.	215-000020	26.278 Ac.	O.R. 00541 C10	17 of 21
Wagenbrenner, Thomas G. & Judith E.	200-000781	Lot 1, Woodland Estates on the Scioto	O.R. 31821 G12	8 of 21
Wagenbrenner, Thomas G. & Judith E.	200-000782	Lot 2, Woodland Estates on the Scioto	O.R. 31821 G12	8 of 21
Waldon North Condominium	560-186067	Reserve, Waldon North Condominium	P.B. 56, Pg. 4	6 of 21
Waldon North Condominium	560-186106	Reserve, Waldon North Condominium	P.B. 56, Pg. 4	6 of 21
Waldon Ravines Phase 3	560-179133	Waldon Ravines Condos	P.B. 3, Pg. 478	6 of 21
Waldon Ravines Phase 3	560-179156	Waldon Ravines Condos	P.B. 3, Pg. 478	6 of 21
Waldon Ravines Recreation Assoc.	560-179781	Reserve, Waldon Ravines Condos	D.B. 3676, Pg. 394	6 of 21
Walter, George L. & Nancy C.	270-000273	0.815 Ac.	D.B. 2691, Pg. 180	16 of 21
Walter, George L. & Nancy C.	270-000272	0.720 Ac.	D.B. 2691, Pg. 180	16 of 21
Walton, Craig C. & Machele C.	590-206477	Res. 28, Resub. Lot 18, The Quarry on the Scioto	O.R. 23201 F04	16 of 21
Wanamaker, Cynthia L. & Stephen R.	273-001180	Lot 8, Korrier Place	O.R. 08359 E08	17 of 21
Webb, Charles R. & Barbara A.	273-001772	Lot 8, Hayden Farms Add. 2	O.R. 01855 H10	15 of 21
Weil, Edgar E.	200-000123	0.681 Ac.	O.R. 18217 B14	8 of 21
Wells, Mark D. & Joan M.	050-006646	1.672 Ac.	O.R. 02157 H13	10 of 21
Willard, Douglas D. & Carolyn A.	560-181879	Lot 18, Scioto Trace	O.R. 22230 G05	6 of 21
Williams, Rosalind	560-203616	Lot 87, Scioto Trace Section 3	O.R. 29373 C13	8 of 21
Wolinetz, Barry, H., Tr.	270-000276	1.673 Ac.	O.R. 16725 B05	17 of 21
Wood, David S. & Judith F.	200-001832	2.423 Ac.	O.R. 05756 H14	12 of 21
Yessios, Christos I. & Alexandria	050-003083	Lot 16, Scioto Run	O.R. 07545 D14	13 of 21
Yoder, David L. & Judith J.	590-198741	Lot 13B, The Quarry on the Scioto	O.R. 06253 G20	16 of 21
Zonak, Mary	560-183725	0.460 Ac.	D.B. 3773, Pg. 117	6 of 21



**RECORD INFORMATION  
CITY OF COLUMBUS PROPERTY**

LANDOWNER NAME	PARCEL NUMBER	ACREAGE OR LOT No.	DEED REFERENCE	SHEET REFERENCE	LANDOWNER NAME	PARCEL NUMBER	ACREAGE OR LOT No.	DEED REFERENCE	SHEET REFERENCE
City of Columbus		7.38 Ac.	D.B. 384, Pg. 188	3 of 21	City of Columbus		18.90 Ac.	D.B. 314, Pg. 559	14 of 21
City of Columbus		0.514 Ac.	D.B. 319, Pg. 328	3 of 21	City of Columbus		16.08 Ac.	D.B. 314, Pg. 570	14 of 21
City of Columbus		5.65 & 2.34 Ac.	D.B. 324, Pg. 222	4 of 21	City of Columbus		13.15 Ac.	D.B. 314, Pg. 634	14 of 21
City of Columbus		13.71 Ac.	D.B. 381, Pg. 593	4 of 21	City of Columbus		0.70 Ac.	D.B. 314, Pg. 623	15 of 21
City of Columbus		7.072 Ac.	D.B. 382, Pg. 224	4 of 21	City of Columbus		20.80 Ac.	D.B. 314, Pg. 626	15 of 21
City of Columbus		9.486 Ac.	D.B. 314, Pg. 590	4 of 21	City of Columbus		18.73 Ac.	D.B. 314, Pg. 607	15 of 21
City of Columbus		8.18 Ac.	D.B. 382, Pg. 87	5 of 21	City of Columbus		3.50 Ac.	D.B. 314, Pg. 578	16 of 21
City of Columbus		8.18 Ac.	D.B. 406, Pg. 519	5 of 21	City of Columbus		17.44 Ac.	D.B. 314, Pg. 628	16 of 21
City of Columbus		5.14 Ac.	D.B. 314, Pg. 557	5 of 21	City of Columbus		8.57 Ac.	D.B. 314, Pg. 583	17 of 21
City of Columbus		5.99 Ac.	D.B. 399, Pg. 316	5 of 21	City of Columbus		4.85 Ac.	D.B. 314, Pg. 568	17 of 21
City of Columbus		5.99 Ac.	D.B. 314, Pg. 555	5 of 21	City of Columbus		8.57 Ac.	D.B. 314, Pg. 588	17 of 21
City of Columbus		5.00 Ac.	D.B. 325, Pg. 154	5 of 21	City of Columbus		8.57 Ac.	D.B. 314, Pg. 586	17 of 21
City of Columbus		33.05 Ac.	D.B. 314, Pg. 600	5 of 21	City of Columbus		1.8 Ac.	D.B. 314, Pg. 589	
City of Columbus		11.76 Ac.	D.B. 314, Pg. 550	6 of 21	City of Columbus		0.83 Ac.	D.B. 1102, Pg. 28	
City of Columbus		14.77 Ac.	D.B. 376, Pg. 503	6 of 21	City of Columbus		2.96 Ac.	D.B. 314, Pg. 566	
City of Columbus		1.223 Ac.	D.B. 2289, Pg. 198	6 of 21					
City of Columbus		4.6 Ac.	D.B. 930, Pg. 653	6 of 21					
City of Columbus		part Lot 11, Duranceau Park	D.B. 926, Pg. 485	6 of 21					
City of Columbus		Lot 11, Duranceau Park	D.B. 926, Pg. 487	6 of 21					
City of Columbus		Lots 1-10, 12-21, Res.,	D.B. 914, Pg. 354	6 of 21					
City of Columbus		7.20 Ac.	D.B. 341, Pg. 621	6 of 21					
City of Columbus		5.44 Ac.	D.B. 322, Pg. 25	6 of 21					
City of Columbus		12.91 Ac.	D.B. 310, Pg. 341	7 of 21					
City of Columbus		2.82 Ac.	D.B. 825, Pg. 203	7 of 21					
City of Columbus		0.063 Ac.	D.B. 309, Pg. 139	7 of 21					
City of Columbus		1 Ac.	D.B. 314, Pg. 597	7 of 21					
City of Columbus			D.B. 292, Pg. 592	7 of 21					
City of Columbus		9.486 Ac.	D.B. 314, Pg. 599	7 of 21					
City of Columbus		5.57 Ac.	D.B. 314, Pg. 594	7 of 21					
City of Columbus		3.47 Ac.	D.B. 314, Pg. 615	8 of 21					
City of Columbus		17.57 Ac.	D.B. 378, Pg. 503	8 of 21					
City of Columbus		6.48 Ac.	D.B. 629, Pg. 587	9 of 21					
City of Columbus		40.43 Ac.	D.B. 679, Pg. 116	9 of 21					
City of Columbus		6.48 Ac.	D.B. 314, Pg. 592	9 of 21					
City of Columbus		4.40 Ac.	D.B. 314, Pg. 603	9 of 21					
City of Columbus		11.14 Ac.	D.B. 314, Pg. 609	10 of 21					
City of Columbus		4.58 Ac.	No Deed of Record	10 of 21					
City of Columbus		16.96 Ac.	D.B. 1050, Pg. 298	10 of 21					
City of Columbus		1.95 Ac.	D.B. 863, Pg. 397	11 of 21					
City of Columbus		3.81 Ac.	D.B. 314, Pg. 605	11 of 21					
City of Columbus		10.1 Ac.	D.B. 314, Pg. 560	11 of 21					
City of Columbus		2.82 Ac.	D.B. 314, Pg. 564	11 of 21					
City of Columbus		6.50 Ac.	D.B. 314, Pg. 619	12 of 21					
City of Columbus		2.48 Ac.	D.B. 314, Pg. 617	12 of 21					
City of Columbus		20.79 Ac.	D.B. 314, Pg. 631	12 of 21					
City of Columbus		14.09 Ac.	D.B. 314, Pg. 562	12 of 21					
City of Columbus		4.10 Ac.	D.B. 314, Pg. 576	12 of 21					
City of Columbus		8.93 Ac.	D.B. 314, Pg. 581	13 of 21					
City of Columbus		8.41 Ac.	D.B. 314, Pg. 572	13 of 21					
City of Columbus		9.05 Ac.	D.B. 314, Pg. 548	13 of 21					

