

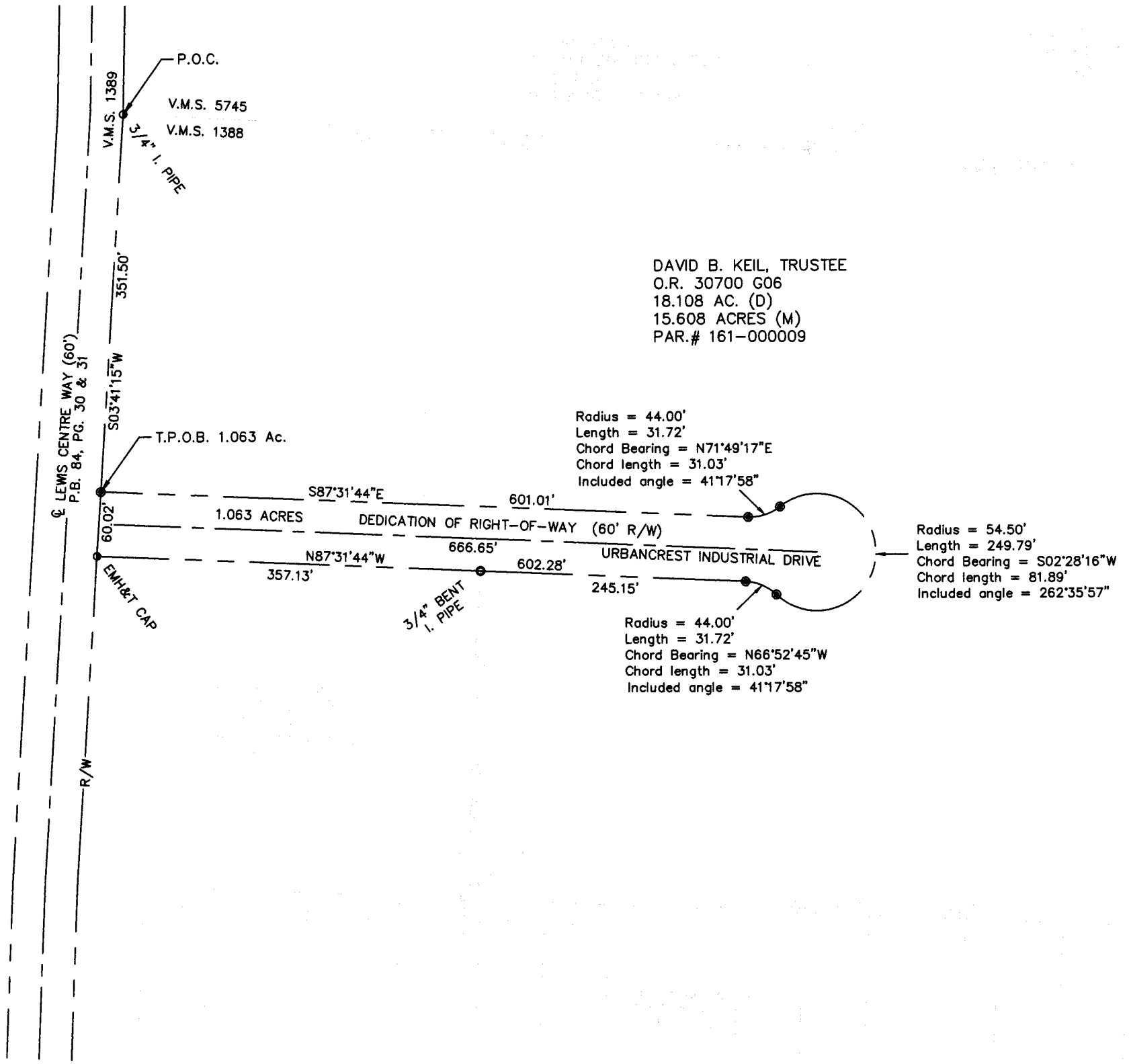
DEDICATION OF RIGHT-OF-WAY  
FOR URBANCREST INDUSTRIAL DRIVE  
PLAT OF SURVEY 1.063 ACRES  
LOCATED IN  
VIRGINIA MILITARY SURVEY No. 1388  
VILLAGE OF URBANCREST, FRANKLIN COUNTY, OHIO  
PAR.# 161-000009

**RECEIVED**

JAN 23 2009

Franklin County Engineer  
Dean C. Ringle, P.E., P.S.

DAVID B. KEIL, TRUSTEE  
O.R. 30700 G06  
18.108 AC. (D)  
15.608 ACRES (M)  
PAR.# 161-000009



**LEGEND**

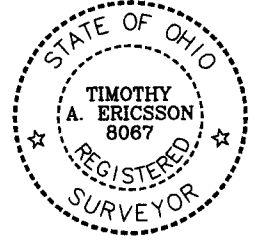
- CAPPED IRON PIN SET (8067)
- P.K. NAIL FOUND
- CAPPED PIN FOUND
- IRON PIN/PIPE FOUND
- ◆ BENCHMARK
- ▲ STONE FOUND



1 inch = 120 ft.

**BASIS OF BEARING**

Bearings are based on a centerline of Lewis Centre Way shown in shown on Plat of CAPITAL PARK SOUTH P.B. 84, P.G. 30 & 31 as being N03°41'15"E .



*TE*  
TIMOTHY A. ERICSSON P.S. 8067      1/23/2009      DATE