

**SURVEY DATA:**

BEARINGS BASED UPON THE OHIO STATE PLANE COORDINATE SYSTEM, SOUTH ZONE NAD83 (1995). SAID BEARINGS ORIGINATED FROM SAID COORDINATE SYSTEM BY GPS OBSERVATIONS OF SELECTED STATIONS IN THE NATIONAL GEODETIC SURVEY CONTINUOUSLY OPERATING REFERENCE STATION (NGS CORS) NETWORK. THE BEARING BETWEEN FCE MONUMENTS 'FCGS 2270 RESET' AND 'FCGS 4452 RESET', BEING S04°44'36"W, IS DESIGNATED THE 'BASIS OF BEARING' FOR THIS SURVEY.

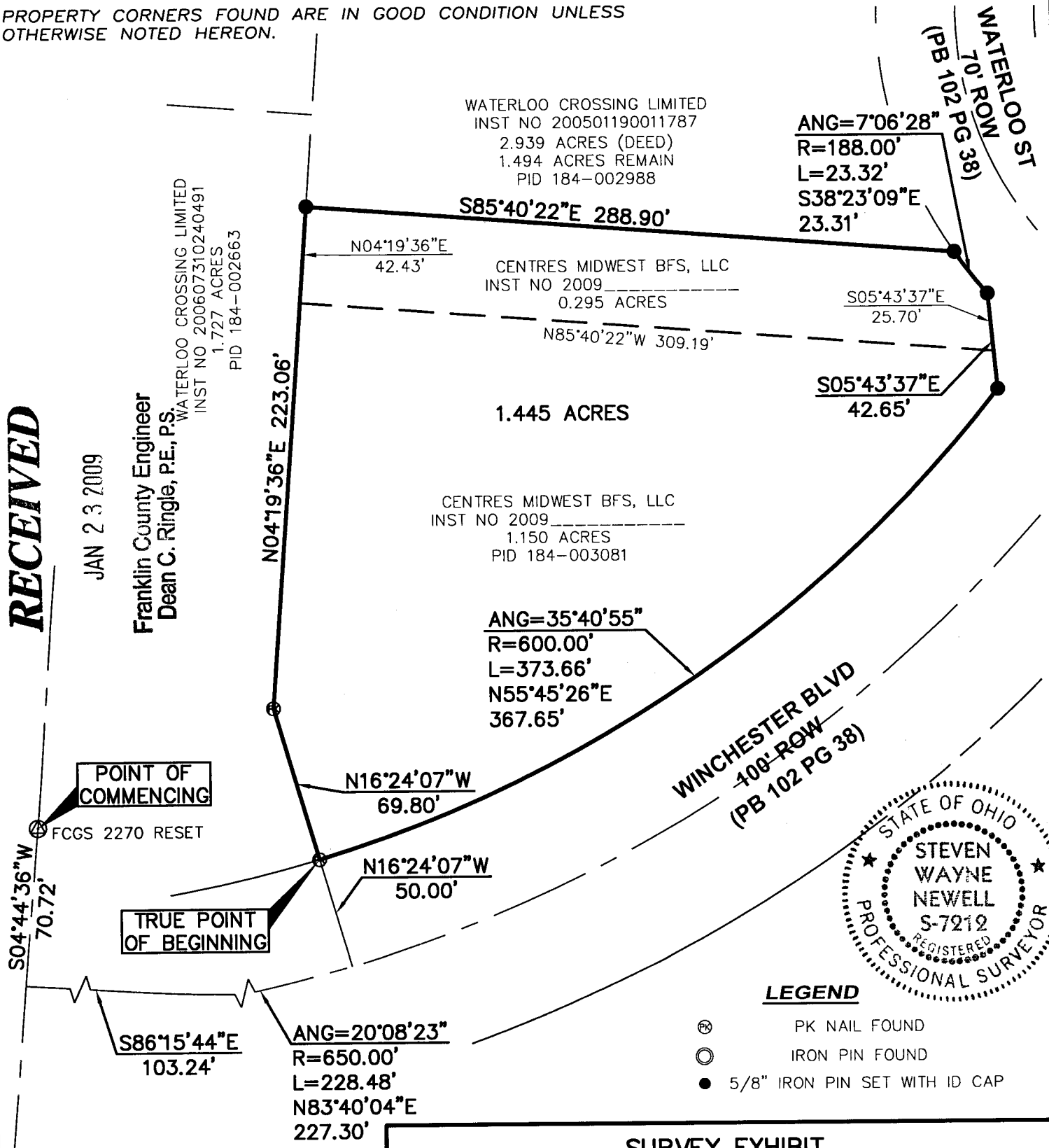
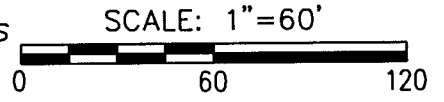
**REFERENCE DOCUMENTS:**

INST NO 200501190011787  
PB 102 PG 38

**SURVEY NOTES:**

IRON PINS SET ARE 5/8" REBAR, 30" IN LENGTH WITH A PLASTIC PLUG PLACED ON TOP INSCRIBED WITH THE NAME "WOOLPERT", UNLESS OTHERWISE NOTED HEREON.

PROPERTY CORNERS FOUND ARE IN GOOD CONDITION UNLESS OTHERWISE NOTED HEREON.



RECEIVED

JAN 23 2009

Franklin County Engineer  
Dean C. Ringle, P.E., P.S.

WATERLOO CROSSING LIMITED  
INST NO 200607310240491  
1.727 ACRES  
PID 184-002663

WATERLOO CROSSING LIMITED  
INST NO 200501190011787  
2.939 ACRES (DEED)  
1.494 ACRES REMAIN  
PID 184-002988

CENTRES MIDWEST BFS, LLC  
INST NO 2009  
0.295 ACRES  
N85°40'22"W 309.19'

1.445 ACRES

CENTRES MIDWEST BFS, LLC  
INST NO 2009  
1.150 ACRES  
PID 184-003081

ANG=35°40'55"  
R=600.00'  
L=373.66'  
N55°45'26"E  
367.65'

ANG=7°06'28"  
R=188.00'  
L=23.32'  
S38°23'09"E  
23.31'

S05°43'37"E  
25.70'

S05°43'37"E  
42.65'

POINT OF COMMENCING

TRUE POINT OF BEGINNING



**LEGEND**

- PK NAIL FOUND
- IRON PIN FOUND
- 5/8" IRON PIN SET WITH ID CAP

**CERTIFICATION:**

THIS DRAWING BASED ON A SURVEY PERFORMED BY WOOLPERT, INC. IN NOVEMBER, 2008.

WOOLPERT, INC.  
*[Signature]*  
STEVEN W. NEWELL DATE  
OHIO REGISTERED PROFESSIONAL SURVEYOR NO. 7212

**SURVEY EXHIBIT**  
CONSOLIDATION OF A 1.150 & A 0.295 ACRE TRACT  
PT. WATERLOO CROSSING LIMITED  
QTR. SECTION 25, TOWNSHIP 11, RANGE 21, CONGRESS LANDS  
VILLAGE OF CANAL WINCHESTER, FRANKLIN COUNTY, OHIO



2780 AIRPORT DRIVE  
SUITE 100  
COLUMBUS, OHIO 43219  
PHONE: 614.476.6000  
FAX: 614.476.6225

DES TMC PROJECT  
DRT TMC NO. 68938  
CKD SWN DATE 01/12/2009  
SHEET 1 OF 1