

H-1-E



REVISION RECORD		
NO	DATE	DESCRIPTION

RECEIVED

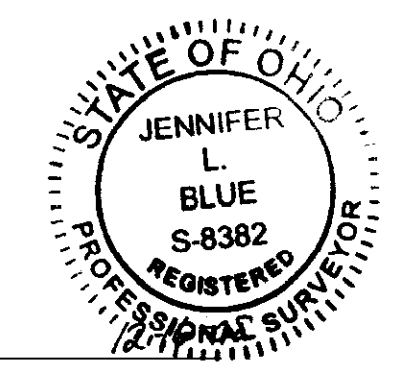
DEC 16 2008  
 Franklin County Engineer  
 Dean C. Ringle, P.E., P.S.

**BASIS OF BEARINGS**  
 BEARINGS WERE BASED ON THE CENTERLINE OF HAUGHN ROAD AS BEING NORTH 02°57'51" EAST. AS SHOWN IN INSTRUMENT NUMBER 200306170181858.

**SITUATE**  
 STATE OF OHIO, COUNTY OF FRANKLIN, CITY OF GROVE CITY, AND BEING LOCATED IN VIRGINIA MILITARY SURVEY NUMBER 1383, BEING ALL OF A 0.158, 2.395, 6.839, 0.166, 0.369, 0.546, AND A 0.685 ACRE TRACTS IN INSTRUMENT NUMBER 200810210155637, AS CONVEYED TO HAUGHN GLEN INVESTMENT, LLC, FRANKLIN COUNTY, OHIO, RECORDER'S RECORDS.

**BOUNDARY SURVEY NOTE**  
 THIS PLAT CONSTITUTES A BOUNDARY SURVEY AS SET FORTH IN THE MINIMUM STANDARDS FOR BOUNDARY SURVEYING IN THE STATE OF OHIO, ADMINISTRATIVE CODE CHAPTER 4733-37 AND PROMULGATED BY THE BOARD OF REGISTRATION FOR PROFESSIONAL ENGINEERS AND SURVEYORS OF THE STATE OF OHIO PURSUANT TO CHAPTER 4733.

**SURVEYOR'S CERTIFICATE**  
 THIS EXHIBIT WAS BASED ON AN ACTUAL FIELD SURVEY BY CIVIL & ENVIRONMENTAL CONSULTANTS, INC. IN DECEMBER, 2008.



JENNIFER L. BLUE P.S.-8382  
 DATE

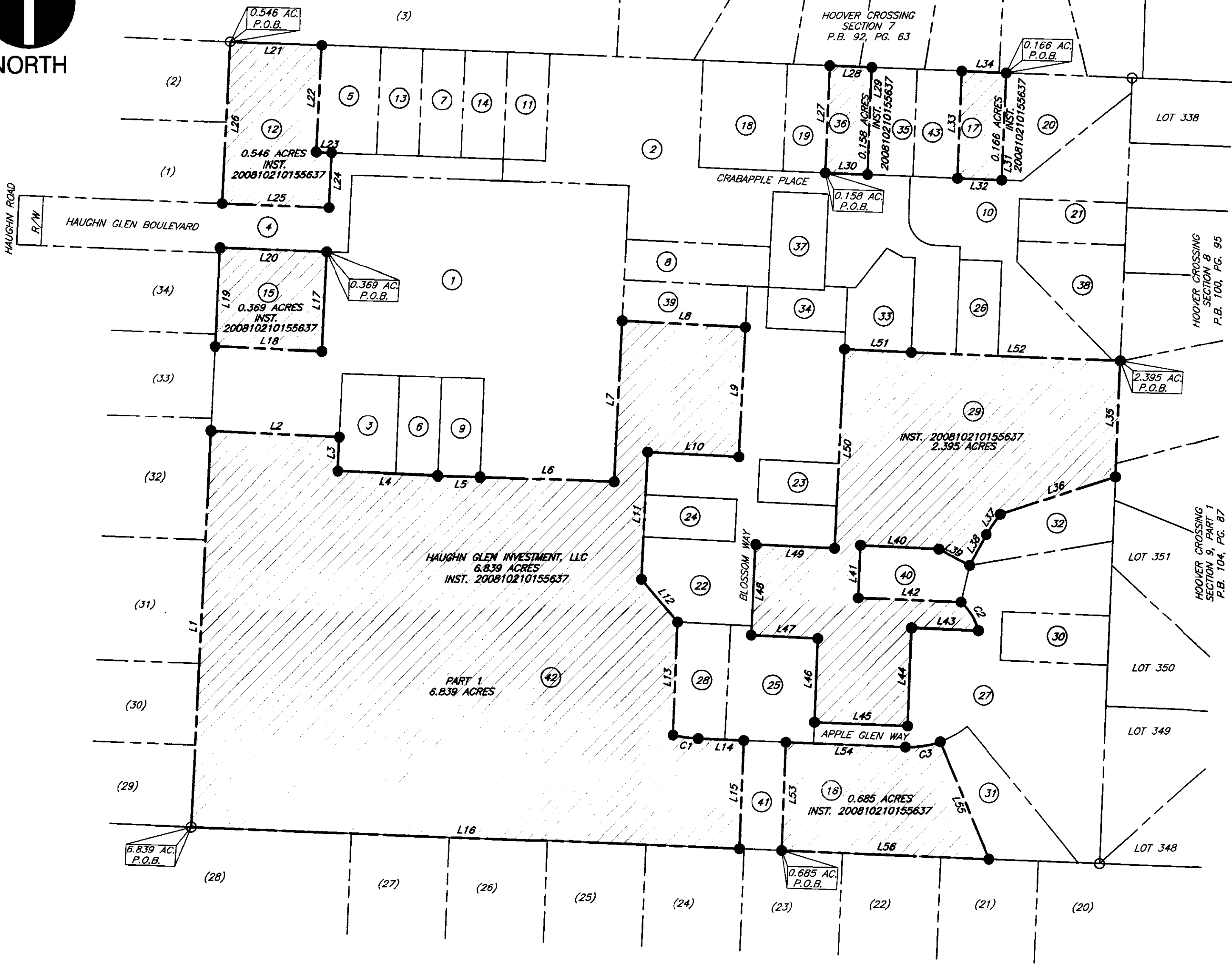


**Civil & Environmental Consultants, Inc.**  
 8740 Orion Place, Suite 100 - Columbus, OH 43240  
 Ph: 614.540.6633 · 888.598.6808 · Fax: 614.540.6638  
 www.cecinc.com

**RESIDUAL 11.157 ACRES  
 BOUNDARY SURVEY**

Situate In  
**GROVE CITY  
 FRANKLIN COUNTY, OHIO**  
 Made For  
**HAUGHN GLEN INVESTMENT, LLC  
 HAUGHN GLEN REMIANING PROPERTY  
 GROVE CITY, OH.**

DATE:	12-16-08	SCALE:	1"=100'	DRAWING NO.:	<b>BNDY</b>
DRAWN BY:	JMH	CHECKED BY:	JLB	SHEET 1 OF 2	
PROJECT NO.:	082-108	APPROVED BY:	JLB		



LINE TABLE

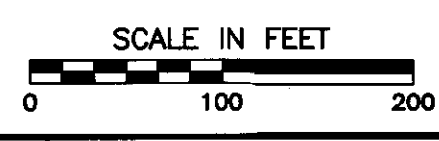
LINE	BEARING	DISTANCE	LINE	BEARING	DISTANCE	LINE	BEARING	DISTANCE
L1	N 02°57'51" E	487.63'	L20	S 87°35'52" E	131.51'	L39	N 62°22'15" W	43.00'
L2	S 87°02'09" E	158.50'	L21	S 87°33'31" E	112.50'	L40	N 87°02'09" W	97.09'
L3	S 02°57'51" W	41.42'	L22	S 02°57'51" W	132.01'	L41	S 02°26'29" W	65.09'
L4	S 87°02'09" E	123.63'	L23	S 87°33'31" E	19.00'	L42	S 87°33'31" E	127.32'
L5	S 88°04'53" E	52.00'	L24	S 02°57'51" W	67.90'	L43	N 87°33'09" W	82.41'
L6	S 87°33'31" E	165.00'	L25	N 87°35'52" W	131.51'	L44	S 02°26'51" W	121.14'
L7	N 02°57'51" E	198.19'	L26	N 02°57'51" E	200.00'	L45	N 87°33'40" W	115.00'
L8	S 87°02'09" E	151.89'	L27	N 02°26'29" E	132.00'	L46	N 02°26'51" E	103.42'
L9	S 02°57'51" W	160.00'	L28	S 87°33'31" E	52.00'	L47	N 87°02'09" W	81.89'
L10	N 87°02'09" W	112.50'	L29	S 02°26'29" W	132.00'	L48	N 02°57'51" E	112.72'
L11	S 02°57'51" W	156.00'	L30	N 87°33'31" W	52.00'	L49	N 87°02'09" E	97.00'
L12	S 39°28'01" E	69.59'	L31	S 02°26'29" W	132.00'	L50	N 02°57'51" E	244.97'
L13	S 02°26'51" W	139.32'	L32	N 87°33'31" W	55.00'	L51	S 87°02'09" E	82.48'
L14	S 87°33'09" E	56.11'	L33	N 02°26'29" E	132.00'	L52	S 87°33'31" E	257.83'
L15	S 02°26'51" W	132.20'	L34	S 87°33'31" E	55.00'	L53	N 02°26'51" E	132.20'
L16	N 87°31'25" W	675.33'	L35	S 02°30'20" W	142.50'	L54	S 87°33'09" E	147.21'
L17	S 02°57'51" W	122.79'	L36	S 72°13'43" W	149.08'	L55	S 22°35'43" E	155.34'
L18	N 87°02'09" W	131.50'	L37	S 34°28'17" W	30.33'	L56	N 87°30'30" W	255.57'
L19	N 02°57'51" E	121.50'	L38	S 28°52'47" W	43.00'			

CURVE TABLE

CURVE	DELTA ANGLE	RADIUS	ARC LENGTH	CHORD BRG.	CHORD DIST.
C1	11°03'38"	163.00'	31.47'	S 82°01'20" E	31.42'
C2	33°38'41"	72.00'	42.28'	S 30°34'45" E	41.67'
C3	22°09'02"	113.00'	43.69'	N 81°22'20" E	43.41'

LEGEND

- = FOUND 3/4" IRON PIPE STAMPED "CEC 5963"
- = SET 1" IRON PIPE, 30" LONG WITH ID CAP STAMPED "CEC PROP COR"



S:\PROJ\2008\02108\NEW HAUGHN\02108-HAUGHN GLEN REMIANING BOUNDARY.DWG (JLB/E) - DEC 16, 2008 - 14:27:44

REVISION RECORD

NO	DATE	DESCRIPTION

SITE PROPERTY LEGEND

ADJACENT PROPERTY LEGEND

- (1) PAUL R. & JUDITH A. JACOBS  
O.R. 2918 PG. 461
- (2) BERNICE J. & BEULAH F. LEONARD  
O.R. 008586G18
- (3) TRINITY UNITED METHODIST CHURCH  
O.R. 032930J19
- (20) WILLIAM R. & VICKIE L. BYRD  
O.R. 18732 PG. F14
- (21) STEVEN M. & BRENDA K. HARPER  
I.N. 200403300069137
- (22) JEFFREY A. STALNAKER  
I.N. 200409240223864
- (23) KERRI BRAY  
I.N. 200507280151019
- (24) FANNY LANE GAINER ET AL 5  
O.R. 3013E09  
O.R. 8787J10  
O.R. 13550A08
- (25) WILLIAM A. QUINN  
I.N. 200510270225958
- (26) FREDERICK N. BOLDT  
I.N. 200601110008007
- (27) STEWARD E. & WILMA J. FULK  
O.R. 11278J20
- (28) LARRY C. CORBIN, TRUSTEE  
I.N. 200809240144301
- (29) J. WICKS COMPANIES LLC.  
I.N. 200508010152504
- (30) STEVE M. & MARILYN K. WEAVER  
I.N. 200508240172349
- (31) RANDALL L. & TONYA L. FREEMAN  
I.N. 200506200119334
- (32) PATRICK T. & BRENDA M. RUTH  
O.R. 7116I02
- (33) RALPH P. KINER TR  
GLADYS L. KINER TR  
I.N. 20007110137138
- (34) TRINITY UNITED METHODIST  
CHURCH OF GROVE CITY  
O.R. 1789B10

- (1) CONDOMINIUM PROPERTY  
C.P.B. 142, PAGE 86  
2.824 ACRES
- (2) HAUGHN GLEN CONDOMINIUM  
FIRST AMENDMENT PART 1  
C.P.B. 143, PAGE 96  
1.536 ACRES
- (3) HAUGHN GLEN CONDOMINIUM  
FIRST AMENDMENT PART 2  
C.P.B. 143, PAGE 96  
0.195 ACRES
- (4) HAUGHN GLEN CONDOMINIUM  
FIRST AMENDMENT PART 3  
C.P.B. 143, PAGE 96  
0.690 ACRES
- (5) HAUGHN GLEN CONDOMINIUM  
SECOND AMENDMENT PART 1  
C.P.B. 147, PAGE 14  
0.225 ACRES
- (6) HAUGHN GLEN CONDOMINIUM  
SECOND AMENDMENT PART 2  
C.P.B. 147, PAGE 14  
0.144 ACRES
- (7) HAUGHN GLEN CONDOMINIUM  
THIRD AMENDMENT PART 1  
C.P.B. 154, PAGE 25  
0.158 ACRES
- (8) HAUGHN GLEN CONDOMINIUM  
THIRD AMENDMENT PART 2  
C.P.B. 154, PAGE 25  
0.204 ACRES
- (9) HAUGHN GLEN CONDOMINIUM  
THIRD AMENDMENT PART 3  
C.P.B. 154, PAGE 25  
0.144 ACRES
- (10) HAUGHN GLEN CONDOMINIUM  
FOURTH AMENDMENT PART 1  
C.P.B. 161, PAGE 12  
0.735 ACRES
- (11) HAUGHN GLEN CONDOMINIUM  
FOURTH AMENDMENT PART 2  
C.P.B. 161, PAGE 12  
0.158 ACRES
- (12) ADDITIONAL PROPERTY  
0.546 ACRES  
(11.157 TOTAL)
- (13) HAUGHN GLEN CONDOMINIUM  
FIFTH AMENDMENT, PART 1  
C.P.B. 172, PAGE 1-35  
0.158 ACRES
- (14) HAUGHN GLEN CONDOMINIUM  
FIFTH AMENDMENT, PART 2  
C.P.B. 172, PAGE 1-35  
0.158 ACRES
- (15) ADDITIONAL PROPERTY  
0.369 ACRES  
(11.157 TOTAL)
- (16) ADDITIONAL PROPERTY  
0.685 ACRES  
(11.157 TOTAL)
- (17) ADDITIONAL PROPERTY  
0.166 ACRES  
(11.157 TOTAL)
- (18) HAUGHN GLEN CONDOMINIUM  
TENTH AMENDMENT, PART 1  
C.P.B. 197, PAGE 12  
0.315 ACRES
- (19) HAUGHN GLEN CONDOMINIUM  
FIFTH AMENDMENT, PART 3  
C.P.B. 172, PAGE 1-35  
0.158 ACRES
- (20) HAUGHN GLEN CONDOMINIUM  
FIFTH AMENDMENT, PART 4  
C.P.B. 172, PAGE 1-35  
0.289 ACRES
- (21) HAUGHN GLEN CONDOMINIUM  
FIFTH AMENDMENT, PART 5  
C.P.B. 172, PAGE 1-35  
0.158 ACRES
- (22) HAUGHN GLEN CONDOMINIUM  
FIFTH AMENDMENT, PART 6  
C.P.B. 172, PAGE 1-35  
1.099 ACRES
- (23) HAUGHN GLEN CONDOMINIUM  
SIXTH AMENDMENT, PART 1  
C.P.B. 175, PAGE 59-69  
0.116 ACRES
- (24) HAUGHN GLEN CONDOMINIUM  
SIXTH AMENDMENT, PART 2  
C.P.B. 175, PAGE 59-69  
0.134 ACRES
- (25) HAUGHN GLEN CONDOMINIUM  
SIXTH AMENDMENT, PART 3  
C.P.B. 175, PAGE 59-69  
0.330 ACRES
- (26) HAUGHN GLEN CONDOMINIUM  
SEVENTH AMENDMENT, PART 1  
C.P.B. 182, PAGE 4-23  
0.139 ACRES
- (27) HAUGHN GLEN CONDOMINIUM  
SEVENTH AMENDMENT, PART 2  
C.P.B. 182, PAGE 4-23  
1.341 ACRES
- (28) HAUGHN GLEN CONDOMINIUM  
SEVENTH AMENDMENT, PART 3  
C.P.B. 182, PAGE 4-23  
0.211 ACRES
- (29) ADDITIONAL PROPERTY  
2.395 ACRES  
(11.157 TOTAL)
- (30) HAUGHN GLEN CONDOMINIUM  
TENTH AMENDMENT, PART 3  
C.P.B. 197, PAGE 12  
0.183 ACRES
- (31) HAUGHN GLEN CONDOMINIUM  
EIGHTH AMENDMENT, PART 1  
C.P.B. 185, PAGE 91  
0.270 ACRES
- (32) HAUGHN GLEN CONDOMINIUM  
EIGHTH AMENDMENT, PART 2  
C.P.B. 185, PAGE 91  
0.243 ACRES
- (33) HAUGHN GLEN CONDOMINIUM  
EIGHTH AMENDMENT, PART 3  
C.P.B. 185, PAGE 91  
0.200 ACRES
- (34) HAUGHN GLEN CONDOMINIUM  
TENTH AMENDMENT, PART 2  
C.P.B. 197, PAGE 12  
0.115 ACRES
- (35) HAUGHN GLEN CONDOMINIUM  
EIGHTH AMENDMENT, PART 4  
C.P.B. 185, PAGE 91  
0.170 ACRES
- (36) ADDITIONAL PROPERTY  
0.158 ACRES  
(11.157 TOTAL)
- (37) HAUGHN GLEN CONDOMINIUM  
NINTH AMENDMENT, PART 1  
C.P.B. 191, PAGE 95  
0.185 ACRES
- (38) HAUGHN GLEN CONDOMINIUM  
NINTH AMENDMENT, PART 2  
C.P.B. 191, PAGE 95  
0.267 ACRES
- (39) HAUGHN GLEN CONDOMINIUM  
NINTH AMENDMENT, PART 3  
C.P.B. 191, PAGE 95  
0.174 ACRES
- (40) HAUGHN GLEN CONDOMINIUM  
NINTH AMENDMENT, PART 4  
C.P.B. 191, PAGE 95  
0.189 ACRES
- (41) HAUGHN GLEN CONDOMINIUM  
ELEVENTH AMENDMENT  
C.P.B. 202, PAGE 34  
0.158 ACRES
- (42) ADDITIONAL PROPERTY  
6.839 ACRES  
(11.157 TOTAL)
- (43) HAUGHN GLEN CONDOMINIUM  
TWELFTH AMENDMENT  
C.P.B. 203, PAGE 26  
0.167 ACRES

RECEIVED

DEC 16 2008

Franklin County Engineer  
Dean C. Ringle, P.E., P.S.

**CEC**  
Civil & Environmental Consultants, Inc.  
8740 Orion Place, Suite 100 - Columbus, OH 43240  
Ph: 614.540.6633 · 888.598.6808 · Fax: 614.540.6638  
www.cecinc.com

RESIDUAL 11.157 ACRES  
BOUNDARY SURVEY  
Situates In  
GROVE CITY  
FRANKLIN COUNTY, OHIO  
Made For  
HAUGHN GLEN INVESTMENT, LLC  
HAUGHN GLEN REMIANING PROPERTY  
GROVE CITY, OH.

DATE:	12-16-08	SCALE:	1"=100'	DRAWING NO.:	<b>BNDY</b>
DRAWN BY:	JMH	CHECKED BY:	JLB	SHEET	
PROJECT NO.:	082-108	APPROVED BY:	JLB	2 OF 2	

S:\PROJ\2008\082108\NEW HAUGHN GLEN REMAINING BOUNDARY.DWG (BLUE) - DEC 16, 2008 - 14:23:32