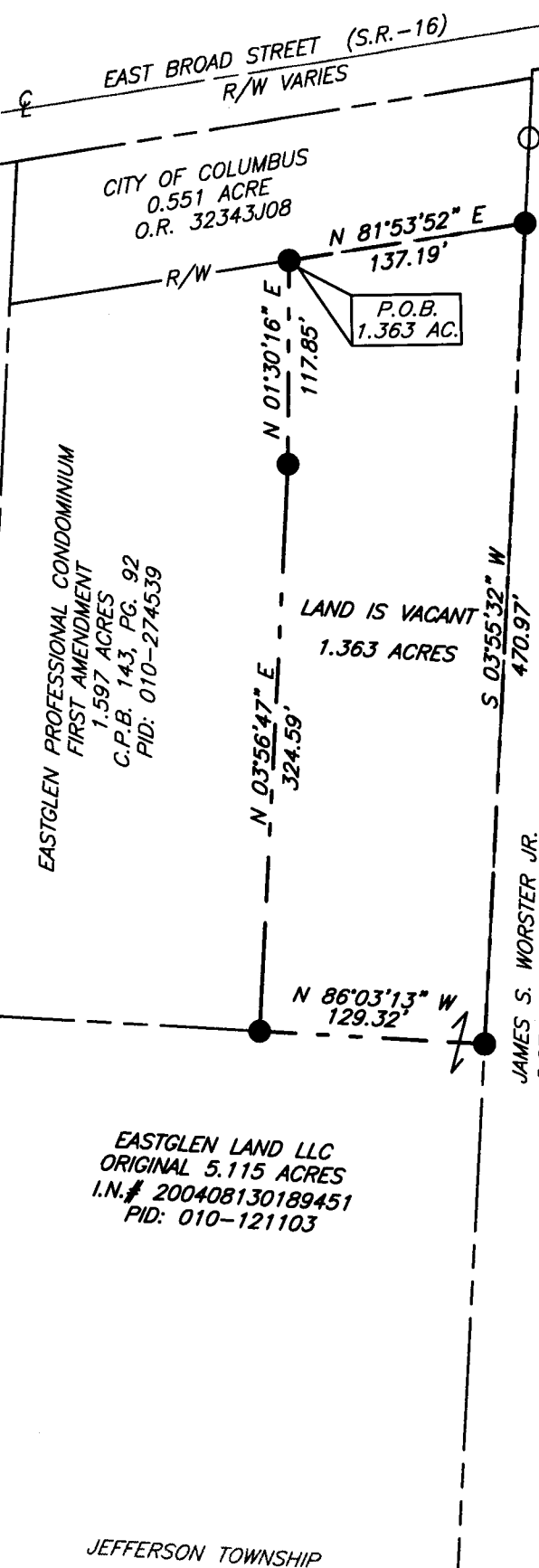


SUBMITTAL & REVISION RECORD

NO	DATE	DESCRIPTION
△		



RECEIVED

JAN 12 2009

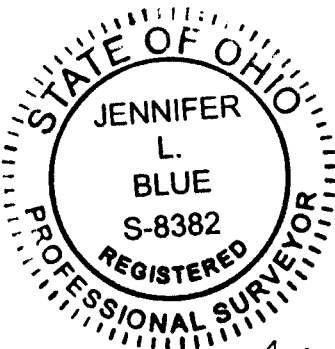
Franklin County Engineer
Dean C. Ringle, P.E., P.S.

SITUATE
SITUATE IN THE STATE OF OHIO, COUNTY OF FRANKLIN, CITY OF COLUMBUS, TOWNSHIP OF JEFFERSON, QUARTER TOWNSHIP 3, TOWNSHIP 1, RANGE 16, UNITED STATES MILITARY DISTRICT.

BASIS OF BEARINGS
BEARINGS ARE BASED ON NORTH 37°10'39" WEST, FROM A GPS SURVEY OF FRANKLIN COUNTY MONUMENTS "LIVINGSTON" AND "HOWELL #2", OHIO STATE PLANE COORDINATE SYSTEM. SOUTH ZONE, NAD 83, 1986 ADJUSTMENT.

BOUNDARY SURVEY NOTE
THIS PLAT CONSTITUTES A BOUNDARY SURVEY AS SET FORTH IN THE MINIMUM STANDARDS FOR BOUNDARY SURVEYING IN THE STATE OF OHIO, ADMINISTRATIVE CODE CHAPTER 4733-37 AND PROMULGATED BY THE BOARD OF REGISTRATION FOR PROFESSIONAL ENGINEERS AND SURVEYORS OF THE STATE OF OHIO PURSUANT TO CHAPTER 4733.

SURVEYOR'S CERTIFICATE
THIS EXHIBIT WAS BASED ON AN ACTUAL FIELD SURVEY BY CIVIL & ENVIRONMENTAL CONSULTANTS, INC. IN SEPTEMBER, 2008.



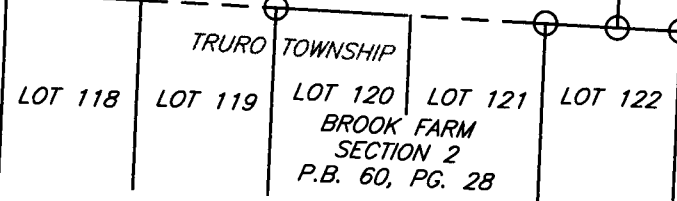
J. L. Blue
JENNIFER L. BLUE P.S.-8382 DATE 1-9-09

EASTGLEN PROFESSIONAL CONDOMINIUM
1.597 ACRES
C.P.B. 121, PG. 43
PID: 520-268022

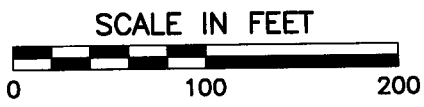
EASTGLEN PROFESSIONAL CONDOMINIUM
FIRST AMENDMENT
1.597 ACRES
C.P.B. 143, PG. 92
PID: 010-274539

EASTGLEN LAND LLC
ORIGINAL 5.115 ACRES
I.N.# 200408130189451
PID: 010-121103

JAMES S. WORSTER JR.
6.27 ACRES (TRACT 1)
I.N.# 200603270056560
PID: 170-000181



LEGEND
● = SET 1" IRON PIPE, 30" LONG, WITH I.D. CAP STAMPED "CEC PROP COR"
○ = FOUND 5/8 INCH IRON PIN, NO CAP



CEC
Civil & Environmental Consultants, Inc.
8740 Orion Place, Suite 100 - Columbus, OH 43240
614-540-6633 · 888-598-6808
www.cecinc.com

1.363 ACRE LOT SPLIT
OF AN ORIGINAL
5.115 ACRE TRACT
Situat in
JEFFERSON TOWNSHIP, CITY of COLUMBUS
FRANKLIN COUNTY, OHIO
Made For
EQUITY REAL ESTATE
EAST GLEN MEDICAL
COLUMBUS, OHIO

DATE:	DEC. 17, 2008	SCALE:	1"=100'	DRAWING NO.:	SPLITS
DRAWN BY:	JMH	CHECKED BY:	JB		
PROJECT NO.:	071-680	APPROVED BY:	JB	SHEET 1 OF 1	