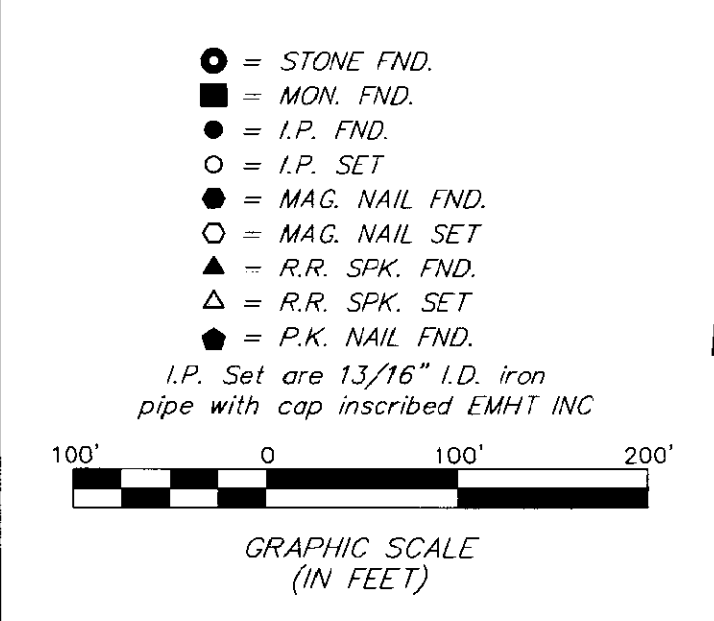
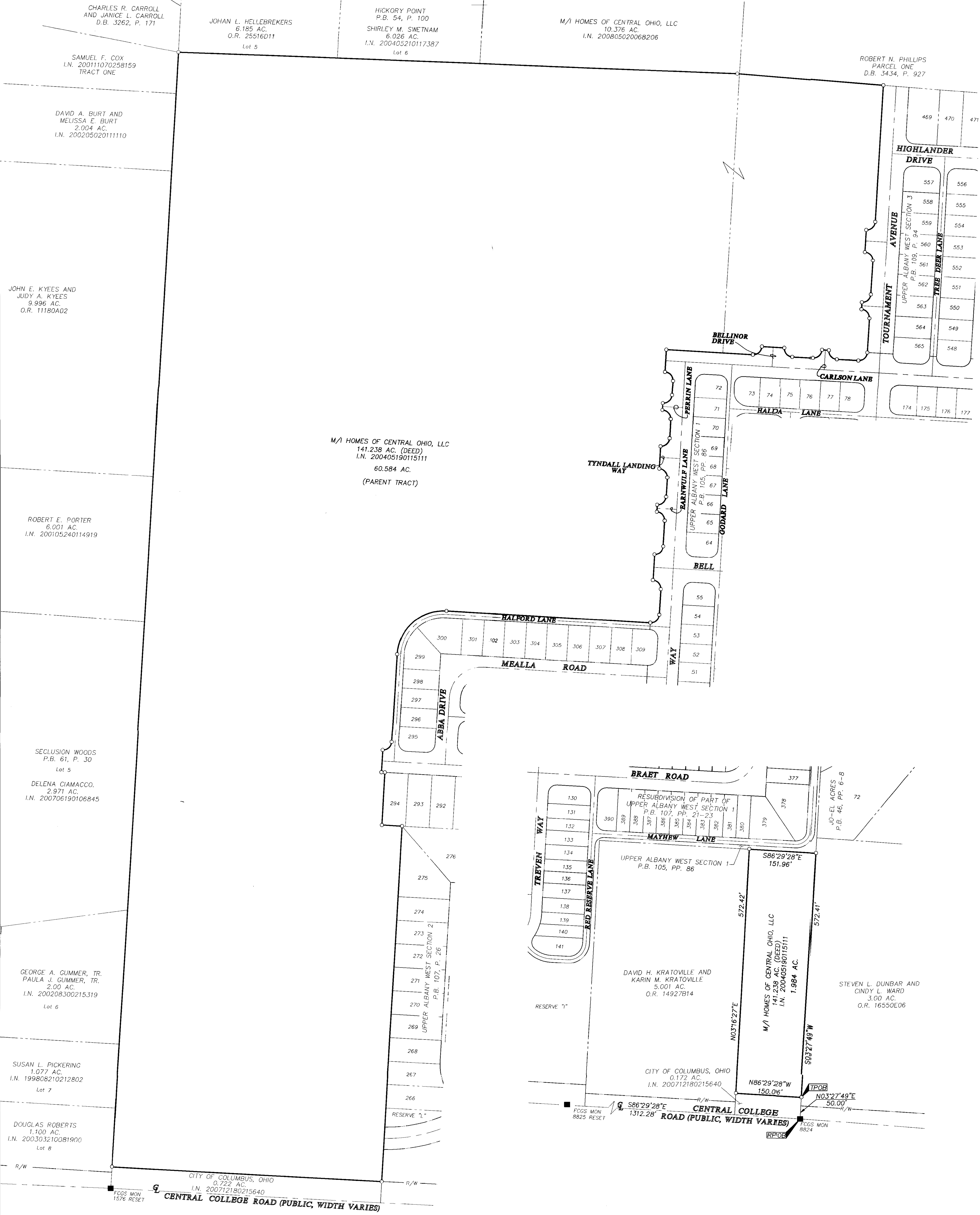


SURVEY OF ACREAGE PARCEL
SECTION 6, QUARTER TOWNSHIP 2, TOWNSHIP 2, RANGE 16
UNITED STATES MILITARY LANDS
CITY OF COLUMBUS, COUNTY OF FRANKLIN, STATE OF OHIO

RECEIVED

JAN 13 2009

Franklin County Engineer
 Dean C. Ringle, P.E., P.S.

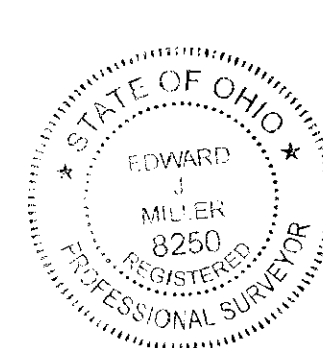


Note:
 This survey was prepared using documents of record, prior plats of survey, and observable field evidence.

BASIS OF BEARINGS: Bearings are based on North 86°29'28" West for the centerline of Central College Road between FCGS Monument Numbers 8824 & 8825 as shown on the "Centerline Survey Plat" for said Central College Road dated 22 August 2002 and on file at the Franklin County Engineer's Office.

RECEIVED
 JAN 13 2009
 Franklin County Engineer
 Dean C. Ringle, P.E., P.S.

By: *[Signature]*
 Professional Surveyor No. 8250



EMHT		Date: December 30, 2008
Evan, Metchwa, Homblon & Tilton, Inc. Engineers • Surveyors • Planners • Scientists 3500 New Albany Road, Columbus, OH 43204 Phone: 614.775.6550 Fax: 614.775.4900		Scale: 1" = 100'
M C M X X V		Job No: 2008-2257
REVISIONS		Sheet: 1 of 1
MARK	DATE	DESCRIPTION