

SURVEY OF ACREAGE TRACT LOT 3, QUARTER TOWNSHIP 2, TOWNSHIP 2, RANGE 17 UNITED STATES MILITARY LANDS CITY OF WESTERVILLE, COUNTY OF FRANKLIN, STATE OF OHIO

Date: December 4, 2008

Scale: 1" = 100'

Job No: 2008-1876

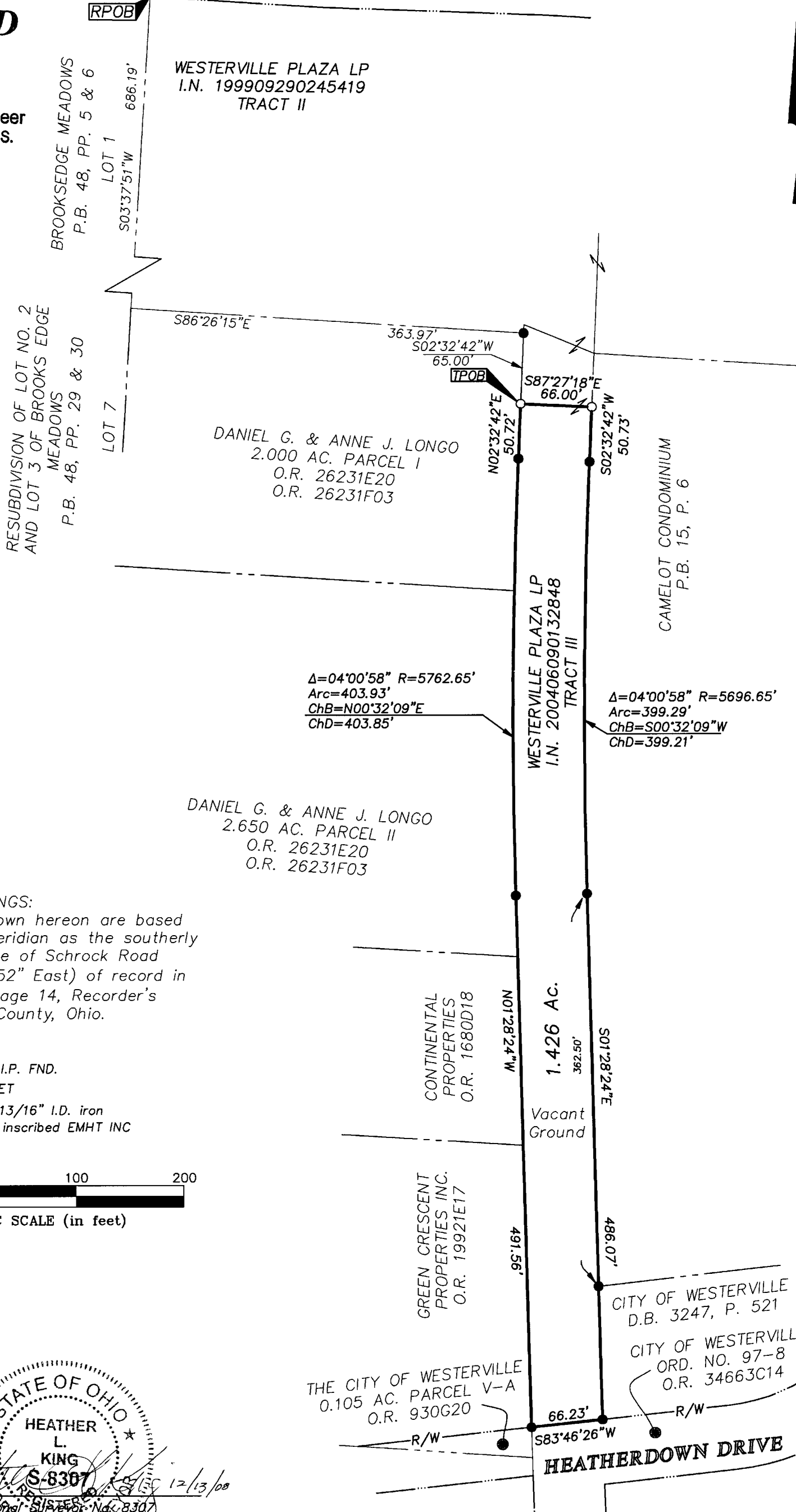
SCHROCK ROAD (PUBLIC, 50' WIDTH)

FRANKLIN COUNTY
 COMMISSIONERS
 O.R. 4149B20

RECEIVED

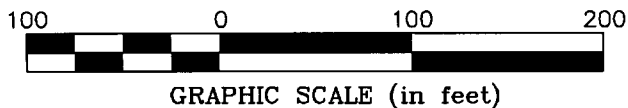
DEC 15 2008

Franklin County Engineer
 Dean C. Ringle, P.E., P.S.



BASIS OF BEARINGS:
 The bearings shown hereon are based on the same meridian as the southerly right-of-way line of Schrock Road (South 86° 22' 52" East) of record in Plat Book 54, Page 14, Recorder's Office, Franklin County, Ohio.

- = 3/4" I.P. FND.
- = I.P. SET
- I.P. Set are 13/16" I.D. iron pipes with cap inscribed EMHT INC



STATE OF OHIO
 HEATHER L. KING
 S-8307
 Professional Surveyor
 No. 8307

By *[Signature]* 12/13/08

\\CMHDATA01\SURVEY\PROJECT\20081876\DWG\81876BV.DWG - PLOTTED BY JMASON [12/14/2008 9:50:07 AM] - LAST SAVED BY JMASON [12/14/2008 9:50:07 AM] - NO XREFS -