



Evans, Mechwart, Hambleton & Tilton, Inc.
 Engineers • Surveyors • Planners • Scientists
 5500 New Albany Road, Columbus, OH 43054
 Phone: 614.775.4500 Fax: 614.775.4800

SURVEY OF ACREAGE TRACT
LOT 24, QUARTER TOWNSHIP 4, TOWNSHIP 2, RANGE 16
UNITED STATES MILITARY LANDS
VILLAGE OF NEW ALBANY, COUNTY OF FRANKLIN, STATE OF OHIO

Date: December 8, 2008

Scale: 1" = 200'

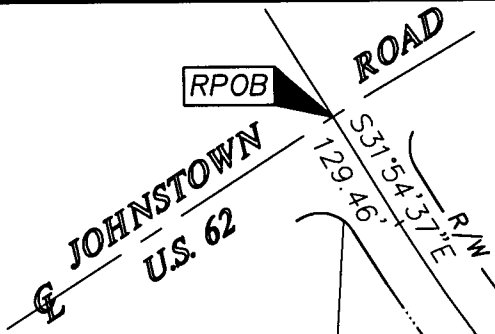
Job No: 2008-2213

RECEIVED

DEC 10 2008

Franklin County Engineer
 Dean C. Ringle, P.E., P.S.

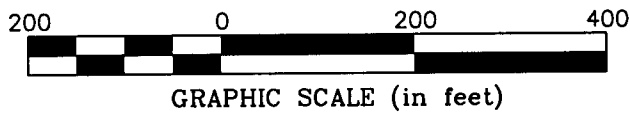
- | | |
|---|---|
| ① $\Delta = 12^{\circ}05'23''$
R = 1355.00'
ChB = S24°25'30"E
ChD = 285.38'
L = 285.91' | ④ $\Delta = 92^{\circ}10'45''$
R = 50.00'
ChB = N06°02'48"E
ChD = 72.04'
L = 80.44' |
| ② $\Delta = 06^{\circ}48'26''$
R = 1011.92'
ChB = S21°47'02"E
ChD = 120.15'
L = 120.23' | ⑤ $\Delta = 35^{\circ}36'20''$
R = 50.00'
ChB = N22°14'24"W
ChD = 30.57'
L = 31.07' |
| ③ $\Delta = 04^{\circ}11'35''$
R = 1330.00'
ChB = N01°58'09"E
ChD = 97.31'
L = 97.33' | ⑥ $\Delta = 05^{\circ}28'03''$
R = 1330.00'
ChB = N07°10'15"W
ChD = 126.87'
L = 126.92' |
| | ⑦ S31°56'01"E
48.00' |
| | ⑧ N58°03'59"E
136.54' |



$\Delta = 30^{\circ}05'02''$
R = 1534.00'
ChB = S46°57'09"E
ChD = 796.23'
L = 805.45'

● = I.P. FND.
○ = I.P. SET

I.P. Set are 13/16" I.D. iron pipe with cap inscribed EMHT INC



BASIS OF BEARINGS:
 Bearings are based on the Ohio State Plane Coordinate System as per NAD83, South Zone (1986 Adjustment). Control for bearings was from the centerline of Forest Drive, being South 18° 02' 08" East, of record in Plat Book 103, Page 81-82, Recorder's Office, Franklin County, Ohio.

① THE NEW ALBANY COMPANY, LLC
 26.152 AC.
 I.N. 199810150263210

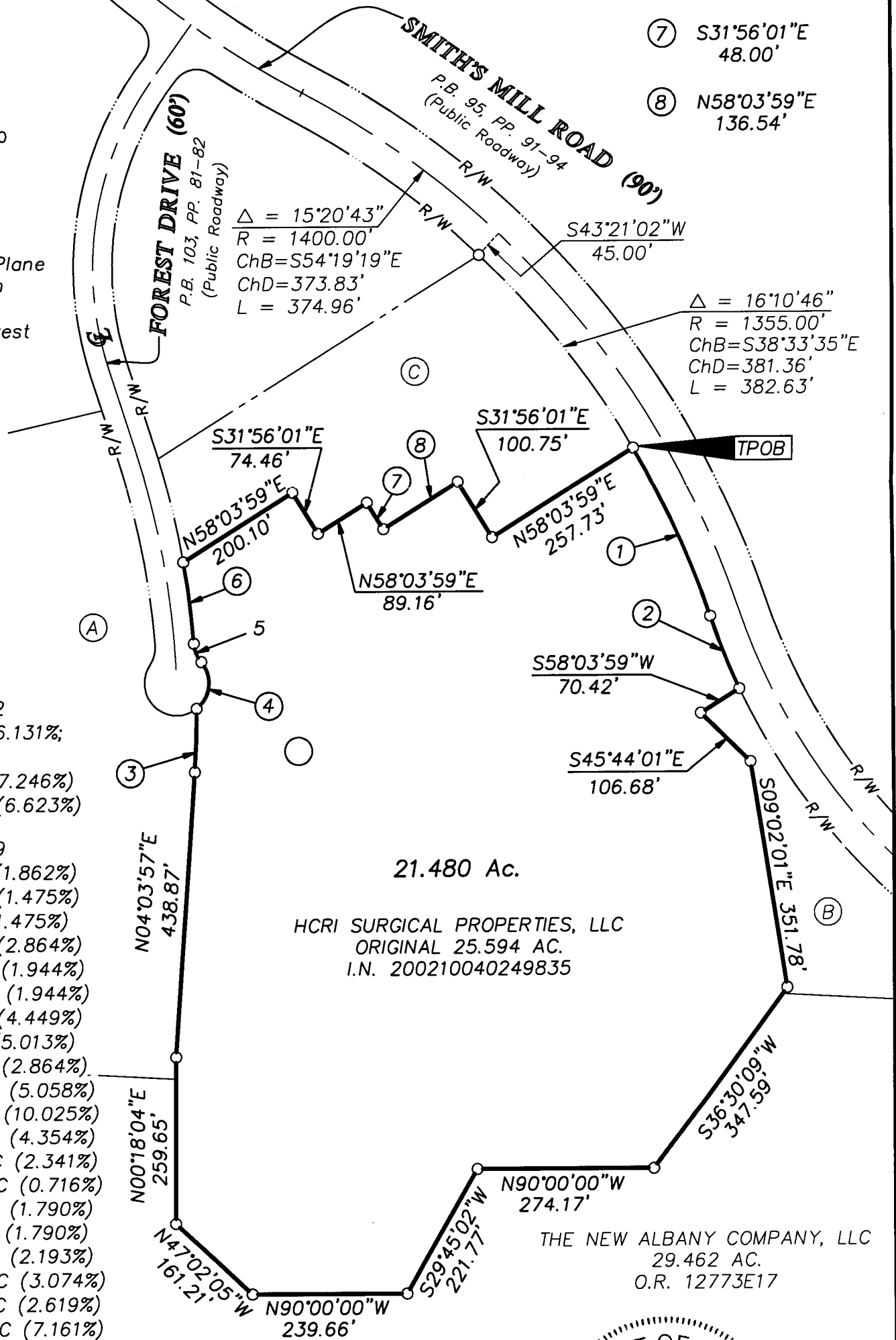
② THE NEW ALBANY COMPANY, LLC
 I.N. 199903020052207

③ 4.087 AC.

Instrument Number 200710250185822
 7277 NA GROUP I, LLC (ORIGINAL: 86.131%;
 REMAINDER: 7.515%)
 7277 NA PRIVATE INVESTOR II, LLC (7.246%)
 7277 NA PRIVATE INVESTOR XI, LLC (6.623%)

Instrument Number 200712200217239
 7277 NA PRIVATE INVESTOR III, LLC (1.862%)
 7277 NA PRIVATE INVESTOR IV, LLC (1.475%)
 7277 NA PRIVATE INVESTOR V, LLC (1.475%)
 7277 NA PRIVATE INVESTOR VI, LLC (2.864%)
 7277 NA PRIVATE INVESTOR VII, LLC (1.944%)
 7277 NA PRIVATE INVESTOR VIII, LLC (1.944%)
 7277 NA PRIVATE INVESTOR IX, LLC (4.449%)
 7277 NA PRIVATE INVESTOR X, LLC (5.013%)
 7277 NA PRIVATE INVESTOR XII, LLC (2.864%)
 7277 NA PRIVATE INVESTOR XIV, LLC (5.058%)
 7277 NA PRIVATE INVESTOR XV, LLC (10.025%)
 7277 NA PRIVATE INVESTOR XVI, LLC (4.354%)
 7277 NA PRIVATE INVESTOR XVII, LLC (2.341%)
 7277 NA PRIVATE INVESTOR XVIII, LLC (0.716%)
 7277 NA PRIVATE INVESTOR XIX, LLC (1.790%)
 7277 NA PRIVATE INVESTOR XX, LLC (1.790%)
 7277 NA PRIVATE INVESTOR XXI, LLC (2.193%)
 7277 NA PRIVATE INVESTOR XXIII, LLC (3.074%)
 7277 NA PRIVATE INVESTOR XXV, LLC (2.619%)
 7277 NA PRIVATE INVESTOR XXVI, LLC (7.161%)
 7277 NA PRIVATE INVESTOR XXVII, LLC (2.864%)
 7277 NA PRIVATE INVESTOR XXXI, LLC (0.358%)

Instrument Number 200801080003633
 7277 NA PRIVATE INVESTOR XXII, LLC (2.864%)
 7277 NA PRIVATE INVESTOR XXIV, LLC (2.864%)
 7277 NA PRIVATE INVESTOR XXVIII, LLC (0.358%)
 7277 NA PRIVATE INVESTOR XXX, LLC (10.025%)



21.480 Ac.

HCRI SURGICAL PROPERTIES, LLC
 ORIGINAL 25.594 AC.
 I.N. 200210040249835

THE NEW ALBANY COMPANY, LLC
 29.462 AC.
 O.R. 12773E17

By *Heather L. King*
 STATE OF OHIO
 HEATHER L. KING
 S-8307
 REGISTERED PROFESSIONAL SURVEYOR
 12/9/08

\\CMHDATA01\SURVEY\PROJECT\20082213\DWG\82213BV.DWG<11X17 PORTRAIT CANNON> - NO XREFS - LAST SAVED BY H KING [12/9/2008 9:38:49 AM] - PLOTTED BY H KING [12/9/2008 9:38:50 AM]