

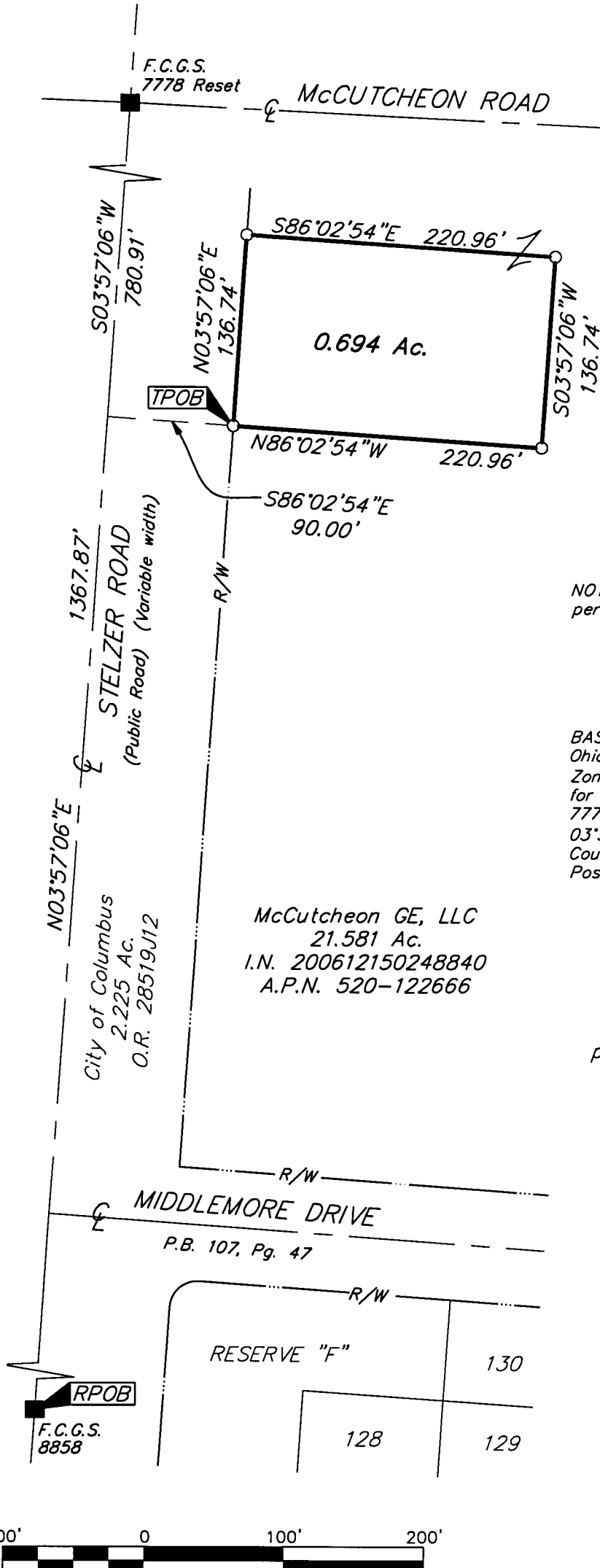
SURVEY OF ACREAGE PARCEL QUARTER TOWNSHIP 1, TOWNSHIP 1, RANGE 17 UNITED STATES MILITARY LANDS CITY OF COLUMBUS, FRANKLIN COUNTY, OHIO

Date: November 6, 2008

Job No. 2006-1356

Scale: 1" = 100'

M C M X X V I



NOTE: Survey is based on a field survey performed by EMHT in June 2000.

BASIS OF BEARINGS: Bearings are based on the Ohio State Plane Coordinate System, South Zone, as per NAD83 (1986 adjustment). Control for bearing was from coordinates of monuments 7778 Reset & 8858, having a bearing of South 03°57'06" West, established by the Franklin County Engineering Department, using Global Positioning System procedures and equipment.

McCutcheon GE, LLC
 21.581 Ac.
 I.N. 200612150248840
 A.P.N. 520-122666

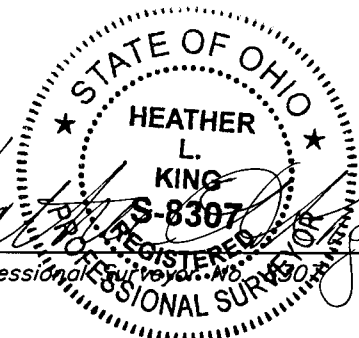
- = MON. FND.
- = I.P. SET

I.P. Set are 13/16" I.D. iron pipe with cap inscribed EMHT INC

RECEIVED

NOV 18 2008

Franklin County Engineer
 Dean C. Rindle, PE., PS.



By *[Signature]*
 Professional Surveyor No. 8307



GRAPHIC SCALE
 (IN FEET)

I:\CMHDATA\01\SURVEY\PROJECT\20061356\DWG\61356Bbv1.DWG-LEGAL PORTRAITS> - NO XREFS - LAST SAVED BY TWEBB [11/6/2008 1:33:51 PM] - PLOTTED BY TWEBB [11/6/2008 1:33:51 PM]