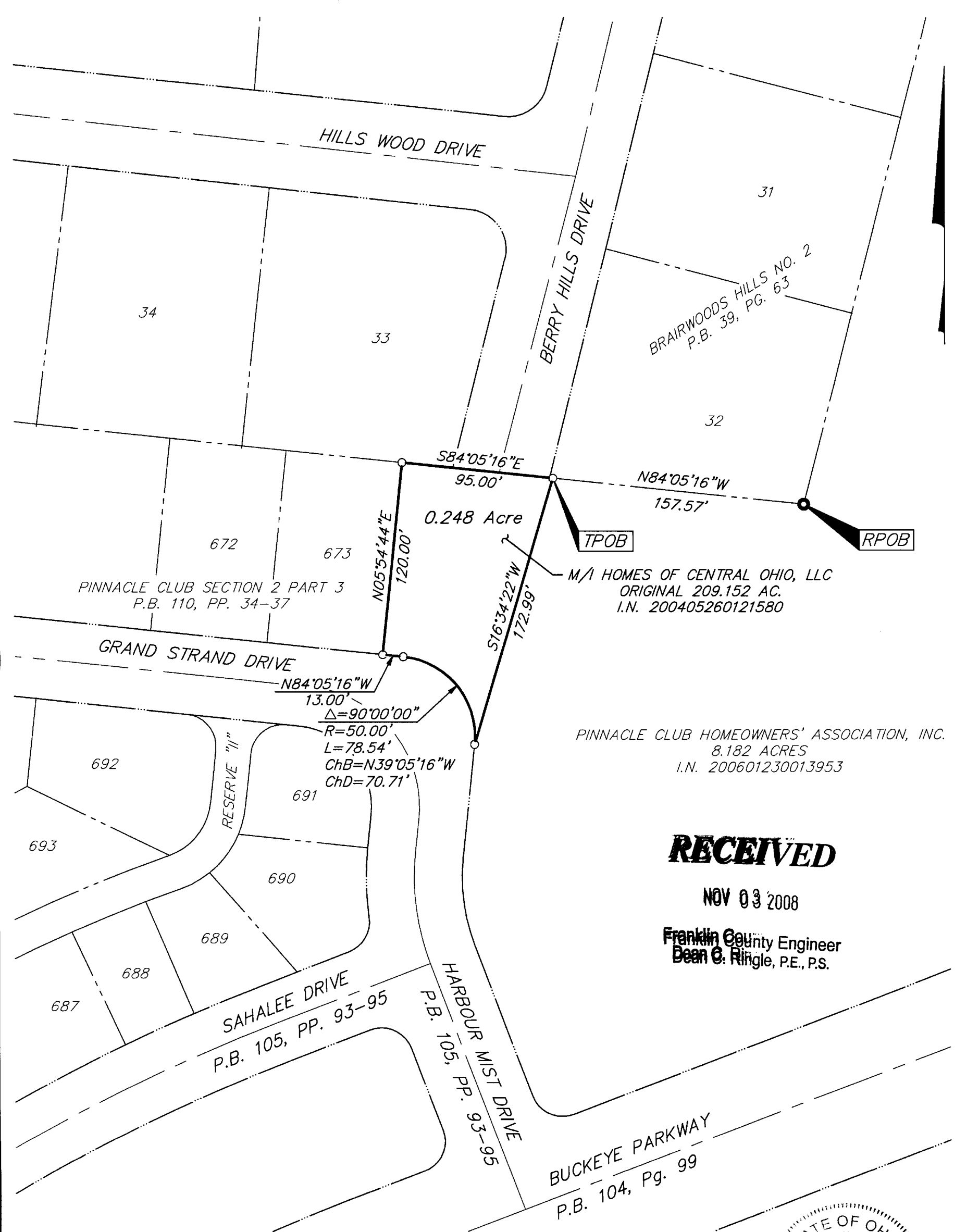


**EMH&T**  
 Evans, Mechwart, Hambleton & Tilton, Inc.  
 Engineers • Surveyors • Planners • Scientists  
 5500 New Albany Road, Columbus, OH 43054  
 Phone: 614.775.4500 Fax: 614.775.4800  
 M C M X X V I

**SURVEY OF ACREAGE PARCEL**  
**SURVEY NUMBER 6840**  
**VIRGINIA MILITARY DISTRICT**  
**CITY OF GROVE CITY, FRANKLIN COUNTY, OHIO**

Date: October 24, 2008  
 Scale: 1" = 60'  
 Job No: 2006-1429

\\CMHDATA01\SURVEY\PROJECT\20061429\DWG\61429B\DWG\1117.PORTRAIT.CANNON - NO XREFS - LAST SAVED BY JMASTON [10/24/2008 12:41:59 PM] - PLOTTED BY JMASTON [10/24/2008 12:41:59 PM]



**RECEIVED**

NOV 03 2008

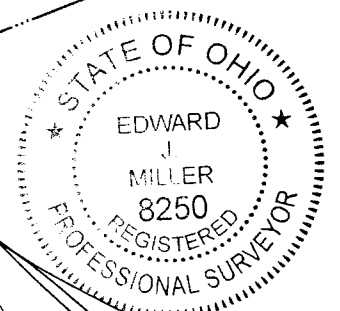
Franklin County Engineer  
 Dean C. Ringle, P.E., P.S.

**BASIS OF BEARINGS:** Bearings are based on the Ohio State Plane Coordinate System—South Zone per NAD83 (1986 adjustment). Control for bearings was from coordinates of monuments FRANK 25 & FRANK 125, having a bearing of South 92° 14' 00" East, established by the Franklin County Engineering Department.



GRAPHIC SCALE (IN FEET)

● = STONE FND.  
 ○ = I.P. SET  
 I.P. Set are 13/16" I.D. iron pipe with cap inscribed EMHT INC



By 10/29/08  
 Professional Surveyor No. 8250